

MAINTENANCE AND CONSTRUCTION DIVISION

Equipment
 Bryan Blood
 Fleet Manager
 Cell 979-4543

Shops
 Richfield #8742
 896-1341
 Price #8744
 636-1441
 Cedar #8746
 865-5541

Clayton Wilson
 District Engineer
 Cell 201-2215

Jim McConnell
 Program Engineer
 (C) Office 865-5505
 Cell 691-1869

Jennifer Orton
 Office Specialist I
 (C) Office 865-5525
 Cell 704-4094

Tim Walden
 Transportation PM
 Cell 801-573-1080

Scott Goodwin
 Area Engineer
 Office 893-4734
 Cell 896-0728

Ray Bentley
 Resident Engineer
 (S) Office 627-8643
 Cell 691-1887

Lief Condie
 Resident Engineer
 (C) Office 865-5556
 Cell 691-1879

Mike Seng
 Consultant Project Eng
 Office 896-1359
 Cell 979-4539

Ryan Orton
 Area Supervisor
 Office 865-5507
 (C) Cell 590-0265

Brandon McKinlay
 Area Supervisor
 Cell 691-5450

Ree Schena
 Area Supervisor
 (Delta) Office 864-2183
 Cell 559-5612

Riley Champneys
 Field Engineer
 (S) Cell 680-6707

John Fraidenburg
 Field Engineer
 (S) Office 986-3812
 Cell 801-808-6156

Tyrell Wood
 Field Engineer
 (C) Office 865-5525
 Cell 590-9690

Buildings/Grounds
Lake Powell Ferry

Kalvin Baker
 Facilities Coordinator II
 Cell 979-4563

Ozzie Trujillo
 Facilities Coordinator II
 (P) Cell 650-3959

Junction # 4468
 691-1894
 Panguitch # 4469
 676-3095
 Escalante # 4470
 616-4234
 Parowan # 4478
 592-3720
 Beaver # 4479
 421-1104

Long Valley # 4471
 691-2881
 Kanab # 4472
 691-3828
 Purgatory # 4473
 619-0987
 Beryl # 4475
 231-2878
 Cedar City # 4476
 590-0255
 Cedar Mtn # 4477
 691-5450

Chip Seal

Milford # 4480
 559-5613
 Cove Fort # 4481
 310-0400
 Meadow # 4482
 691-1821
 Delta # 4483
 979-6355
 Scipio # 4484
 406-1084

4766
 St. George
 Crew
 627-2649

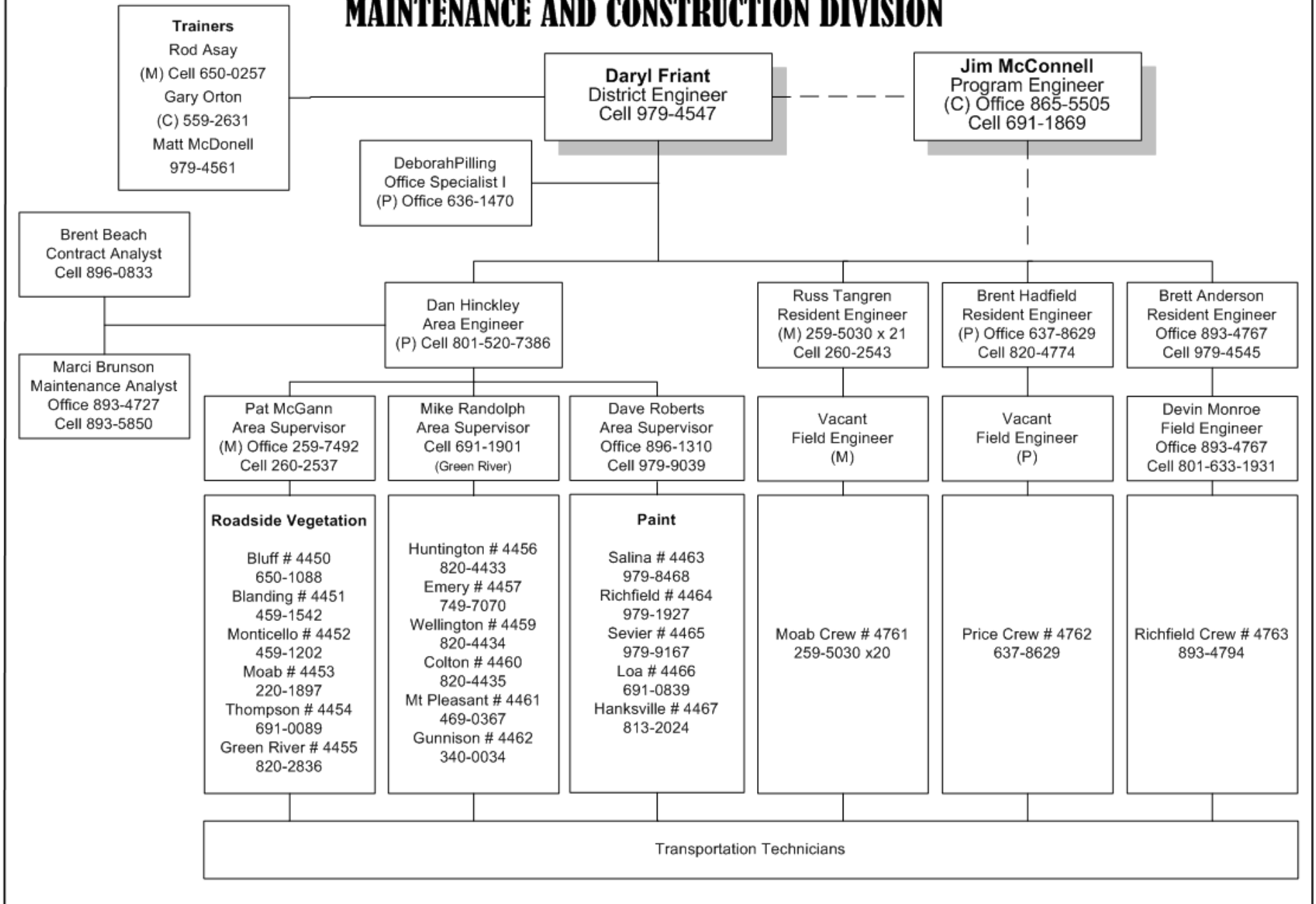
4764
 Dixie Team
 Crew
 627-2649

4765
 Cedar City
 Crew
 865-5558

#4768
 Consultant Project
 Crew

Transportation Technicians

MAINTENANCE AND CONSTRUCTION DIVISION



Bryan Blood
 Fleet Manager
 Cell 979-4543

8746 – Cedar Shop
 865-5541

8744 – Price Shop
 636-1441

8742 – Richfield
 896-1341

Rick Sparkman
 Shop Supervisor
 Cell 590-0305

Craig Guymon
 Shop Supervisor
 Cell 650-2810

Lyle Banks
 Shop Supervisor
 Cell 979-6057

Jason Spencer
 Lead Auto Worker
 Cell 531-6137

Chris Carter
 Lead Auto Worker
 Cell 749-1713

David Cunliffe
 Lead Auto Worker
 Cell 864-8625

Adam Pace
 Journey Welder

Torrey Harvey
 Journey Auto Worker
 Cell 609-9792

Kim Anderson
 Journey Auto Worker

Ron Grundy
 Journey Auto Worker
 Cell 590-1286

Max Halls
 Journey Auto Worker
 Monticello 201-1813

Rickie Bradshaw
 Journey Auto Worker

Michael Prettyman
 Journey Auto Worker
 Cell 201-3053

Kory Nelson
 Journey Auto Worker

Grant Bastian
 Service Station Opr
 Cell 979-0278

Joel Sanderson
 Journey Auto Worker
 Cell 691-4821

Bruce Hansen
 Journey Auto Worker

Ryan Harris
 Journey Auto Worker

Lance Brinkerhoff
 Journey Auto Worker
 Long Valley 633-5435

Dave Farnsworth
 Journey Auto Worker
 Green River 820-2679

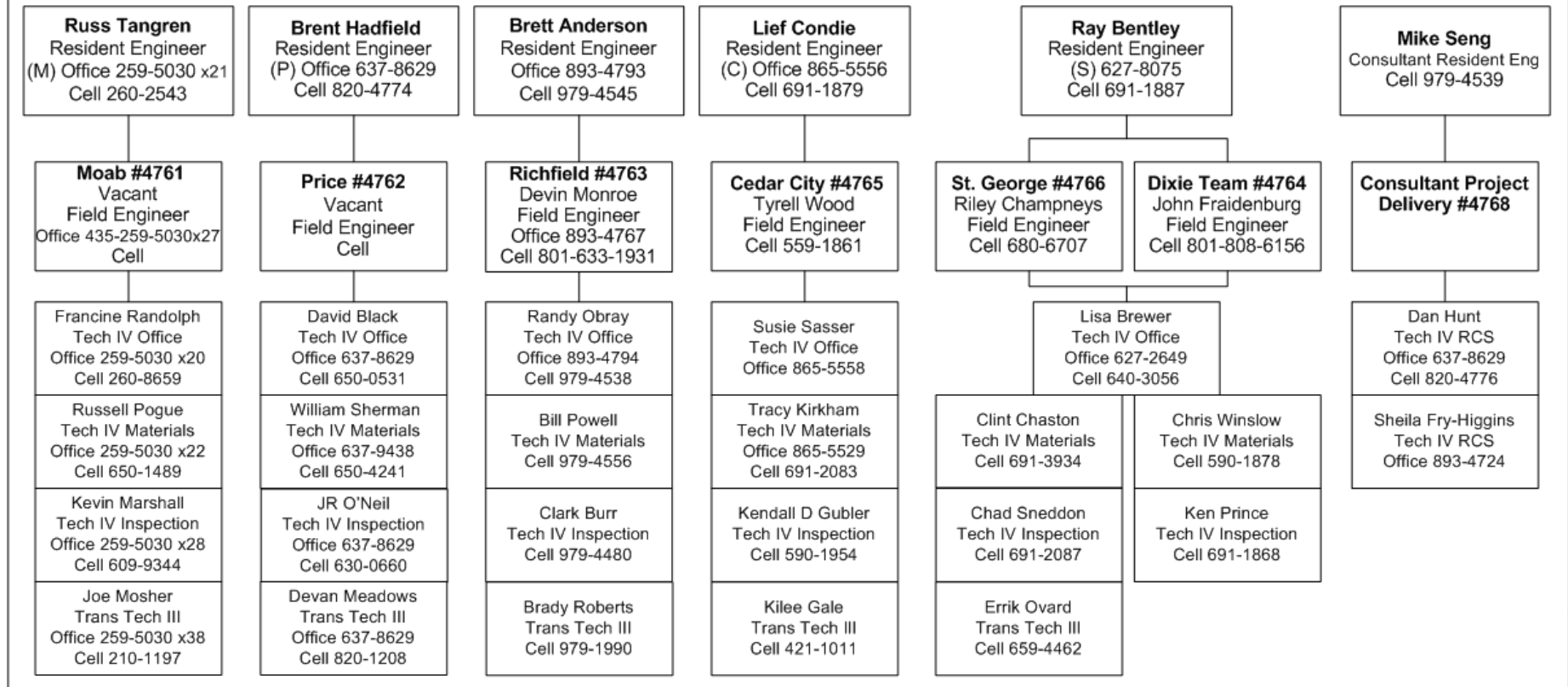
Cameron Cowley
 Journey Auto Worker

John Rowley
 Journey Auto Worker
 Meadow 253-0122

Repair Shops and Fleet Management:

Region Four has three repair shops located in Cedar City, Richfield and Price. They have 23 mechanics, 4 of those residing in outlying areas to better serve the needs of the Region. Almost every maintenance station in Region Four is less than one hour away from services of a needed mechanic. The goal of the repair shops is to provide great customer service combined with an efficient and effective repair to all equipment. Fleet Management is responsible for timely replacement of all vehicles and equipment within an assigned budget. Information from equipment utilization, inspections and inventory provides critical information to make proper management decisions. The Region Four Fleet Management program is responsible for over 1,550 pieces of UDOT and Fleet Services equipment which accounts for over 40% of the statewide UDOT fleet.

CONSTRUCTION DIVISION



Maintenance and Construction:

The Construction and Maintenance Division is lead by two Region District Engineers. They have 275 employees and are responsible for all construction activities and resources. They are responsible for project sequencing, resource allocation, process review and oversight. They are the federal steward for all projects and obligated to assure compliance with regulations for all construction projects.

The District Engineers have 38 maintenance crews and are responsible for all maintenance activities including snow plans, feature inventories, condition targets, and roadway activities required to maintain state routes. They are responsible to balance transportation technician resources between construction and maintenance activities. They utilize two Area Engineers, six Construction Engineers, six Area Supervisors, six Field Engineers and their associated staff to accomplish the variety of roadway maintenance and construction activities.

Pat McGann
 Area Supervisor
 (M) Office 259-5030 x24
 Cell 260-2537

4450 - Bluff
 Station 672-2213

4451 - Blanding
 Station 678-2680

4452 - Monticello
 Station 587-2620

4453 - Moab
 Station 259-5030 x25

4454 - Thompson
 Station 285-2220

4455 - Green River
 Station 564-3316

Freeman Sam
 Station Supervisor
 Cell 485-0570

Gary Black
 Station Supervisor
 Cell 459-1542

Chet Johnson
 Station Supervisor
 Cell 459-1202

Milo Randall
 Station Supervisor
 Cell 220-1897

Von Bowerman
 Station Supervisor
 Cell 691-0089

Ty Mecham
 Station Supervisor
 Cell 820-2836

Fred Talker
 Transportation Tech III
 Cell 225-6640

Forest Crofts
 Transportation Tech III
 Cell 459-1233

Ruel Todd Randall
 Roadway Ops Coord
 Cell 459-1977

Ken Ballantyne
 Transportation Tech III
 Cell 260-1896

Steven Taylor
 Transportation Tech III
 220-1121

Juan Lovato
 Transportation Tech III
 Cell 650-6903

Donald Kay
 Transportation Tech II

Cletis Hatch
 Transportation Tech II

Karl Schmidt
 Transportation Tech III
 Cell 459-9980

Jason Standage
 Transportation Tech III

Blaine Allen
 Transportation Tech II

Ben Farnsworth
 Transportation Tech III
 Cell 820-4197

Matt Tortalita
 Transportation Tech I

Vance Adams
 Transportation Tech II

Nathan Freestone
 Transportation Tech II

Eric Betts
 Transportation Tech II

Bob Holloway
 Transportation Tech II

Josh Wilmarth
 Transportation Tech II

John Martinez
 Transportation Tech I

Paul Marian
 Transportation Tech II

Jonathan Nielson
 Transportation Tech II

Justin Woodard
 Transportation Tech II

Adam Gardner
 Transportation Tech I

Mike Ryan
 Transportation Tech II

James Hunt
 Transportation Tech I

John Lyman
 Transportation Tech II

Billy Maloy
 Transportation Tech II

Rob Garcia
 Transportation Tech II

Josh Jarvis
 Transportation Tech I

Curtis Wareham
 Transportation Tech I

Chance Shumway
 Transportation Tech I

Kevin Dull
 Transportation Tech I

Mike Randolph
 Area Supervisor
 Office 285-2220
 (Green River) Cell 691-1901

4456 – Huntington
 Station 687-9969

4457 - Emery
 Station 286-2276

4459 – Wellington
 Station 637-3294

4460 – Colton
 Station 870-8772

4461 - Mt. Pleasant
 Station 462-2272

4462 – Gunnison
 Station 528-7886

Mike Stuart
 Station Supervisor
 Cell 820-4433

Mike Christensen
 Station Supervisor
 Cell 749-7070

Dan Allred
 Station Supervisor
 Cell 820-4434

Brian Nielsen
 Station Supervisor
 Cell 820-4435

Scott Justesen
 Station Supervisor
 Cell 469-1222

Preston Pritchard
 Station Supervisor
 Cell 340-0034

Vaughn Guymon
 Transportation Tech III
 Cell 650-9655

Jeremy Larsen
 Transportation Tech III
 Cell 749-0725

Tim Turner
 Roadway Ops Coord
 Cell 801-556-1392

Randy Dolinski
 Transportation Tech III
 Cell 820-4775

Chad Beck
 Transportation Tech II

Brian Sorensen
 Transportation Tech III
 Cell 979-1348

Wess Walls
 Transportation Tech III
 Cell 650-0796

David McKee
 Transportation Tech II

Tab Davis
 Transportation Tech II

Kirk Sherman
 Transportation Tech III
 Cell 650-7451

Riley Shelley
 Transportation Tech II

Marc Lambert
 Transportation Tech I

Calvin Willson
 Transportation Tech II

Tate Weber
 Transportation Tech II

Davie Baird
 Transportation Tech II

Danny Brotherson
 Transportation Tech II

Chris Long
 Transportation Tech II

Jesse Bell
 Transportation Tech I

Jacob Ibanez
 Transportation Tech II

McCoy Hurst
 Transportation Tech I

Layne Matkin
 Transportation Tech II

Tony Cook
 Transportation Tech II

Thomas Davis
 Transportation Tech II

Brandon Otten
 Transportation Tech I

Jerry Clark
 Transportation Tech I

Lynn Mortensen
 Transportation Tech I

DuWayne McCormick
 Transportation Tech I

Richard Ghrist
 Transportation Tech II

Jess Bailey
 Transportation Tech I

Colton Oneil
 Transportation Tech I

Eric Stillson
 Transportation Tech I

Brandon Hansen
 Transportation Tech I

Dave Roberts
Area Supervisor
Office 896-1310
Cell 979-9039

4463 - Salina
Station 529-7222

Robert Young
Station Supervisor
Cell 201-4899

Morgan Shaw
Transportation Tech II

Colton Peterson
Transportation Tech II

Billy Tanner
Transportation Tech I

Andrew Burd
Transportation Tech I

Chavis Jensen
Transportation Tech I

4464 - Richfield
Station 896-1719

Lance Mooney
Station Supervisor
Cell 979-1927

David Bybee
Transportation Tech III

Kade Murdock
Transportation Tech II

Josh Utley
Transportation Tech II

Weston Southwick
Transportation Tech II

Timothy Watts
Transportation Tech I

4465 - Sevier

Waco Lund
Station Supervisor
Cell 979-9167

Cullen Balch
Transportation Tech III
Cell 201-1061

Rick Byers
Transportation Tech II

Keldon Johnson
Transportation Tech I

4466 - Loa
Station 836-2631

Marc Wood
Station Supervisor
Cell 691-0839

Wesley Erickson
Transportation Tech III
Cell 691-2028

Kerry Johnson
Transportation Tech II

Shawn Davis
Transportation Tech II

Mel Batty
Transportation Tech II

Jake Jones
Transportation Tech II

4467 - Hanksville
Station 542-3486

Stan Roberts
Station Supervisor
Cell 813-2024

Dale Sellers
Transportation Tech III
Cell 253-2347

Brandon Whipple
Transportation Tech II

Fred Weihing
Transportation Tech II

Russell Wells
Transportation Tech II

4485 - Paint Crew
Richfield 896-1343

Kelly Olson
Station Supervisor
Cell 979-4562

George Jay Simon
Transportation Tech III
Cell 979-1486

Bryan Morgan
Transportation Tech II

JD Wright
Transportation Tech II

Colton Curtis
Transportation Tech II

4486 - Paint Crew
Price 636-1443

Leonard Heaps
Station Supervisor
Cell 820-4443

Pete Johansen
Transportation Tech III
Cell 749-2546

Steve Feuers
Transportation Tech II

Darren Mortenson
Transportation Tech II

Max Conder
Transportation Tech I

4487 - Paint Crew
Cedar 586-0284

John Evans
Station Supervisor
Cell 559-0533

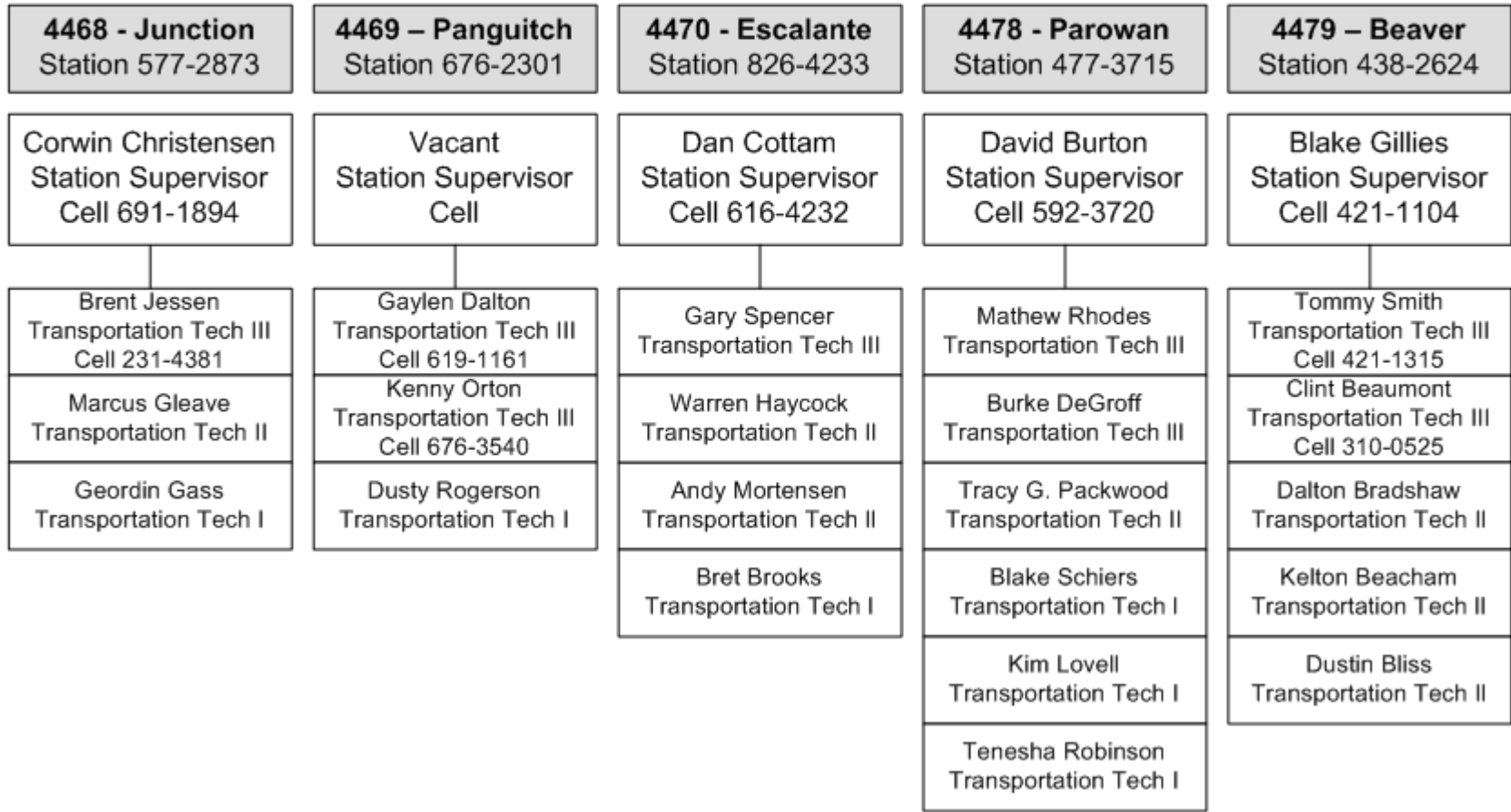
Jason Holmes
Transportation Tech I

Mark Lister
Transportation Tech I

Clayton Cluff
Transportation Tech I

Nathan Stones
Transportation Tech I

Ryan Orton
 Area Supervisor
 (C) Cell 590-0265



Brandon McKinlay
 Area Supervisor
 (C) Cell 691-5450

4471 - Long Valley
 Station 648-2398

Andy Crofts
 Station Supervisor
 Cell 691-2881

Alex Lamb
 Transportation Tech III
 Cell 899-1606

Jason Sorensen
 Transportation Tech III

Sean Frost
 Transportation Tech II

Robert Brown
 Transportation Tech II

Gary Tait
 Transportation Tech I

4472 - Kanab
 Station 644-2476

Shayne Ramsay
 Station Supervisor
 Cell 691-3828

Kerry Glover
 Transportation Tech III
 Cell 691-2173

James Delynn Crofts
 Transportation Tech III
 691-3851

Coby Glover
 Transportation Tech I

4473 - Purgatory
 Station 627-8643

Todd Abbott
 Station Supervisor
 Cell 619-0987

Ryan Christison
 Roadway Ops Coord

Josh Brooks
 Transportation Tech III
 Cell 668-7007

Josh Macfarlane
 Transportation Tech III
 Cell 691-1884

Justin Cannon
 Transportation Tech II

Richard Jensen
 Transportation Tech II

Devin Norton
 Transportation Tech I

Jimmy Low
 Transportation Tech I

4475 - Beryl
 Station 439-5560

Curt Flanigan
 Station Supervisor
 Cell 231-2878

Justin Hulet
 Transportation Tech III
 Cell 691-0796

Colby Hunt
 Transportation Tech II

Kyle Christensen
 Transportation Tech II

4476 - Cedar City
 Station 586-2103

Erick Cox
 Station Supervisor
 Cell 691-2082

Jake Adams
 Transportation Tech III

Randy Sparkman
 Transportation Tech III

Keith Savage
 Transportation Tech II

Jake Urie
 Transportation Tech II

Oscar Colon
 Transportation Tech II

Adam King
 Transportation Tech II

Shae Reber
 Transportation Tech II

4477 - Cedar Mtn
 Station 865-5540

Kevin Lambeth
 Station Supervisor
 Cell 691-5451

Brady Abbott
 Transportation Tech III

Mikel Jake
 Transportation Tech II

Steve Lambert
 Transportation Tech II

Chris Evans
 Transportation Tech I

Ree Schena
Area Supervisor
(Delta) Office 864-2183
Cell 559-5612

4480 – Milford
Station 387-5540

Travis Willden
Station Supervisor
Cell 463-2198

Travis Seifers
Transportation Tech III
Cell 691-8728

Monty Griffiths
Transportation Tech II

Gabe Thompson
Transportation Tech I

4481 - Cove Fort
Station 438-5663

Zane Yardley
Station Supervisor
Cell 310-0400

Russell Bradshaw
Transportation Tech III
Cell 310-0798

Dustin Carter
Transportation Tech III

Neal Yardley
Transportation Tech II

Kyle Cox
Transportation Tech I

Logan Blackner
Transportation Tech I

4482 - Meadow
Station 842-7188

Gail Hare
Station Supervisor
Cell 691-1821

Tim Turner
Roadway Ops Coord
Cell 253-0933

Bryce Whitaker
Transportation Tech III
Cell 253-2663

Jason Stewart
Transportation Tech II

Jared Hare
Transportation Tech I

4483 - Delta
Station 864-2196

Keith Meinhardt
Station Supervisor
Cell 979-6355

Bill Dearden
Roadway Ops Coord
Garrison 559-5614

Kenneth J Hyde
Transportation Tech III
Cell 864-7200

John Christensen
Transportation Tech II

Lydell Lovell
Transportation Tech II

4484 – Scipio
Station 758-2453

Dale Robins
Station Supervisor
Cell 406-1084

Paul Johnson
Transportation Tech III
Cell 253-0007

Kasey Brunson
Transportation Tech III
Cell 979-4709

Sean Cain
Transportation Tech I

Mccrae Thatcher
Transportation Tech I