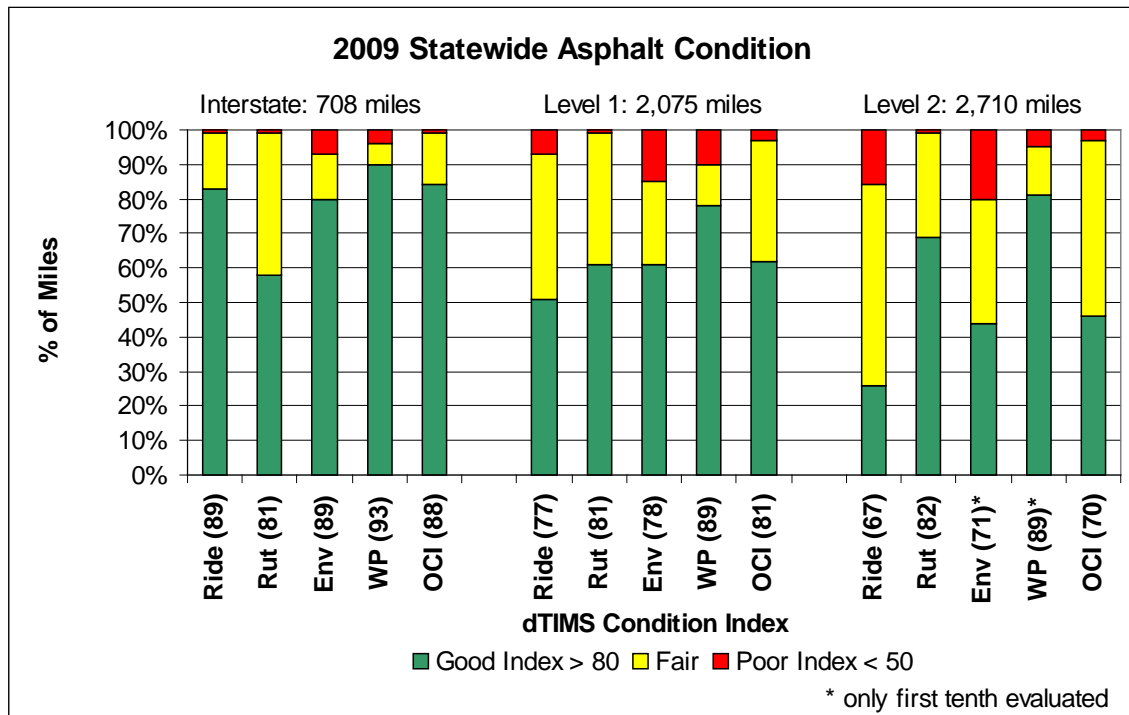


2009 Asphalt pavement condition using dTIMS Index values.<sup>1</sup>



% of miles based on 0.1 mile condition data.<sup>2</sup>

Ride: based on average of left & right wheel path IRI

Rut: based on higher of left or right wheel path rutting

Environmental Index: based on higher of Patching or Environmental cracking

Environmental Cracking based on Transverse, Longitudinal & Block cracking

Wheel Path Index: based on cracking in the wheel paths

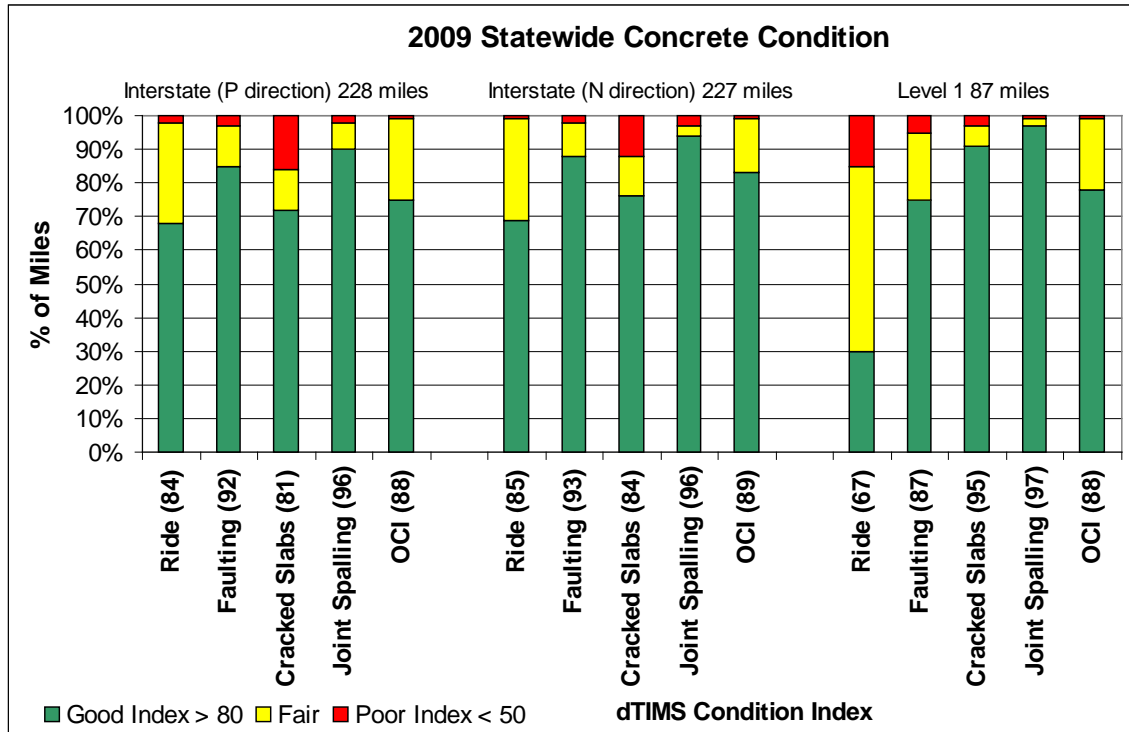
Overall Condition Index (OCI): based on average of other 4 Index values

See pavement management manual – Part 4 for Index formulas

<sup>1</sup> Reflects revised Index formulas for Environmental and Wheel Path cracking, added to the model in January 2010.

<sup>2</sup> dTIMS converts the .1 mile data used here into Section level Index values used in the model.

2009 Concrete pavement condition using dTIMS Index values



Ride: based on average of left & right wheel path IRI

Faulting: based on number and severity of joint faulting

Cracked Slabs: based on a combination of Shattered Slabs, Transverse cracked slabs, Longitudinally cracked slabs, and slabs with Corner Breaks

Joint Spalling: based on extent and severity of Joint Spalling and amount of Asphalt Patching

Overall Condition Index (OCI): based on average of other 4 Index values