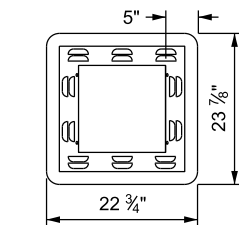
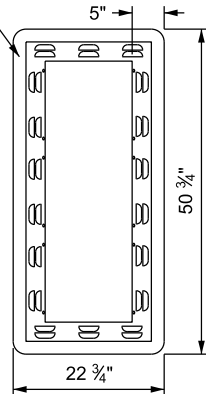


TYPE 0 TYPE I TYPE II TYPE III TYPE IV TYPE V TYPE VI TYPE VII HYBRID BEACON

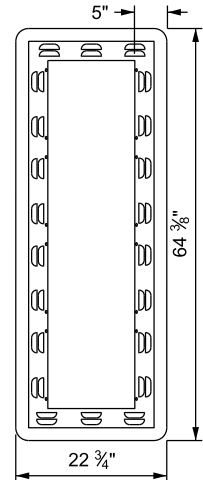
2" RETROREFLECTIVE
FLUORESCENT YELLOW TAPE (TYP)
(SEE NOTES 8 & 9)



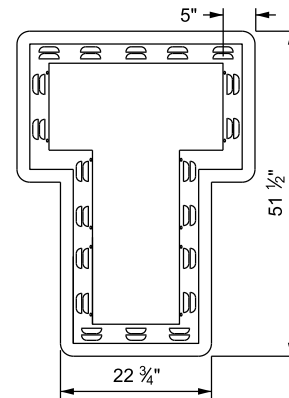
**BACKPLATE
FOR TYPE 0
SIGNAL HEAD**



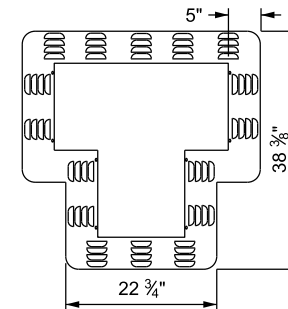
**BACKPLATE
FOR TYPE I, II, & III
SIGNAL HEAD**



**BACKPLATE
FOR TYPE IV, & VI
SIGNAL HEAD**



**BACKPLATE
FOR TYPE VII
SIGNAL HEAD**



**BACKPLATE
FOR HYBRID BEACON
SIGNAL HEAD**

LOUVERED BACKPLATE DETAILS

MAXIMUM MOUNTING HEIGHT OF SIGNAL FACES
BETWEEN 40 FT AND 49 FT FROM STOP LINE
(SEE NOTE 11)

HORIZONTAL DISTANCE FROM STOP LINE (FT)	HEIGHT TO TOP OF SIGNAL HOUSING ABOVE PAVEMENT (FT)
40	21
42	21.7
44	22.4
46	23.1
48	23.8
49	24.2

NOTES:

- USE 12 x 12 INCH BALLCAP/CUTAWAY VISORS FOR TRAFFIC SIGNALS. USE FULL VISORS WHEN THE INTERSECTION IS SKEWED.
- APPLY A BEAD OF SILICONE AROUND VISORS.
- ALL EXTERIOR AND INTERIOR OF THE SIGNAL HOUSING, DOOR, AND OUTSIDE OF VISOR TO BE HIGHWAY YELLOW. INSIDE OF VISOR IS PAINTED FLAT BLACK. BOTH SIDES OF BACK-PLATES PRIMED AND PAINTED FLAT BLACK.
- LOCATE TERMINAL BLOCK IN TOP SECTION FOR TYPE I, II, III, IV, AND VI SIGNAL HEADS. REFER TO STD DWG SL 2B FOR WIRE PATH AND TERMINAL BLOCK LOCATIONS FOR TYPE V, TYPE VII, AND HYBRID BEACON SIGNAL HEADS.
- INSTALL TYPE V, TYPE VII, AND HYBRID BEACON SIGNAL ASSEMBLIES SO THAT HINGED SIGNAL FACES SWING OPEN TO THE OUTSIDE.
- ORIENT ALL LED LENSES FOR TOP UPWARD ALIGNMENT UNLESS OTHERWISE SPECIFIED ON PLAN SHEETS.
- PROVIDE BACKPLATE FOR ALL TYPE 0, I, II, III, IV, VI, VII, HYBRID BEACON SIGNAL HEADS. PROVIDE BACKPLATE FOR TYPE V SIGNAL HEADS ONLY AS SPECIFIED.
- INSTALL 2 INCH RETROREFLECTIVE YELLOW TAPE-ASTM TYPE XI AROUND OUTSIDE EDGE OF BACKPLATES EXCEPT AS STATED IN NOTE 9.
- DO NOT APPLY RETROREFLECTIVE TAPE TO SIGNAL HEADS ON RAMP METERS, PEDESTRIAN HYBRID BEACONS, PEDESTRIAN FLASHING BEACONS, AWS, OR REDUCED SPEED SCHOOL ZONE ASSEMBLIES.
- RIVETED ASSEMBLY OF MULTI-PIECE BACKPLATES IS REQUIRED.
- OBTAIN APPROVAL FOR PLACEMENT OF SIGNAL FACES LESS THAN 50 FT FROM STOP LINE FROM THE ENGINEER.
- ALL SIGNAL HEAD FUNCTIONS TO BE CONTROLLED BY THE SIGNAL CONTROLLER IN THE SIGNAL CABINET.

SUPPLEMENTAL DRAWING

REVISIONS

NO.	DATE	APPR.	REMARKS
1	10/31/2013	LJM	ADD TYPE 0 & TYPE VII SIGNAL HEAD.
2	10/22/2015	JS	ADD TYPE 0 & TYPE VII BACKPLATE.
3	4/28/2016	JS	MODIFIED RETROREFLECTIVE TAPE SIZE AND NOTE 1. ADDED HYBRID BEACON. REVISED BACKPLATE GRAPHICS. REVISED NOTES. ADDED MOUNTING HEIGHT TABLE. MOVED SIGNAL POLE MOUNT DETAIL TO SL2A. TITLE CHANGED.

UTAH DEPARTMENT OF TRANSPORTATION
STANDARD DRAWINGS FOR ROAD AND BRIDGE CONSTRUCTION
SALT LAKE CITY, UTAH

RECOMMENDED FOR APPROVAL
[Signature]
CHAIRMAN STANDARDS COMMITTEE

APR. 28, 2016
DATE

APR. 28, 2016
DATE

DEPUTY DIRECTOR

TRAFFIC SIGNAL HEADS

STD. DWG. NO. **SL 6**

STANDARD DRAWING TITLE