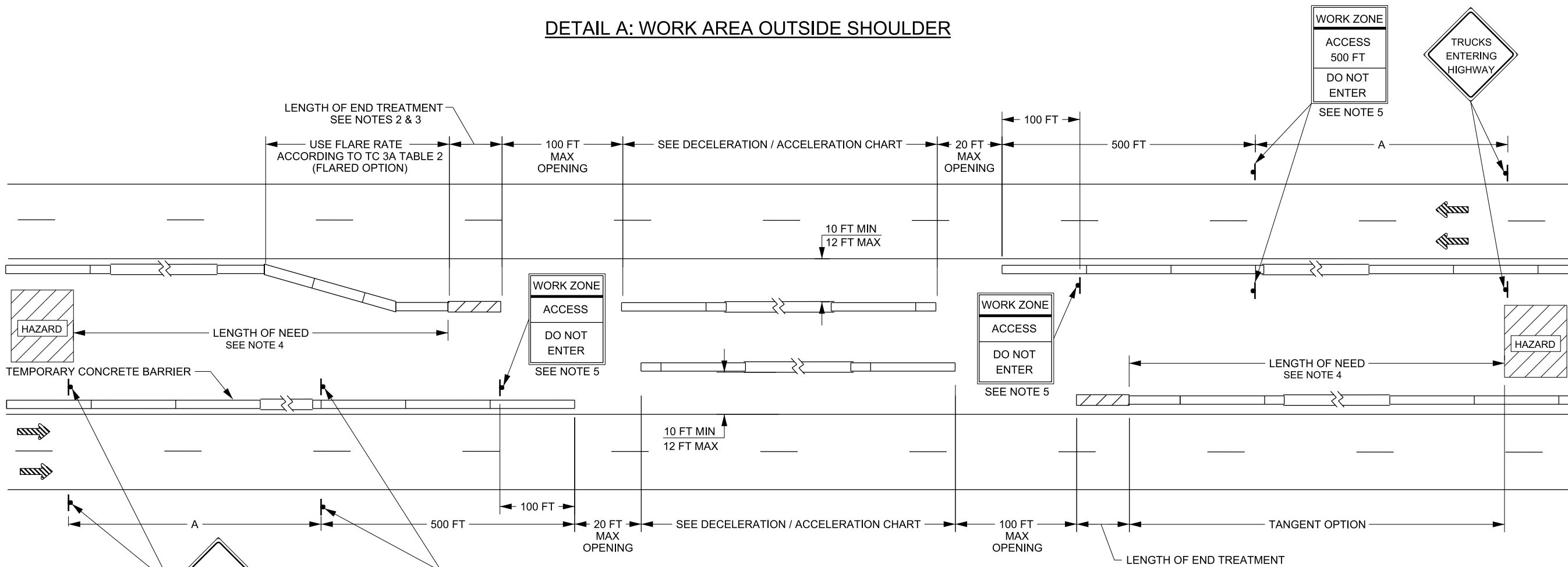


DETAIL A: WORK AREA OUTSIDE SHOULDER



DETAIL B: WORK AREA INSIDE SHOULDER

DECCELERATION / ACCELERATION CHART	
PRE-CONSTRUCTION POSTED SPEED LIMIT (MPH):	MINIMUM REQUIRED LENGTH:
55	500 FT
60	580 FT
65	660 FT
70	740 FT
75	820 FT
80	920 FT

NOTES:

1. SELECT THE CONSTRUCTION ACCESS POINT LOCATIONS WITH THE APPROVAL OF THE ENGINEER. SELECT LOCATIONS WITH GOOD SIGHT DISTANCE AND EASE OF ACCESS FOR ENTERING VEHICLES. AVOID LOCATIONS JUST BEYOND THE CREST OF VERTICAL CURVES, ON STRUCTURES, OR ASCENDING GRADES.
2. USE THE DEPARTMENT'S GUIDELINES FOR CRASH CUSHIONS & END TREATMENTS, CURRENT EDITION, FOR APPROVED CONSTRUCTION ZONE SYSTEMS.
3. PLACE THE CRASH CUSHION / END TREATMENT AND THE LAST BARRIER SECTION PARALLEL TO TRAFFIC.
4. USE PROPER LENGTH OF NEED FOR BOTH FLARED AND TANGENT TEMPORARY BARRIER OPTIONS ACCORDING TO THE REQUIREMENTS OF THE CURRENT EDITION OF THE ROADSIDE DESIGN GUIDE. USE THE PRE-CONSTRUCTION POSTED SPEED LIMIT PRIOR TO THE WORK ZONE FOR THE DESIGN OF THE REQUIRED LENGTH OF NEED.
5. SEE TC 4D SERIES STD DWGS FOR SIGN DESIGN AND LAYOUT.
6. USE THE IDENTICAL LEGEND SUPPLEMENTAL SIGNING FOR "TRUCKS ENTERING HIGHWAY" AND "WORK ZONE ACCESS 500 FT" SIGNS.
7. MAINTAIN MINIMUM 2 FT SHOULDER WIDTHS.

SUPPLEMENTAL DRAWING

NO.	DATE	APPR.	REMARKS
1	8/30/2012	SDD	NEW DRAWING.

UTAH DEPARTMENT OF TRANSPORTATION
 STANDARD DRAWINGS FOR ROAD AND BRIDGE CONSTRUCTION
 SALT LAKE CITY, UTAH

RECOMMENDED FOR APPROVAL
 CHAIRMAN STANDARDS COMMITTEE
 APPROVED

DATE: AUG.30.2012
 DATE: AUG.30.2012

DEPUTY DIRECTOR

CONSTRUCTION ACCESS POINTS FOR SPEEDS OF 55 MPH AND GREATER

STANDARD DRAWING TITLE

STD. DWG. NO. **TC 19**

12-SEP-2012 D:\N File\1\Standard.dwg\Drawings\Impervial\2012\Approved\Issues\Suppl\Approved\TC19.dwg