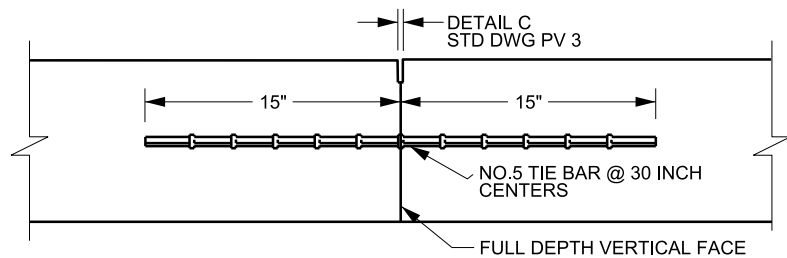


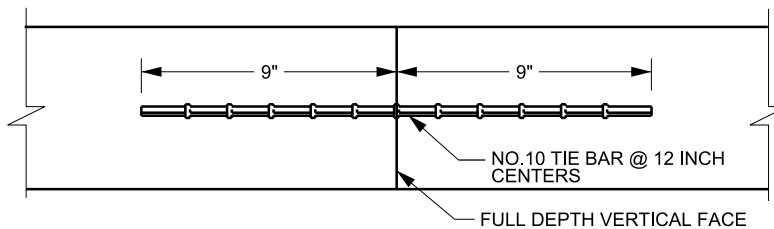
JOINT SECTION DETAILS



LONGITUDINAL CONTACT JOINT

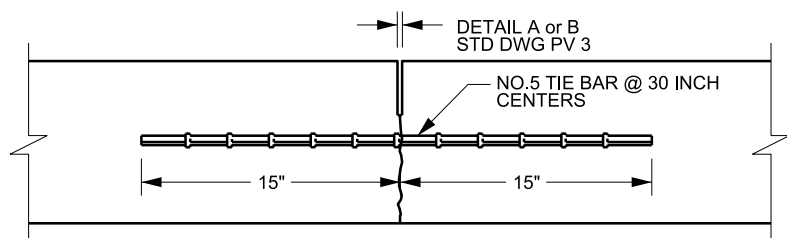
DETAIL "A"

NOTE: NO. 5 TIE BAR @ 15 INCH CENTERS IF DRILLED AND EPOXIED.



MID-PANEL CONTACT JOINT

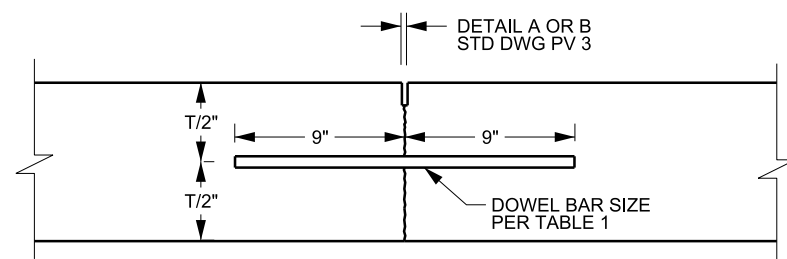
DETAIL "B"



SAWED LONGITUDINAL JOINT

DETAIL "C"

(T/3 SAW CUT W/ AGGREGATE INTERLOCK BELOW)

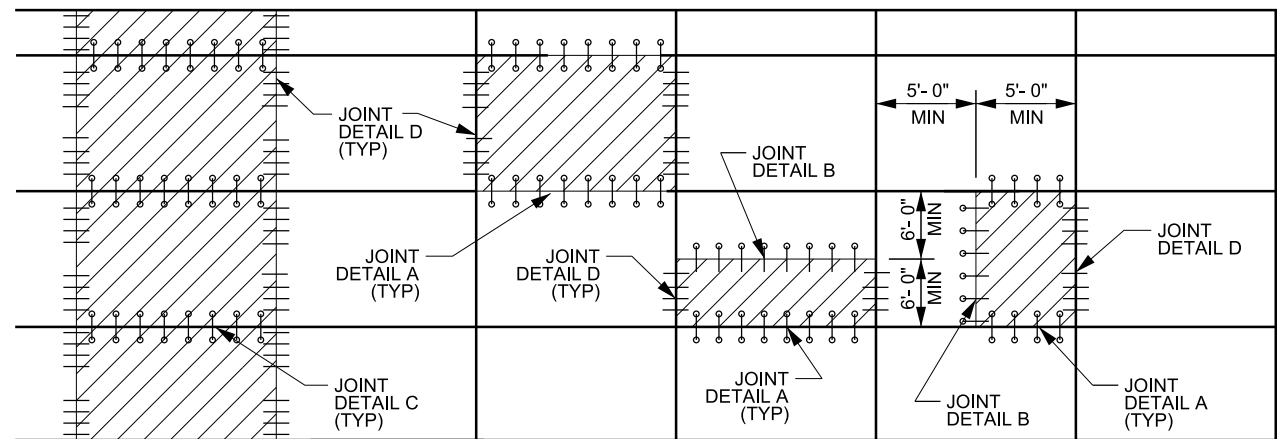


LOAD TRANSFER DOWEL BAR JOINT

DETAIL "D"

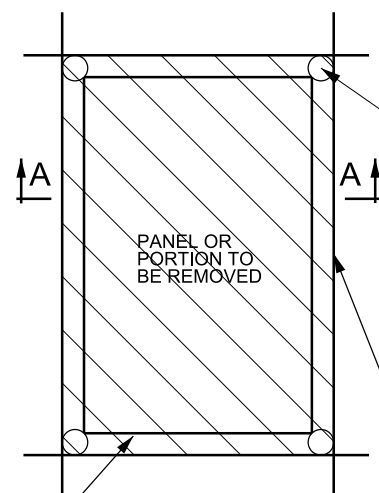
INSTALL DOWEL BARS PARALLEL TO THE CENTERLINE AND TO THE PAVEMENT SURFACE. LIMIT DEVIATIONS FROM PARALLEL TO ± ¼ INCH IN THE LENGTH OF THE DOWEL BAR.

PAVEMENT THICKNESS	DOWEL BAR DIAMETER
LESS THAN 9"	1"
≥ 9" AND < 11"	1.25"
11" OR GREATER	1.5"



- ○ TIE BARS - SEE DETAIL "A" OR "C"
- TIE BARS - SEE DETAIL "B"
- DOWEL BARS - SEE DETAIL "D" (4 DOWELS PER WHEEL PATH AT 12" SPACING)

TYPICAL PAVEMENT PANEL REPLACEMENT



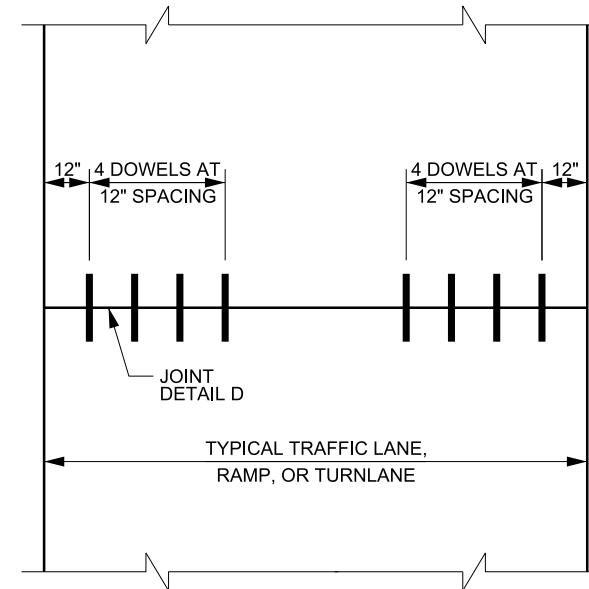
SECOND FULL DEPTH PERIMETER SAWCUT INSET 4" FROM EDGE CUTS. TAPER CUT TO THE INSIDE.

PANEL REMOVAL DETAIL



SECTION A-A

FULL DEPTH SAWCUT ON ALL EDGES OF REMOVAL AREA



LOAD TRANSFER DOWEL BAR LAYOUT FOR NEW PAVEMENT

NOTES:

1. COAT ALL BARS ACCORDING TO STANDARD SPECIFICATION 03211.
2. USE DEFORMED REINFORCING BAR FOR TIE BARS.
3. USE SMOOTH DOWEL BARS.
4. MAKE FULL DEPTH SAWCUT AROUND ALL EDGES OF PANELS OR PORTIONS REPLACED. MINIMIZE OVERCUT INTO ADJACENT PANELS.
5. REPLACE THE ENTIRE PANEL WHEN REPLACING A PARTIAL PANEL IF THE WIDTH OF REMAINING PORTION IS LESS THAN THE MINIMUM SHOWN.
6. DO NOT INSTALL DOWEL BARS IN THE SHOULDERS UNLESS DIRECTED TO DO SO BY THE PROJECT SPECIFIC SPECIAL PROVISION OR PLAN SHEET.
7. PARTIAL PANEL REPLACEMENTS APPLY ONLY TO THE REHABILITATION OF EXISTING PAVEMENTS AND NOT TO PROJECTS CONSTRUCTING NEW OR ORIGINAL PAVEMENT. REPAIRS TO PAVEMENT ON NEW PROJECTS REQUIRE FULL PANEL REPLACEMENT.
8. ELIMINATE TIE BARS THAT INTERFERE WITH "LOAD TRANSFER DOWEL BARS".

NO.	DATE	APPR.	REMARKS
1	10/25/2012	BL	REVISED DETAIL A TIE BARS AND LOAD TRANSFER DOWEL BAR LAYOUT DETAIL. CHANGED DRAWING TITLE.
2	04/30/2015	SA	MODIFIED NOTES 1, 2, AND 3. NOTE 7 ADDED. TABLE 1 UPDATED. NOTE 8 ADDED. UPDATED TYPICAL PAVEMENT PANEL REPLACEMENT DETAIL.

UTAH DEPARTMENT OF TRANSPORTATION
STANDARD DRAWINGS FOR ROAD AND BRIDGE CONSTRUCTION
SALT LAKE CITY, UTAH

RECOMMENDED FOR APPROVAL
Randy S. [Signature]
CHAIRMAN STANDARDS COMMITTEE
APR. 30, 2015
DATE

DEPUTY DIRECTOR
[Signature]
APR. 30, 2015
DATE

CONCRETE PAVEMENT
DETAILS 2 OF 2

STANDARD DRAWING TITLE

STD. DWG. NO.

PV 4

SUPPLEMENTAL DRAWING