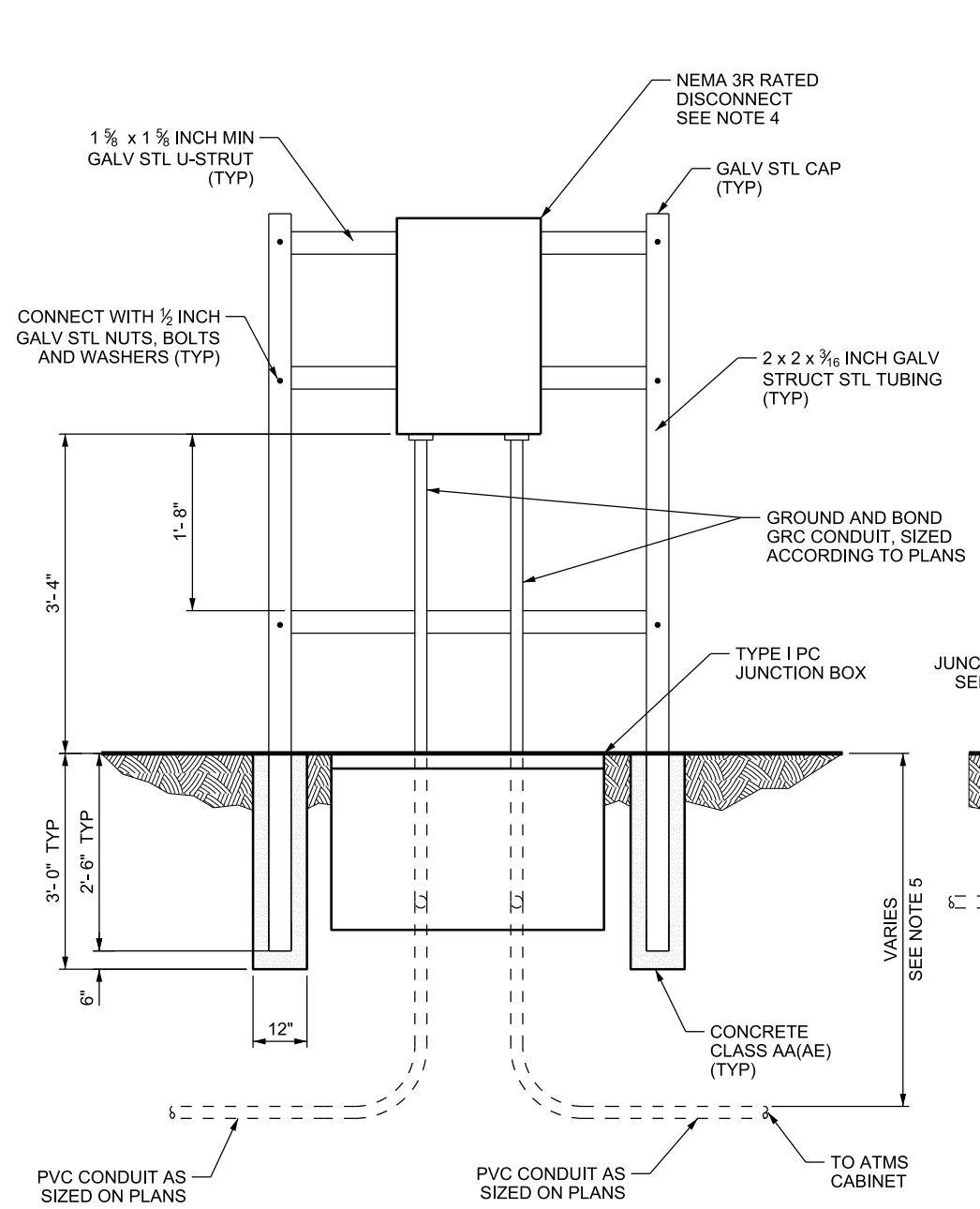
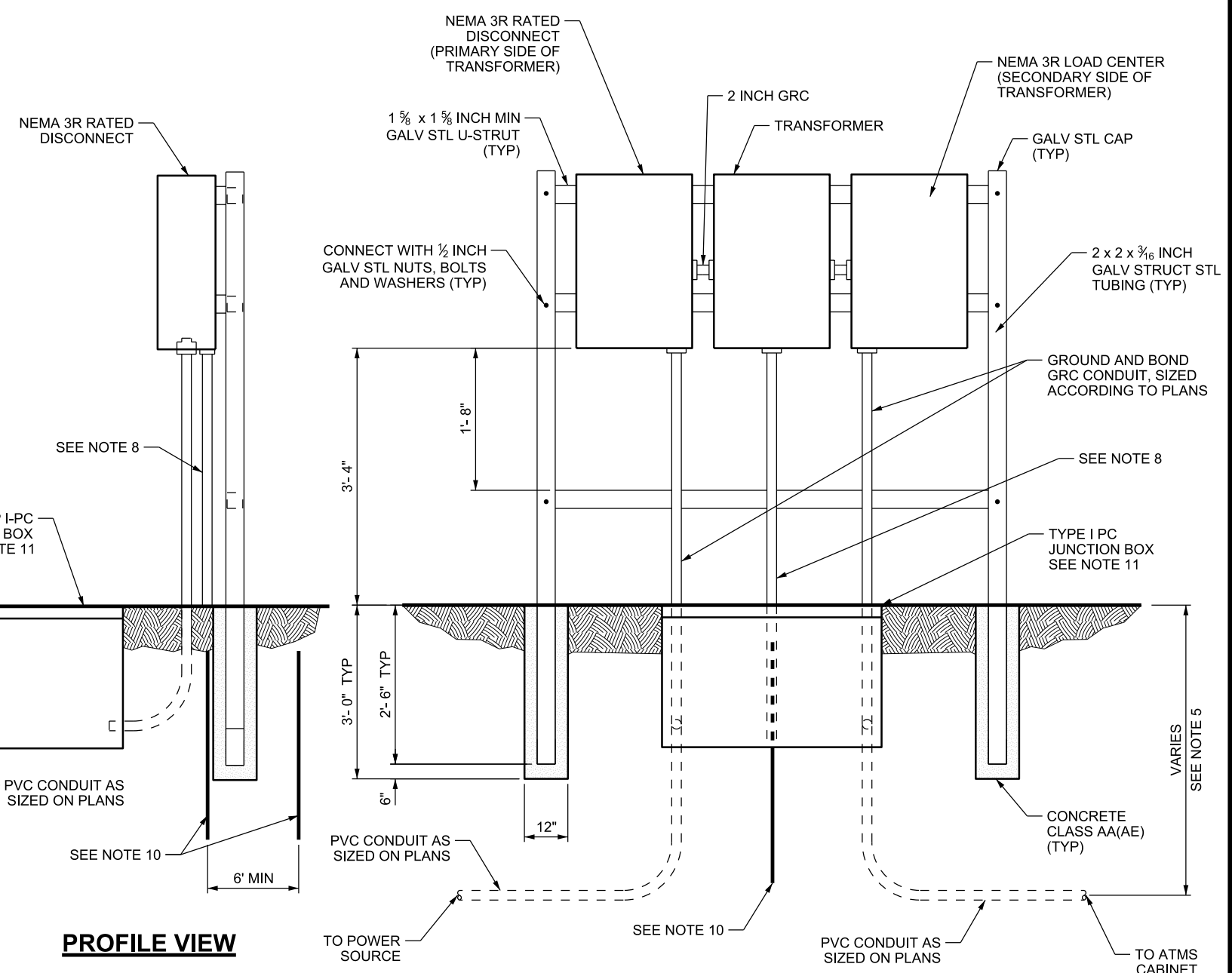


12-SEP-2017 D:\D:\StandardSpecs\Section\2017\Section\11_Supp_Issues\Issue_2_08-31-2017\Drawings\AT09.dgn



A SUPPLEMENTAL DISCONNECT FRAME



B SUPPLEMENTAL DISCONNECT WITH TRANSFORMER FRAME

PROFILE VIEW

NOTES:

1. LOCATE FRAME 10 TO 15 FT FROM CABINET.
2. ROUND OFF SHARP EDGES OF STRUCTURAL TUBING. PAINT CUT ENDS OF FRAMING STRUTS WITH ZINC RICH PAINT.
3. APPLY CORROSION PROTECTION TO PORTION OF STRUT BELOW GRADE.
4. ATTACH TRANSFORMER, DISCONNECT AND LOAD CENTER TO FRAMING STRUT WITH WATERTIGHT GASKETS AND GALVANIZED HARDWARE.
5. REFER TO STANDARD SPECIFICATION 13553 FOR CONDUIT DEPTH.
6. USE ONLY FACTORY PRODUCED CONDUIT SWEEPS.
7. SIZE ENCLOSURE TO ACCOMMODATE CONDUIT SIZES PER PLAN.
8. INSTALL 1 INCH SCHEDULE 80 PVC AS PROTECTION FOR GROUNDING ELECTRODE CONDUCTOR.
9. ALL MATERIALS USED MUST BE RATED FOR THE VOLTAGE AND CURRENT AS SHOWN.
10. INSTALL 2 EACH 10 FT X 3/4 INCH GROUND RODS DIRECTLY BELOW SUPPORT FRAME, SPACED MINIMUM 6 FT APART AT TRANSFORMER LOCATIONS. INSTALL 6 AWG COPPER GROUNDING ELECTRODE CONDUCTOR BETWEEN GROUND RODS 6 INCHES BELOW GRADE AND BOND TO TRANSFORMER SECONDARY ACCORDING TO NEC ARTICLE 250 REQUIREMENTS.
11. LOCATE TYPE I PC JUNCTION BOX MINIMUM 6 FT AND MAXIMUM 10 FT FROM FRAME.

REVISIONS		NO.	DATE	APPR.	REMARKS
1	08/31/17	MMA			CORRECTED DIMENSION ERROR, ADDED REFERENCE TO NOTE 11

UTAH DEPARTMENT OF TRANSPORTATION
 STANDARD DRAWINGS FOR ROAD AND BRIDGE CONSTRUCTION
 SALT LAKE CITY, UTAH

RECOMMENDED FOR APPROVAL
Randy J. [Signature]
 CHAIRMAN STANDARDS COMMITTEE

APPROVED
[Signature]
 DEPUTY DIRECTOR

DATE: AUG. 31, 2017

ATMS CABINET DISCONNECT AND TRANSFORMER FRAME

STANDARD DRAWING TITLE