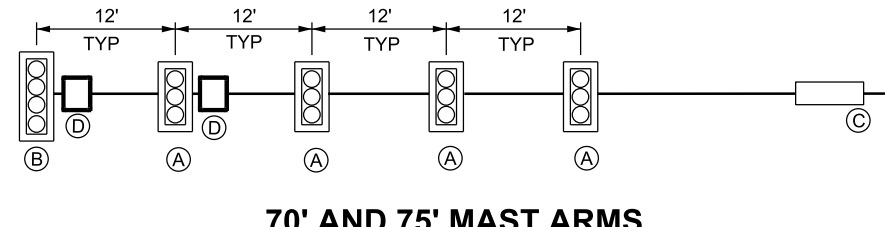


**60' AND 65' MAST ARMS
MAXIMUM LOADING**

(SEE STD DWG SL 1A, NOTES 8 AND A)



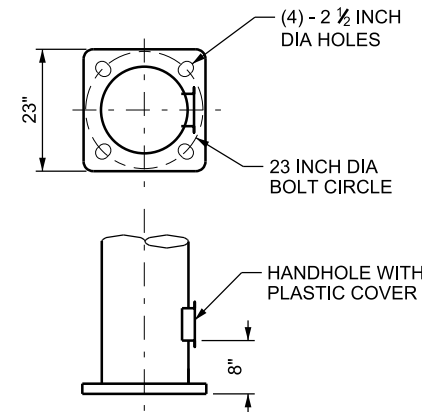
**70' AND 75' MAST ARMS
MAXIMUM LOADING**

(SEE STD DWG SL 1A, NOTES 8 AND A)

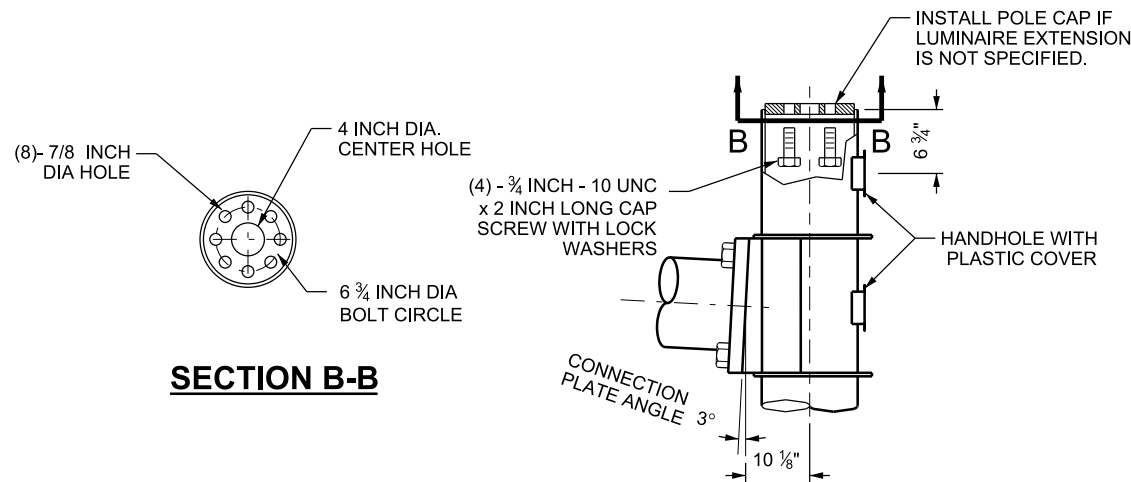
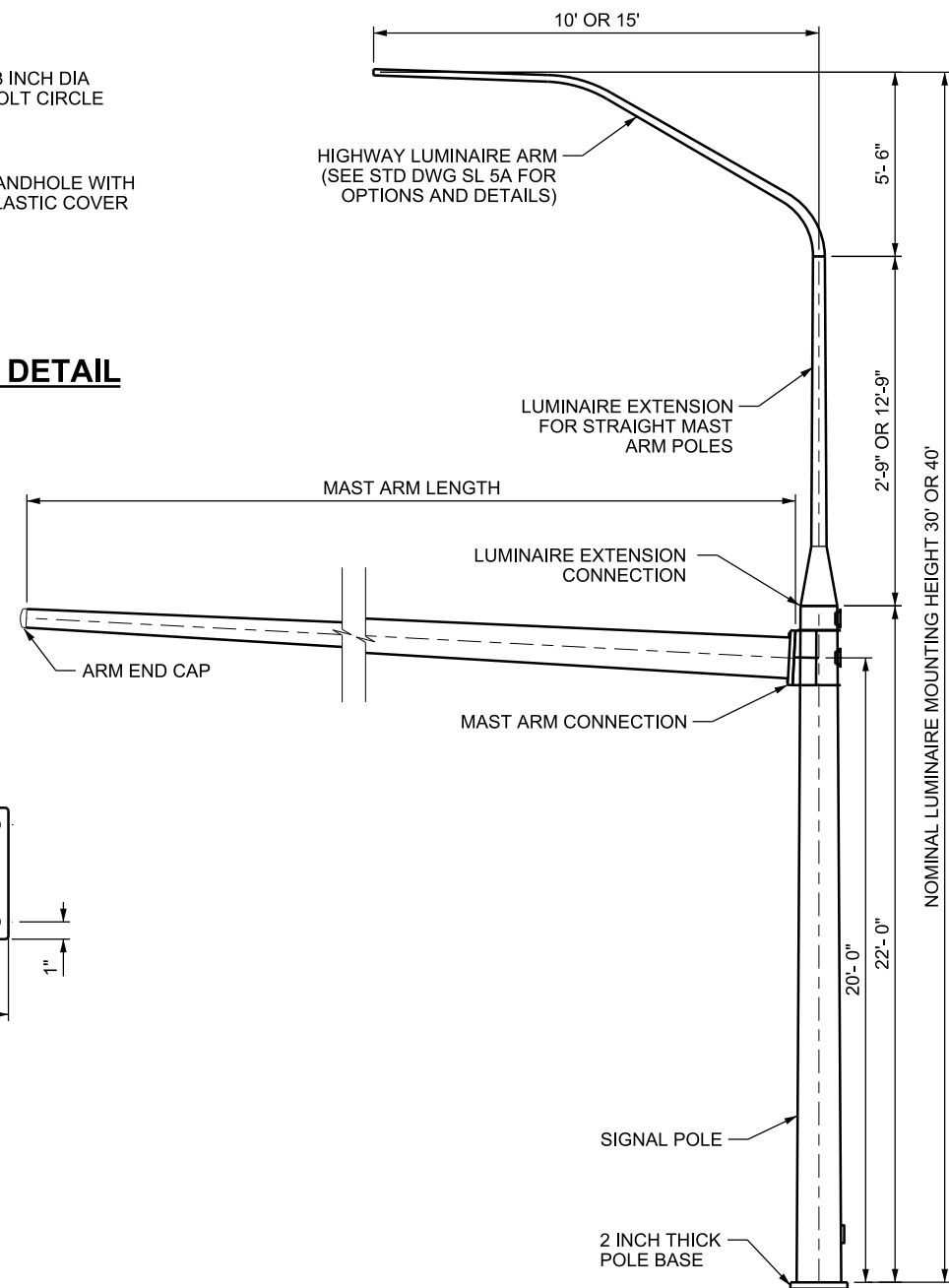
**TYPICAL SIGNAL HEAD & SIGN
PLACEMENT FOR MAXIMUM LOADING**

DEVICE	DESCRIPTION/SIZE	MAXIMUM PROJECTED AREA (SF)	*MAXIMUM WEIGHT (LBS)	MOUNTING (SEE STD DWG SL 3 SERIES)
(A) SIGNAL	12", 3-SECTION WITH BACK PLATE	8.7	55	BRACKET
(B) SIGNAL	12", 4-SECTION WITH BACK PLATE	11.1	72	BRACKET
(C) SIGN	STREET SIGN 18" x 96", OR	12.0	23	OPTION A
	24" x 120", (MAX) OR 30" x 60"	20.0 12.5	38 24	OPTION B OPTION A
(D) SIGN	SIGN 30" x 36" (MAX)	7.5	15	OPTION A
(E) SIGN	BLANKOUT SIGN 36" x 36" (MAX)	9.0	80	BRACKET
(F) SIGN	SIGN 24" x 24"	4.0	8	OPTION A

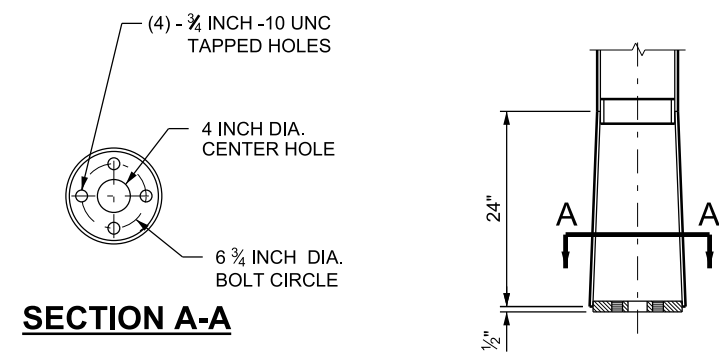
*DOES NOT ACCOUNT FOR PROGRAMMABLE HEADS. SEE STD DWG SL 1A, NOTE A.



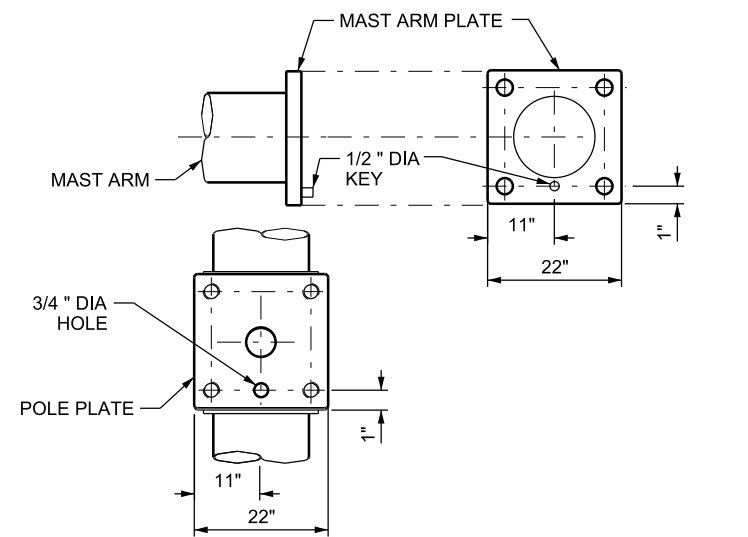
TYPICAL BASE PLATE DETAIL



SECTION B-B



SECTION A-A



60' THRU 75' MAST ARM AND POLE KEY DETAIL

NOTE:

1. SEE STD DWG SL 1A FOR SIGNAL POLE AND MAST ARM GENERAL NOTES.

SUPPLEMENTAL DRAWING

REVISIONS

NO.	DATE	APPR.	REMARKS
1	8/31/17	JS	UPDATED TABLE. REVISED CALLOUTS.

UTAH DEPARTMENT OF TRANSPORTATION
STANDARD DRAWINGS FOR ROAD AND BRIDGE CONSTRUCTION
SALT LAKE CITY, UTAH

RECOMMENDED FOR APPROVAL
Randy J. [Signature]
CHAIRMAN STANDARDS COMMITTEE
APPROVED

DEPUTY DIRECTOR

DATE: AUG. 31, 2017

**TRAFFIC SIGNAL MAST ARM
POLE AND
LUMINAIRE EXTENSION
60 FT THROUGH 75 FT**

STANDARD DRAWING TITLE

STD. DWG. NO.

SL 1B