

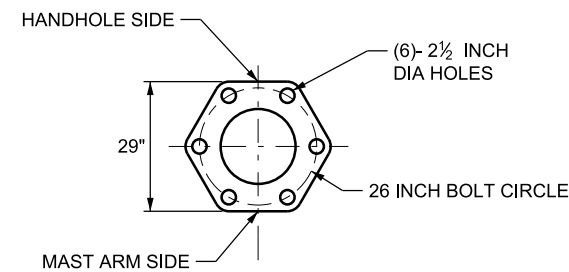
**80' AND 85' MAST ARMS
MAXIMUM LOADING**

(SEE STD DWG SL 1A, NOTES 8 AND A)

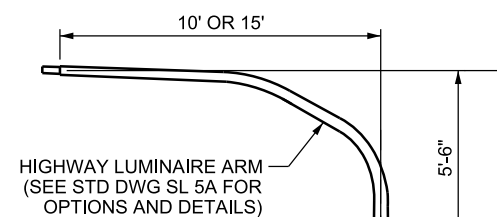
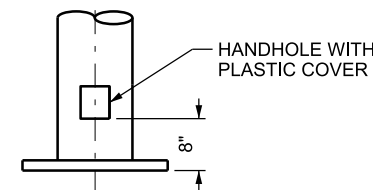
**TYPICAL SIGNAL HEAD & SIGN
PLACEMENT FOR MAXIMUM LOADING**

DEVICE	DESCRIPTION/SIZE	MAXIMUM PROJECTED AREA (SF)	*MAXIMUM WEIGHT (LBS)	MOUNTING (SEE STD DWG SL 3 SERIES)
(A) SIGNAL	12", 3-SECTION WITH BACK PLATE	8.7	55	BRACKET
(B) SIGNAL	12", 4-SECTION WITH BACK PLATE	11.1	72	BRACKET
(C) SIGN	STREET SIGN 18" x 96", OR	12.0	23	OPTION A
	24" x 120", (MAX) OR 30" x 60"	20.0 12.5	38 24	OPTION B OPTION A
(D) SIGN	SIGN 30" x 36" (MAX)	7.5	15	OPTION A
(E) SIGN	BLANKOUT SIGN 36" x 36" (MAX)	9.0	80	BRACKET
(F) SIGN	SIGN 24" x 24"	4.0	8	OPTION A

*DOES NOT ACCOUNT FOR PROGRAMMABLE HEADS. SEE STD DWG SL 1A, NOTE A.

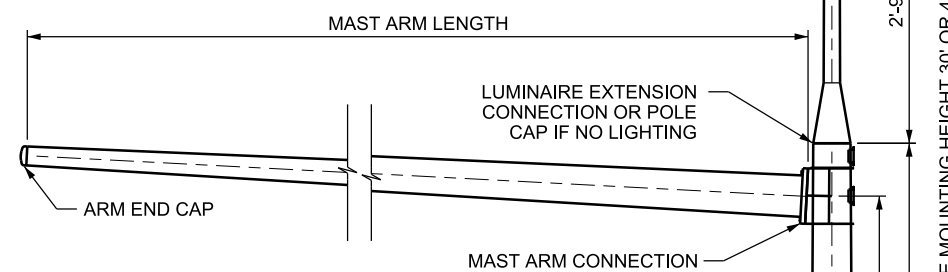


BASE PLATE DETAIL



HIGHWAY LUMINAIRE ARM
(SEE STD DWG SL 5A FOR
OPTIONS AND DETAILS)

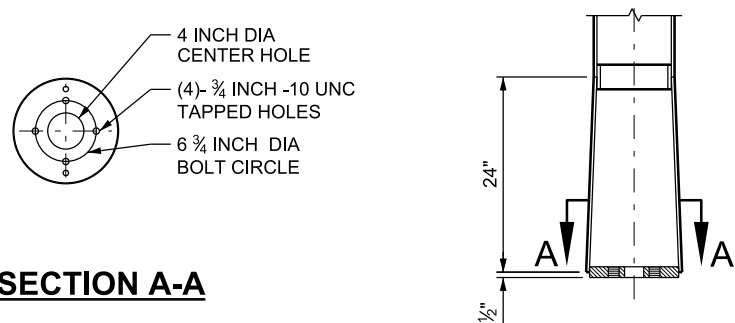
LUMINAIRE EXTENSION
FOR STRAIGHT MAST
ARM POLES



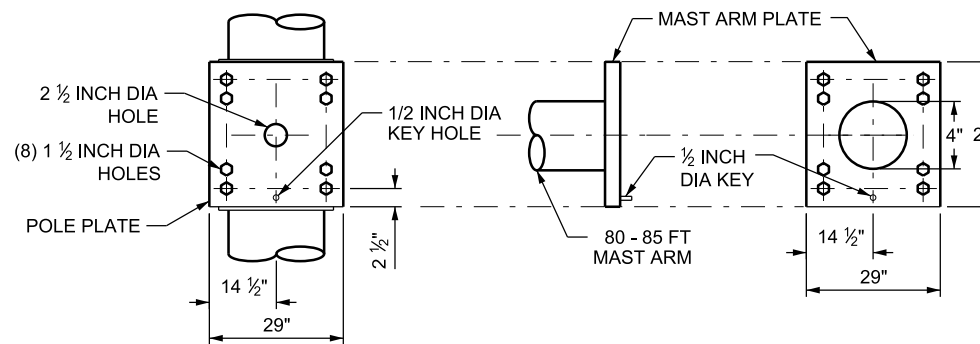
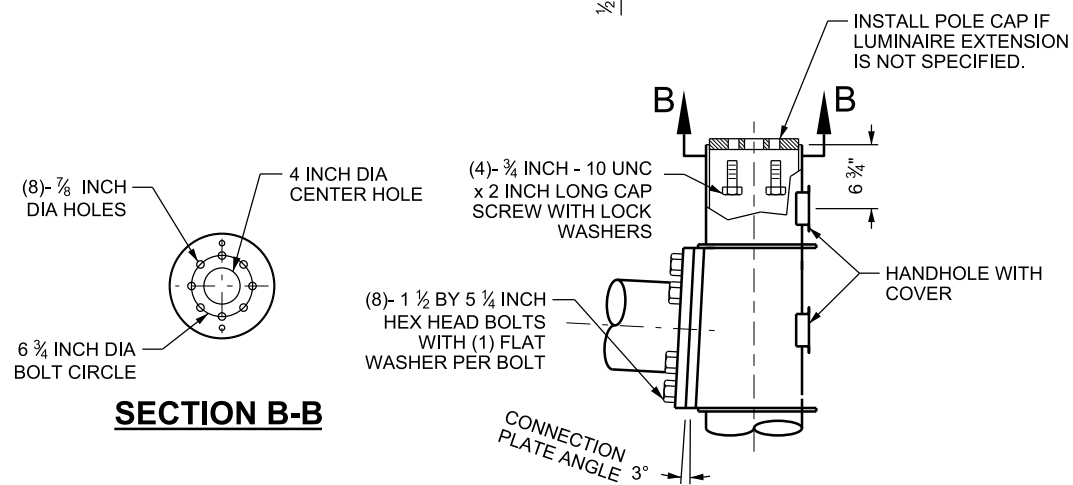
MAST ARM CONNECTION

NOMINAL LUMINAIRE MOUNTING HEIGHT 30' OR 40'

SECTION A-A



SECTION B-B



80' TO 85' MAST ARM AND POLE PLATE DETAIL

TYPE C
SIGNAL POLE
2 INCH THICK
POLE BASE

NOTE:

1. SEE STD DWG SL 1A FOR SIGNAL POLE AND MAST ARM GENERAL NOTES.

SUPPLEMENTAL DRAWING

NO.	DATE	APPR.	REMARKS
1	8/31/17	JS	UPDATED DETAIL, CALLOUTS, AND TABLE.

UTAH DEPARTMENT OF TRANSPORTATION
STANDARD DRAWINGS FOR ROAD AND BRIDGE CONSTRUCTION
SALT LAKE CITY, UTAH

RECOMMENDED FOR APPROVAL
Randy J. [Signature]
CHAIRMAN STANDARDS COMMITTEE
APPROVED
DEPUTY DIRECTOR

DATE: AUG. 31, 2017
DATE: AUG. 31, 2017

**TRAFFIC SIGNAL MAST ARM
POLE AND
LUMINAIRE EXTENSION
80 FT THROUGH 85 FT**

STANDARD DRAWING TITLE

STD. DWG. NO.

SL 1C