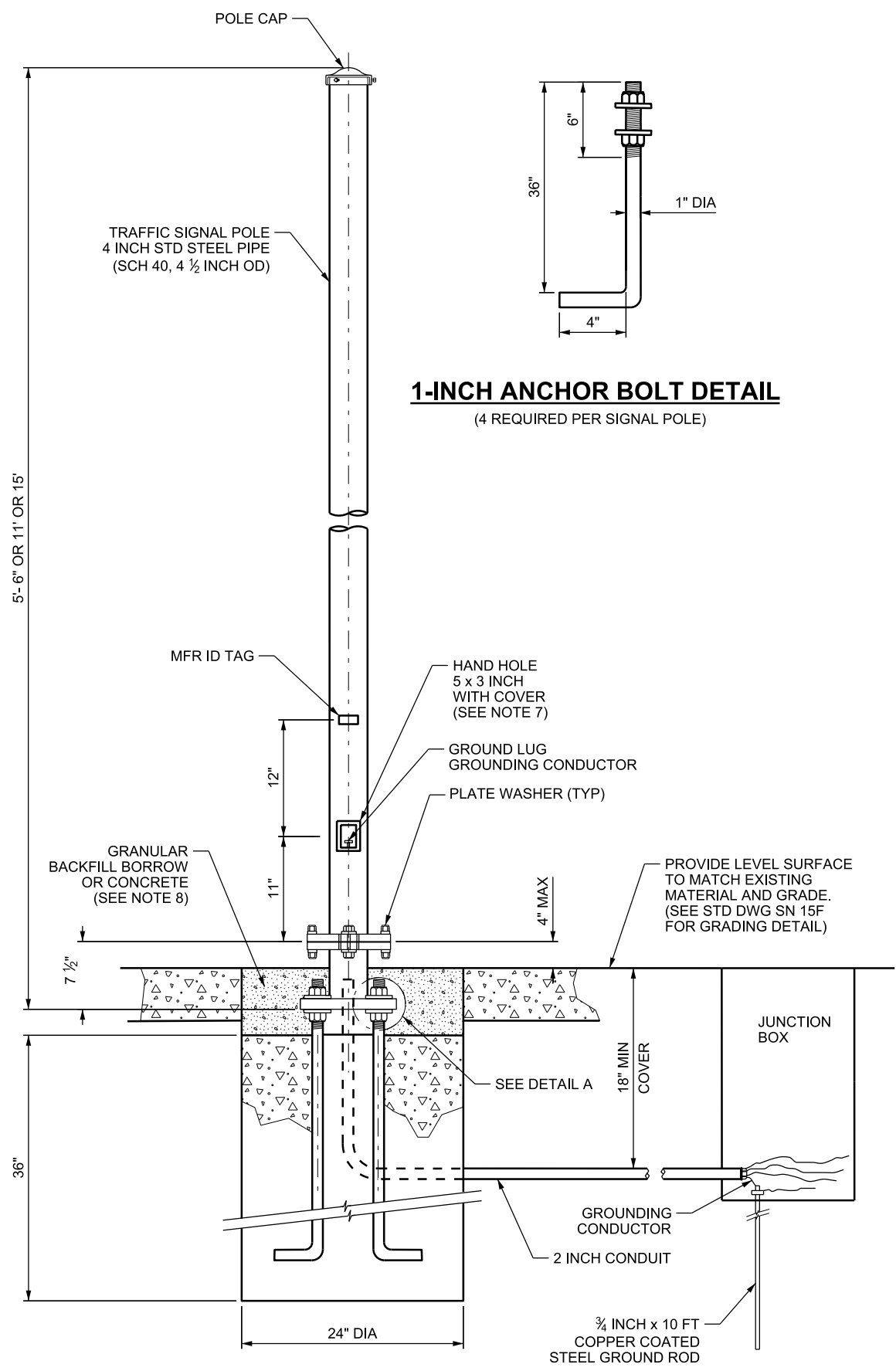
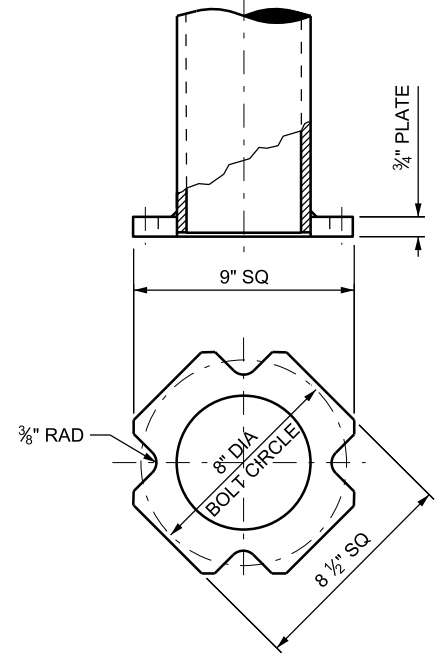
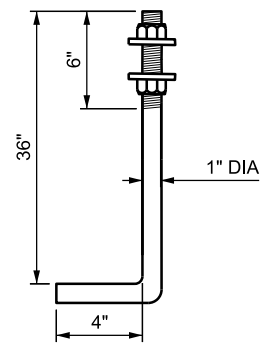


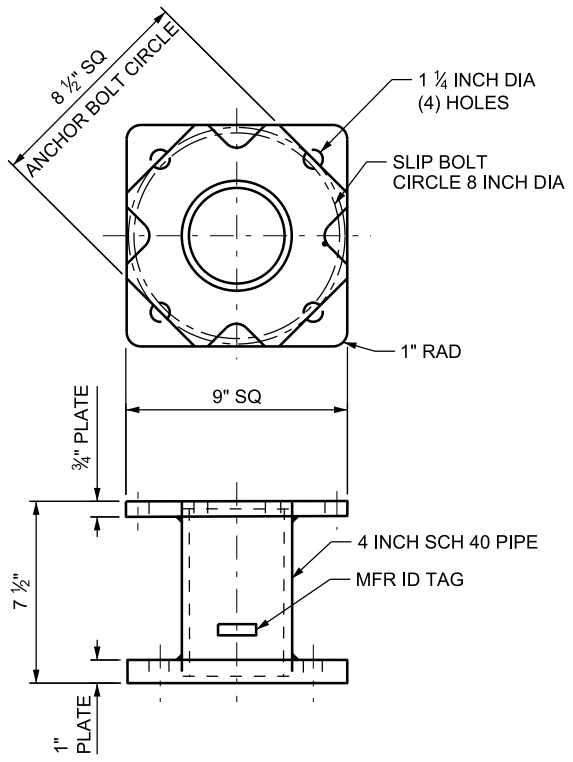
12-SEP-2017 DGN File: D:\StandardSpec\Section\2017\Section\11_Supp_Issues\Issue 2 08-31-2017\Drawings\SL1E.dgn



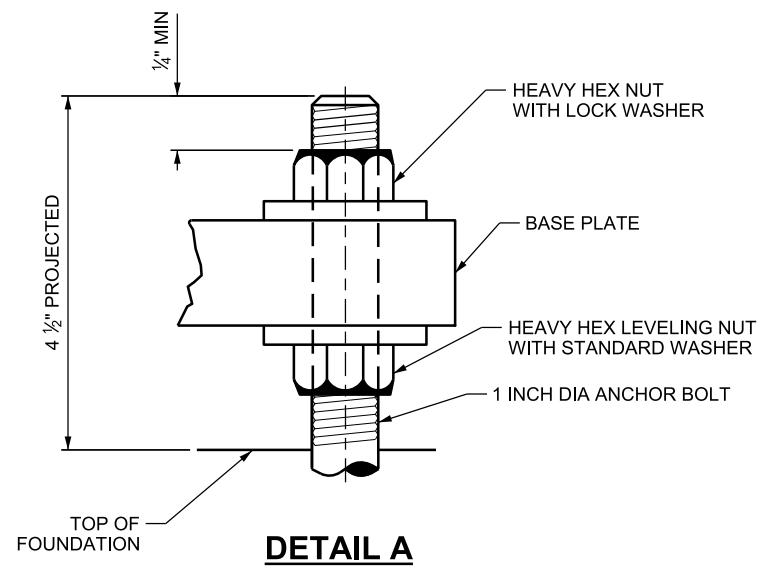
1-INCH ANCHOR BOLT DETAIL
(4 REQUIRED PER SIGNAL POLE)



POLE BASE



GROUND BASE



DETAIL A

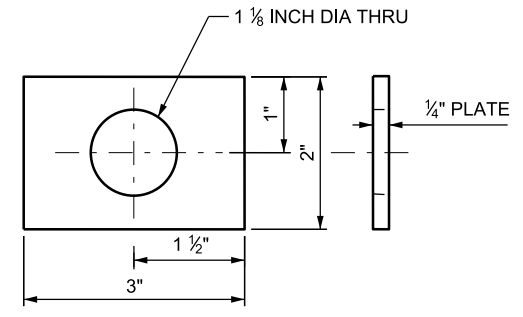


PLATE WASHER
FOR SLIP BASE BOLTS
(2 REQUIRED EACH BOLT)

NOTES:

1. TRAFFIC SIGNAL POLE, SLIP BASE, FOUNDATION ANCHOR BOLTS, AND RELATED HARDWARE ARE STATE FURNISHED ITEMS.
2. ALL STEEL MATERIALS INCLUDING ANCHOR BOLTS ARE HOT-DIPPED GALVANIZED. AVOID DAMAGING THE GALVANIZED FINISH OF MATERIALS DURING TRANSPORT AND PLACEMENT.
3. USE CLASS AA(AE) CAST-IN-PLACE CONCRETE FOR FOUNDATION. CAP CONDUIT ON BOTH ENDS PRIOR TO PLACING CONCRETE.
4. USE STATE FURNISHED 5/8 x 3 INCH SLIP BOLTS. TORQUE EACH BOLT TO 80 FT-LBS. RELEASE AND RE-TORQUE TO 70 FT-LBS.
5. SEE STD DWG SN 15F FOR BREAKAWAY SUPPORT STUB HEIGHT MEASUREMENT.
6. REFER TO STD DWG SL 3B AND SL 6A FOR SIGNAL AND PEDESTRIAN HEAD DETAILS.
7. ORIENT SIGNAL POLE SUCH THAT A TECHNICIAN FACING THE HAND HOLE WILL FACE THE ROADWAY OR ONCOMING TRAFFIC.
8. MATCH EXISTING SURFACE IF SURROUNDING MATERIAL IS NOT CONCRETE. USE GRANULAR BACKFILL BORROW, IF FOUNDATION IS NOT SURROUNDED BY SURFACE TREATMENT, FROM TOP OF FOUNDATION TO FINISHED GRADE.

SUPPLEMENTAL DRAWING

REVISIONS		NO.	DATE	APPR.	REMARKS
1	8/31/17	JS			REVISED DETAIL, CALLOUTS AND NOTES.

UTAH DEPARTMENT OF TRANSPORTATION
STANDARD DRAWINGS FOR ROAD AND BRIDGE CONSTRUCTION
SALT LAKE CITY, UTAH

RECOMMENDED FOR APPROVAL
[Signature]
CHAIRMAN STANDARDS COMMITTEE APPROVED

DEPUTY DIRECTOR

DATE: AUG. 31, 2017

TRAFFIC SIGNAL POLE

STANDARD DRAWING TITLE

STD. DWG. NO.
SL 1E