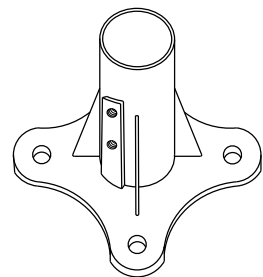
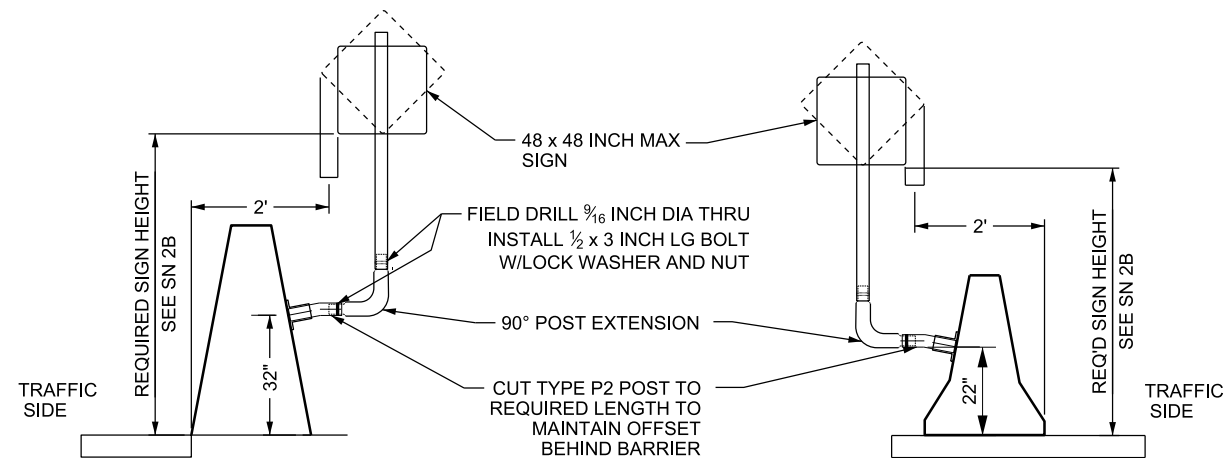
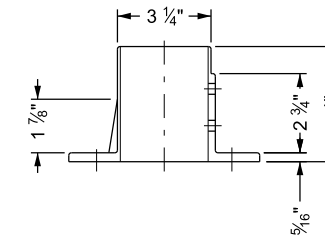
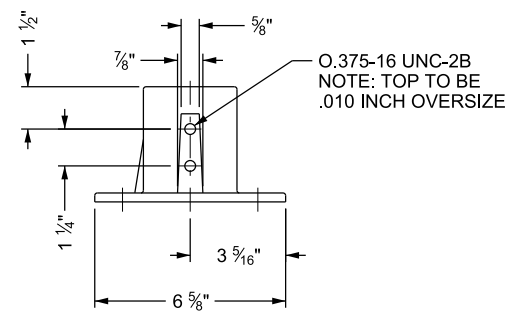
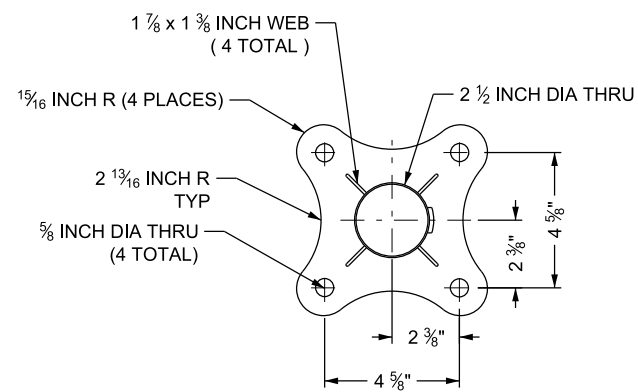


12-SEP-2017 10:58:00 AM D:\StandardSpecs\Section\2017\Section\All_Supp_Issues\Issue 2 08-31-2017\Drawings\BNI3.dgn



BASE CASTING
ASTM A 536 65-45-12
DUCTILE IRON
SEE NOTE A

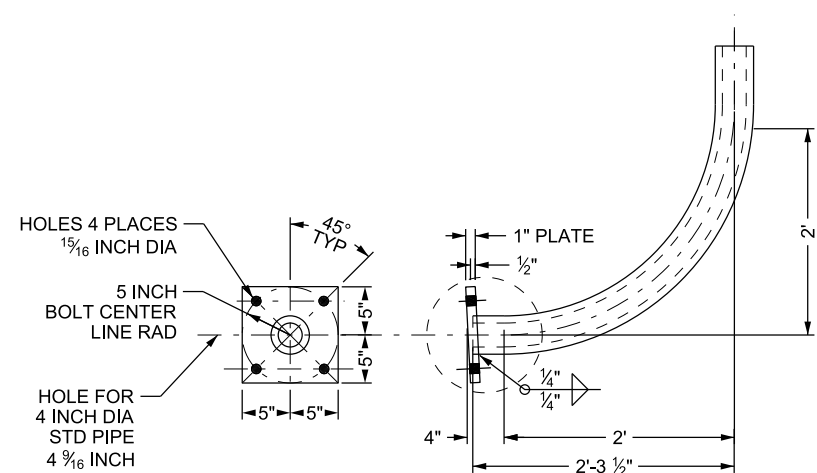


HORIZONTAL INSTALLATION NOTE: USE A 90 DEGREE POST EXTENSION WHEN MOUNTED HORIZONTALLY. REFER TO STD DWG SN 9A FOR POST EXTENSION REQUIREMENTS. FORM SIGN SUPPORT SYSTEM SO SIGN POST IS PLUMB.

HORIZONTAL INSTALLATION

MOUNTING HARDWARE:
4- EACH 1/2 x 4 INCH MECHANICAL WEDGE ANCHORS.
4- EACH 1/2 INCH FLAT WASHERS
4- EACH 1/2 INCH LOCK WASHERS
4- EACH 1/2 INCH NUTS
2- EACH BEVELED WASHERS. REQUIRED FOR HORIZONTAL MOUNTING ONLY.
ALL HARDWARE WILL BE GALVANIZED OR ZINC PLATED.

INSTALLATION REQUIREMENTS:
DRILL: 4 - 1/2 INCH HOLES 4 1/2 INCHES DEEP.
CLEAN HOLE PRIOR TO INSTALLING ANCHORS



SIDE MOUNTED BARRIER BASE

TUBULAR STEEL SIGN BASE SURFACE MOUNT (B4B) FOR 2 3/8 INCH DIAMETER POSTS (P1 OR P2 POSTS)

NOTES:

- USE P1 OR P2 POST. REFER TO STD DWG SN 11A.

DESIGN-ONLY NOTES:

- USE BASE CASTING INSTALLATION ONLY ON ROADS WITH POSTED SPEED OF 45 MPH OR LOWER AND ONLY IN RETROFIT INSTALLATIONS UNDER THE DIRECTION OF THE REGION TRAFFIC ENGINEER.

SUPPLEMENTAL DRAWING

REVISIONS	
NO.	DATE
1	8/31/17
	APPR.
	CGW
CORRECTED NOTE A AND TITLE FOR SIDE MOUNTED BARRIER DETAIL	
REMARKS	

UTAH DEPARTMENT OF TRANSPORTATION
STANDARD DRAWINGS FOR ROAD AND BRIDGE CONSTRUCTION
SALT LAKE CITY, UTAH

RECOMMENDED FOR APPROVAL
Randy A. Clark
CHAIRMAN STANDARDS COMMITTEE

APPROVED
[Signature]
DEPUTY DIRECTOR

DATE: AUG. 31, 2017
DATE: AUG. 31, 2017

SIDE MOUNTED TUBULAR STEEL SIGN BASE (B4B)

STANDARD DRAWING TITLE

STD. DWG. NO. SN 13