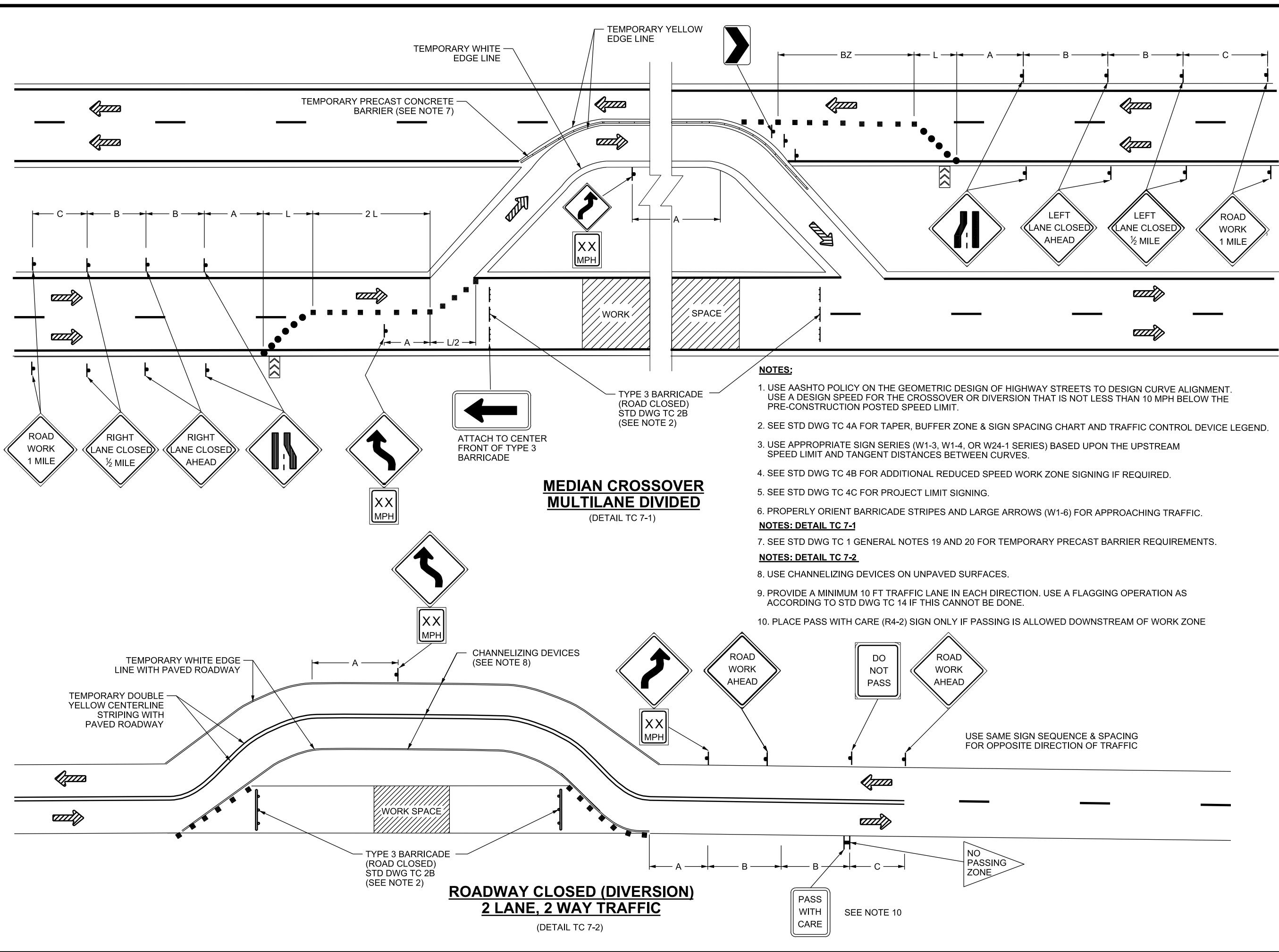


12-SEP-2017 DGN File: D:\StandardSpec\Section\2017\Section\All\_Supp\_Issues\Issue\_2\_08-31-2017\Drawings\TC07.dgn



- NOTES:**
1. USE AASHTO POLICY ON THE GEOMETRIC DESIGN OF HIGHWAY STREETS TO DESIGN CURVE ALIGNMENT. USE A DESIGN SPEED FOR THE CROSSOVER OR DIVERSION THAT IS NOT LESS THAN 10 MPH BELOW THE PRE-CONSTRUCTION POSTED SPEED LIMIT.
  2. SEE STD DWG TC 4A FOR TAPER, BUFFER ZONE & SIGN SPACING CHART AND TRAFFIC CONTROL DEVICE LEGEND.
  3. USE APPROPRIATE SIGN SERIES (W1-3, W1-4, OR W24-1 SERIES) BASED UPON THE UPSTREAM SPEED LIMIT AND TANGENT DISTANCES BETWEEN CURVES.
  4. SEE STD DWG TC 4B FOR ADDITIONAL REDUCED SPEED WORK ZONE SIGNING IF REQUIRED.
  5. SEE STD DWG TC 4C FOR PROJECT LIMIT SIGNING.
  6. PROPERLY ORIENT BARRICADE STRIPES AND LARGE ARROWS (W1-6) FOR APPROACHING TRAFFIC.
- NOTES: DETAIL TC 7-1**
7. SEE STD DWG TC 1 GENERAL NOTES 19 AND 20 FOR TEMPORARY PRECAST BARRIER REQUIREMENTS.
- NOTES: DETAIL TC 7-2**
8. USE CHANNELIZING DEVICES ON UNPAVED SURFACES.
  9. PROVIDE A MINIMUM 10 FT TRAFFIC LANE IN EACH DIRECTION. USE A FLAGGING OPERATION AS ACCORDING TO STD DWG TC 14 IF THIS CANNOT BE DONE.
  10. PLACE PASS WITH CARE (R4-2) SIGN ONLY IF PASSING IS ALLOWED DOWNSTREAM OF WORK ZONE

NO.	DATE	APPR.	REMARKS

**UTAH DEPARTMENT OF TRANSPORTATION**  
 STANDARD DRAWINGS FOR ROAD AND BRIDGE CONSTRUCTION  
 SALT LAKE CITY, UTAH

RECOMMENDED FOR APPROVAL  
*[Signature]*  
 CHAIRMAN STANDARDS COMMITTEE  
 APPROVED

DEPUTY DIRECTOR

DATE: AUG.31.2017  
 DATE: AUG.31.2017

**MEDIAN CROSSOVER AND 2-LANE, 2-WAY DIVERSION**

STANDARD DRAWING TITLE

STD. DWG. NO.  
**TC 7**