

DGN File: D:\StandardSpec\Section\2017\Section\11_Supp_Issues\Issue 4 02-22-2018\Drawings\SL6F.dgn

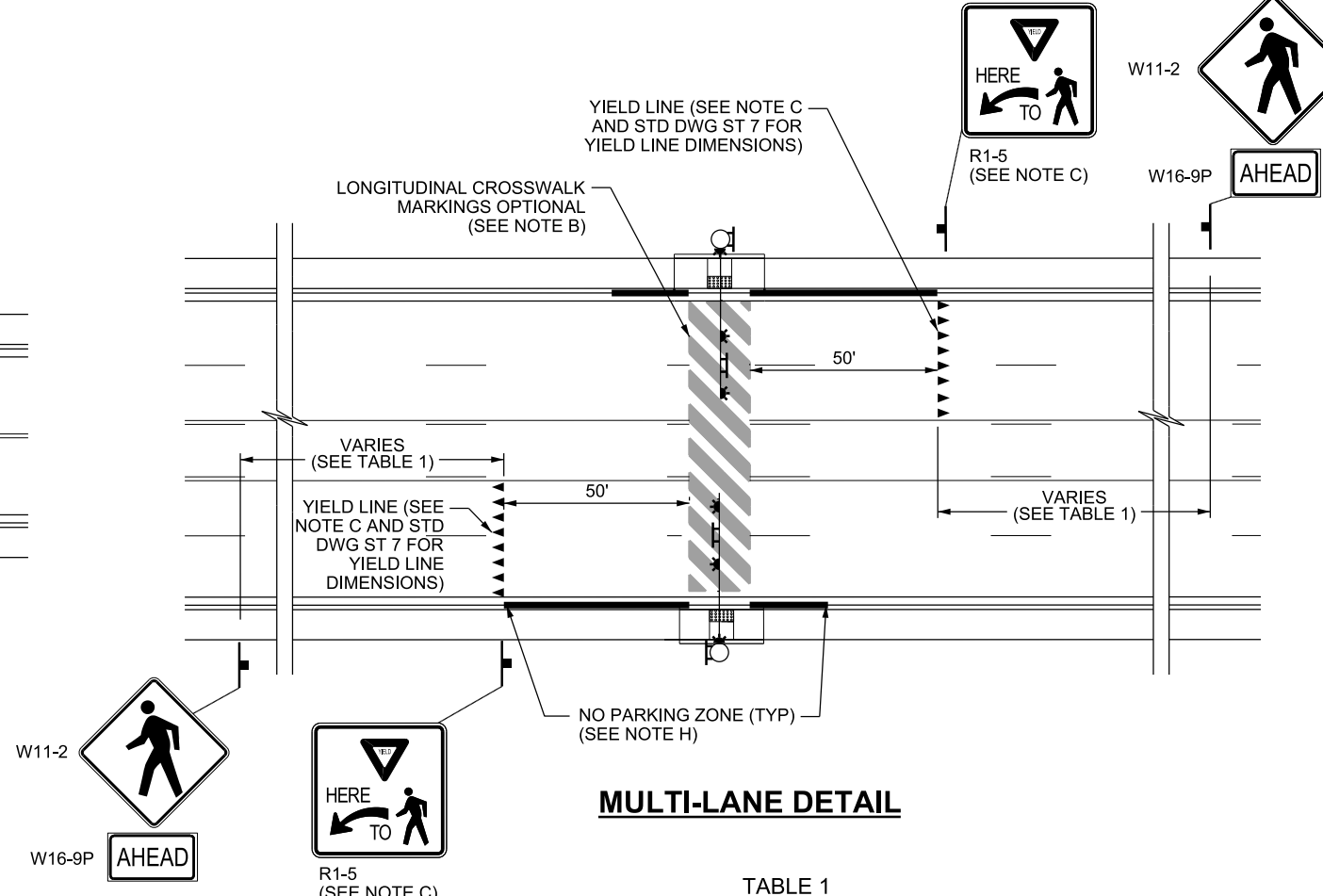
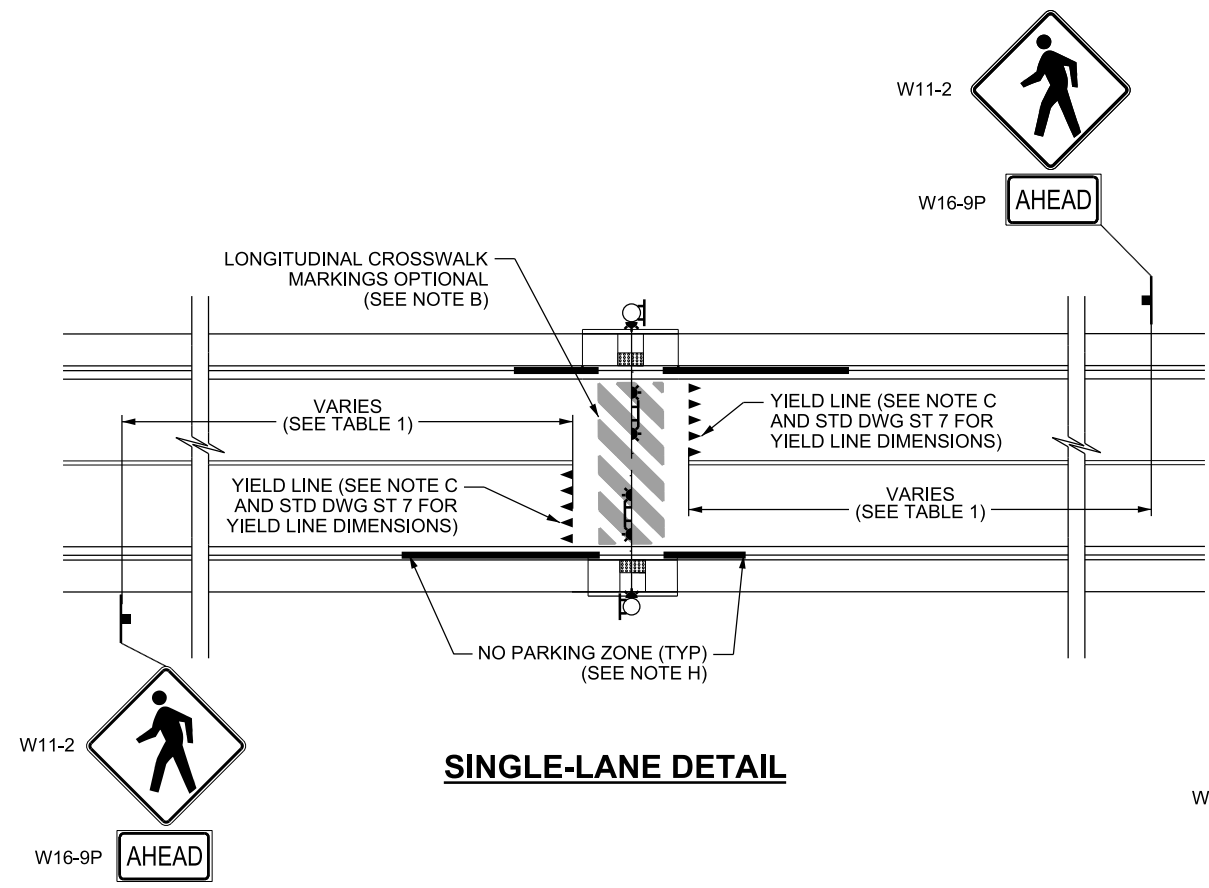
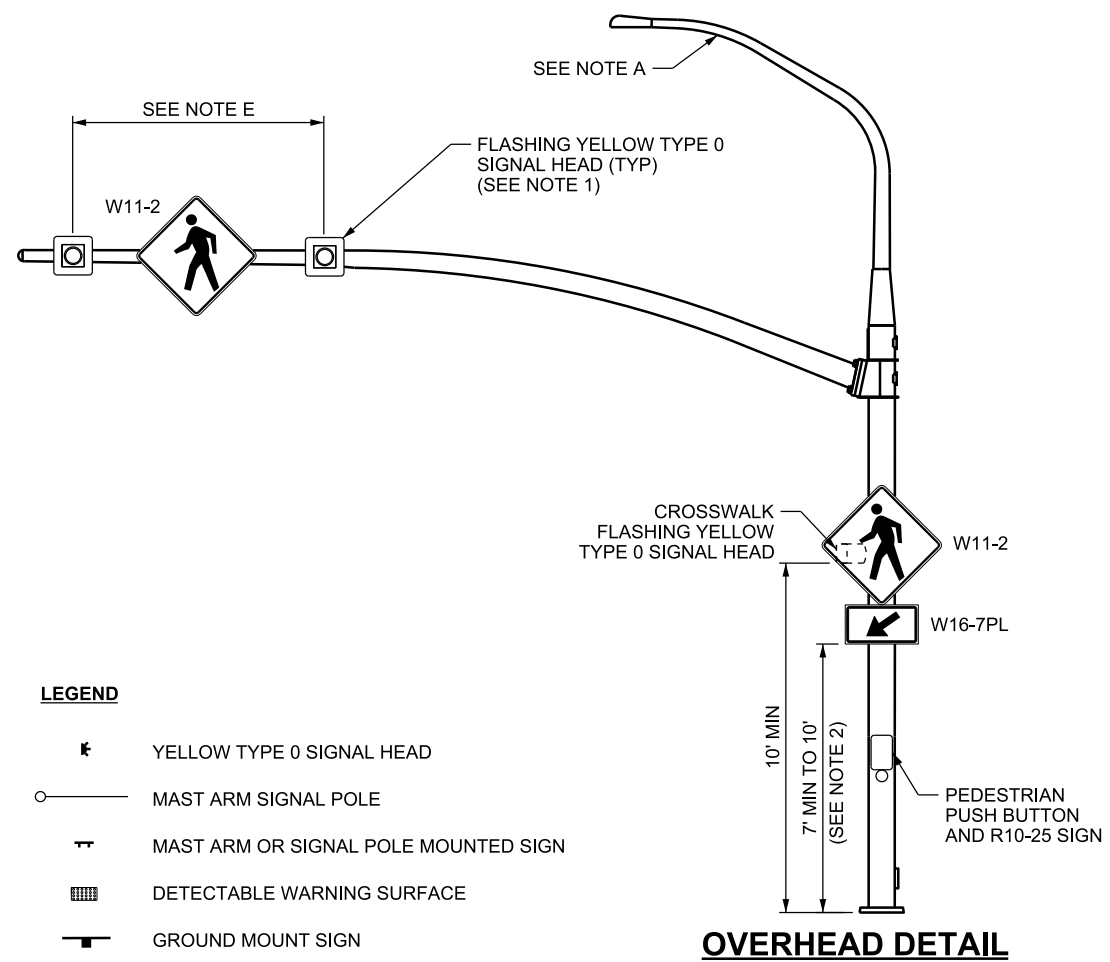


TABLE 1
GUIDELINES FOR ADVANCE PLACEMENT OF PEDESTRIAN CROSSING WARNING SIGNS
(SEE UTAH MUTCD TABLE 2C-4 FOR COMPLETE TABLE)

POSTED SPEED	ADVANCE PLACEMENT DISTANCE
20-35 MPH	100 FT
40 MPH	125 FT
45 MPH	175 FT



LEGEND

- ☐ YELLOW TYPE 0 SIGNAL HEAD
- MAST ARM SIGNAL POLE
- ⊥ MAST ARM OR SIGNAL POLE MOUNTED SIGN
- ▨ DETECTABLE WARNING SURFACE
- ⊥ GROUND MOUNT SIGN

NOTES:

1. DO NOT PLACE RETROREFLECTIVE TAPE ON TYPE 0 SIGNAL HEAD BACKPLATES.
2. INCREASE MOUNTING HEIGHT OF W11-2 SIGN AND W16-7PL PLAQUE IF BLOCKED BY OTHER SIGNS OR OBSTRUCTIONS. USE A 10 FT MOUNTING HEIGHT TO BOTTOM OF W16-7PL PLAQUE IN MULTI-LANE SITUATIONS TO PREVENT VISUAL BLOCKING BY R1-5 SIGN.

DESIGN-ONLY NOTES:

- A. INSTALL STREET LIGHTING UNLESS DIRECTED OTHERWISE BY REGION TRAFFIC OPERATIONS ENGINEER.
- B. USE LONGITUDINAL CROSSWALK MARKINGS WHEN REQUIRED BY REGION TRAFFIC OPERATIONS ENGINEER.
- C. PLACE YIELD LINE 4 FT FROM CROSSWALK ON SINGLE-LANE APPROACHES OR 50 FT FOR MULTI-LANE APPROACHES. USE "YIELD HERE TO PEDESTRIANS" R1-5 SIGN FOR MULTI-LANE APPROACHES.
- D. REFER TO UTAH MUTCD PART 7 FOR REQUIREMENTS AT SCHOOL CROSSINGS.
- E. CENTER SIGNAL HEAD IN EACH THRU LANE. PROVIDE W11-2 SIGN BETWEEN ALL SIGNAL HEADS. FOR SINGLE THRU LANE APPROACHES, CENTER W11-2 SIGN IN THE LANE AND SPACE SIGNAL HEADS AT LEAST 8 FT APART.
- F. DO NOT INSTALL FLASHING BEACON CROSSWALK ON ROADWAYS WITH SPEEDS GREATER THAN 45 MPH UNLESS DIRECTED BY REGION TRAFFIC OPERATIONS ENGINEER. SEE STD DWG DD 18.
- G. PLACE FLASHING BEACON ASSEMBLIES ON A SINGLE OR TWO SEPARATE MAST ARMS.
- H. PLACE "NO PARKING SIGNS" TO PROHIBIT PARKING 50 FT BEFORE CROSSWALK AND 20 FT AFTER CROSSWALK FOR EACH APPROACH. NO ACCESSES ARE ALLOWED IN THIS AREA.
- I. DO NOT INSTALL FLASHING BEACON CROSSWALK WITHIN A REDUCED SPEED SCHOOL ZONE.
- J. A MULTI-LANE APPROACH HAS TWO OR MORE LANES MOVING TOWARD THE INTERSECTION, INCLUDING TURNING LANES.

REVISIONS

NO.	DATE	APPR.	REMARKS
1	2/22/18	JS	UPDATED CALLOUTS, NOTES AND GRAPHICS. DELETED YIELD LINE DISTANCE TABLE.

UTAH DEPARTMENT OF TRANSPORTATION
STANDARD DRAWINGS FOR ROAD AND BRIDGE CONSTRUCTION
SALT LAKE CITY, UTAH

RECOMMENDED FOR APPROVAL
Randy L. Park
CHAIRMAN STANDARD COMMITTEE

APPROVED
[Signature]
DEPUTY DIRECTOR

DATE: FEB. 22, 2018
DATE: FEB. 22, 2018

OVERHEAD FLASHING BEACON AT A MIDBLOCK CROSSWALK

STANDARD DRAWING TITLE

STD. DWG. NO. **SL 6F**

SUPPLEMENTAL DRAWING