

DGN File: D:\Standard\Spec\Section\2017\Section\All_Supp_Issues\Issue 4 02-22-2018\Drawings\SL 06D.dgn 07-MAR-2018

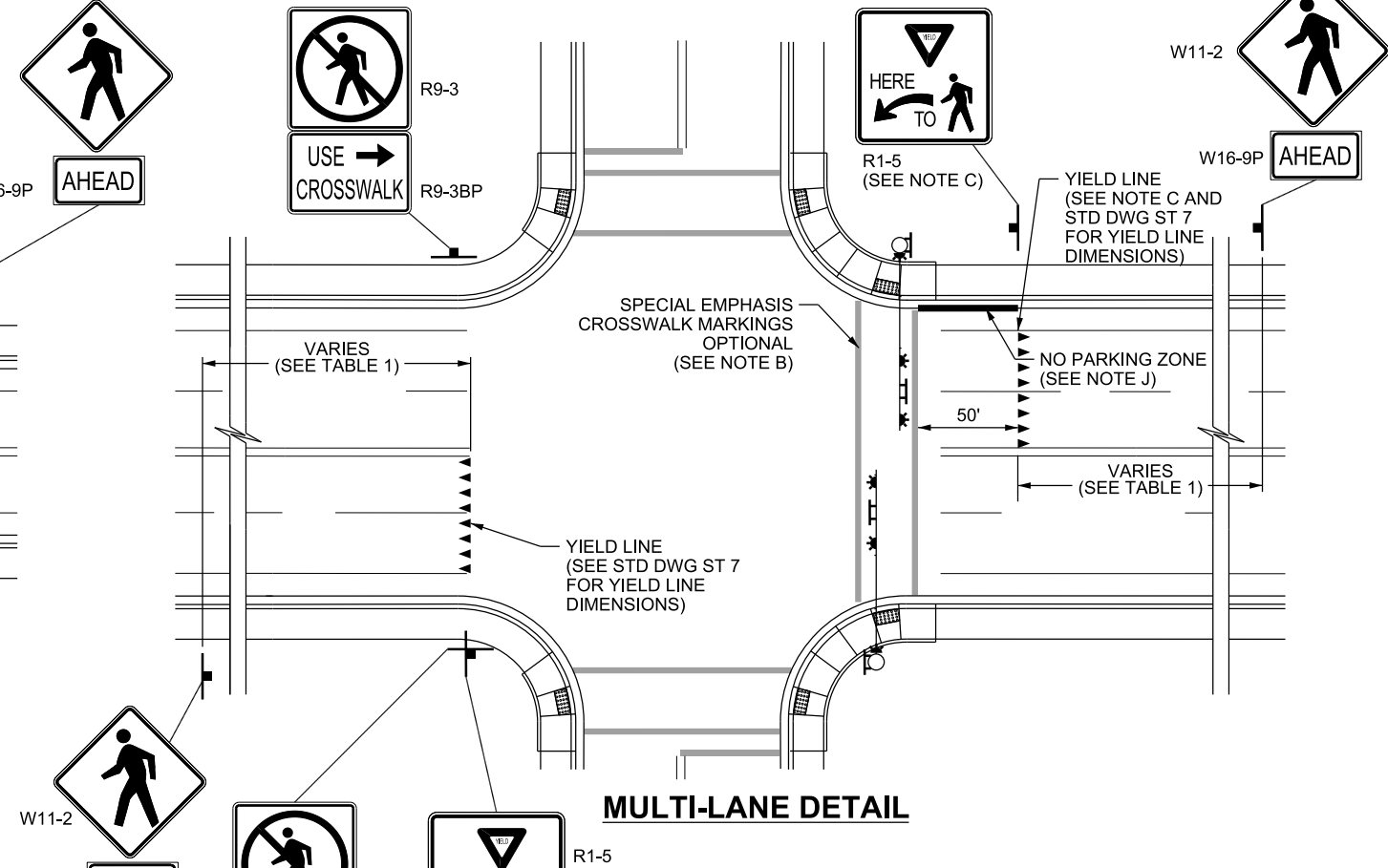
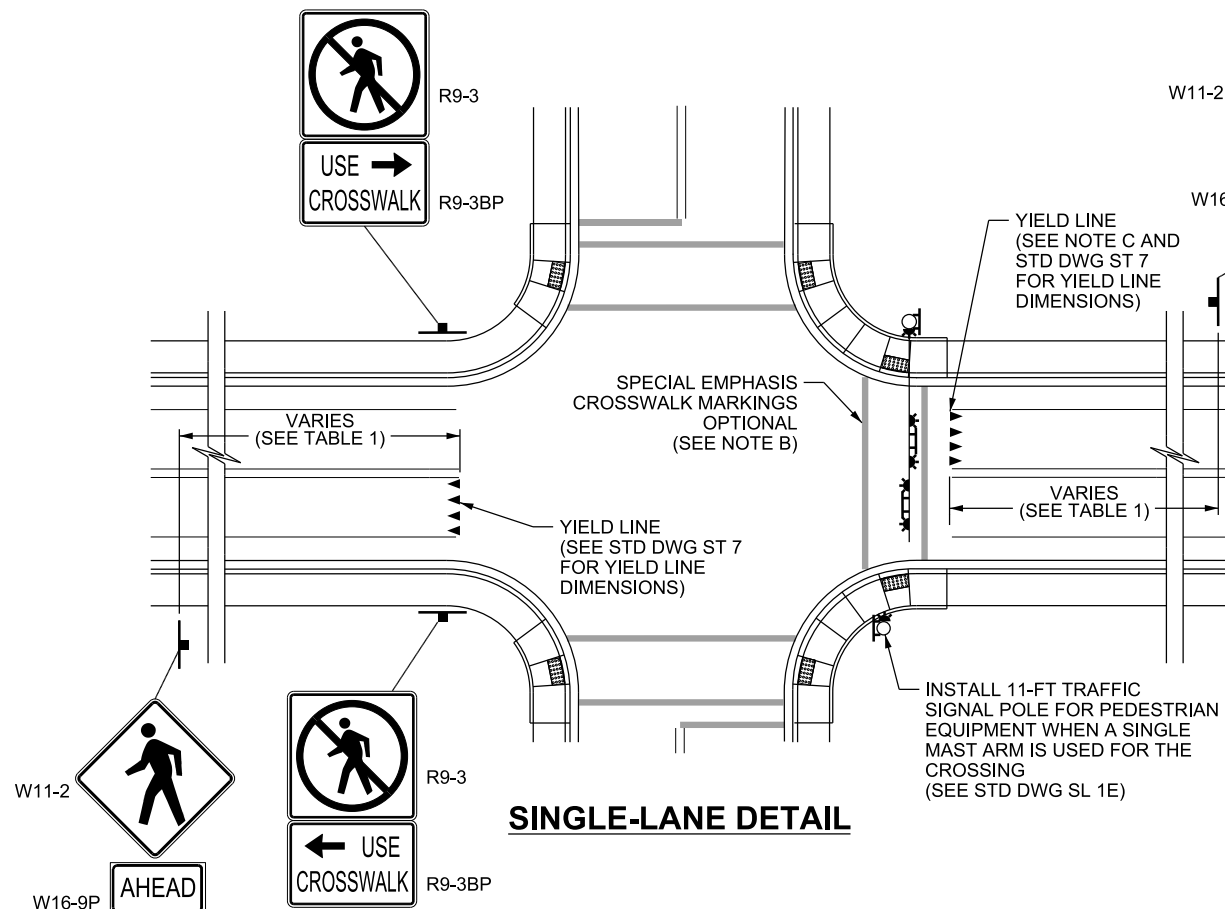


TABLE 1
GUIDELINES FOR ADVANCE PLACEMENT OF PEDESTRIAN CROSSING WARNING SIGNS (SEE UTAH MUTCD TABLE 2C-4 FOR COMPLETE TABLE)

POSTED SPEED	ADVANCE PLACEMENT DISTANCE
20-35 MPH	100 FT
40 MPH	125 FT
45 MPH	175 FT

NOTES:

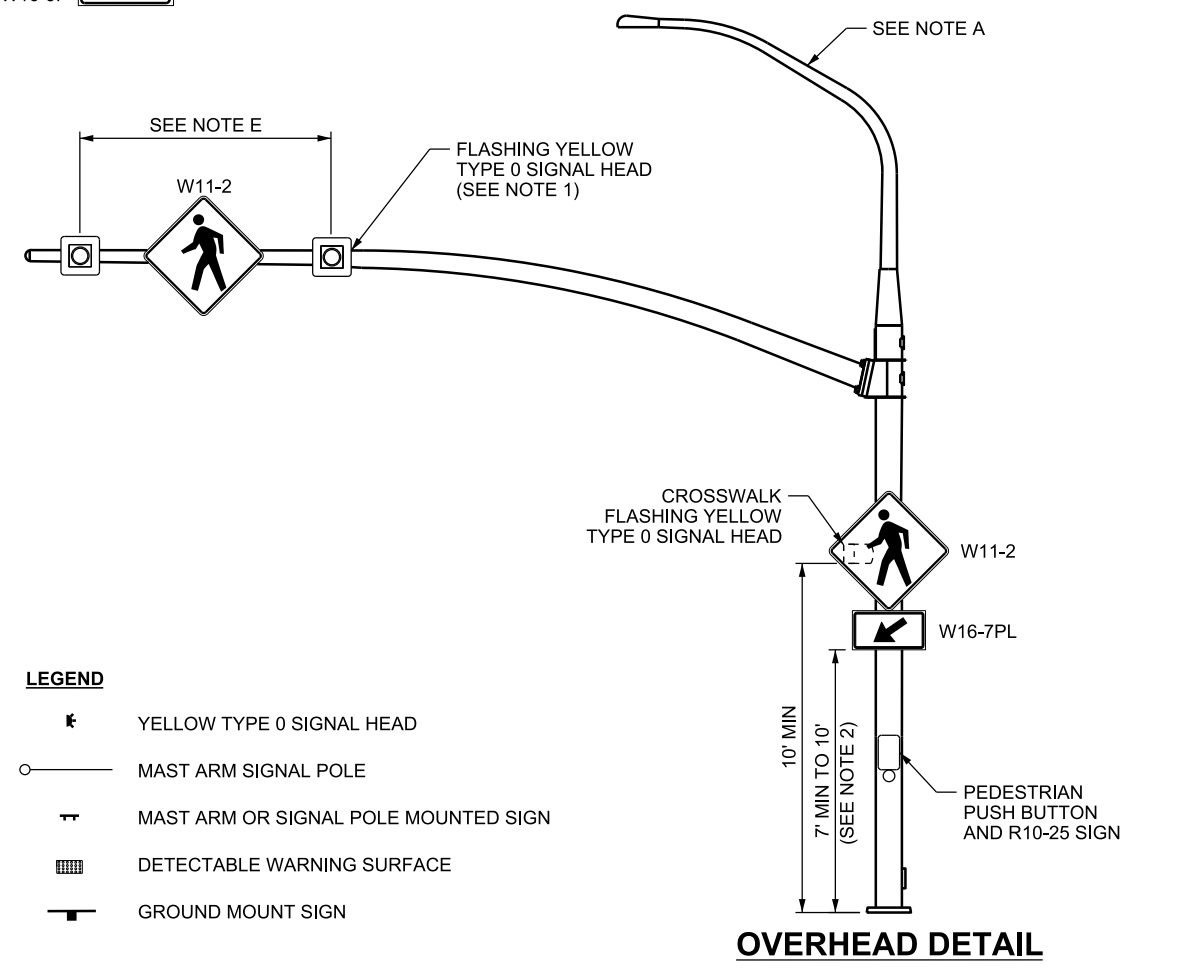
- DO NOT PLACE RETROREFLECTIVE TAPE ON TYPE 0 SIGNAL HEAD BACKPLATES.
- INCREASE MOUNTING HEIGHT OF W11-2 SIGN AND W16-7PL PLAQUE IF BLOCKED BY OTHER SIGNS OR OBSTRUCTIONS.

DESIGN-ONLY NOTES:

- INSTALL STREET LIGHTING UNLESS DIRECTED OTHERWISE BY REGION TRAFFIC OPERATIONS ENGINEER.
- USE SPECIAL EMPHASIS CROSSWALK MARKINGS WHEN REQUIRED BY REGION TRAFFIC OPERATIONS ENGINEER. SEE STD DWG ST 7.
- PLACE YIELD LINE 4 FT FROM CROSSWALK AT INTERSECTIONS ON SINGLE-LANE APPROACHES OR 50 FT FOR MULTI-LANE APPROACHES. USE "YIELD HERE TO PEDESTRIANS" R1-5 SIGN FOR MULTI-LANE APPROACHES.
- REFER TO UTAH MUTCD PART 7 FOR REQUIREMENTS AT SCHOOL CROSSINGS.
- PROVIDE A TYPE 0 SIGNAL HEAD CENTERED OVER EACH THRU LANE, FOR MULTIPLE THRU LANE APPROACHES. PROVIDE W11-2 SIGN CENTERED BETWEEN ALL TYPE 0 SIGNAL HEADS.
CENTER W11-2 SIGN IN THE THRU LANE AND PROVIDE TWO TYPE 0 SIGNAL HEADS SPACED AT LEAST 8 FT APART, FOR SINGLE THRU LANE APPROACHES.
- DO NOT INSTALL FLASHING BEACON CROSSWALK ON ROADWAYS WITH SPEEDS GREATER THAN 45 MPH UNLESS DIRECTED BY REGION TRAFFIC OPERATIONS ENGINEER. SEE STD DWG DD 18.
- PLACE FLASHING BEACON ASSEMBLIES ON A SINGLE OR TWO SEPARATE MAST ARMS.
- DO NOT INSTALL FLASHING BEACON CROSSWALK IN A REDUCED SPEED SCHOOL ZONE.
- A MULTI-LANE APPROACH HAS TWO OR MORE LANES MOVING TOWARD THE INTERSECTION, INCLUDING TURNING LANES.
- PLACE "NO PARKING" SIGNS TO PROHIBIT PARKING 50 FT BEFORE CROSSWALK. NO ACCESSES ARE ALLOWED IN THIS AREA.

LEGEND

- ☐ YELLOW TYPE 0 SIGNAL HEAD
- MAST ARM SIGNAL POLE
- MAST ARM OR SIGNAL POLE MOUNTED SIGN
- ▨ DETECTABLE WARNING SURFACE
- GROUND MOUNT SIGN



REVISIONS

NO.	DATE	APPR.	REMARKS
1	2/22/18	JS	UPDATED CALLOUTS, NOTES AND GRAPHICS.

UTAH DEPARTMENT OF TRANSPORTATION
STANDARD DRAWINGS FOR ROAD AND BRIDGE CONSTRUCTION
SALT LAKE CITY, UTAH

RECOMMENDED FOR APPROVAL
[Signature]
CHAIRMAN STANDARDS COMMITTEE
APPROVED

DEPUTY DIRECTOR

DATE: FEB. 22 2018

OVERHEAD FLASHING BEACON AT AN INTERSECTION CROSSWALK

STANDARD DRAWING TITLE

STD. DWG. NO. **SL 6D**

SUPPLEMENTAL DRAWING