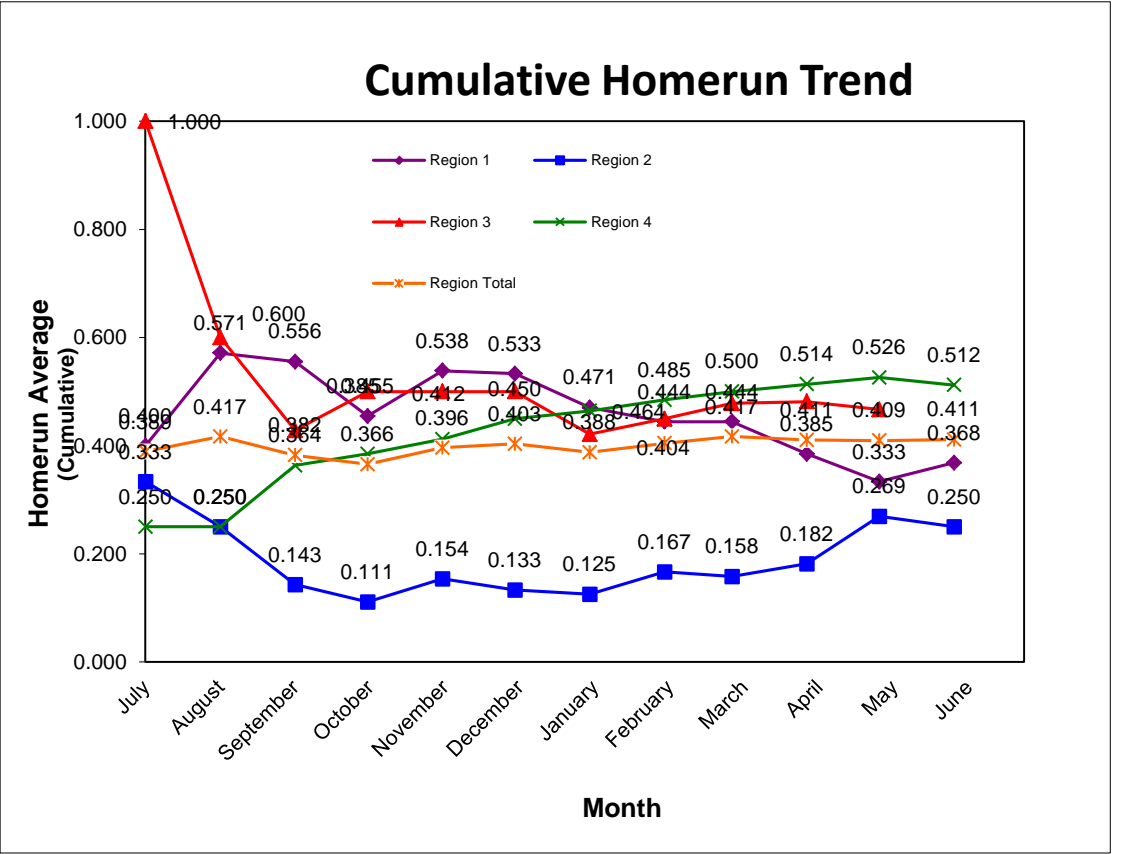
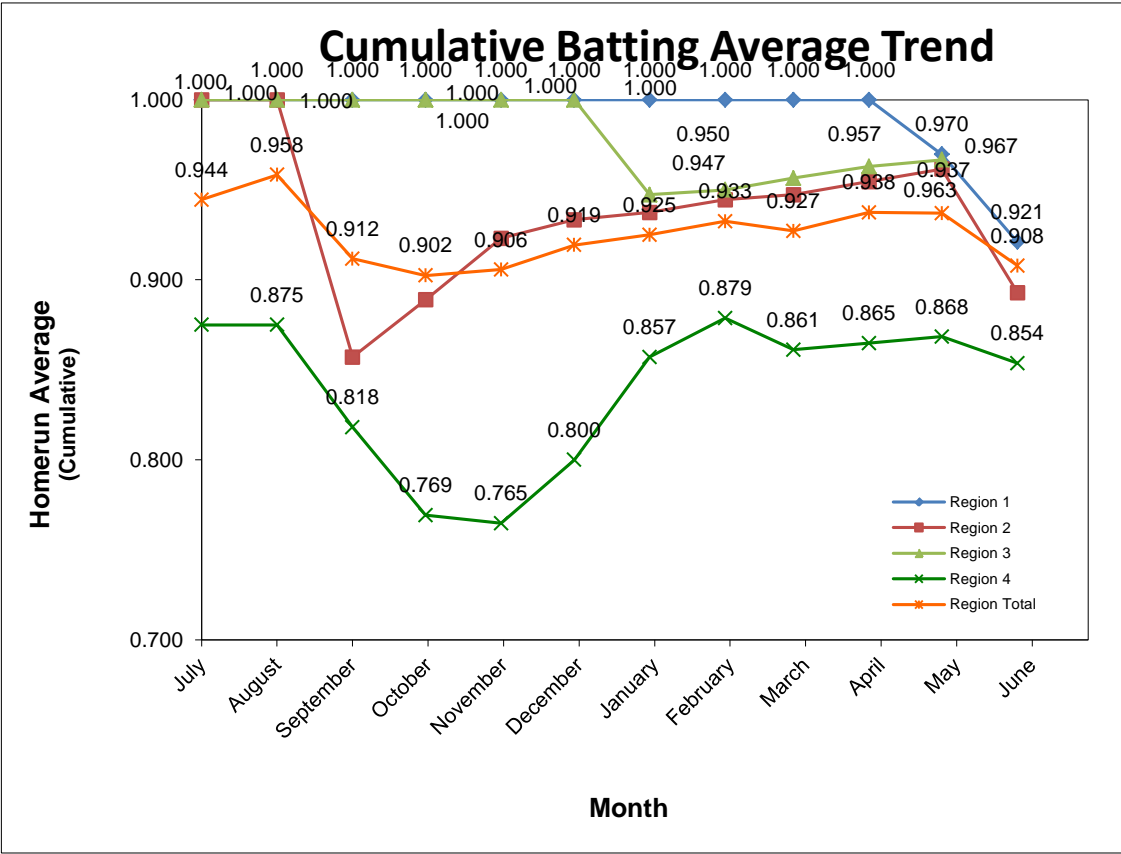


**FY 2014 Batting Average**

Region	Number of Projects	Number of Projects Over 110% of Engineer's Estimate <sub>1</sub>	Batting Average <sub>2</sub>	Number of Homeruns	Homerun Average <sub>3</sub>
Region 1	38	3	.921	14	.368
In-House	17	1	.941	7	.412
Consultant	21	2	.905	7	.333
Region 2	28	3	.893	7	.250
In-House	15	1	.933	4	.267
Consultant	13	2	.846	3	.231
Region 3	34	1	.971	16	.471
In-House	14	0	1.000	8	.571
Consultant	20	1	.950	8	.400
Region 4	41	6	.854	21	.512
In-House	12	1	.917	7	.583
Consultant	29	5	.828	14	.483
<b>Region Totals</b>	<b>141</b>	<b>13</b>	<b>.908</b>	<b>58</b>	<b>.411</b>
Statewide Projects	3	1	.667	1	.333
Emergency Projects	1	0	1.000	1	1.000



1. Represents the number of projects where the low bid is greater than 110% of the Engineer's Estimate (from PDBS), meaning that (low bid / Engineer's Estimate) > 110%.  
 2. The batting average is the number of hits over the number of projects. A hit is earned if the low bid on the project is less than 110% of the Engineer's Estimate.  
 3. The homerun average is the number of homeruns over the number of projects. A homerun is earned if the low bid on the project is within 10% of the Engineer's Estimate.