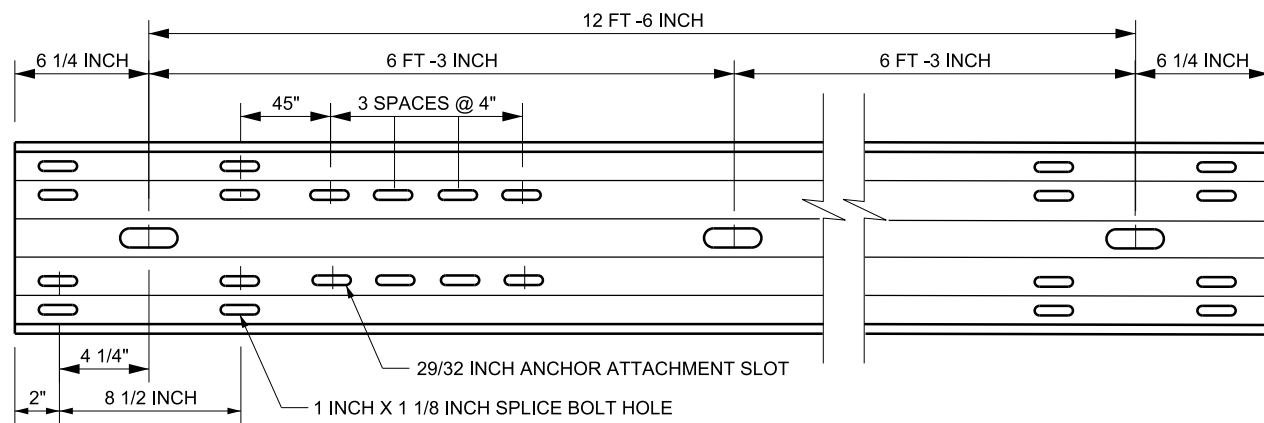
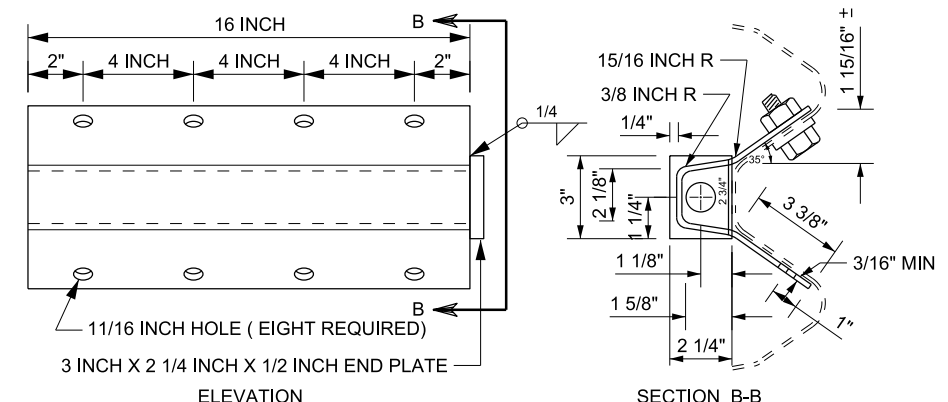


18-SEP-2013 D:\N\_Files\Standard\Drawings\Imp\ra1\2012\approved\Supplemental\Issues\SuppApproved\BA04C1.dgn

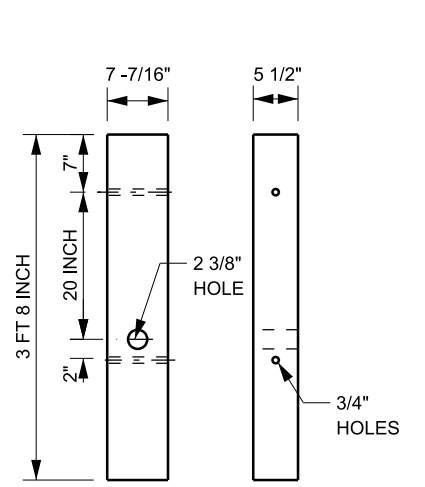


**RAIL ELEMENT (RWM14A)**

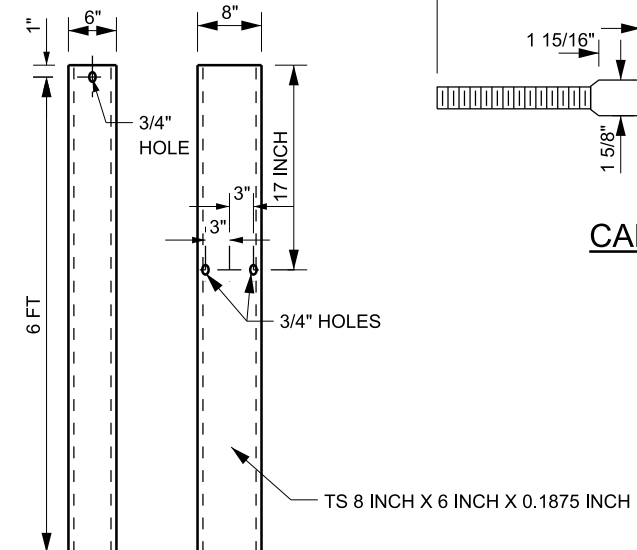
SEE NOTE 3



**ANCHOR BRACKET (FPA01)**

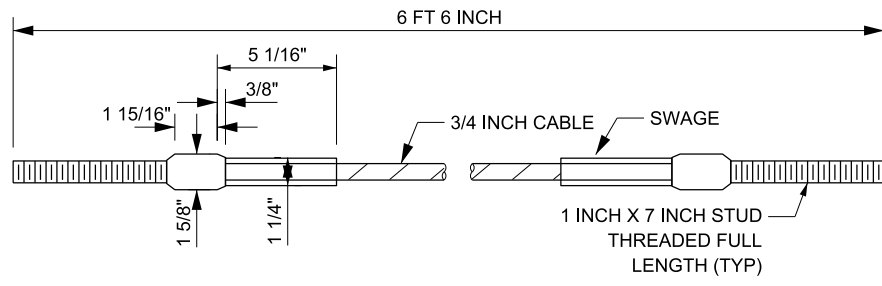


**WOOD BREAKAWAY POST**

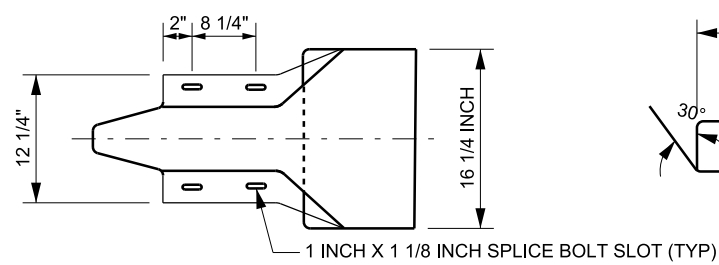


**FOUNDATION TUBE (PTE05)**

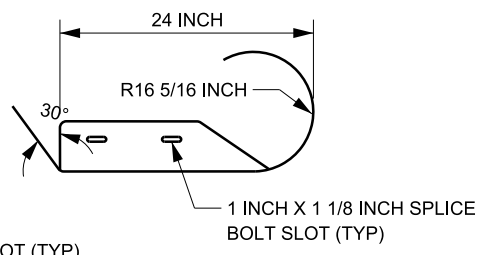
SEE NOTE 3



**CABLE ANCHOR ASSEMBLY (FCA01)**

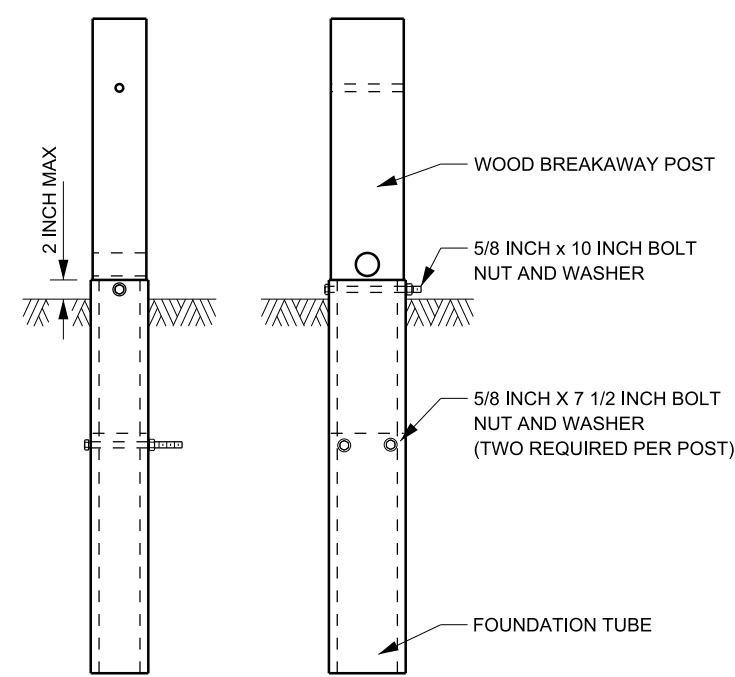


**END SECTION (ROUNDED)(RWE03A)**

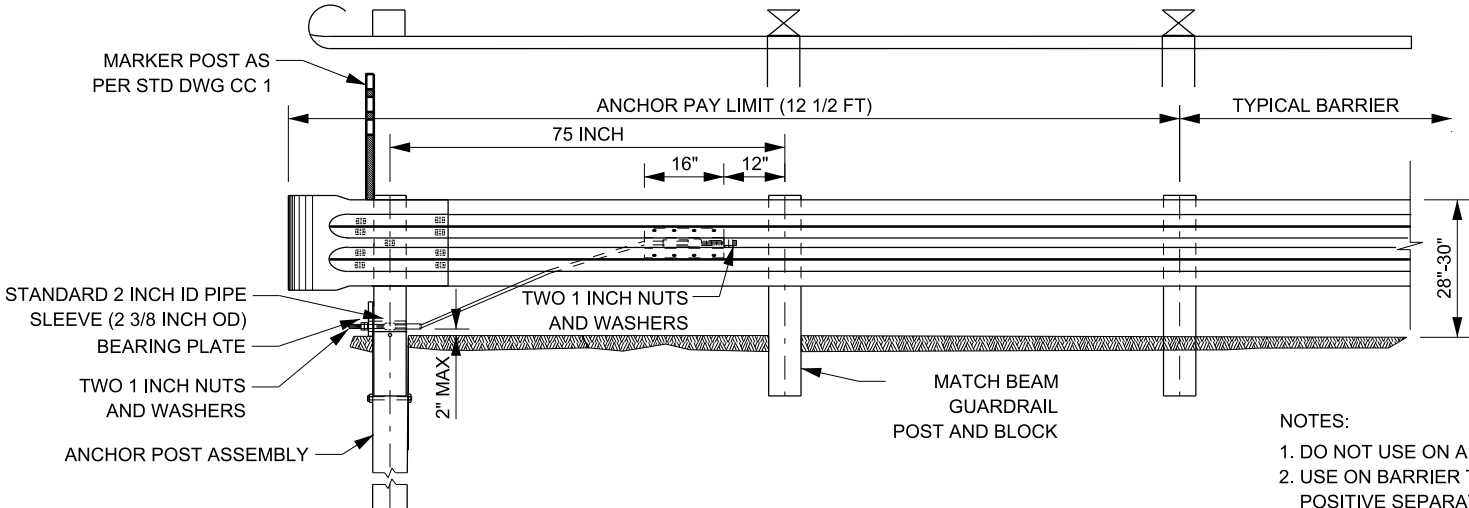


**BEARING PLATE (FPB01)**

NOTE:  
INSTALL BEARING PLATE WITH 5 INCH PORTION UP. SECURE PLATE TO POST USING TWO NAILS AT TOP OF PLATE.



**ANCHOR POST ASSEMBLY**



**W-BEAM ANCHOR INSTALLATION**

- NOTES:
- DO NOT USE ON APPROACH END.
  - USE ON BARRIER TRAILING END ON DIVIDED ROADWAYS WITH A POSITIVE SEPARATION OR MEDIAN WIDTH GREATER THAN OR EQUAL TO 36 FT MEASURED FROM EDGE OF TRAVEL LANE TO EDGE OF TRAVEL LANE WHEN BARRIER END IS OUTSIDE THE MAXIMUM REQUIRED CLEAR ZONE AS DEFINED IN STD DWG DD 18 AND THE AASHTO ROADSIDE DESIGN GUIDE, CURRENT EDITION.
  - MANUFACTURE ACCORDING TO AASHTO GUIDE TO STANDARDIZED HIGHWAY BARRIER HARDWARE. NUMBER IN PARENTHESIS IS GUIDE REFERENCE NUMBER.
  - MEET STANDARD SPECIFICATION 02841 STEEL AND GALVANIZING REQUIREMENTS.

**SUPPLEMENTAL DRAWING**

| REVISIONS |           | NO. | DATE             | APPR. | REMARKS |
|-----------|-----------|-----|------------------|-------|---------|
| 1         | 8/29/2013 | SDD | MODIFIED NOTE 2. |       |         |

**UTAH DEPARTMENT OF TRANSPORTATION**  
STANDARD DRAWINGS FOR ROAD AND BRIDGE CONSTRUCTION  
SALT LAKE CITY, UTAH

RECOMMENDED FOR APPROVAL  
*[Signature]*  
CHAIRMAN STANDARDS COMMITTEE

DATE: AUG 29, 2013  
DATE: AUG 29, 2013

DEPUTY DIRECTOR

**W-BEAM GUARDRAIL ANCHOR TYPE 1**

STANDARD DRAWING TITLE

STD. DWG. NO. BA 4C1