

APPENDIX 3B

Mountain View Vision Voluntary Agreement



Mountain View Vision

Voluntary Agreement

The Mountain View Vision was collaboratively created by representatives from jurisdictions in the area, other stakeholders, and the broader public. Given the emergence of this consensus land use & transportation vision for the Mountain View area, We, the jurisdictions in the Mountain View Area, as represented in the Growth Choices Stakeholder Committee, support implementation of The Mountain View Vision to coordinate the activities, policies, and investments of state, regional, and local governments.

We agree that the Mountain View Vision will provide a flexible and dynamic framework for local decisions on growth and development which in turn support improved mobility and the transportation preferences delineated in the Vision Map. We agree that it is appropriate for local jurisdictions to apply the Mountain View Corridor Vision as each sees fit. Even while working towards common goals, jurisdictions will retain local control of general plans and zoning of land within their boundary. General plans will translate the Vision into specific goals, policies and programs and provide implementation strategies.

We agree that the Vision is a dynamic document. We may reconvene to consider important new information from the Mountain View Corridor Environment Impact Statement (EIS) to modify the Mountain View Vision.



PRINCIPLES OF AGREEMENT

We agree to the following Principles:

1. Teamwork toward a common vision

We value a coordinated effort by local, regional, state and other regulating entities based on the values and well-being of the Mountain View area. We acknowledge that individual, uncoordinated efforts are less likely to achieve the goals outlined in the Mountain View Vision. We therefore agree to work as a coordinated team to implement and benefit from the Mountain View Vision. The Mountain View Vision will act as a guide for future land use and transportation planning and coordination among voluntarily participating jurisdictions.

2. Pedestrian-oriented, mixed use centers and corridors

We agree to undertake a local plan to implement new or expanded mixed-use centers and corridors as delineated on the Vision Map; when practical given the timing of EIS decisions and the timing of jurisdictional plan updates. Mixed-use centers, known as village centers and town centers, and mixed-use corridors, also known as main streets, are integral to the vision by providing transportation mobility benefits and by helping to support the transportation elements delineated in the Vision Map. The exact location and design of mixed-use centers and corridors will be developed in later planning functions led by local governments.

Elements of Pedestrian-Oriented Mixed Use Centers and Corridors

To further support anticipated long-term transportation mobility benefits including a reduction in traffic congestion (delay), and an increase in the number of trips from walking, bicycling, and public transportation use, We agree that local plans to implement mixed use centers and corridors will incorporate provisions for pedestrian orientation of future development and, when appropriate, transit orientation of development. Moreover, where streets do not currently exist, local plans will include provisions for interconnected street patterns or walking routes to enable ease of pedestrian movement.

3. Housing Choices

We agree that the mixed use centers and corridors delineated in the Vision Map will incorporate a variety of housing types to provide housing choices for our workforce in close proximity to future jobs and public transportation opportunities. While the predominant housing type in the mixed use centers and corridors may be single family detached housing, we principally support a variety of housing types in these areas.

4. Balanced Transportation

We desire a balanced transportation system for our future that will involve more transportation choices. The phasing and implementation of transportation investments



over the next decade will affect the land use development patterns and therefore affect future travel needs and the availability and effectiveness of other viable transportation choices. The sequencing of transportation investments needs to be studied to recommend the most effective and cost efficient way to meet future travel needs, reduce the rate of growth of vehicle miles traveled, improve air quality through a better balance between auto, transit, walk and bike trips, and to recommend the best way to encourage the types of land uses throughout the corridor that will support these improvements.

The Mountain View Vision Map represents preferred transportation solutions for representatives of affected jurisdictions that sign this document.

We recommend that the north/south public transportation system be designed to preserve a right-of-way that would allow the system to evolve over time into a high capacity public transportation system.

5. Environment

The planning for adequate open space is important to the jurisdictions in the Mountain View Corridor. More intensive development opportunities in Mixed Use Centers, as delineated in the Vision Map, afford opportunities to preserve open space elsewhere in the Mountain View area. The Mountain View Corridor jurisdictions value protected open space and will work towards continued enhancement of additional open space needs through entitlement or purchase. Open space will be designed for the eventual population in the area. Protection of the stream corridors in the Mountain View Area will be planned for and encouraged.

6. The Mountain View Corridor Vision EIS Alternative

We desire that the land use elements of Mountain View Corridor Vision and the transportation elements that are within the purview of the Mountain View Corridor Environmental Impact Statement (EIS) be considered together as an alternative for consideration in the EIS process.

7. Support for Inclusion of Transportation Elements in future MAG and WFRC Long Range Plans

Some transportation elements of the Mountain View Vision may be beyond the scope of the transportation solutions that will be examined in the Mountain View Corridor EIS process. For these transportation elements, we support their inclusion in future Mountainlands A.O.G. and Wasatch Front Regional Council long range transportation plans.

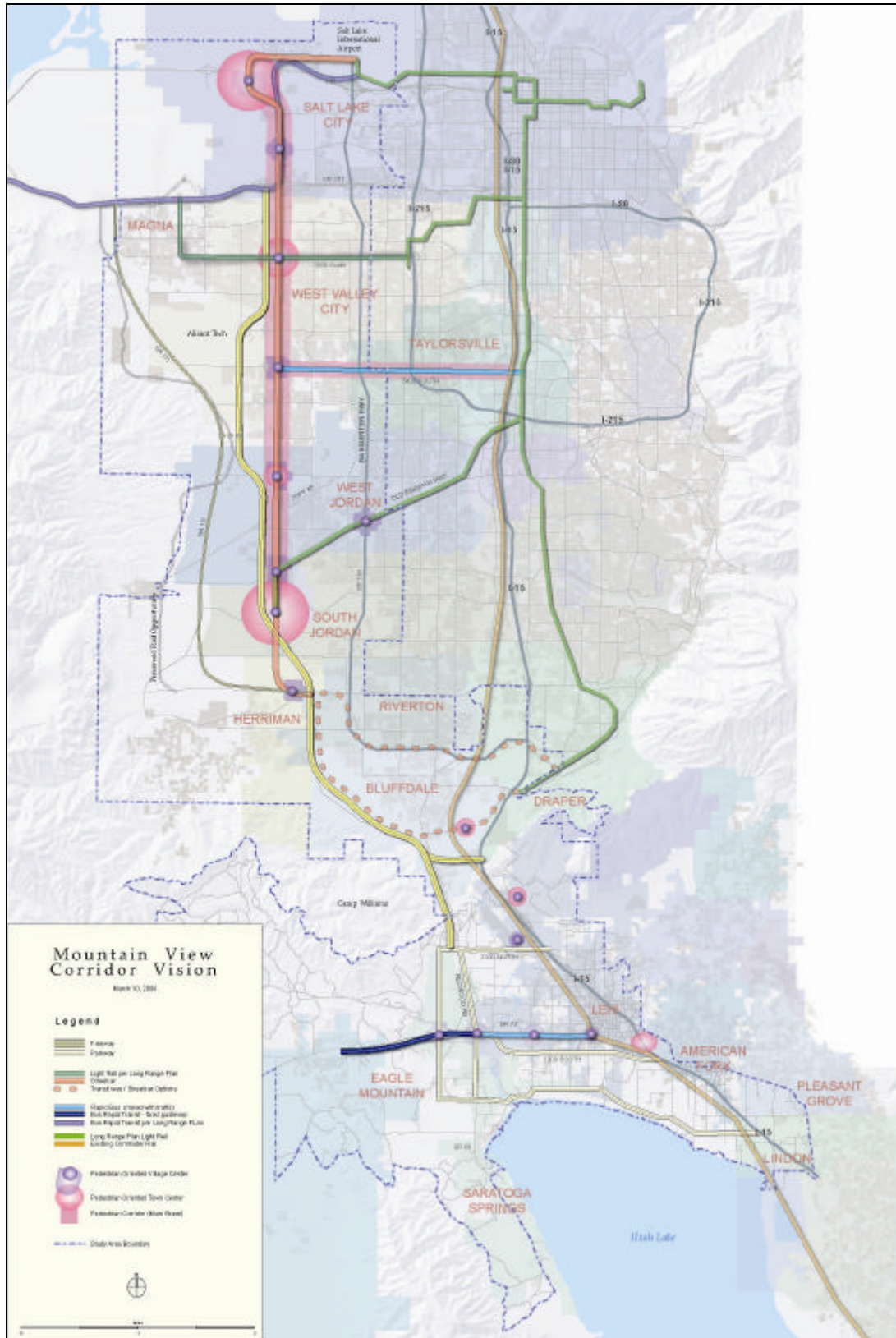


MOUNTAIN VIEW VISION MAP

What the Map Is and Is Not

The Map delineates transportation preferences that are feasible, but may or may not represent the eventual transportation decisions from the Mountain View Corridor EIS. The EIS process incorporates additional technical and cost/benefit analysis which might alter the transportation elements in the Vision Map.

The Map delineates the approximate location and type of pedestrian-oriented mixed use centers endorsed by the signatories of the Vision. The actual location, size, land uses, and densities that are implemented by individual jurisdictions may vary from the map.





LOCAL APPROVAL

We support completion of local resolutions to approve the Mountain View Vision in each signatory's jurisdiction within the following 9 months. Through passage of a resolution, the jurisdiction will approve the Mountain View Vision and will intend to implement its provisions in good faith.

AGREEMENT

Signatories

By signing this agreement, I support the Mountain View Corridor Vision as contained in this document. I agree to take the Mountain View Vision to my jurisdiction for appropriate consideration.

Herriman Name Title

Lehi Name Title

Salt Lake City Name Title

Saratoga Springs Name Title

South Jordan Name Title

West Jordan Name Title

West Valley City Name Title

Name Title

Name Title



ENDORSERS

By signing, I support the work of the Stakeholder Committee as contained in the Mountain View Vision.

| | |
|------------------------------------|-------------|
| Name _____ | Title _____ |
| Jurisdiction or Organization _____ | |
| Name _____ | Title _____ |
| Jurisdiction or Organization _____ | |
| Name _____ | Title _____ |
| Jurisdiction or Organization _____ | |
| Name _____ | Title _____ |
| Jurisdiction or Organization _____ | |
| Name _____ | Title _____ |
| Jurisdiction or Organization _____ | |
| Name _____ | Title _____ |
| Jurisdiction or Organization _____ | |
| Name _____ | Title _____ |
| Jurisdiction or Organization _____ | |



LOCAL APPROVAL

We support completion of local resolutions to approve the Mountain View Vision in each signatory's jurisdiction within the following 9 months. Through passage of a resolution, the jurisdiction will approve the Mountain View Vision and will intend to implement its provisions in good faith.

AGREEMENT

Signatories

By signing this agreement, I support the Mountain View Corridor Vision as contained in this document. I agree to take the Mountain View Vision to my jurisdiction for appropriate consideration.

[Signature]
Name

Herrington

[Signature]
Title

[Signature]
Name

Lehi

[Signature]
Title

[Signature]
Name

Salt Lake City

3/10/04

[Signature]
Title

[Signature]
Name

Saratoga Springs

[Signature]
Title

[Signature]
Name

South Jordan

[Signature]
Title

[Signature]
Name

West Jordan

[Signature]
Title

[Signature]
Name

West Valley City

[Signature]
Title

[Signature]
Name

BLUFFDOLE

[Signature]
Title

[Signature]
Name

East Mountain City

[Signature]
Title



ENDORSERS

By signing, I support the work of the Stakeholder Committee as contained in the Mountain View Vision.

Name Br
Jurisdiction or Organization _____

Title _____

Name [Signature]
Jurisdiction or Organization T.H. & W.

Title Exec Dir.

Name [Signature] R. Clark
Jurisdiction or Organization Emerson Utah

Title Vice Chair

Name [Signature]
Jurisdiction or Organization UTAH TRANSIT AUTHORITY

Title GENERAL MANAGER

Name Susan M Schelling
Jurisdiction or Organization Southwest Valley Chamber

Title Exec. Officer

Name [Signature]
Jurisdiction or Organization Kennewick Land

Title _____

Name [Signature]
Jurisdiction or Organization JORDAN School District

Title SYNCF ASST. AUXILIARY SERVICES



ENDORSERS

By signing, I support the work of the Stakeholder Committee as contained in the Mountain View Vision.

Name Thomas P. Rowel
Jurisdiction or Organization Salt Lake County

Title Principal Planner

Name [Signature]
Jurisdiction or Organization FUTURE MOVES COALITION

Title CHAIR

Name [Signature]
Jurisdiction or Organization SALT LAKE CITY

Title Sp. Advisor to the Mayor

Name Robert J. [Signature]
Jurisdiction or Organization Citizen

Title _____

Name Jean Smeun
Jurisdiction or Organization ROSECREST / SOUTHEAST

Title PRESIDENT

Name Nina Dreyfusky
Jurisdiction or Organization Utah Chapter of Bioregional Club

Title Air Quality & Transportation Chair

Name _____
Jurisdiction or Organization _____

Title _____