

Project Overview

US-191; 400 NORTH TO SR-128 ROAD WIDENING

This project begins at 400 North and ends at SR-128. It will reconstruct the existing roadway to accommodate four lanes of traffic, two in each direction, with 6-foot shoulders. For most of the project, there will be a center turn lane. Where we cannot provide a center turn lane, there will be two lanes in each direction with a painted double yellow line separating traffic.

The project will also add curb, gutter, and sidewalk for a large portion of the project. In addition, UDOT will partner with Moab City to construct a Storm Water Waste System to address storm water from rain events starting at Stewart Canyon area, above Cermak Drive. The system will collect storm water from Stewart Canyon, US-191 and adjacent properties, depositing the water in a collection pond west of the intersection of 500 West and US-191.

We hope to have the design and re-evaluation of the environmental document completed by Fall 2018 so construction can begin early Winter 2019, with a completion of the project by the Fall of 2019.

PROJECT OVERVIEW

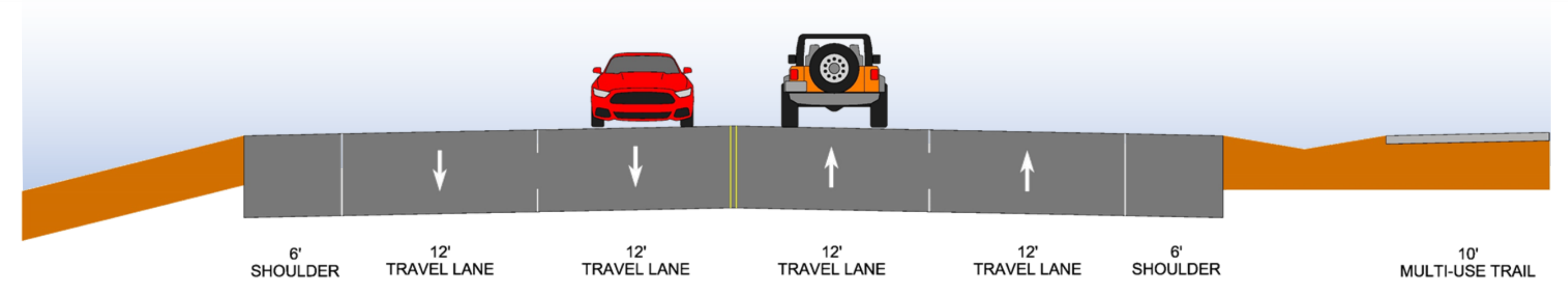
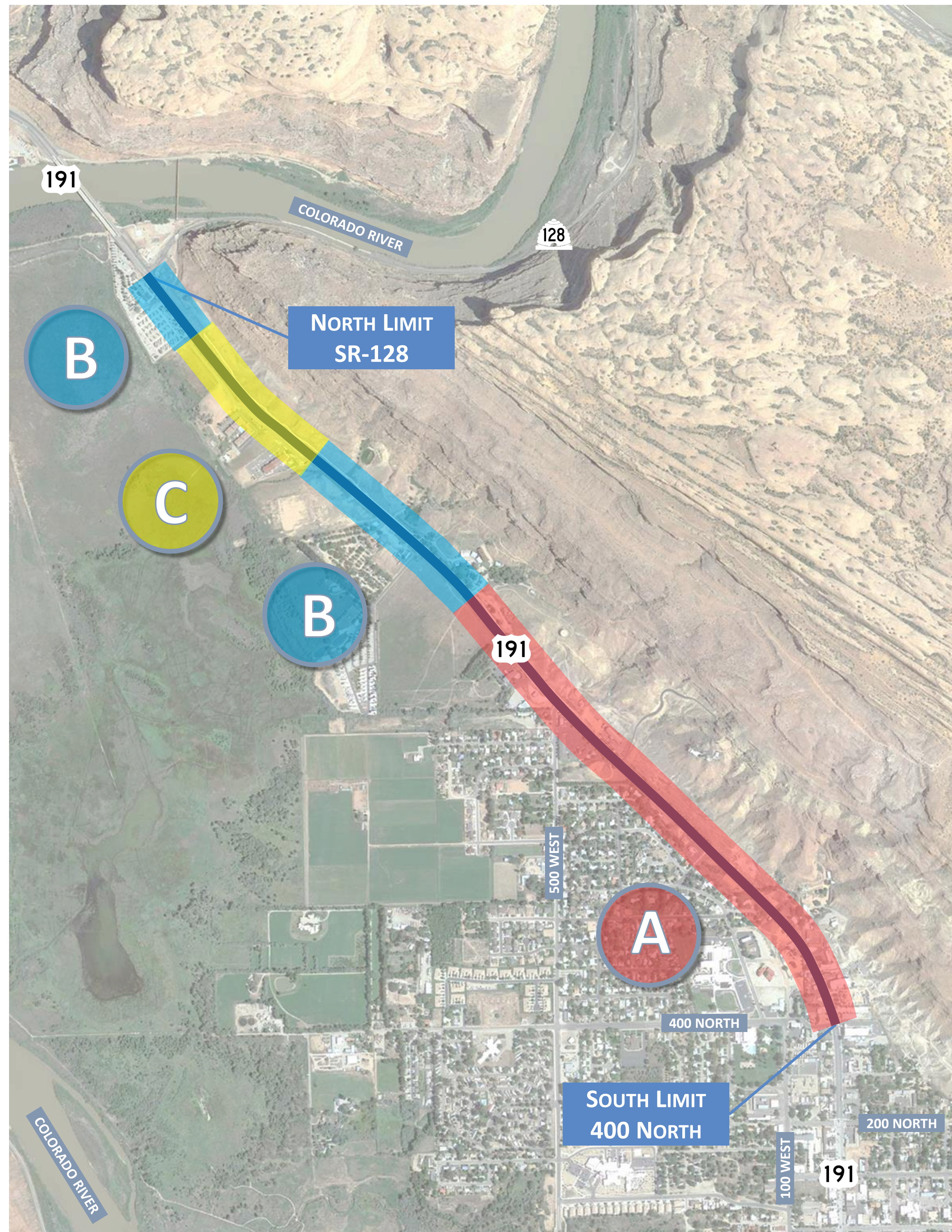
PROJECT LIMITS



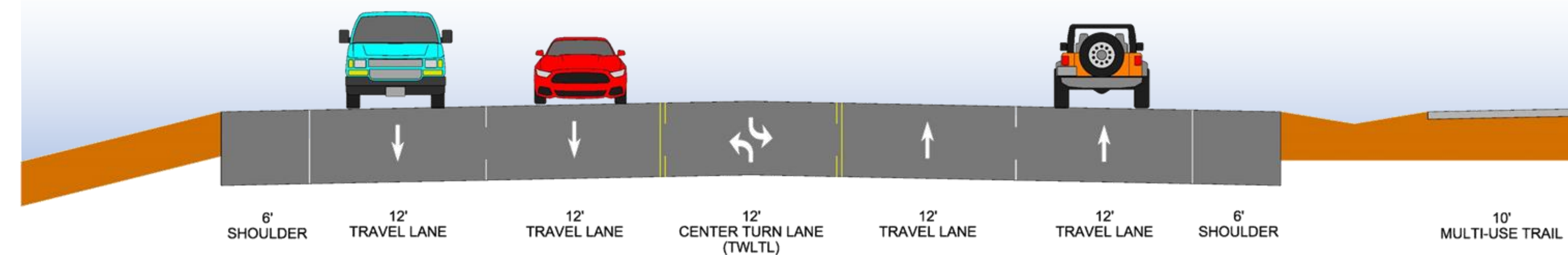
PROJECT GOALS

- Widen the existing roadway to accommodate four lanes of traffic, two in each direction, along with 6-foot shoulders.
- Where able, provide a center Two Way Left Turn Lane for left turns.
- Construct curb, gutter, and sidewalk for a large portion of the project.
- Construct a Storm Drainage System to convey storm water from Stewart Canyon, US-191 and adjacent properties, to a detention pond located west of the 500 West/US-191 intersection.

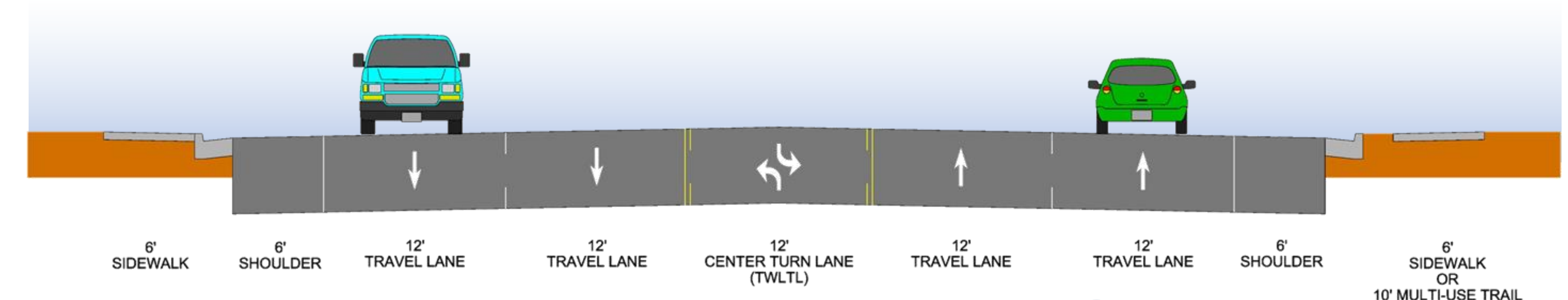
TYPICAL SECTIONS



TYPICAL SECTION



TYPICAL SECTION



TYPICAL SECTION



US-191; 400 NORTH TO SR-128 ROAD WIDENING - FREQUENTLY ASKED QUESTIONS

Q: Will there be on-street parking along US-191 within this project's limits, when construction is finished?

A: Not likely. The project goal is to provide a six-foot wide shoulder which does not allow sufficient room for on-street parking.

Q: Will customers be able to turn left into and out of my property during construction?

A: During Construction, access to businesses will be of utmost importance. However, there may be sometimes when left turns into a property may be limited or restricted. Right turns into an access may be limited for a short period of time, similar to what we have done on other projects in the area.

Q: Will customers be able to turn left into and out of my property after the Project is complete?

A: Yes. The Project will provide a two-way left turn median that allows turning from and into the median.

Q: Will my building be torn down or have the part facing US-191 moved back?

A: No.

Q: Will my property be flooded by run-off coming from the road?

A: The current design should minimize the likelihood of flooding from the road. The drainage system is being designed to address a 50-year flood event.

Q: Will the flooding and silt that is deposited on US-191 several times a year from Stewart Canyon Wash be addressed?

A: Yes, the drainage system is being designed to address a 50-year flood. A key component of this system includes a maintenance agreement from the city.

Q: What bicycle/pedestrian enhancements are being included in the project?

A: The current design provides a consistent shoulder through the project limits to accommodate bicyclists. Additionally, the design maintains the multi-use trail.

US-191; 400 NORTH TO SR-128 ROAD WIDENING - FREQUENTLY ASKED QUESTIONS

Q: Will the multi-use trail be accessible during construction?

A: During construction, the contractor will be required to provide passage for pedestrians and bicyclists through the project limits. However, there may be times that access to the multi-use trail may be restricted for short sections of the system.

Q: Will the existing multi-use trail be extended?

A: UDOT is consulting with the city on funding and design options. This decision has not been made at this point and may fall outside the scope of the current project.

Q: Will driveways or access to businesses be closed during construction?

A: The contractor will be required to maintain reasonable access to businesses at all times during construction.

Exception: There will be short periods of time when a closure will be unavoidable, such as when crews are crossing directly in front of a driveway or access during road excavation and paving operations. For these occasions the UDOT specification allows up to a thirty-minute closure during business hours, and a one-hour closure after business hours.

Q: What will be done to protect the Matheson Preserve, the Wetlands, and the water quality during construction?

A: UDOT does not yet have a formal plan in place. See the original Environmental Assessment Document for any required mitigation to date. This document is available to view during the Open House.

US-191; 400 NORTH TO SR-128 ROAD WIDENING - FREQUENTLY ASKED QUESTIONS

Q: How will you manage erosion control, and storm water runoff control?

A: UDOT does not yet have a formal plan in place. See the original Environmental Assessment Document for any required mitigation to date. This document is available to view during the Open House.

Q: Will construction noise upset wildlife in the preserve?

A: UDOT will use the mitigation measures required to minimize impacts to wildlife species.

Q: Will the road be closed during construction?

A: At least one travel lane in each direction will be maintained during construction, because we are still early in the design process, the construction specifications for the project are not yet written.

Q: What is the schedule?

A: UDOT is planning to receive bids in the fall of 2018. Construction could potentially begin during the winter of 2018/2019 with the bulk of construction anticipated to occur in 2019.

Q: Will there be special provisions for bicycle and pedestrian use during construction?

A: During construction, the contractor will be required to provide passage for pedestrians and bicyclists through the project limits.

Q: Will bike lanes be provided?

A: Striping to delineate a bike lane will not be provided, but the shoulder will allow for bicycle use.

US-191; 400 NORTH TO SR-128 ROAD WIDENING - FREQUENTLY ASKED QUESTIONS

Q: How can I submit comments?

A: You can connect to the project Geo-Targeting Form to leave comments and target specific project locations by going to <https://arcg.is/4mSyP> or by using the QR Code below.

Q: Will there be an opportunity to submit further comments?

A: Yes, there will be a public comment opportunity during the re-evaluation of the existing Environmental Assessment Document . Formal comments that fall within the scope of what we are looking at in the re-evaluation process will receive a response.

Q: Will construction take place during daytime or nighttime hours?

A: There are still unknowns at this stage in the design. We are interested in your comments about this.

Note 1: There are still unknowns at this point in time.

Note 2: Comments obtained at this open house will not receive a response but will be a resource for the design team.

Connect to the project Geo-Targeting Form to leave comments and target specific project locations using the QR Code below.

