

Logan 10th West

SR 252

CONSTRUCTION

10TH WEST / SR 252 TO HAVE LOCAL ACCESS ONLY BEGINNING JUNE 19, 2011

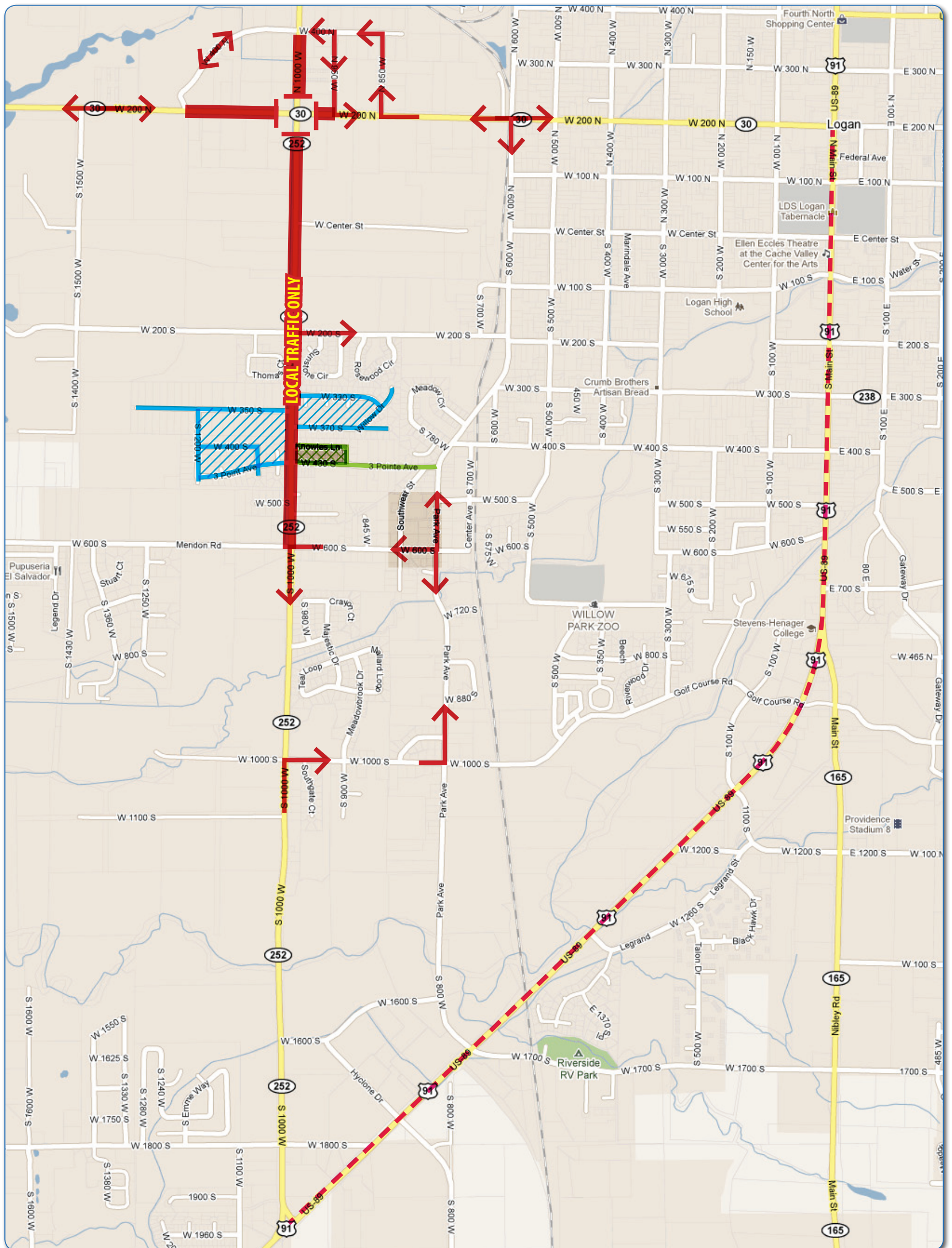
Beginning Sunday, June 19, 2011 and continuing for approximately 60 days, access to and from 10th West/SR 252 between 600 South and 400 North will be limited to local access only. This closure to thru-traffic is to allow Logan City to replace a failing sewer line that was recently discovered and was not part of the original project. This work will also allow for accelerated road work in this area.

Access to residences in this area will be from 10th West or other connecting side streets as shown in the map below. The new frontage road between 600 South and 200 South will also be available intermittently during its construction. All large trucks without a destination on 10th West and other thru-traffic should use Main Street / US-89/91 shown in the map below. Access to businesses on 10th West will remain open according to the access and routing information listed below and shown on the map.

LOCAL BUSINESSES ARE OPEN VIA THE FOLLOWING ACCESS

- **LW's Truck Stop:** Access from 200 North / SR-30 & 1000 West via posted detours
- **Businesses between 600 South and 200 North:** Access from 1000 West by northbound local traffic only; Single lane with flagger control
- **Businesses between 200 North and 400 North:** Access from 1000 West by southbound local traffic only; Single lane with flagger
- **Contact businesses directly for delivery routes.**

LW's Truck Stop	1-435-753-7461	Wheeler Implement	1-435-753-5505
Fur Breeders	1-435-752-5441	Valley Metals Recycling	1-435-752-0571
Building Specialties	1-435-792-4153	Codale	1-435-713-8200
Old Dominion Trucking	1-435-750-0297	Ferguson Plumbing	1-435-752-2832
Spindler Construction	1-435-753-0722	Peterson Plumbing	1-435-752-9580



Logan 10th West / SR 252 Traffic Control Map
Beginning June 19, 2011 for approximately 60 days

FOR MORE INFORMATION AND ASSISTANCE

- Visit the project web page at www.udot.utah.gov/tenthwest
- Follow the project on Twitter at: <http://twitter.com/tenthwest>
- Follow the project on Facebook at: www.facebook.com/tenthwest
- For weekly email project updates, send an e mail to: tenthwest@utah.gov
- For prompt on-site project assistance, call the Project Hotline at 1-888-427-8585

Local access to and from 1000 West

Local access to and from 600 West

Through truck traffic

