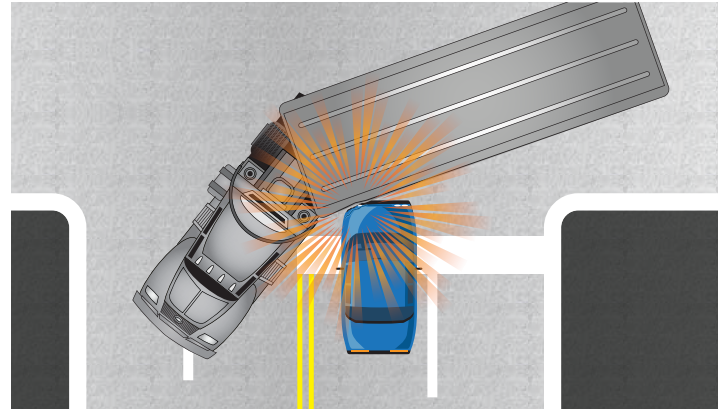
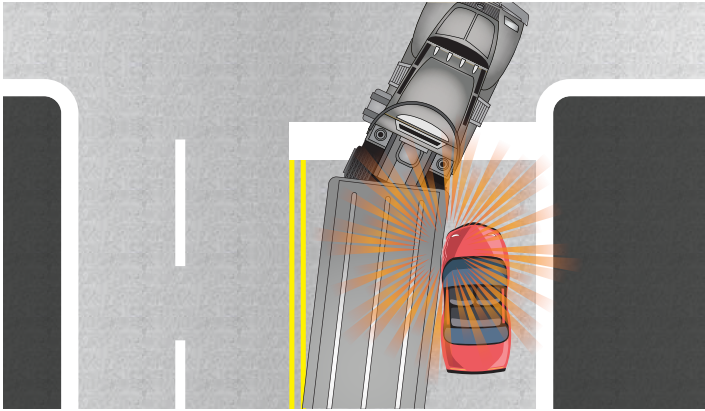




TRUCKS MAKE WIDE TURNS

Crowding a Semi Leads to Bad Results

A semi's height (up to 14'), length and weight make it nearly impossible for the driver to make tight turns like regular cars and trucks. A fully-loaded truck also has a much higher center of gravity than typical passenger vehicles and SUVs, making it easier for a truck to tip over. To avoid this situation, and to avoid driving over curbs and sidewalks, truck drivers usually move into adjacent lanes or swing wide prior to and after a turning maneuver.



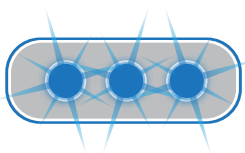
Sneaking Alongside can be Fatal

Don't try to sneak to the side and squeeze around trucks—it may be the last mistake you'll ever make.

Don't Crowd an Intersection

Many intersections are marked with stop lines, indicating where a driver must come to a complete stop. Crowding an intersection (stopping beyond the stop line or stop sign) leaves your vehicle exposed to semis and other vehicles attempting to turn.

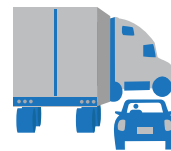
TIPS TO STAY SAFE



WATCH the truck's turning signal to see what the driver intends to do.



WAIT for the truck to make its turn first as the truck's turn signal may not be working.



DON'T CUT IN along the right side of a truck.



STAY BACK at least a car length when stopped behind a truck.

For further information on how to drive Truck Smart visit the following sites or email TruckSmart@utah.gov:

zero
Fatalities
ZeroFatalities.com

UTDOT
utah.gov
MOTOR CARRIER DIVISION
udot.utah.gov/trucksmart

UTAH TRUCKING
ASSOCIATION
UtahTrucking.com

Federal Motor Carrier
Safety Administration
fmcsa.dot.gov

COMMERCIAL VEHICLE SAFETY ALLIANCE
CVSA
cvsa.org