



CUTTING OFF A TRUCK IS A DEAD END

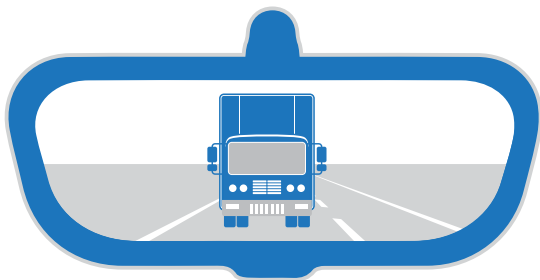
Maintain a Safe Driving Distance

It's okay to pass trucks of all types (including multiple trailer combinations). Remember to make sure you have extra time to get around these larger vehicles, regardless of the road you're on. Even on a level highway, it takes an extra three to five seconds to pass a truck than to pass a passenger vehicle.



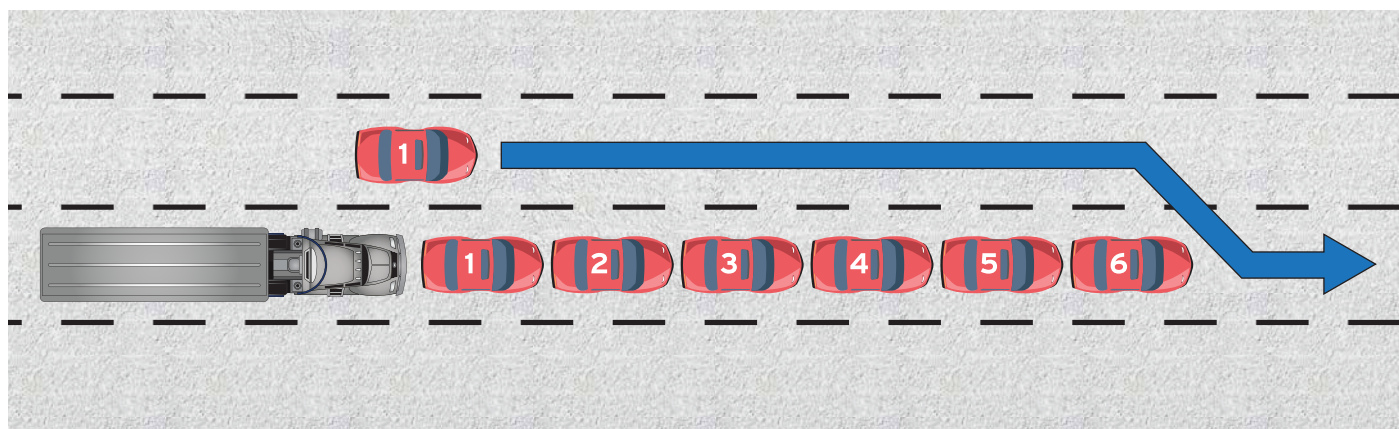
Once you pass a semi or bus and return to the right lane, do not slow down. Maintain your speed and make sure there is a safe space between the truck and your car. Trucks take longer to regain their speed after being slowed down and may slow the traffic behind them.

RULE OF THUMB



When passing, if you can see the entire front of the truck in your rear-view mirror, it's safe to merge over.

When passing a truck, allow one car length for every 10 miles per hour. For example, if you're traveling 60 mph, leave six car lengths between you and the front of the truck before merging back over.



For further information on how to drive Truck Smart visit the following sites or email TruckSmart@utah.gov:

zero
Fatalities
ZeroFatalities.com

UTDOT
utah.gov
MOTOR CARRIER DIVISION
udot.utah.gov/trucksmart

UTAH TRUCKING
ASSOCIATION
UtahTrucking.com

 Federal Motor Carrier
Safety Administration
fmcsa.dot.gov

 COMMERCIAL VEHICLE SAFETY ALLIANCE
cvsa.org