

West Davis Corridor EIS

Initial Participating Agency Meeting
February 17, 2010



WEST DAVIS
CORRIDOR

Purpose of Today's Meeting

11 AM to Noon (SAFETEA-LU Agencies)

Review and discuss:

- SAFETEA-LU and SAFETEA-LU coordination
- Agencies' and local governments' roles under SAFETEA-LU
- EIS milestone and review timelines

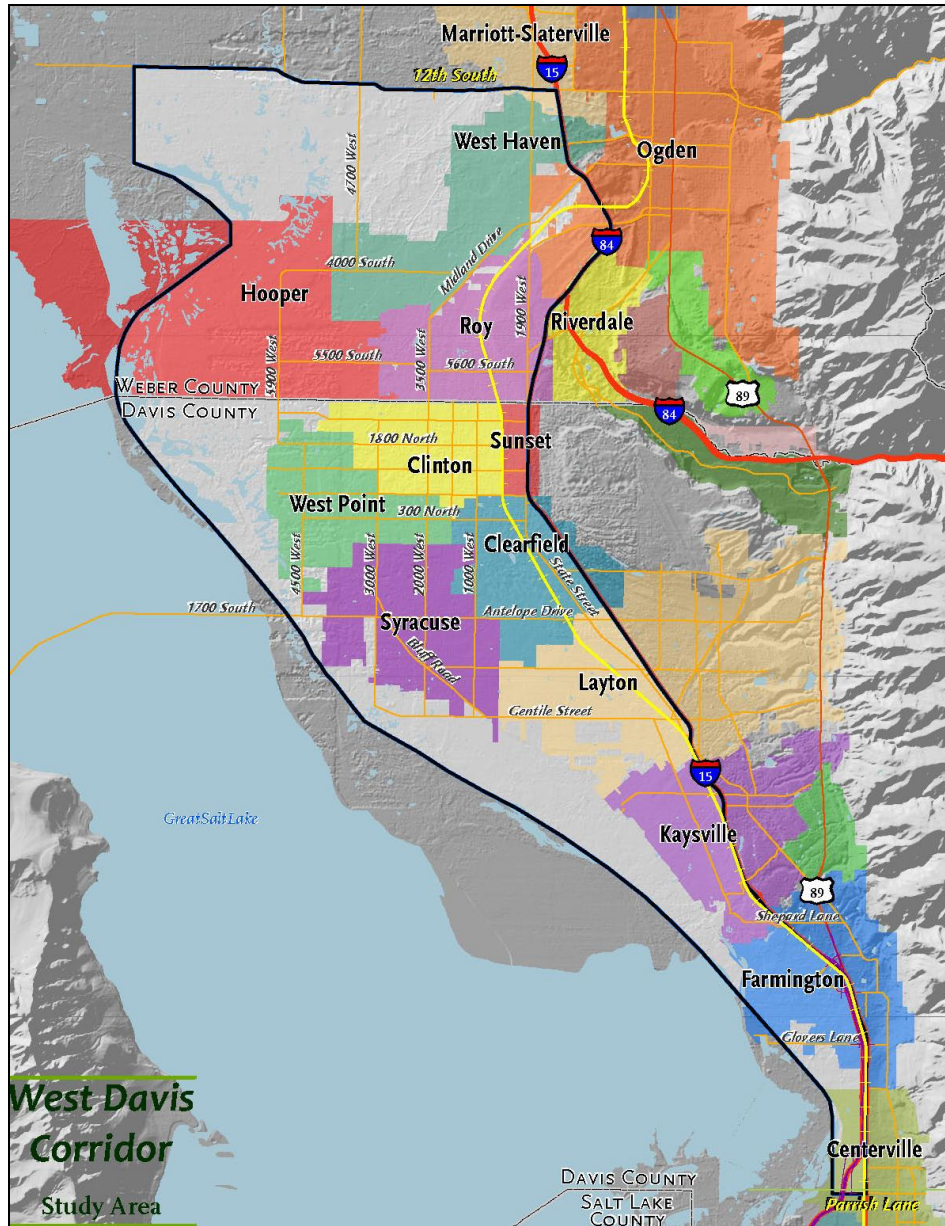
Noon to 1:30 PM (Agencies and Stakeholders)

To introduce the project and share information about the project and study area



Study Area

- Northern Boundary: 12th South (Marriott-Slaterville)
- Southern Boundary: Parrish Lane (Centerville)
- Eastern Boundary: I-15
- Western Boundary: Great Salt Lake



**West Davis
Corridor
Study Area**



**WEST DAVIS
CORRIDOR**

Corridor Studies and Regional Transportation Plan

- To date, the WDC has been examined in corridor studies and is included in the RTP

- A corridor study is the first **planning** document that is completed
 - “Big Picture”
 - Corridor study findings not “final”
 - WFRC might include a suggested corridors in the RTP if it determines that the project might be funded during the planning period

- If the transportation agency (UDOT) chooses to move forward with a project suggested by a corridor study and if that agency is seeking federal funding, *then* the proposal is further evaluated consistent with NEPA

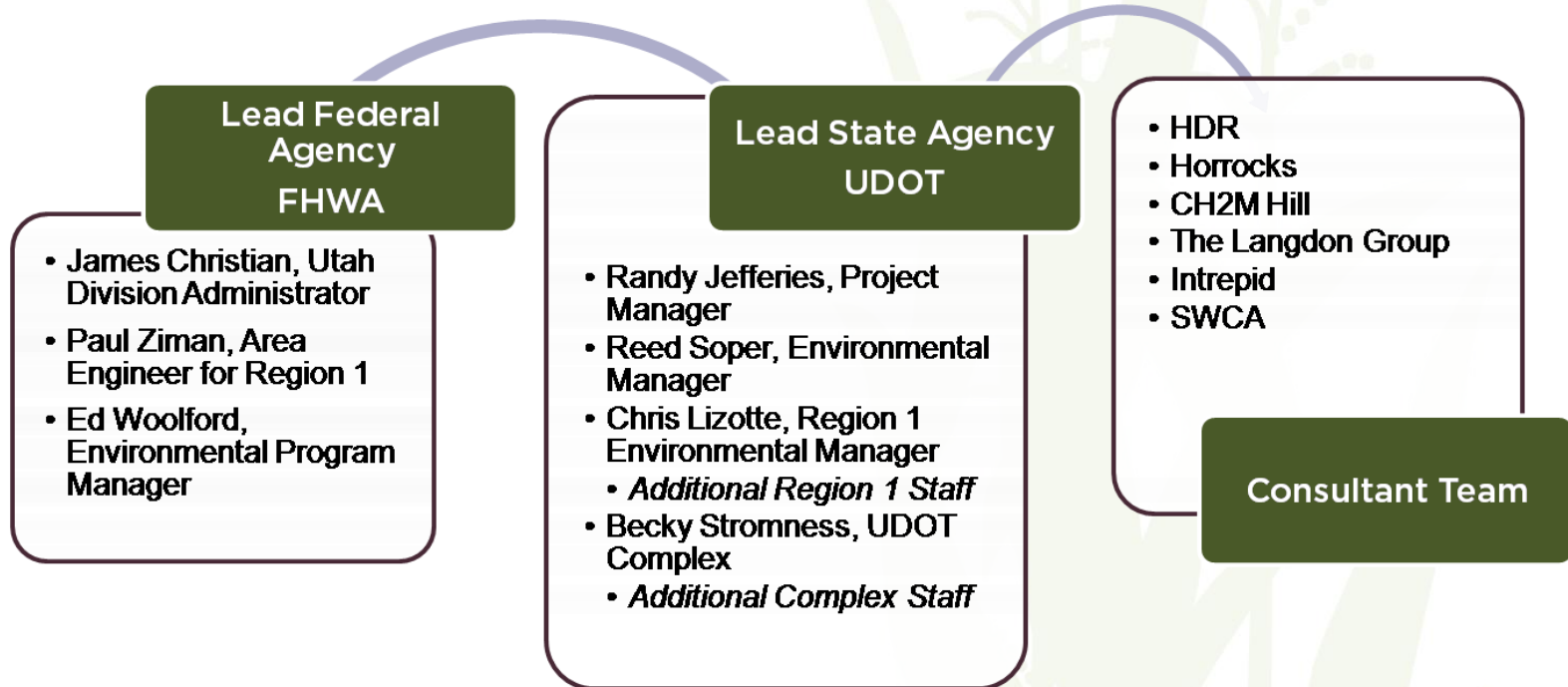


Why NEPA?

- National Environmental Policy Act
- Must be completed for all federal actions (e.g., funding, permits)
- WDC might need federal authorization through Section 404 Clean Water Act
- NEPA requires lead agencies to evaluate a reasonable range of alternatives even if they are different from what might have been presented in a corridor study



EIS Team Organization



SAFETEA-LU 6002 (Safe, Accountable, Flexible, Efficient Transportation Equity Act)

- A part of the “federal transportation funding bill”: SAFETEA-LU
- Section 6002 specifically addresses the NEPA process
 - Requires lead agencies (FHWA and UDOT) to identify and coordinate with other agencies, local governments, tribal representatives, and the public during the EIS process
- Section 6002 directs UDOT and FHWA to:
 - Identify and invite cooperating and participating agencies
 - Develop coordination plan
 - Develop coordinated schedule (contained in approved coordination plan)
 - Identify milestone-based opportunities for coordination (see page 12 of plan)



SAFETEA-LU 6002, Continued

▪ Cooperating Agencies

- Normally identified during NEPA process (not a new category)
- Agencies that have regulatory authority over the project (e.g., issue a permit) or manage land in the project area
- Close coordination regarding resource-specific methodologies, requirements for future permitting
- Listed on page 9-10 of Coordination Plan

▪ Participating Agencies

- New category under SAFETEA-LU
- Provides additional opportunities for other federal, state, and local agencies that have an interest in the project or project area to participate
- Work with team and other agencies throughout process
 - Provide feedback and comment
 - Provide supplemental information
- Cooperating agencies are always participating agencies
- Also on page 9-10 of Coordination Plan



SAFETEA-LU 6002, Continued

- Accepting the designation as a participating agency does *not*:
 - Indicate that an agency supports a project
 - Provide an agency with increased oversight or approval authority beyond its statutory limits

- The project team will seek input from the public and other interested parties (such as non-governmental organizations) concurrent with the participating and coordinating agency scoping process
 - Other stakeholders will be present after noon today



Participating Agency Expectations

- Participate in the NEPA process starting at the earliest possible time
 - Milestone-based meetings (development of the purpose and need, identification of a range of alternatives, and alternatives screening)
- Participate in the scoping process
 - All agencies and the public encouraged to provide input, not just participating agencies
- Identify, as early as practicable, any issues of concern regarding the project's potential environmental or socioeconomic impacts
 - Participating agencies can also participate in the issue resolution process
- Provide meaningful and timely input on unresolved issues



Expected Schedule

(see page 22 of Coordination Plan for detail)

- **January 2010:** NOI Published
- **February 2010:** Hold scoping meetings and collect scoping comments
- **May 2010:** review and finalize project purpose and need
- **May - September 2010:** identify action alternatives that will be studied in the EIS and develop screening criteria
- **Fall 2011:** complete draft EIS
- **Summer 2012:** complete final EIS
- **Winter 2012/2013:** sign and file ROD



Review Timeframes

Milestone	Targeted Review Time
Finalize purpose and need	<u>CA/PA</u> provide comments within 20 days of receipt
Finalize initial range of alternatives	<u>CA/PA</u> provide comments within 20 days of receipt
Finalize alternatives screening methods and criteria	<u>CA/PA</u> provide comments within 20 days of receipt
Complete Draft EIS (DEIS)	<u>CA/PA/public</u> provide comments on the DEIS within 45 days of Notice of Availability
Complete Final EIS (FEIS)	FHWA/UDOT complete FEIS within about 7 months of close of comment period on DEIS
Complete ROD	FHWA/UDOT complete ROD within 70 days of project approval

Note: all days listed above are **calendar** days.

