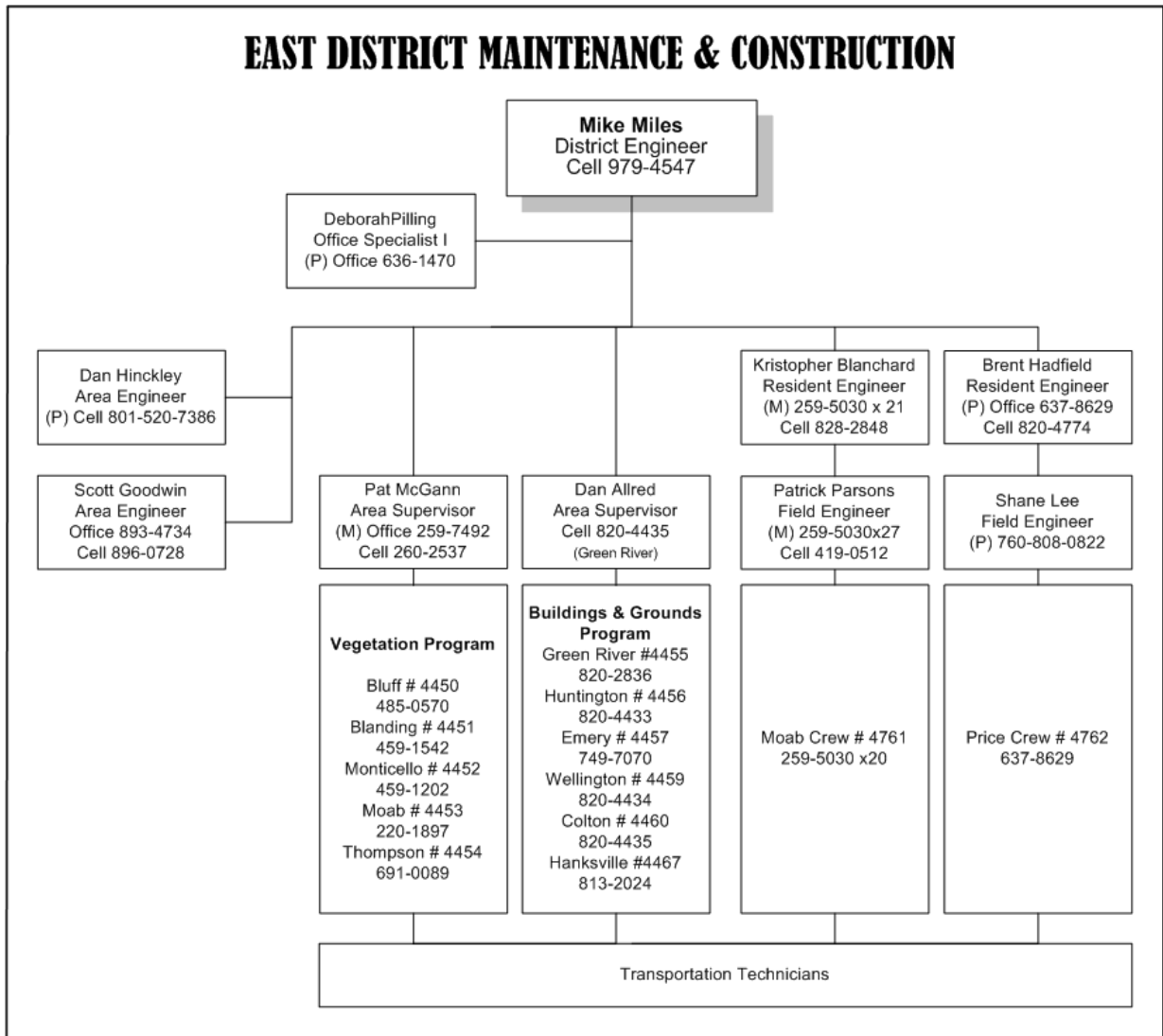
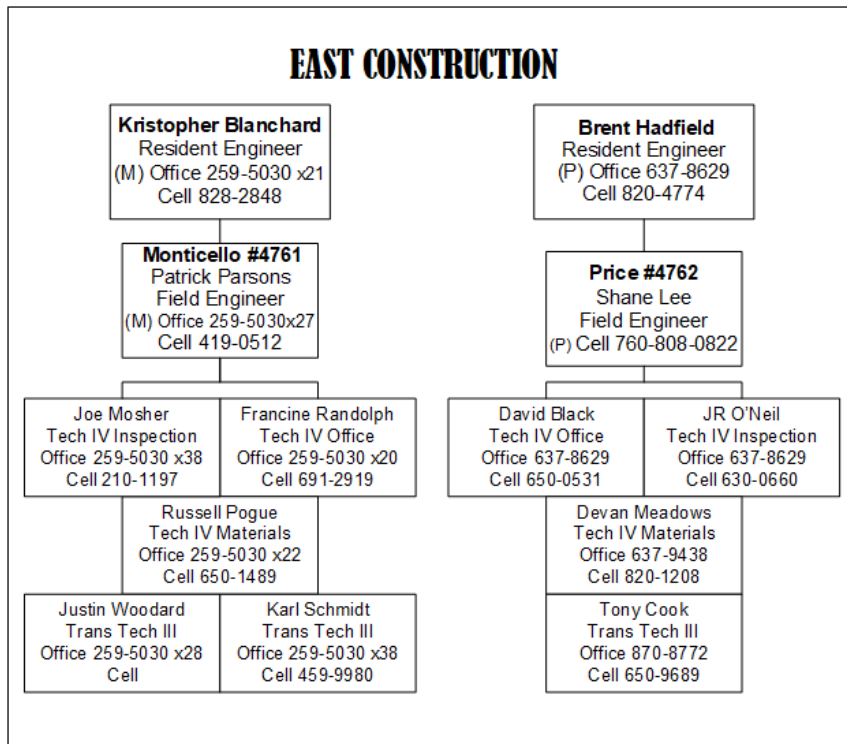


EAST DISTRICT MAINTENANCE & CONSTRUCTION



EAST CONSTRUCTION



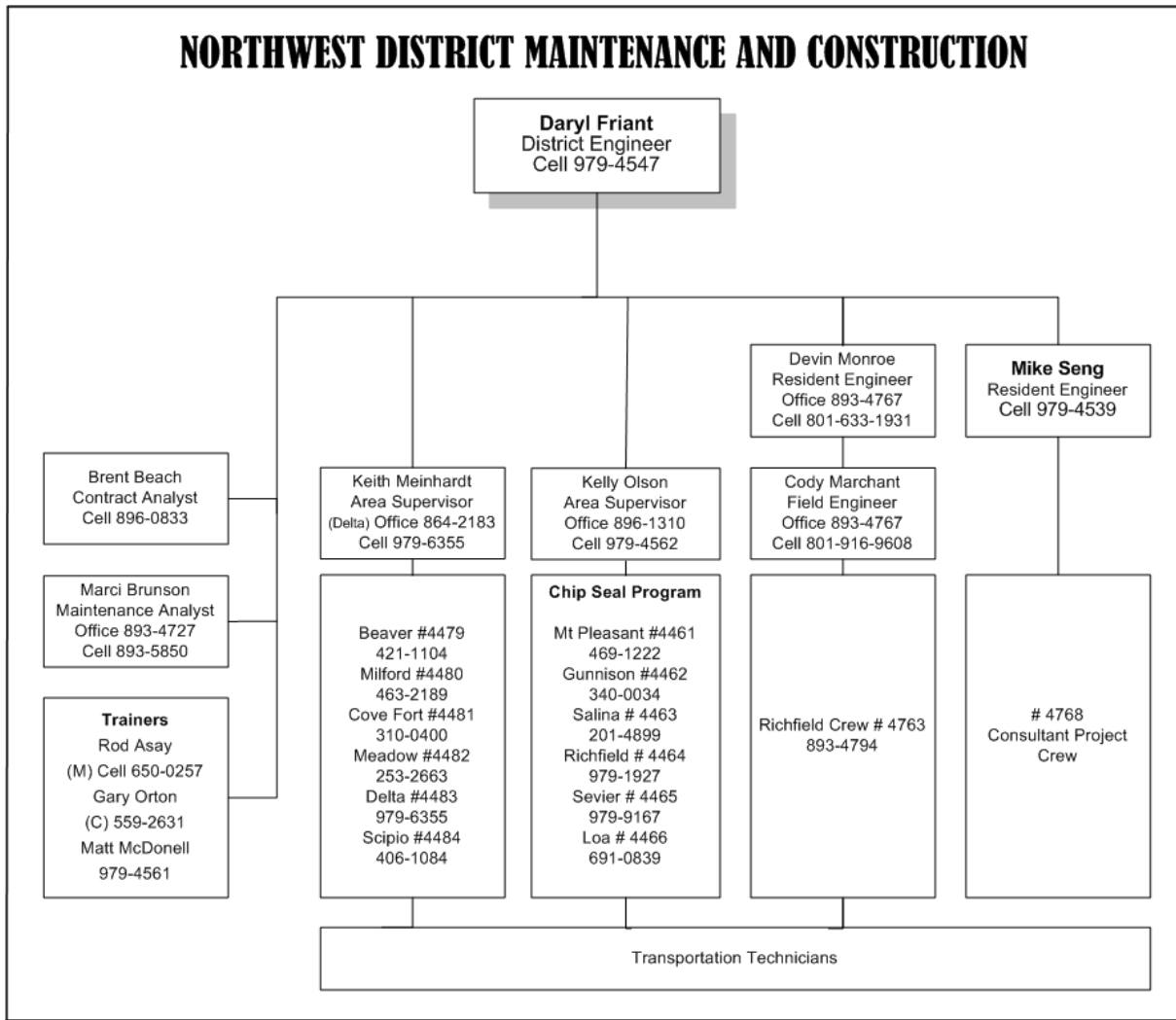
Pat McGann
Area Supervisor
 (M) Office 259-5030 x24
 Cell 260-2537

4450 - Bluff Station 672-2213	4451 - Blanding Station 678-2680	4452 - Monticello Station 587-2620	4453 - Moab Station 259-5030 x25	4454 - Thompson Station 285-2220
Freeman Sam Station Supervisor Cell 485-0570	Gary Black Station Supervisor Cell 459-1542	Chet Johnson Station Supervisor Cell 459-1202	Milo Randall Station Supervisor Cell 220-1897	Von Bowerman Station Supervisor Cell 691-0089
Fred Talker Maint Trans Tech III Cell 225-6640	Forest Crofts Maint Trans Tech III Cell 459-1233	Ruel Todd Randall Maint Trans Tech III Cell 459-1977	Ken Ballantyne Inspection Trans Tech III Cell 260-1896	Steven Taylor Inspection Trans Tech III 220-1121
Donald Kay Transportation Tech II	John Lyman Const Trans Tech III	Nathan Freestone Materials Trans Tech III	Jason Standage Maint Trans Tech III Cell 480-263-3585	Bob Holloway Maint Trans Tech III
John Martinez Transportation Tech II	Cletis Hatch Transportation Tech II	Jonathan Nielson Transportation Tech II	Eric Betts Materials Trans Tech III	Blaine Allen Transportation Tech II
Matt Tortalita Transportation Tech I	Vance Adams Transportation Tech II	Chance Shumway Transportation Tech I	Rob Garcia Transportation Tech II	Adam Gardner Transportation Tech I
Jeremy Jones Transportation Tech I	Paul Marian Transportation Tech II	Wyatt Holyoak Transportation Tech I	Kevin Dull Transportation Tech I	Josh Jarvis Transportation Tech I
			Colton Lee Transportation Tech I	

Daniel Allred
Area Supervisor
 Office 636-1470
 (P) Cell 820-4434

4455 - Green River Station 564-3316	4456 - Huntington Station 687-9969	4457 - Emery Station 286-2276	4459 - Wellington Station 637-3294	4460 - Colton Station 870-8772	4467 - Hanksville Station 542-3486
Ty Mecham Station Supervisor Cell 820-2836	Jeremy Larsen Station Supervisor Cell 749-0725	Mike Christensen Station Supervisor Cell 749-7070	Tab Davis Station Supervisor Cell 630-8830	Brian Nielsen Station Supervisor Cell 820-4435	Stan Roberts Station Supervisor Cell 813-2024
Juan Lovato Maint Trans Tech III Cell 650-6903	Vaughn Guymon Transportation Tech III Cell 650-9655	Tate Weber Inspection Trans Tech III Cell 749-6093	Tim Turner Station Lead Cell 801-556-1392	Randy Dolinski Transportation Tech III Cell 820-4775	Dale Sellers Maint Trans Tech III Cell 253-2347
Ben Farnsworth Inspection Trans Tech III Cell 820-4197	Wess Walls Transportation Tech III Cell 650-0796	David McKee Transportation Tech II	Layne Matkin Materials Trans Tech III 630-3613	Kirk Sherman Transportation Tech III Cell 650-7451	Brandon Whipple Transportation Tech II
Josh Wilmarth Transportation Tech II	Calvin Willson Transportation Tech II	McCoy Hurst Transportation Tech II	Davie Baird Transportation Tech II	Richard Ghrist Transportation Tech II	Fred Weihing Transportation Tech II
Mike Ryan Transportation Tech II	Jacob Ibanez Transportation Tech II	Lynn Mortensen Transportation Tech I	Colton Oneil Transportation Tech II	Eric Stillson Transportation Tech II	Russ Wells Transportation Tech I
Bo Wareham Transportation Tech I	Jerry Clark Transportation Tech II	Branden Wilberg Transportation Tech I	DuWayne McCormick Transportation Tech I	Brandon Hansen Transportation Tech I	
			Evan Olauson Transportation Tech I	Sean Anderson Transportation Tech I	
				Wyatt Howard Transportation Tech I	

NORTHWEST DISTRICT MAINTENANCE AND CONSTRUCTION

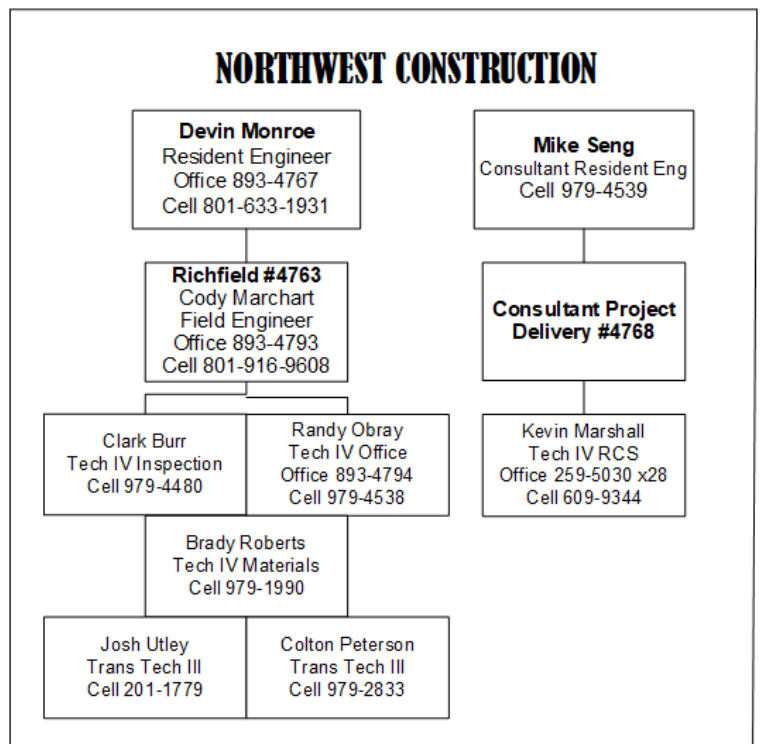


Maintenance and Construction:

The Construction and Maintenance Division is lead by two Region District Engineers. They have 275 employees and are responsible for all construction activities and resources. They are responsible for project sequencing, resource allocation, process review and oversight. They are the federal steward for all projects and obligated to assure compliance with regulations for all construction projects.

The District Engineers have 38 maintenance crews and are responsible for all maintenance activities including snow plans, feature inventories, condition targets, and roadway activities required to maintain state routes. They are responsible to balance transportation technician resources between construction and maintenance activities. They utilize two Area Engineers, six Construction Engineers, six Area Supervisors, six Field Engineers and their associated staff to accomplish the variety of roadway maintenance and construction activities.

NORTHWEST CONSTRUCTION



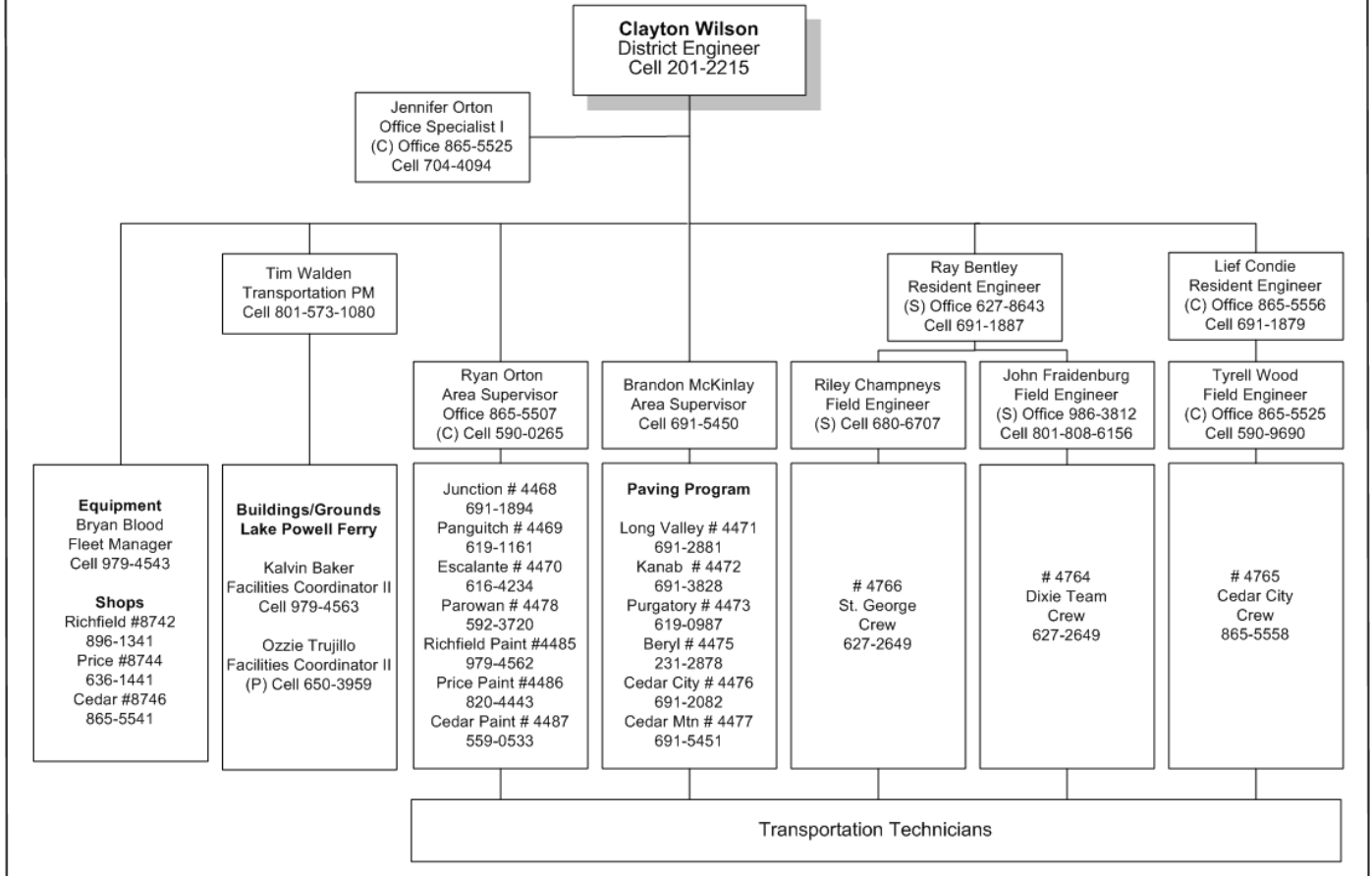
Kelly Olson
 Area Supervisor
 Office 896-1310
 Cell 979-4562

4461 - Mt. Pleasant Station 462-2272	4462 – Gunnison Station 528-7886	4463 - Salina Station 529-7222	4464 - Richfield Station 896-1719	4465 – Sevier	4466 – Loa Station 836-2631
Scott Justesen Station Supervisor Cell 469-1222	Preston Pritchard Station Supervisor Cell 340-0034	Robert Young Station Supervisor Cell 201-4899	Lance Mooney Station Supervisor Cell 979-1927	Waco Lund Station Supervisor Cell 979-9167	Marc Wood Station Supervisor Cell 691-0839
Thomas Davis Inspection Trans Tech III Cell 660-0757	Brian Sorensen Transportation Tech III Cell 979-1348	Morgan Shaw Transportation Tech II	David Bybee Maint Trans Tech III	Cullen Balch Special Trans Tech III Cell 201-1061	Wesley Erickson Inspection Trans Tech III Cell 691-2028
Chad Beck Maint Trans Tech III Cell 469-0319	Marc Lambert Transportation Tech II	Billy Tanner Transportation Tech II	Weston Southwick Transportation Tech II	Rick Byers Transportation Tech II	Kerry Johnson Transportation Tech II
Riley Shelley Transportation Tech II	Brandon Otten Transportation Tech I	Chavis Jensen Transportation Tech II	JD Wright Transportation Tech II	Keldon Johnson Transportation Tech II	Shawn Davis Transportation Tech II
Chris Long Transportation Tech II	Blake Balch Transportation Tech I	Andrew Burd Transportation Tech I	Colton Curtis Transportation Tech II	Chase Peterson Transportation Tech I	Mel Batty Transportation Tech II
Jess Bailey Transportation Tech I		Logan Twitchell Transportation Tech I	Aldo Gonzalez Transportation Tech I		Jake Jones Transportation Tech II
			Kodey Richards Transportation Tech I		

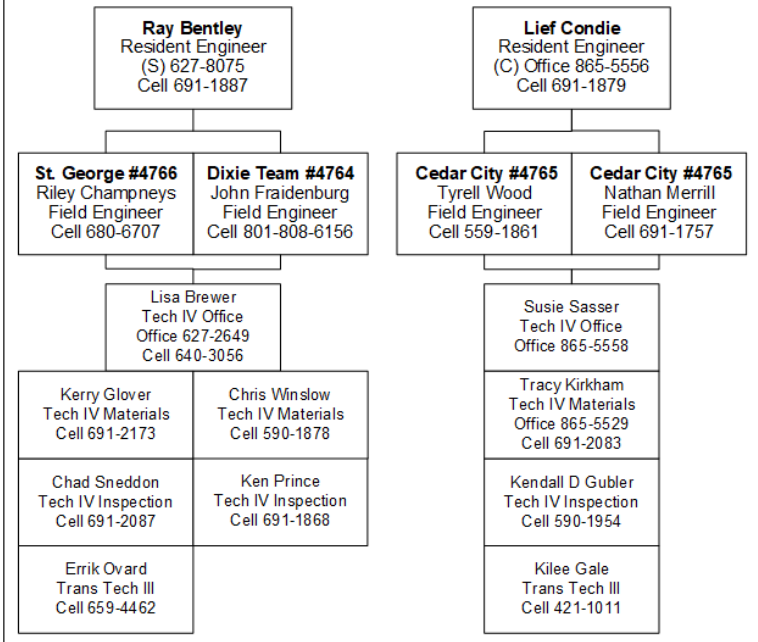
Keith Meinhardt
 Area Supervisor
 (Delta) Office 864-2183
 Cell 979-6355

4479 – Beaver Station 438-2624	4480 – Milford Station 387-5540	4481 - Cove Fort Station 438-5663	4482 - Meadow Station 842-7188	4483 - Delta Station 864-2196	4484 – Scipio Station 758-2453
Tommy Smith Station Supervisor Cell 421-1315	Travis Willden Station Supervisor Cell 463-2198	Zane Yardley Station Supervisor Cell 310-0400	Bryce Whitaker Station Supervisor Cell 253-2663	John Christensen Station Supervisor Cell 201-4187	Dale Robins Station Supervisor Cell 406-1084
Clint Beaumont Maint Trans Tech III Cell 310-0525	Travis Seifers Transportation Tech III Cell 691-8728	Russell Bradshaw Transportation Tech III Cell 310-0798	Tim Turner Maint Station Lead Cell 253-0933	Bill Dearden Maint Station Lead Garrison 559-5614	Paul Johnson Transportation Tech III Cell 253-0007
Kelton Beacham Transportation Tech III Cell 421-1861	Monty Griffiths Transportation Tech III	Dustin Carter Transportation Tech III	Jared Hare Transportation Tech III Cell 385-207-9312	Kenneth J Hyde Transportation Tech III Cell 864-7200	Kasey Brunson Transportation Tech III Cell 979-4709
Jacob Alldredge Transportation Tech I	Gabe Thompson Transportation Tech II	Neal Yardley Transportation Tech II	Jason Stewart Transportation Tech II	Lydell Lovell Transportation Tech II	Sean Cain Transportation Tech I
Lee Babb Transportation Tech I	Tayson Willis Transportation Tech I	Kyle Cox Transportation Tech II	Garrett Starley Transportation Tech I	Ryan Evans Transportation Tech I	Mccrae Thatcher Transportation Tech I
		Logan Blackmer Transportation Tech I		John Benson Transportation Tech I	
				Adam Pace Transportation Tech I	

SOUTHWEST DISTRICT MAINTENANCE & CONSTRUCTION



SOUTHWEST CONSTRUCTION



Lyle Banks Fleet Manager Cell 979-6057



Ryan Orton
Area Supervisor
(C) Cell 590-0265

4468 - Junction Station 577-2873	4469 - Panguitch Station 676-2301	4470 - Escalante Station 826-4233	4478 - Parowan Station 477-3715	4485 - Paint Crew Richfield 896-1343	4486 - Paint Crew Price 636-1443	4487 - Paint Crew Cedar 586-0284
Corwin Christensen Station Supervisor Cell 691-1894	Gaylen Dalton Station Supervisor Cell 619-1161	Dan Cottam Station Supervisor Cell 616-4232	David Burton Station Supervisor Cell 592-3720	George Jay Simon Station Supervisor Cell 979-1486	Leonard Heaps Station Supervisor Cell 820-4443	John Evans Station Supervisor Cell 559-0533
Brent Jensen Transportation Tech III Cell 231-4381	Kenny Orton Transportation Tech III Cell 676-3540	Gary Spencer Maint Trans Tech III	Mathew Rhodes Transportation Tech III	Bryan Morgan Transportation Tech II	Pete Johansen Special Trans Tech III Cell 749-2546	Jason Holmes Transportation Tech II
Marcus Gleave Inspection Trans Tech III	Dusty Rogerson Transportation Tech II	Warren Haycock Inspection Trans Tech III	Burke DeGroff Transportation Tech III Cell 669-5707	Tim Watts Transportation Tech II	Steve Feuers Transportation Tech II	Clayton Cluff Transportation Tech II
Geordin Gass Transportation Tech II	Josh Brinkerhoff Transportation Tech I	Andy Mortensen Transportation Tech II	Tracy Packwood Transportation Tech II	Austin Sorenson Transportation Tech I	Darren Mortenson Transportation Tech II	Nathan Stones Transportation Tech II
		Bret Brooks Transportation Tech I	Dustin Bliss Transportation Tech II	Dave Torgerson Transportation Tech I	Max Conder Transportation Tech I	Kim Lovell Transportation Tech II
			Blake Schiers Transportation Tech II			
			Tenesha Robinson Transportation Tech I			

Brandon McKinlay
Area Supervisor
(C) Cell 691-5450

4471 - Long Valley Station 648-2398	4472 - Kanab Station 644-2476	4473 - Purgatory Station 627-8643	4475 - Beryl Station 439-5560	4476 - Cedar City Station 586-2103	4477 - Cedar Mtn Station 865-5540
Jason Sorensen Station Supervisor Cell 691-3221	Shayne Ramsay Station Supervisor Cell 691-3828	Todd Abbott Station Supervisor Cell 619-0987	Curt Flanigan Station Supervisor Cell 231-2878	Erick Cox Station Supervisor Cell 691-2082	Kevin Lambeth Station Supervisor Cell 691-5451
Alex Lamb Transportation Tech III Cell 899-1606	Kerry Glover Transportation Tech III Cell 691-2173	Ryan Christison Maint Station Lead	Justin Hulet Transportation Tech III Cell 691-0796	Jake Adams Transportation Tech III	Brady Abbott Transportation Tech III
Sean Frost Transportation Tech II	Delynn Crofts Transportation Tech III 691-3851	Josh Brooks Transportation Tech III Cell 668-7007	Colby Hunt Inspection Trans Tech III	Randy Sparkman Transportation Tech III	Chris Evans Transportation Tech I
Gary Tait Transportation Tech I	Coby Glover Transportation Tech I	Josh Macfarlane Transportation Tech III Cell 691-1884	Kyle Christensen Transportation Tech II	Jake Urie Maint Trans Tech III Cell 590-0519	Clay Slack Transportation Tech I
Jason Bauer Transportation Tech I		Justin Cannon Transportation Tech III	Lloyd Watkins Transportation Tech I	Oscar Colon Transportation Tech III	Kaleb Parry Transportation Tech I
		Richard Jensen Transportation Tech II		Keith Savage Transportation Tech II	
		Devin Norton Transportation Tech I		Adam King Transportation Tech II	
		Jimmy Low Transportation Tech I		Shae Reber Transportation Tech II	
		Ashley Neilsen Transportation Tech I			