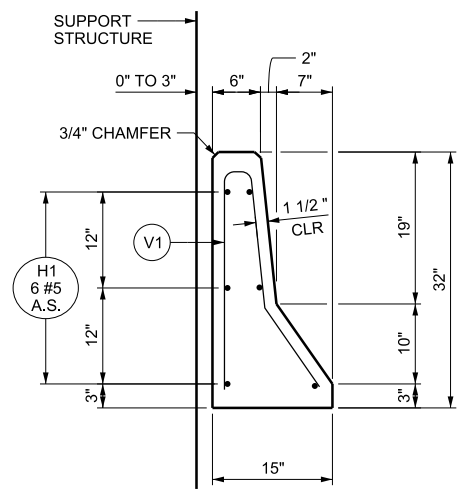


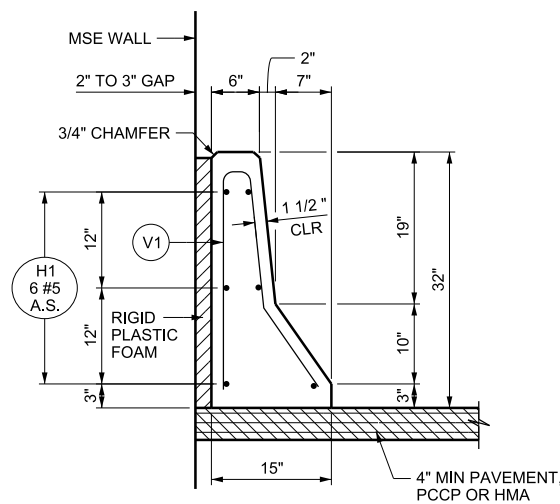
VIEW B-B

ELEVATION

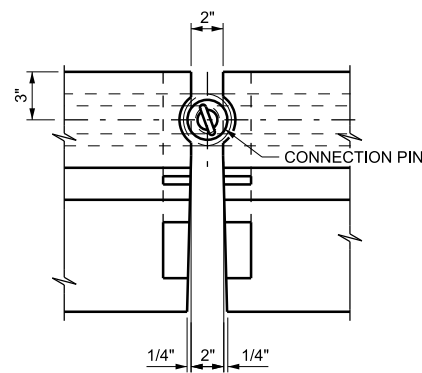
20'-0" LENGTH SHOWN, 12'-6" LENGTH SIMILAR



SECTION A-A
AT SUPPORT STRUCTURE



SECTION A-A
AT MSE WALL



PARTIAL PLAN

BAR MARK	BAR SIZE	NO. BARS	LOCATION	SKETCH
H1	#5	6	HORIZONTAL IN BARRIER TIED INSIDE V1 BARS	
V1	#5	16 (20'-0" LENGTH) OR 11 (12'-6" LENGTH)	VERTICAL IN BARRIER	
TOTAL LENGTH = 4'-10 1/2"				

NOTES

- SEE STD DWG BA 1A1 FOR GENERAL NOTES.
- SEE "BARRIER CONNECTION DETAILS" ON STD DWG BA 1A2 FOR CONNECTION LOOP DETAILS.
- DO NOT USE AS RETAINING BARRIER, REFER TO STD DWG BA 1C FOR RETAINING BARRIER APPLICATIONS.
- USE ONLY IN FRONT OF A SUPPORT STRUCTURE (E.G. BRIDGE ABUTMENT) OR A MSE WALL. DO NOT USE IN A WORK ZONE APPLICATION.
- BARRIER UNIT WEIGHT: 3.0 TONS (20'-0" LENGTH)
1.9 TONS (12'-6" LENGTH)

SUPPLEMENTAL DRAWING

REVISIONS

1	08/30/2012	SDD	REVISED NOTE 4.
2	06/26/2014	SDD	REVISED H1 BAR DIMENSION.

UTAH DEPARTMENT OF TRANSPORTATION
STANDARD DRAWINGS FOR ROAD AND BRIDGE CONSTRUCTION
SALT LAKE CITY, UTAH

RECOMMENDED FOR APPROVAL
Randall J. Cook
CHAIRMAN STANDARDS COMMITTEE
APPROVED
DATE JUN. 26, 2014
DEPUTY DIRECTOR

PRECAST CONCRETE
HALF BARRIER - 32 INCH
NEW JERSEY SHAPE

STD. DWG. NO.
BA 2E

STANDARD DRAWING TITLE