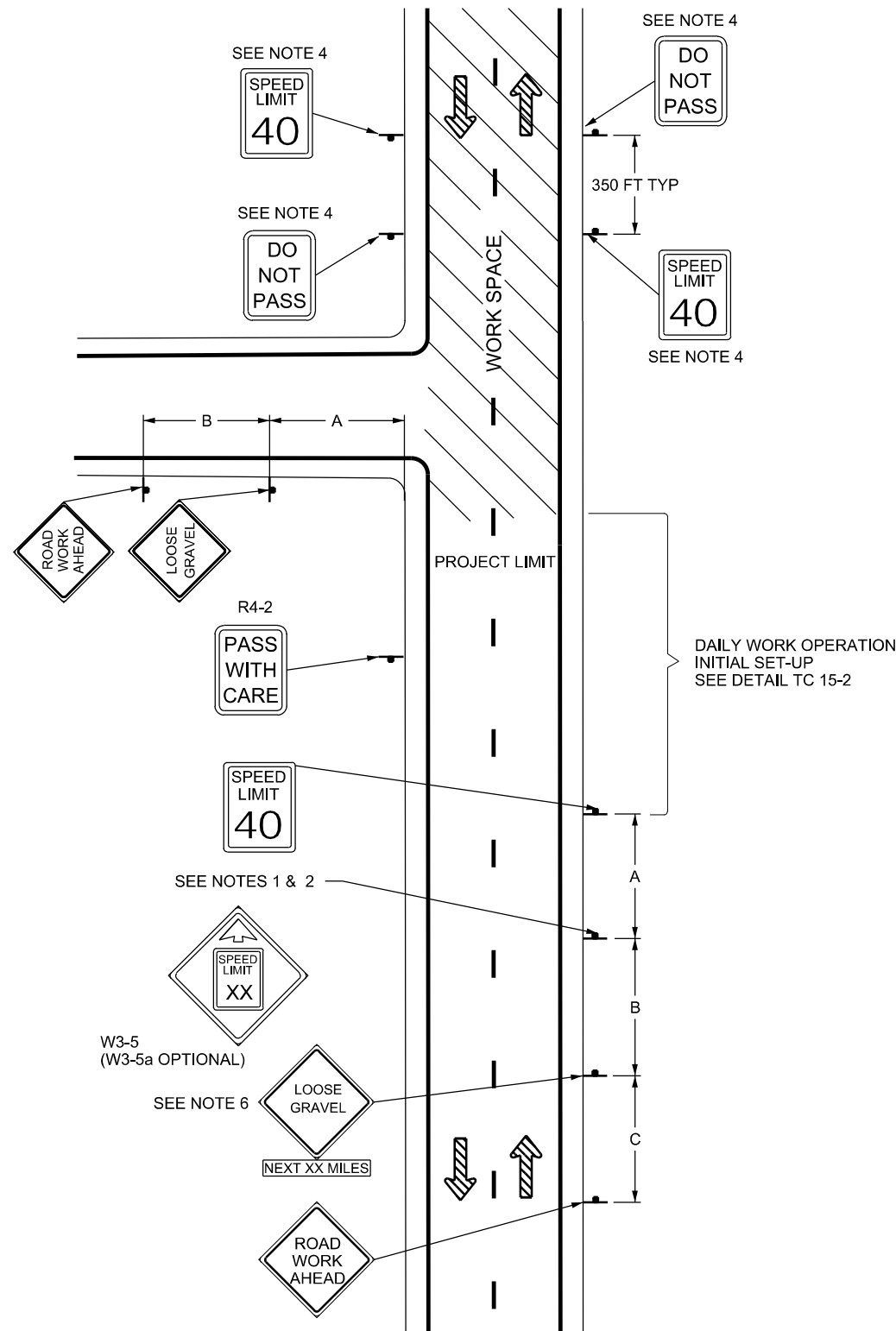


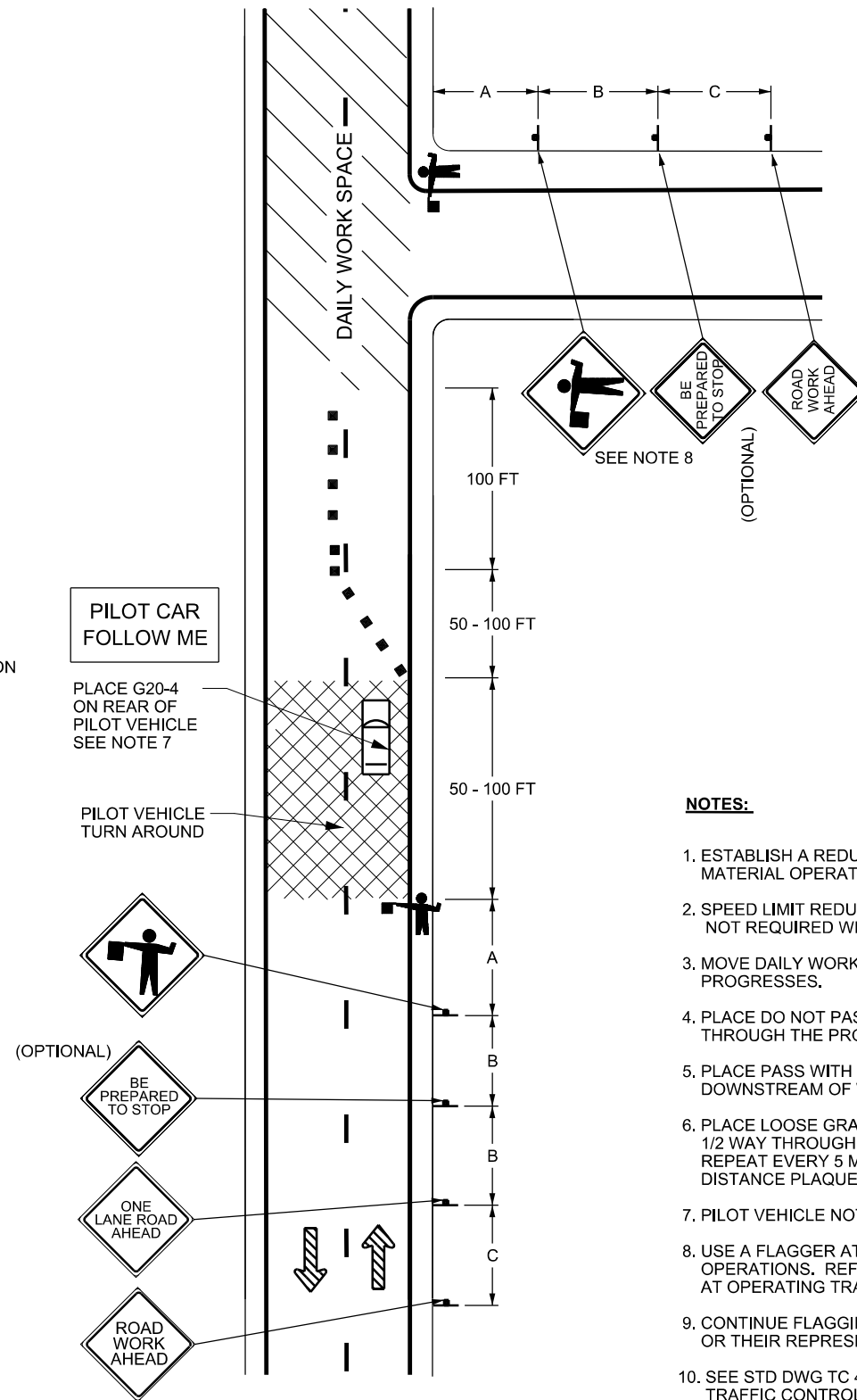
06-May-2020 D:\N\Standard\Drawings\Imperial\2017 Approved\Supplemental\Issues\Suppl13 Approved Apr-1 - 2020\Backup\TC15.dgn



(DETAIL TC 15-1)

PROJECT SIGNING 2 LANE-2 WAY

SEE NOTE 13



**FLAGGING /PILOT VEHICLE OPERATION
(DETAIL TC 15-2)**

DAILY WORK OPERATION 2 LANE-2 WAY

SEE NOTE 13

NOTES:

1. ESTABLISH A REDUCED SPEED LIMIT OF 40 MPH FOR SEAL COAT AND COVER MATERIAL OPERATIONS WHEN SPEEDS ARE GREATER THAN 40 MPH.
2. SPEED LIMIT REDUCTION AHEAD (W3-5) AND SPEED LIMIT SIGNING NOT REQUIRED WHEN EXISTING SPEED LIMITS ARE 40 MPH OR LESS.
3. MOVE DAILY WORK OPERATION SIGNING, DETAIL TC 15-2, AS WORK PROGRESSES.
4. PLACE DO NOT PASS (R4-1) AND SPEED LIMIT SIGNS AT 1 MILE INTERVALS THROUGH THE PROJECT AND AFTER MAJOR INTERSECTIONS.
5. PLACE PASS WITH CARE (R4-2) SIGN ONLY IF PASSING IS ALLOWED DOWNSTREAM OF WORK ZONE.
6. PLACE LOOSE GRAVEL (W8-7) SIGN WITH APPROPRIATE DISTANCE MESSAGE 1/2 WAY THROUGH THE PROJECT IF PROJECT LENGTH IS LESS THAN 10 MILES. REPEAT EVERY 5 MILES ON LONGER PROJECTS WITH AN AUXILIARY DISTANCE PLAQUE COUNTING DOWN THE DISTANCE TO THE PROJECT LIMITS.
7. PILOT VEHICLE NOT TO EXCEED SPEED OF 40 MPH.
8. USE A FLAGGER AT ALL INTERSECTING ROADWAYS DURING DAILY WORK OPERATIONS. REFER TO STANDARD SPECIFICATION 01554 FOR REQUIREMENTS AT OPERATING TRAFFIC SIGNALS.
9. CONTINUE FLAGGING AND PILOT VEHICLE OPERATIONS UNTIL THE ENGINEER OR THEIR REPRESENTATIVE ALLOWS FREE FLOW TRAFFIC TO PROCEED.
10. SEE STD DWG TC 4A FOR TAPER, BUFFER ZONE & SIGN SPACING CHART AND TRAFFIC CONTROL DEVICE LEGEND.
11. SEE TC 4D SERIES STD DWGS FOR DESIGN AND LAYOUT OF FINES DOUBLE SIGN, FINES DOUBLE SIGN WITH FINE NOTIFICATION, AND FINES DOUBLE SPEED LIMIT ASSEMBLY IF REQUIRED.
12. SEE STD DWG TC 4C FOR PROJECT LIMIT SIGNING.
13. USE SAME SIGN SEQUENCE, SPACING AND FLAGGER FOR OPPOSITE DIRECTION OF TRAFFIC.
14. REMOVE REDUCED SPEED LIMIT RESTRICTIONS AND RETURN TO PRE-CONSTRUCTION POSTED SPEED LIMIT ONCE THE ROADWAY SURFACE HAS BEEN SWEEPED AND FLUSHED AND THE AFFECTED WORK ZONE HAS APPROPRIATE PAVEMENT MARKINGS.

REVISIONS	
NO.	DATE
1	2/27/2020 JW
2	4/30/2020 JW

UTAH DEPARTMENT OF TRANSPORTATION
STANDARD DRAWINGS FOR ROAD AND BRIDGE CONSTRUCTION
SALT LAKE CITY, UTAH

APR. 30, 2020
DATE

APR. 30, 2020
DATE

CHAIRMAN STANDARDS COMMITTEE
APPROVED

DEPUTY DIRECTOR

**TRAFFIC CONTROL
2 LANE/2 WAY
SEAL COAT WITH
COVER MATERIAL**

STANDARD DRAWING TITLE

STD. DWG. NO.
TC 15

SUPPLEMENTAL DRAWING