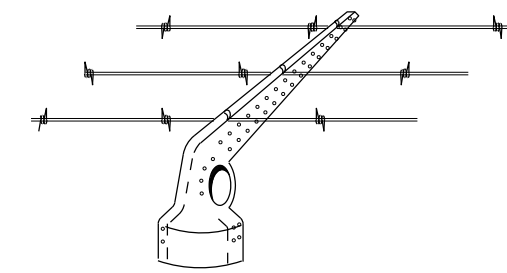


TWISTED & BARBED SELVAGE TYPE I

KNUCKLED SELVAGE TYPE II

KNUCKLED SELVAGE WITH TENSION WIRE TYPE III

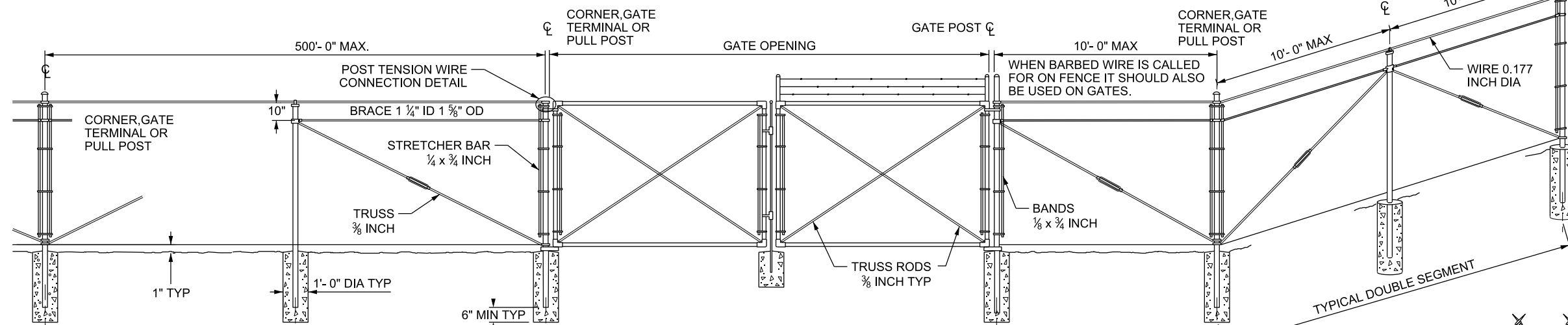
TWISTED & BARBED SELVAGE WITH TENSION WIRE TYPE IV



BARBED WIRE AND ARM

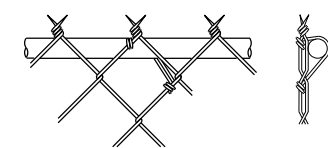
(WHEN REQUIRED)

CORNER, GATE TERMINAL OR PULL POST



TYPICAL MULTIPLE BAY SEGMENT

TYPICAL DOUBLE SEGMENT

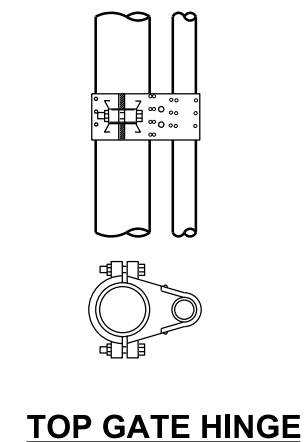


PIPE POST TIE

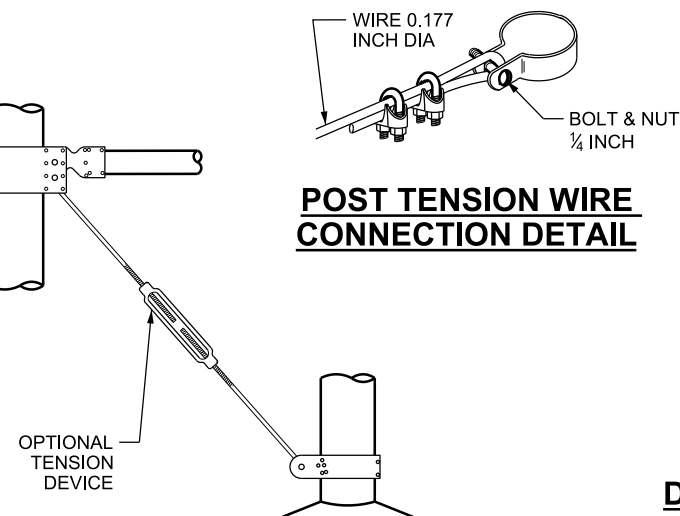
HEIGHT	GATE OPENING	GATE POST	GATE FRAME
UNDER 6 FT	SINGLE TO 6 FT OR DOUBLE TO 12 FT	2"	1"
	SINGLE OVER 6 TO 8 FT OR DOUBLE OVER 12 TO 16 FT	2½"	1½"
	SINGLE OVER 8 TO 12 FT OR DOUBLE TO 16 TO 24 FT	3½"	
6 FT AND OVER*	SINGLE TO 6 FT OR DOUBLE TO 12 FT	2½"	1½"
	SINGLE 6 TO 13 FT OR DOUBLE OVER 12 TO 24 FT	3½"	
	SINGLE OVER 13 TO 18 FT OR DOUBLE OVER 24 TO 36 FT	6"	
	SINGLE OVER 18 FT OR DOUBLE OVER 36 FT	8"	

* GATES OVER 6 FT IN HEIGHT AND WIDER THAN 12 FT WILL REQUIRE (3) INDUSTRIAL PRESSED STEEL HINGES.

HEIGHT OF FABRIC	DEPTH OF POSTS	LENGTH OF END CORNER OR PULL POSTS	LENGTH OF LINE POSTS	SIZE OF POSTS							
				END, CORNER & PULL POSTS				LINE POST MIN. SIZE			
				NOM SIZE	OUTSIDE DIA	PIPE WEIGHT		NOM SIZE	OUTSIDE DIA.	PIPE WEIGHT	
7 FT	3 FT	10 FT	9'-8"	2 ½"	2.875"	5.80	4.64	2"	2.375"	3.65	3.11
6 FT	3 FT	9 FT	8'-8"	2"	2.375"	3.65	3.11	1½"	1.900"	2.72	2.28
5 FT	3 FT	8 FT	7'-8"	2"	2.375"	3.65	3.11	1½"	1.900"	2.72	2.23
4 FT	2 FT	6 FT	5'-8"	2"	2.375"	3.65	3.11	1½"	1.900"	2.72	2.23
3 FT	2 FT	5 FT	4'-8"	2"	2.375"	3.65	3.11	1½"	1.900"	2.72	2.23

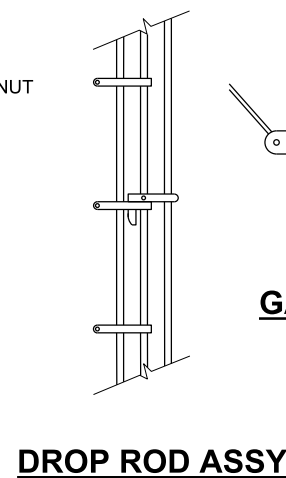


TOP GATE HINGE

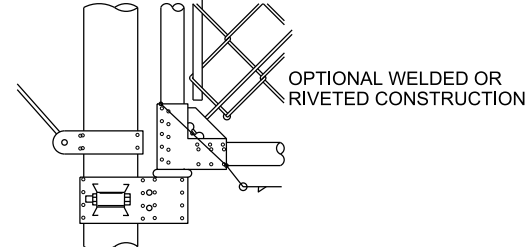


POST TENSION WIRE CONNECTION DETAIL

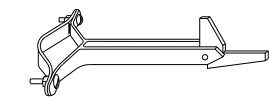
BRACE & TRUSS CONNECTIONS



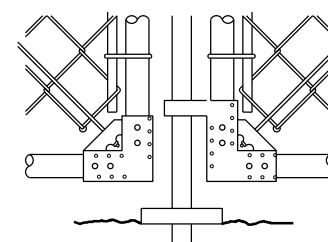
DROP ROD ASSY



GATE HINGE DETAIL BOTTOM



GATE HOLD BACK DETAIL



GATE STOP DETAIL

NOTES:

- POSTS: USE ASTM F 1083 SCHEDULE 40 PIPE OR, ASTM F 1043 GROUP IC (HIGH STRENGTH) PIPE OF THE SIZE SHOWN IN THE CHART. WEIGHT IN LB/FT WITH TOLERANCE OF 10 PERCENT. OTHER TYPES OF POSTS WITH EQUAL OR GREATER SECTION MODULUS MAY BE USED IF APPROVED BY THE ENGINEER.
- GALVANIZE SCHEDULE 40 PIPE ACCORDING TO ASTM F 1083.
- COAT HIGH STRENGTH PIPE ACCORDING TO ASTM F 1043 GROUP IC. USE TYPE B COATINGS.
- TRUSS RODS AND BRACES NOT REQUIRED ON FABRIC HEIGHTS LESS THAN 5 FT.

NO.	DATE	APPR.	REMARKS
1	6/28/18		POST SIZE TABLE: ASTM REF. ADDED AND C-SECTION DIM. REMOVED. NOTES REVISED.

UTAH DEPARTMENT OF TRANSPORTATION
STANDARD DRAWINGS FOR ROAD AND BRIDGE CONSTRUCTION
SALT LAKE CITY, UTAH

RECOMMENDED FOR APPROVAL
Randy P. [Signature]
CHAIRMAN STANDARDS COMMITTEE

APPROVED
[Signature]
DEPUTY DIRECTOR

JUN. 28, 2018
DATE

JUN. 28, 2018
DATE

CHAIN LINK FENCE

STANDARD DRAWING TITLE

STD. DWG. NO. FG 6

D:\DGN_Files\2018\Standards\Spec\Section\2017\Section\11_Supp_Issues\Issue_5_06-28-2018\Drawings\F006.dgn 08-JUL-2018