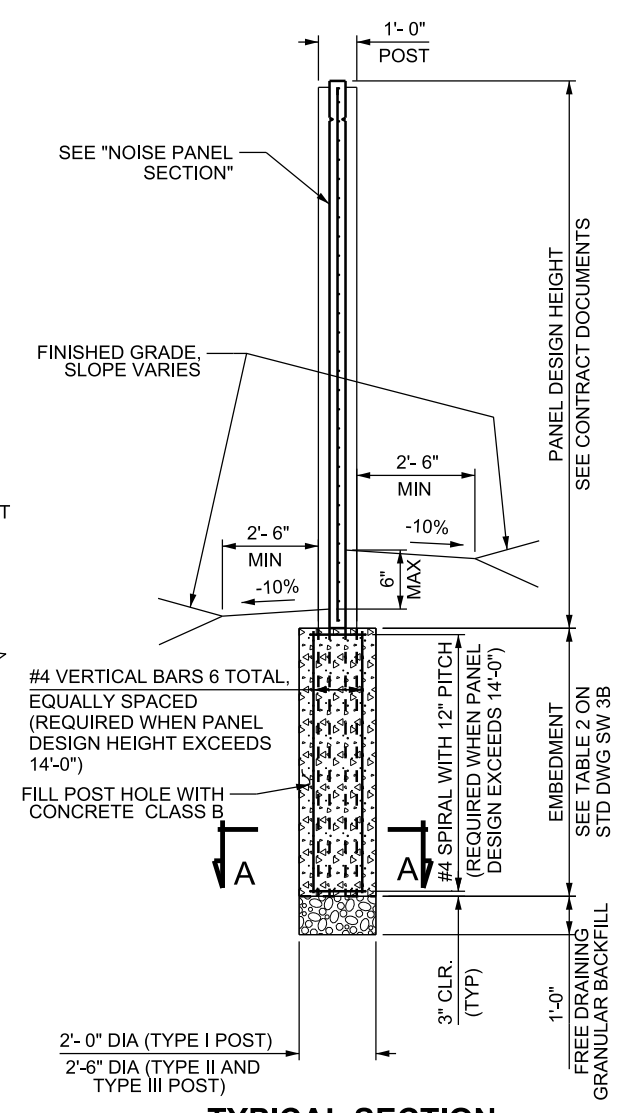
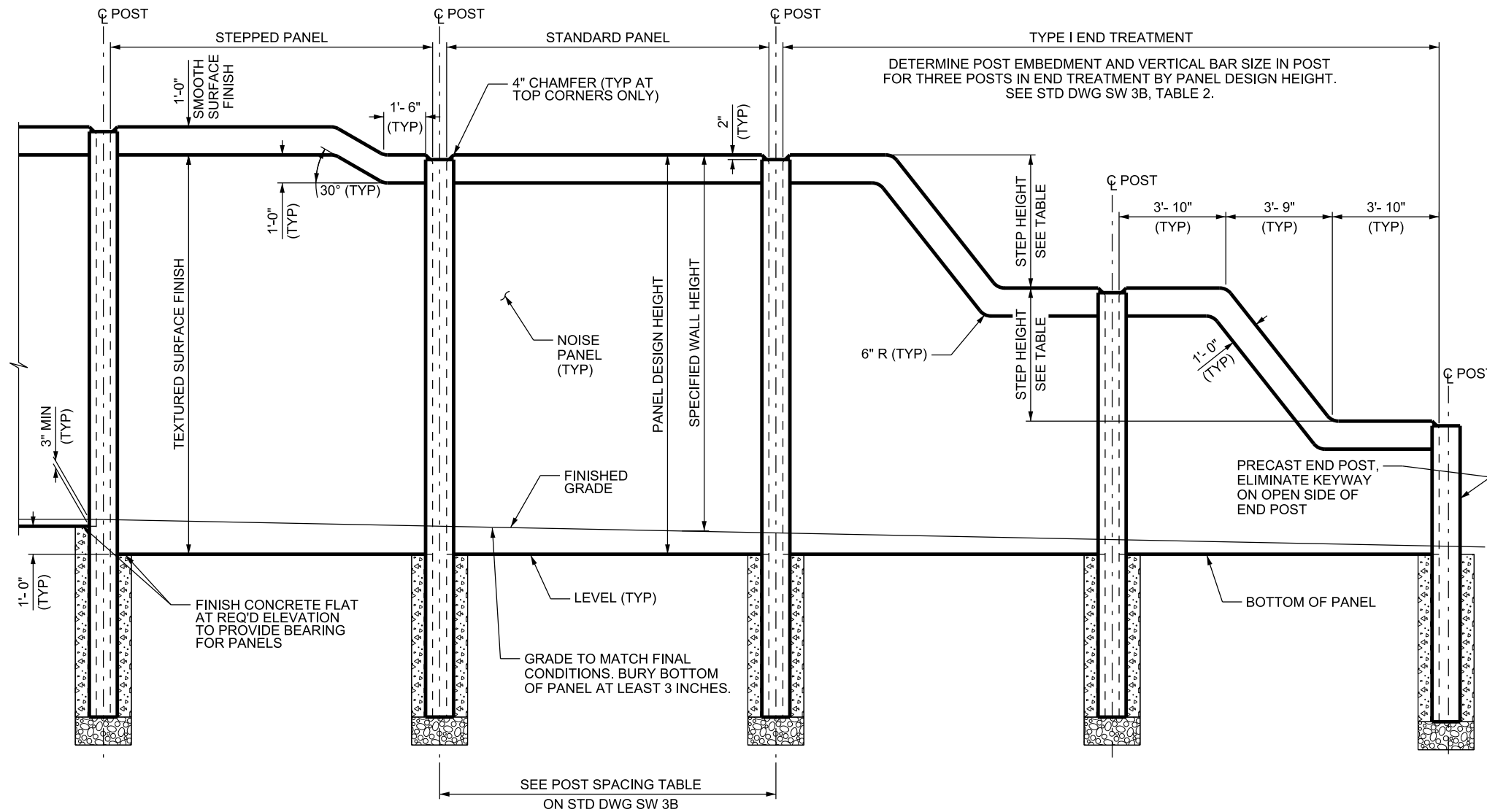


D:\Projects\2017\Section\11_Supp_Issues\Issue 5_06-28-2018\Drawings\SW3A.dgn 09-JUL-2018



NO.	DATE	APPR.	REVISED CONCRETE CLASS	REMARKS
1	06/28/2018	RDC		

UTAH DEPARTMENT OF TRANSPORTATION
STANDARD DRAWINGS FOR ROAD AND BRIDGE CONSTRUCTION
SALT LAKE CITY, UTAH

RECOMMENDED FOR APPROVAL
Randy A. [Signature]
CHAIRMAN STANDARDS COMMITTEE

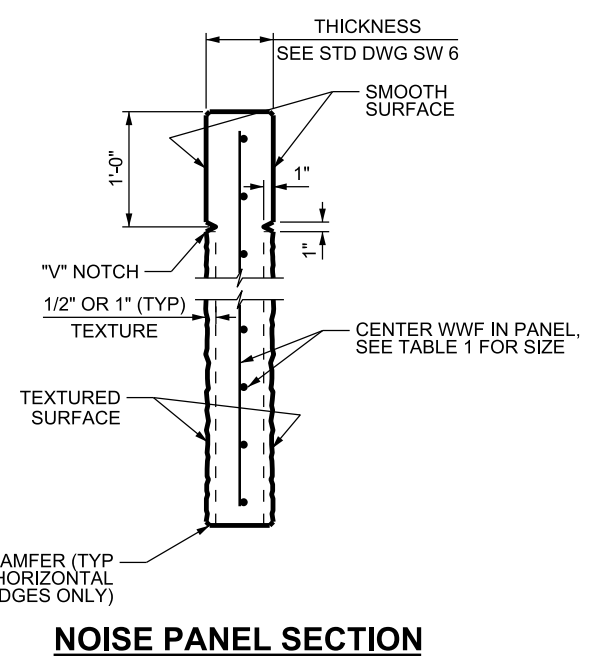
APPROVED
[Signature]
DEPUTY DIRECTOR

DATE: JUNE 28, 2018
DATE: JUNE 28, 2018

PRECAST CONCRETE NOISE WALL
1 OF 2

STANDARD DRAWING TITLE

STD. DWG. NO.
SW 3A



PANEL DESIGN HEIGHT	PANEL REINFORCEMENT
≤ 6'-0"	WWF 6x6 - W10xW10
7'-0"	WWF 6x6 - W10xW10
8'-0"	WWF 6x6 - W10xW10
9'-0"	WWF 6x6 - W10xW10
10'-0"	WWF 6x6 - W10xW10
11'-0"	WWF 6x6 - W10xW10
12'-0"	WWF 6x6 - W10xW10
13'-0"	WWF 6x6 - W20xW20
14'-0"	WWF 6x6 - W20xW20
15'-0"	WWF 6x6 - W20xW20
16'-0"	WWF 6x6 - W20xW20
17'-0"	WWF 6x6 - W20xW20

NOISE PANEL DESIGN HEIGHT	STEP HEIGHT	NUMBER OF STEPS
≤ 7'-0"	NONE	NONE
8'-0"	3'-0"	1
9'-0"	4'-0"	1
10'-0"	4'-0"	1
11'-0"	5'-0"	1
12'-0"	3'-6"	2
13'-0"	4'-0"	2
14'-0"	4'-6"	2
15'-0"	4'-6"	2
16'-0"	5'-0"	2
17'-0"	5'-6"	2

- DESIGN DATA**
- AASHTO LRFD BRIDGE DESIGN SPECIFICATIONS
- PRECAST PANELS & POSTS: CONCRETE CLASS AAA(AE) $f_c = 5,000$ psi;
 f_y (REINF) = 60,000 psi; $n = 8$
- POST HOLES: CONCRETE CLASS B $f_c = 2,500$ psi
 f_y (REINF) = 60,000 psi; $n = 10$
- NOTES**
- CHAMFER EXPOSED CONCRETE CORNERS AS SHOWN.
 - SEE CONTRACT DOCUMENTS FOR LOCATION AND SPECIFIED HEIGHT OF PRECAST NOISE WALL.
 - ALL NOISE PANELS ARE:
HEIGHT: 6 FT MIN TO 17 FT MAX (1 FT INCREMENTS)
LENGTH: 11 FT - 5 INCHES LONG
THICKNESS: 7 INCHES
 - DETERMINE PANEL HEIGHTS AND LOCATIONS OF PANEL STEPS TO PROVIDE SPECIFIED MINIMUM WALL HEIGHT THROUGHOUT ENTIRE LENGTH OF WALL, EXCLUDING END TREATMENTS.
 - CHANGE ELEVATION AT TOP OF NOISE WALL WITH STEPPED PANEL AS SHOWN ON THIS SHEET.
 - BEGIN AND END NOISE WALL WITH END TREATMENT SPECIFIED IN THE CONTRACT DOCUMENTS. TYPE I END TREATMENT SHOWN ON THIS SHEET.
 - EVENLY SPACE PILASTER POSTS AT 200 FT MAXIMUM INTERVAL WHEN REQUIRED. SEE STD DWG SW 5 FOR PRECAST PILASTER POST DETAILS. SEE CONTRACT DOCUMENTS FOR EXACT LOCATIONS.
 - FORM A TEXTURED SURFACE FINISH ON BOTH SIDES OF NOISE PANEL. SEE CONTRACT DOCUMENTS FOR PRESCRIBED TEXTURED SURFACE FINISHES.
 - SEE STD DWG SW 3B FOR SECTION A-A.