



TRAFFIC

EDGE OF TRAVEL LANE

EDGE OF SHOULDER

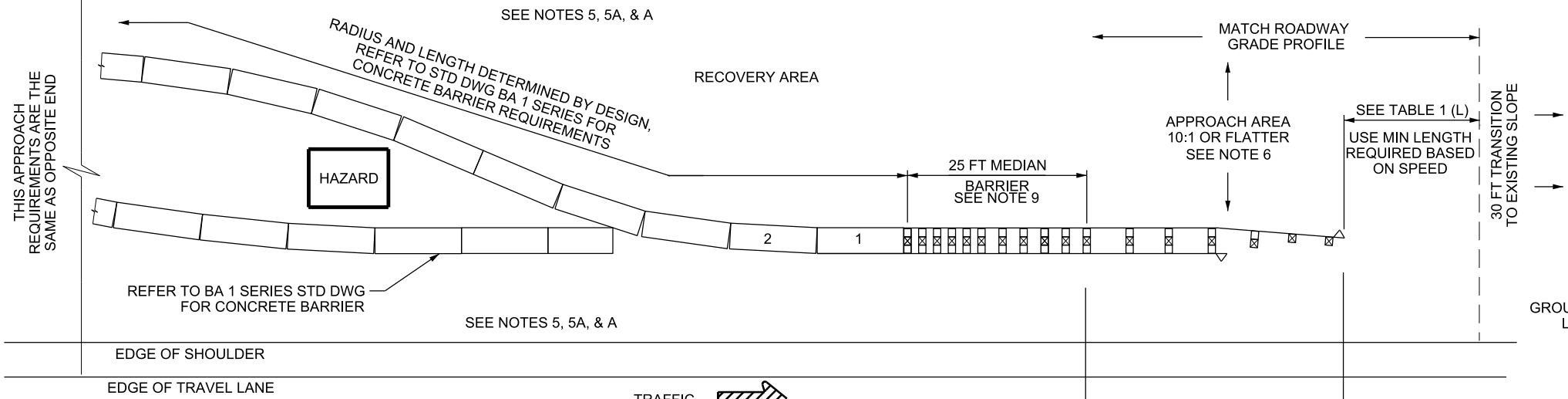
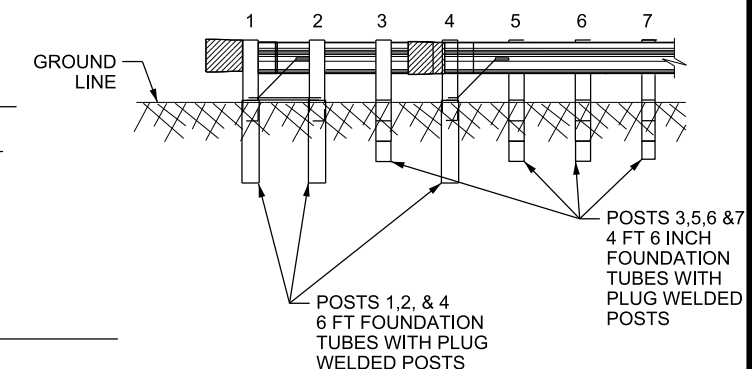


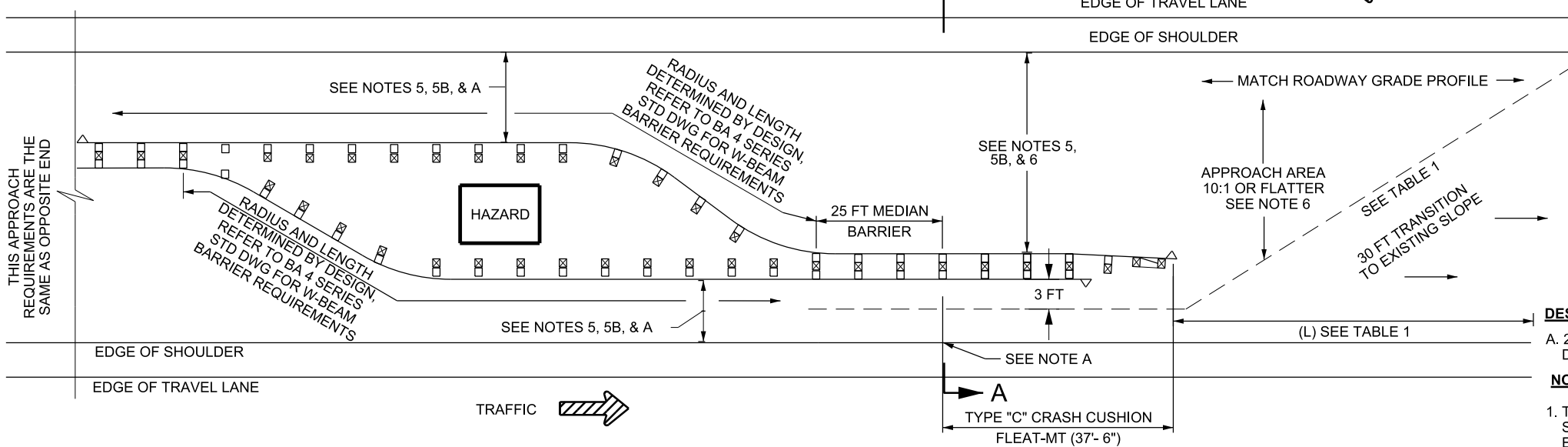
TABLE 1	
SPEED MPH	MIN LENGTH (L)
LESS THAN 40	50 FT
40 TO 55	70 FT
60 TO 80	100 FT



CONCRETE BARRIER INSTALLATION DETAIL

TYPE "C" CRASH CUSHION (FLEAT-MT 37'-6")

ELEVATION



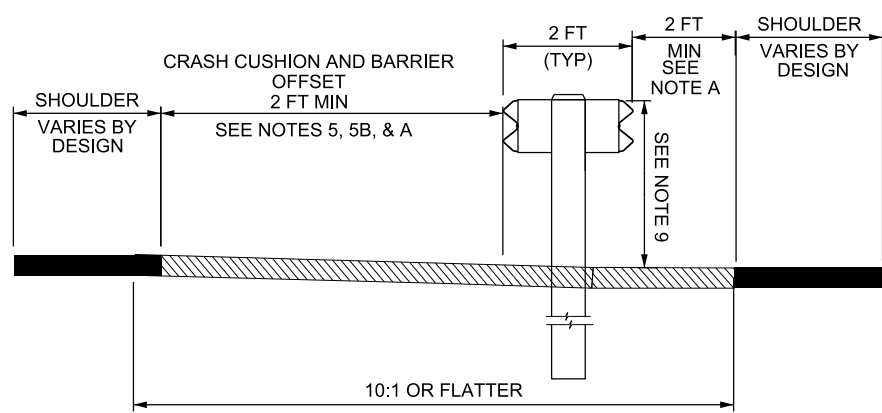
DESIGN-ONLY NOTES:

A. 2 FT MINIMUM BARRIER OFFSET IS OPTIONAL WHEN ROADWAY DESIGN REQUIRES A 12 FT OR WIDER EFFECTIVE SHOULDER.

NOTES:

1. THE FLEAT-MT, MANUFACTURED BY ROAD SYSTEMS INC., SEE GUIDELINES FOR CRASH CUSHIONS AND BARRIER END TREATMENTS FOR SPECIFIC SYSTEM DETAILS.
2. INSTALL SYSTEMS ACCORDING TO DEPARTMENTS'S AND MANUFACTURER'S SPECIFICATIONS.
3. HAVE SHOP DRAWING AVAILABLE ON SITE FOR REFERENCE DURING INSTALLATION.
4. USE GRADED AND COMPACTED SURFACE FOR FLEAT-MT SYSTEMS.
5. COMPLETE SLOPE PREPARATIONS PRIOR TO INSTALLING SYSTEM. MEET SLOPE REQUIREMENTS IN RECOVERY AREA AS DETAILED IN APPLICABLE UDOT ROADWAY DESIGN MANUAL DRAWINGS. THE ADDITIONAL INFORMATION LISTED BELOW IS THE MINIMUM ACCEPTABLE SLOPE REQUIREMENTS FOR APPROACH AND RECOVERY AREAS OF THIS CRASH CUSHION SYSTEM.
 - A. USE A 10:1 OR FLATTER FORESLOPE IN THE APPROACH AND RECOVERY AREAS WHEN SYSTEM IS BEING USED IN CONJUNCTION WITH CONCRETE BARRIER.
 - B. USE A 10:1 OR FLATTER FORESLOPE IN THE APPROACH AND RECOVERY AREA WHEN SYSTEM IS BEING USED IN CONJUNCTION WITH W-BEAM.
6. CLEAR RECOVERY AND APPROACH AREAS OF ANY FIXED OBJECTS. DO NOT PLACE SIGNS OR POSTS IN APPROACH AREA. SIGNS OR POSTS PLACED IN THE RECOVERY AREA WILL BE BREAKAWAY AND AND BE A MINIMUM 10 FT FROM SYSTEM RAIL ELEMENTS.
7. INSTALL REQUIRED MARKINGS ACCORDING TO STD DWG CC 1 AND THIS DRAWING.
8. REFER TO BA 4 SERIES STD DWGS FOR MEDIAN BARRIER TRANSITION.
9. ADJUST W-BEAM BARRIER OR W-BEAM MEDIAN BARRIER TRANSITION HEIGHT FROM 30 INCHES TO 28 INCHES OVER A LENGTH OF 25 FT FOR ATTACHMENT TO THE FLEAT MT SYSTEM.

W-BEAM GUARDRAIL BARRIER INSTALLATION DETAIL



SECTION A-A

MEDIAN APPLICATION USE WHEN SLOPES ARE 10:1 OR FLATTER ACROSS MEDIAN WIDTH

SUPPLEMENTAL DRAWING

REVISIONS

NO.	DATE	APPR.	REMARKS

UTAH DEPARTMENT OF TRANSPORTATION
STANDARD DRAWINGS FOR ROAD AND BRIDGE CONSTRUCTION
SALT LAKE CITY, UTAH

RECOMMENDED FOR APPROVAL

Randall A. [Signature]
CHAIRMAN STANDARDS COMMITTEE
APPROVED

DEPUTY DIRECTOR

DATE: AUG 30, 2018

GRADING AND
PLACEMENT DETAILS
CRASH CUSHION
TYPE C
FLEAT-MT

STD. DWG. NO.
CC 5B