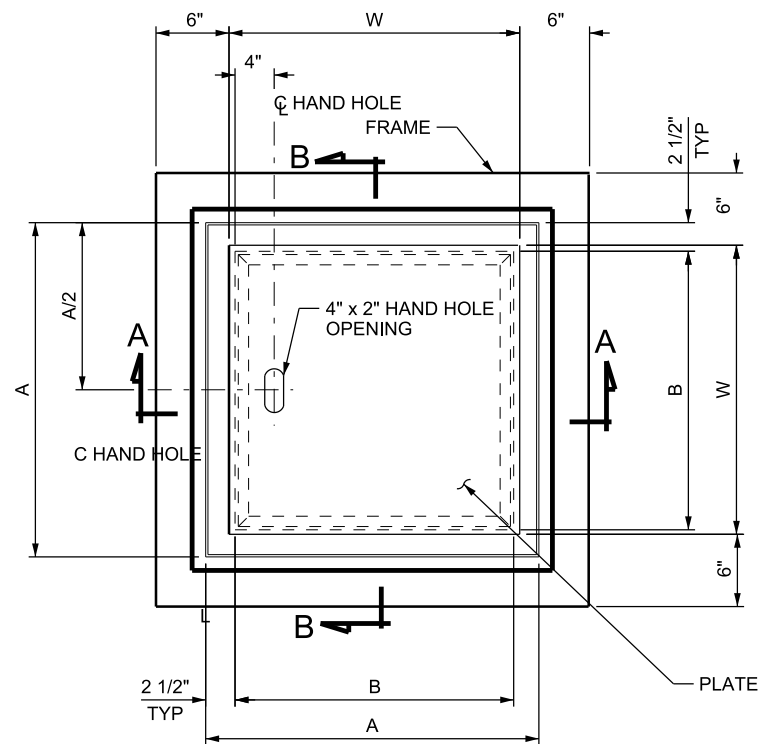
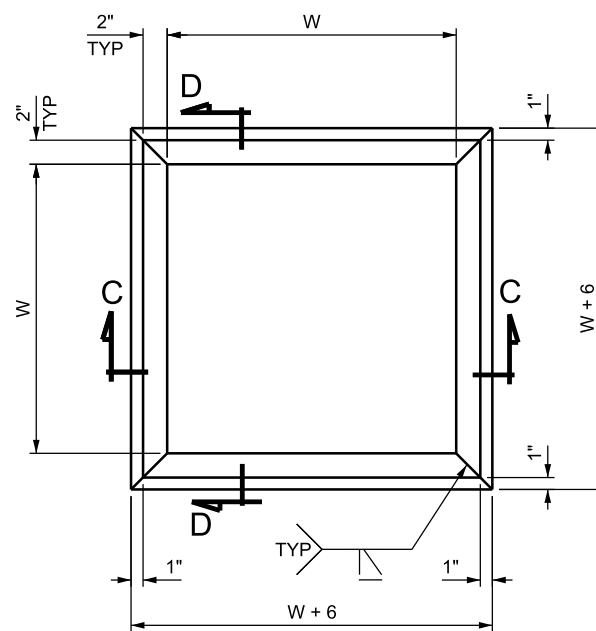


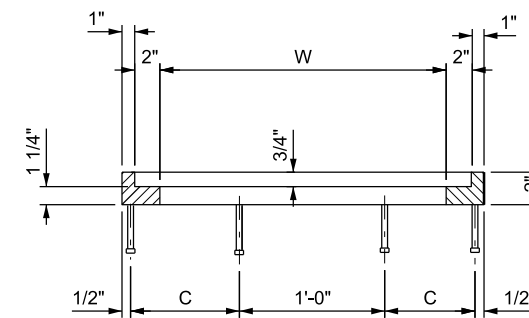
12-SEP-2018 DGN File: D:\StandardSpecs\Section\207\Section\All Supp Issues\Issue 6 08-30-2018\Drawings\DB01C.dgn



**COVER PLAN**

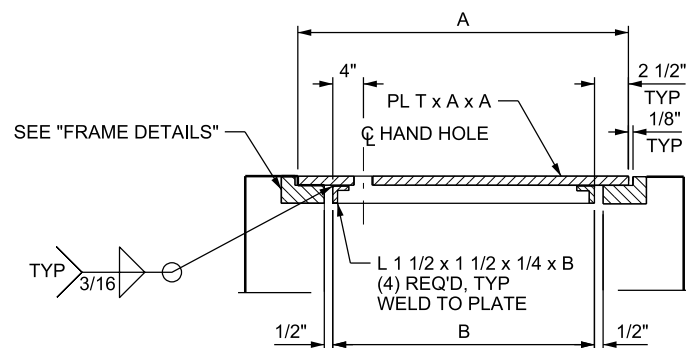


**PLAN**

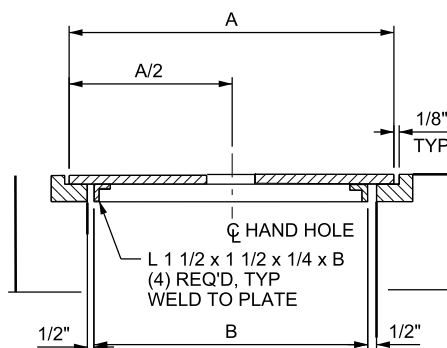


**SECTION C-C or D-D**

**FRAME DETAILS**



**SECTION A-A**



**SECTION B-B**

DIMENSIONS					QUANTITIES (LB)		
W	A	B	C	T	COVER	FRAME	TOTAL
2'-0"	2'-3 3/4"	1'-10 3/4"	8 1/2"	1/2"	131	163	294
2'-6"	2'-9 3/4"	2'-4 3/4"	11 1/2"	5/8"	189	195	384

**DESIGN DATA**

STRUCTURAL STEEL:  $F_y = 36,000$  psi

**NOTES:**

- ALL STRUCTURAL STEEL: STRUCTURAL CARBON STEEL CONFORMING TO AASHTO M 270, GRADE 36, AND HOT DIP GALVANIZE AFTER FABRICATION IN ACCORDANCE WITH ASTM A 123.
- USE SOLID COVER ONLY IN APPLICATIONS THAT WILL NOT CARRY TRAFFIC.

**SUPPLEMENTAL DRAWING**

NO.	DATE	APPR.	REMARKS
1	8/30/2018	JGE	REMOVED DESIGN INFORMATION FROM THE DRAWING.

UTAH DEPARTMENT OF TRANSPORTATION  
STANDARD DRAWINGS FOR ROAD AND BRIDGE CONSTRUCTION  
SALT LAKE CITY, UTAH

RECOMMENDED FOR APPROVAL  
*Randy L. Park*  
CHAIRMAN STANDARDS COMMITTEE  
DATE: AUG. 30, 2018

APPROVED  
*[Signature]*  
DEPUTY DIRECTOR  
DATE: AUG. 30, 2018

SOLID COVER FOR  
STD DWG DB 1

STD. DWG. NO.  
DB 1G

STANDARD DRAWING TITLE