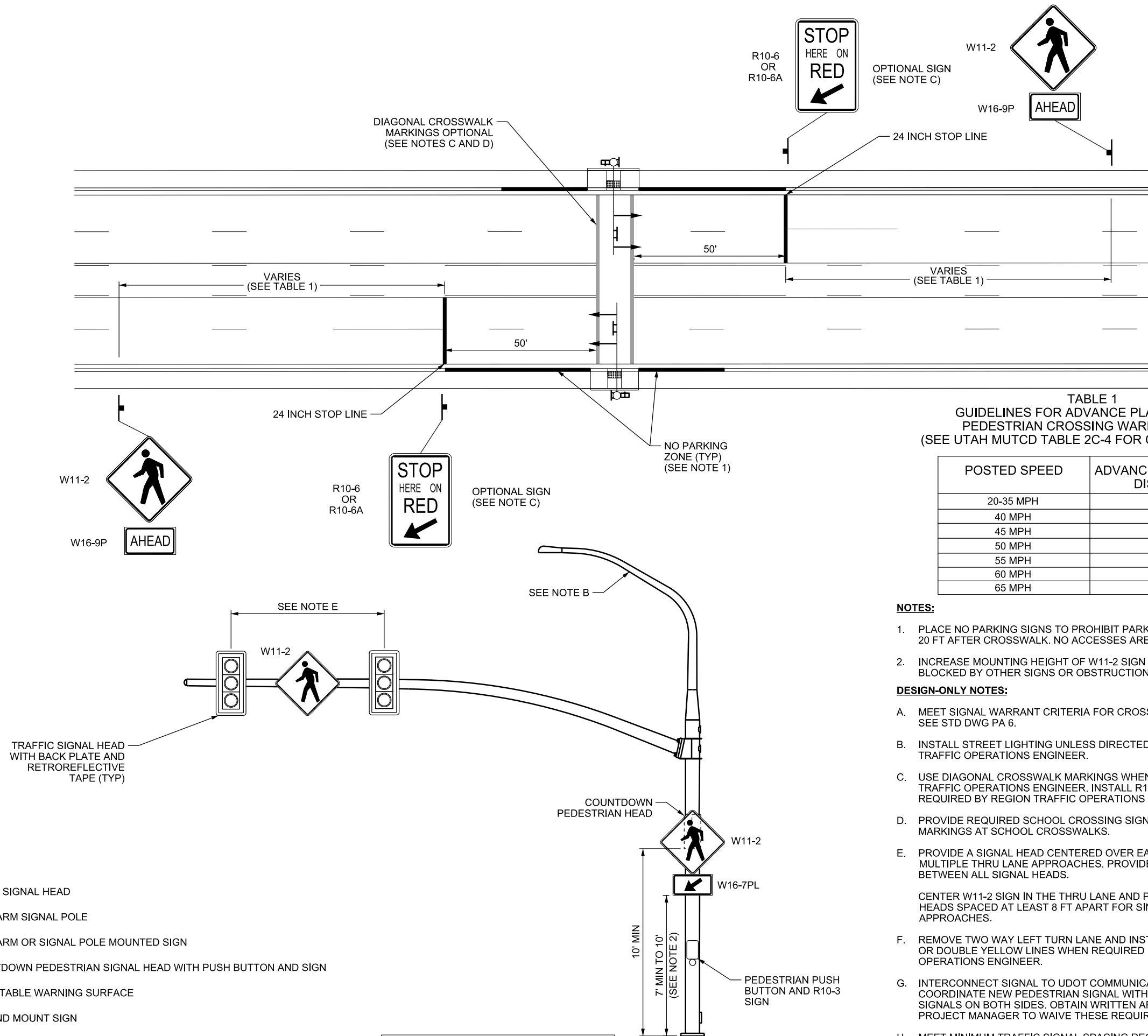


12-SEP-2018 DGN File: D:\Standard\Spec\Section\2017\Section\All_Supp_Issues\Issue 6 08-30-2018\Drawings\SL06B.dgn

LEGEND

- TYPE 1 SIGNAL HEAD
- MAST ARM SIGNAL POLE
- † MAST ARM OR SIGNAL POLE MOUNTED SIGN
- Ⓜ COUNTDOWN PEDESTRIAN SIGNAL HEAD WITH PUSH BUTTON AND SIGN
- ▣ DETECTABLE WARNING SURFACE
- ⊥ GROUND MOUNT SIGN



SUPPLEMENTAL DRAWING

TABLE 1
GUIDELINES FOR ADVANCE PLACEMENT OF PEDESTRIAN CROSSING WARNING SIGNS
(SEE UTAH MUTCD TABLE 2C-4 FOR COMPLETE TABLE)

POSTED SPEED	ADVANCE PLACEMENT DISTANCE
20-35 MPH	100 FT
40 MPH	125 FT
45 MPH	175 FT
50 MPH	250 FT
55 MPH	325 FT
60 MPH	400 FT
65 MPH	475 FT

NOTES:

1. PLACE NO PARKING SIGNS TO PROHIBIT PARKING 50 FT BEFORE AND 20 FT AFTER CROSSWALK. NO ACCESSES ARE ALLOWED IN THIS AREA.
2. INCREASE MOUNTING HEIGHT OF W11-2 SIGN AND W16-7PL PLAQUE IF BLOCKED BY OTHER SIGNS OR OBSTRUCTIONS.

DESIGN-ONLY NOTES:

- A. MEET SIGNAL WARRANT CRITERIA FOR CROSSWALK INSTALLATION. SEE STD DWG PA 6.
- B. INSTALL STREET LIGHTING UNLESS DIRECTED OTHERWISE BY REGION TRAFFIC OPERATIONS ENGINEER.
- C. USE DIAGONAL CROSSWALK MARKINGS WHEN REQUIRED BY REGION TRAFFIC OPERATIONS ENGINEER. INSTALL R10-6 OR R10-6A SIGNS WHEN REQUIRED BY REGION TRAFFIC OPERATIONS ENGINEER.
- D. PROVIDE REQUIRED SCHOOL CROSSING SIGNING AND PAVEMENT MARKINGS AT SCHOOL CROSSWALKS.
- E. PROVIDE A SIGNAL HEAD CENTERED OVER EACH THRU LANE FOR MULTIPLE THRU LANE APPROACHES. PROVIDE W11-2 SIGN CENTERED BETWEEN ALL SIGNAL HEADS.

CENTER W11-2 SIGN IN THE THRU LANE AND PROVIDE TWO SIGNAL HEADS SPACED AT LEAST 8 FT APART FOR SINGLE THRU LANE APPROACHES.
- F. REMOVE TWO WAY LEFT TURN LANE AND INSTALL A RAISED MEDIAN OR DOUBLE YELLOW LINES WHEN REQUIRED BY REGION TRAFFIC OPERATIONS ENGINEER.
- G. INTERCONNECT SIGNAL TO UDOT COMMUNICATIONS NETWORK. COORDINATE NEW PEDESTRIAN SIGNAL WITH ADJACENT TRAFFIC SIGNALS ON BOTH SIDES. OBTAIN WRITTEN APPROVAL FROM ATMS PROJECT MANAGER TO WAIVE THESE REQUIREMENTS.
- H. MEET MINIMUM TRAFFIC SIGNAL SPACING REQUIREMENTS.
- I. FOLLOW SIGNALIZED INTERSECTION DESIGN GUIDELINES.

REVISIONS

NO.	DATE	APPR.	REMARKS

UTAH DEPARTMENT OF TRANSPORTATION
STANDARD DRAWINGS FOR ROAD AND BRIDGE CONSTRUCTION
SALT LAKE COUNTY, UTAH

RECOMMENDED FOR APPROVAL
Randy St. John
CHAIRMAN STANDARDS COMMITTEE
APPROVED
DATE: AUG 30, 2018
DEPUTY DIRECTOR

PEDESTRIAN SIGNAL CROSSWALK

STD. DWG. NO.
SL 6B

STANDARD DRAWING TITLE