

12-SEP-2018 DGN File: D:\StandardSpecSection\2017\Section\All_Supp_Issues\Issue - 6 08-30-2018\Drawings\SL06C.dgn

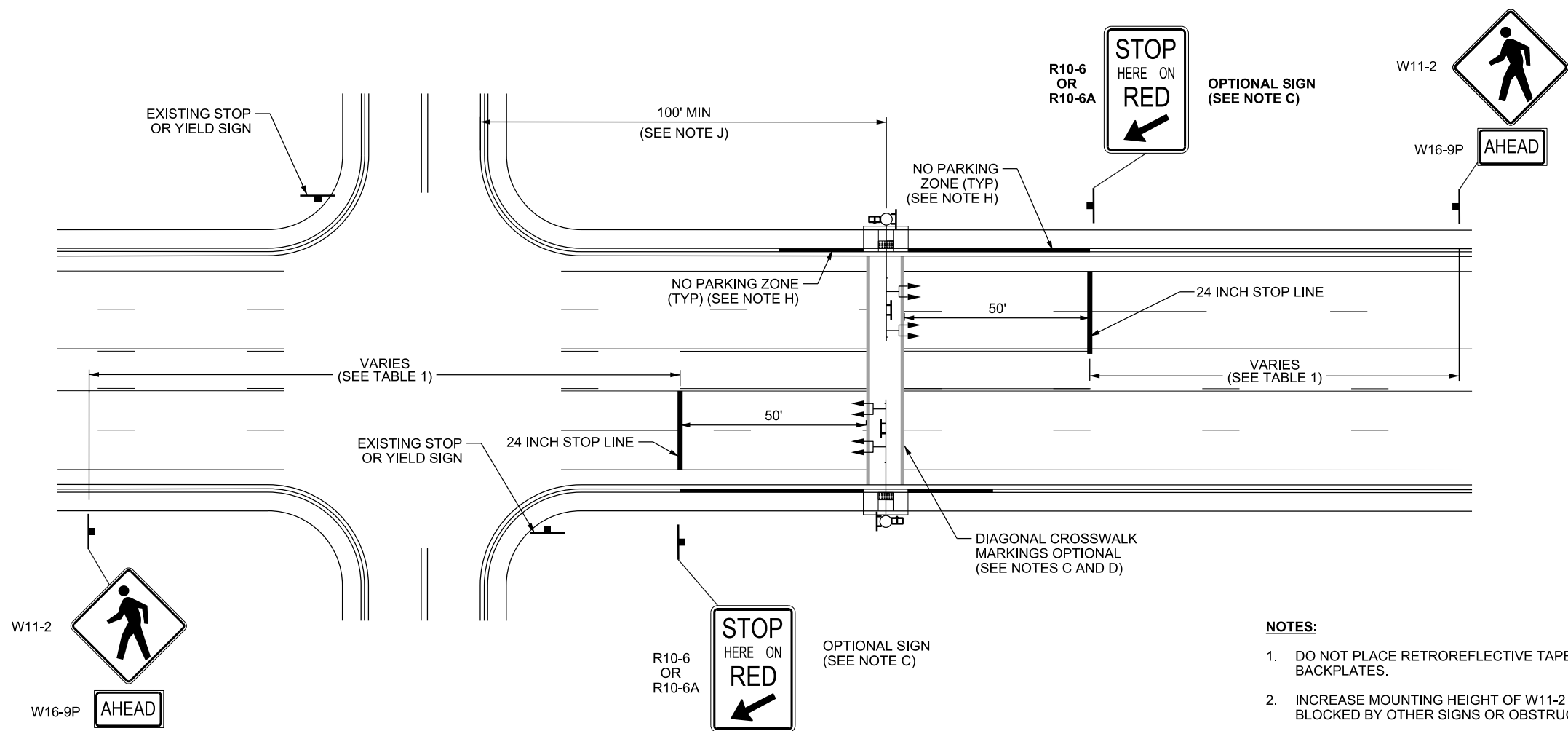
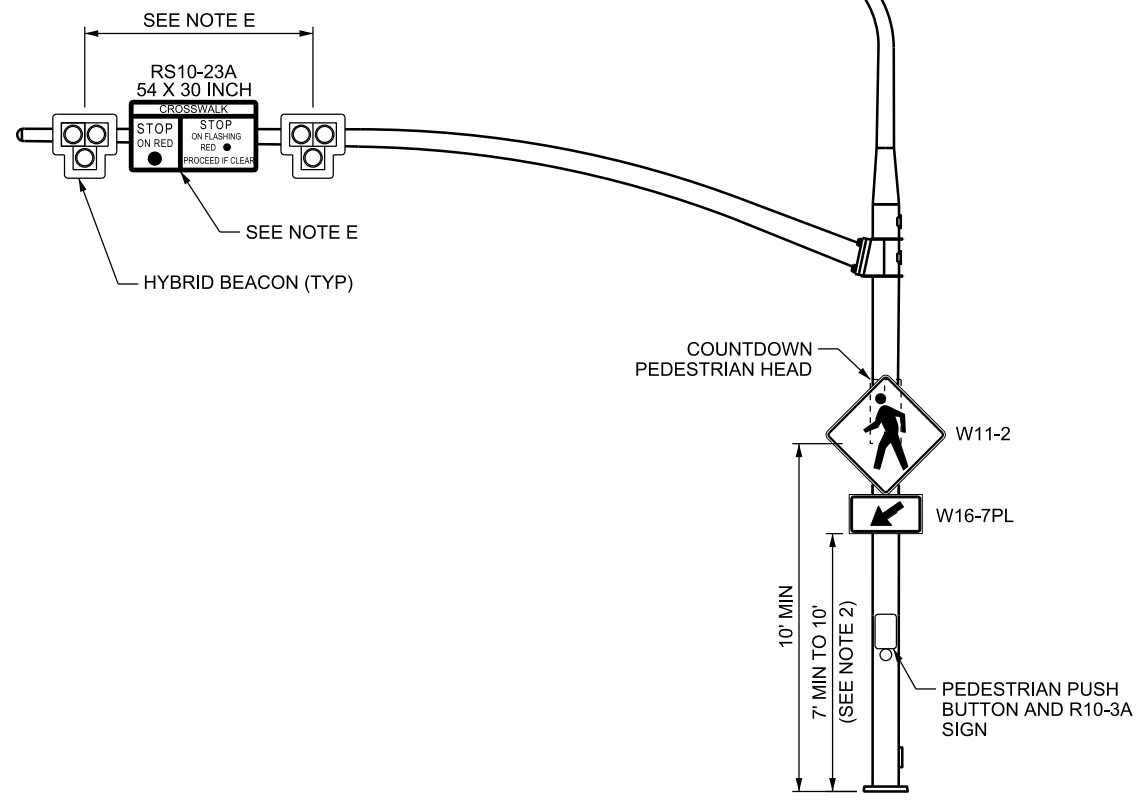


TABLE 1
GUIDELINES FOR ADVANCE PLACEMENT OF PEDESTRIAN CROSSING WARNING SIGNS
(SEE UTAH MUTCD TABLE 2C-4 FOR COMPLETE TABLE)

POSTED SPEED	MINIMUM ADVANCE PLACEMENT DISTANCE
20-35 MPH	100 FT
40 MPH	125 FT
45 MPH	175 FT
50 MPH	250 FT
55 MPH	325 FT
60 MPH	400 FT
65 MPH	475 FT

- LEGEND**
- 12" DIAMETER HYBRID BEACON
 - MAST ARM SIGNAL POLE
 - MAST ARM OR SIGNAL POLE MOUNTED SIGN
 - COUNTDOWN PEDESTRIAN SIGNAL HEAD WITH PUSH BUTTON AND SIGN
 - DETECTABLE WARNING SURFACE
 - GROUND MOUNT SIGN



NOTES:

1. DO NOT PLACE RETROREFLECTIVE TAPE ON HYBRID BEACON BACKPLATES.
2. INCREASE MOUNTING HEIGHT OF W11-2 SIGN AND W16-7PL PLAQUE IF BLOCKED BY OTHER SIGNS OR OBSTRUCTIONS.

DESIGN-ONLY NOTES:

- A. MEET PEDESTRIAN HYBRID BEACON SIGNAL GUIDELINES. SEE STD DWG PA 6.
- B. INSTALL STREET LIGHTING UNLESS DIRECTED OTHERWISE BY REGION TRAFFIC OPERATIONS ENGINEER.
- C. USE DIAGONAL CROSSWALK MARKINGS WHEN REQUIRED BY REGION TRAFFIC OPERATIONS ENGINEER. INSTALL R10-6 OR R10-6A SIGNS WHEN REQUIRED BY REGION TRAFFIC OPERATIONS ENGINEER.
- D. PROVIDE REQUIRED SCHOOL CROSSING SIGNING AND PAVEMENT MARKINGS AT SCHOOL CROSSWALKS.
- E. CENTER HYBRID BEACON IN EACH THRU LANE. PROVIDE RS10-23A SIGN CENTERED BETWEEN ALL HYBRID BEACONS. FOR SINGLE THRU LANE APPROACHES, CENTER RS10-23A SIGN IN THE LANE AND SPACE HYBRID BEACONS AT LEAST 10 FT APART.
- F. REMOVE TWO WAY LEFT TURN LANE AND INSTALL A RAISED MEDIAN OR DOUBLE YELLOW LINES WHEN REQUIRED BY REGION TRAFFIC OPERATIONS ENGINEER.
- G. INTERCONNECT SIGNAL TO UDOT COMMUNICATIONS NETWORK. COORDINATE NEW PEDESTRIAN HYBRID BEACON WITH ADJACENT TRAFFIC SIGNALS ON BOTH SIDES. OBTAIN WRITTEN APPROVAL FROM ATMS PROJECT MANAGER TO WAIVE THESE REQUIREMENTS.
- H. PLACE NO PARKING SIGNS TO PROHIBIT PARKING 50 FT BEFORE AND 20 FT AFTER CROSSWALK. NO ACCESSES ARE ALLOWED IN THIS AREA.
- I. MEET MINIMUM TRAFFIC SIGNAL SPACING REQUIREMENTS.
- J. INSTALL THE PEDESTRIAN HYBRID BEACON AT LEAST 100 FT FROM SIDE STREETS AND DRIVEWAYS THAT ARE CONTROLLED BY STOP OR YIELD SIGNS. DO NOT INSTALL IN LEFT TURN LANE, STORAGE, GAP, OR DECELERATION AREAS. DO NOT INSTALL IN POTENTIAL FUTURE LEFT TURN LANE IF CURRENTLY MARKED AS A TWO WAY LEFT TURN LANE.
- K. PLACE HYBRID BEACON ASSEMBLIES ON A SINGLE OR TWO SEPARATE MAST ARMS.

REVISIONS

NO.	DATE	APPR.	REMARKS

UTAH DEPARTMENT OF TRANSPORTATION
STANDARD DRAWINGS FOR ROAD AND BRIDGE CONSTRUCTION
SALT LAKE CITY, UTAH

RECOMMENDED FOR APPROVAL
[Signature]
CHAIRMAN STANDARDS COMMITTEE
APPROVED
DATE: AUG 30, 2018
DEPUTY DIRECTOR

PEDESTRIAN HYBRID BEACON CROSSWALK (HAWK)

STANDARD DRAWING TITLE

STD. DWG. NO. SL 6C

SUPPLEMENTAL DRAWING