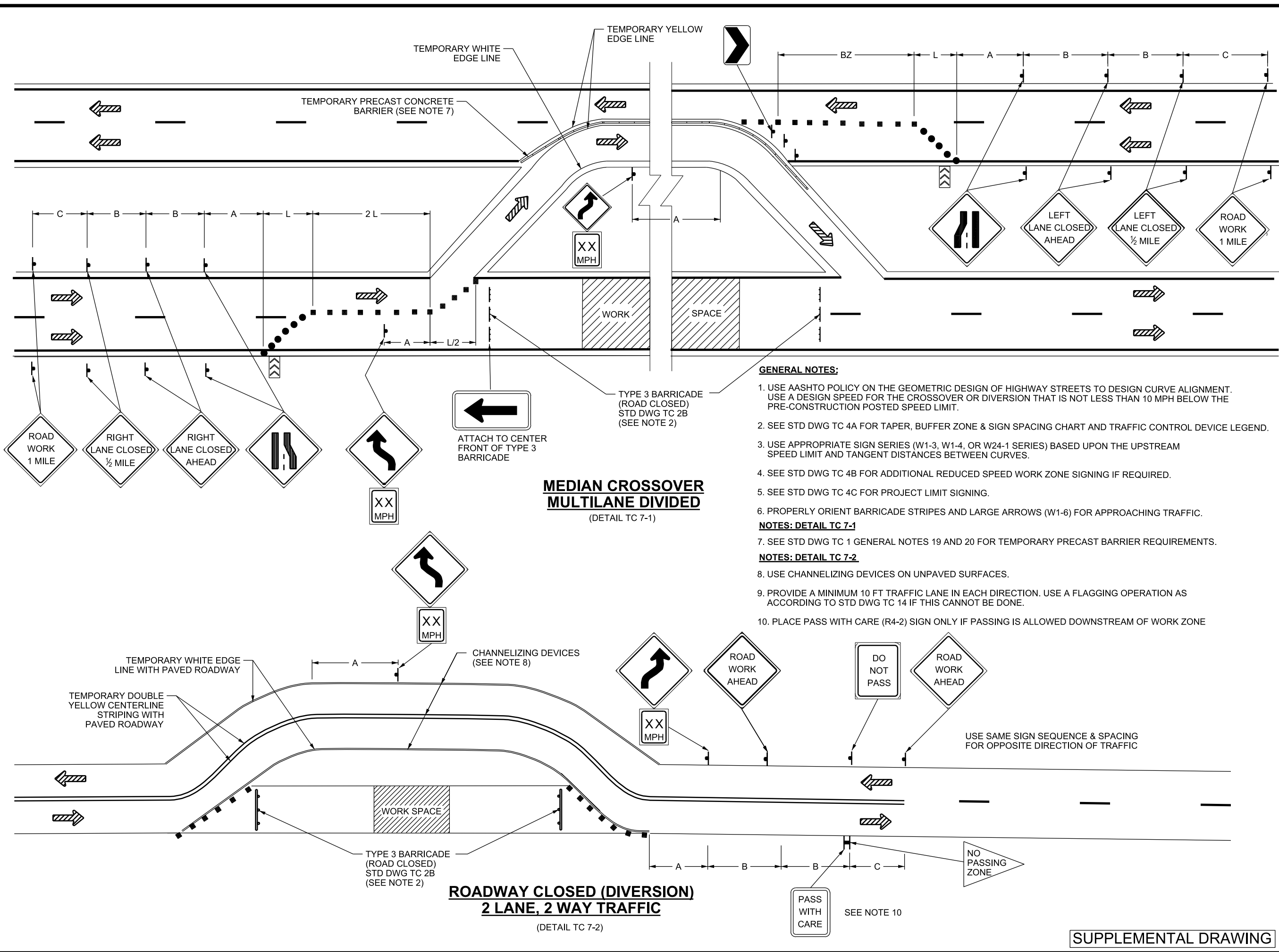


09-JUL-2018 DGN File: D:\StandardSpec\Section\2017\Section\All\_Supp\_Issues\Issue 5 06-28-2018\Drawings\TC07.dgn



**MEDIAN CROSSOVER  
MULTILANE DIVIDED**  
(DETAIL TC 7-1)

**ROADWAY CLOSED (DIVERSION)  
2 LANE, 2 WAY TRAFFIC**  
(DETAIL TC 7-2)

**GENERAL NOTES:**

1. USE AASHTO POLICY ON THE GEOMETRIC DESIGN OF HIGHWAY STREETS TO DESIGN CURVE ALIGNMENT. USE A DESIGN SPEED FOR THE CROSSOVER OR DIVERSION THAT IS NOT LESS THAN 10 MPH BELOW THE PRE-CONSTRUCTION POSTED SPEED LIMIT.
  2. SEE STD DWG TC 4A FOR TAPER, BUFFER ZONE & SIGN SPACING CHART AND TRAFFIC CONTROL DEVICE LEGEND.
  3. USE APPROPRIATE SIGN SERIES (W1-3, W1-4, OR W24-1 SERIES) BASED UPON THE UPSTREAM SPEED LIMIT AND TANGENT DISTANCES BETWEEN CURVES.
  4. SEE STD DWG TC 4B FOR ADDITIONAL REDUCED SPEED WORK ZONE SIGNING IF REQUIRED.
  5. SEE STD DWG TC 4C FOR PROJECT LIMIT SIGNING.
  6. PROPERLY ORIENT BARRICADE STRIPES AND LARGE ARROWS (W1-6) FOR APPROACHING TRAFFIC.
- NOTES: DETAIL TC 7-1**
7. SEE STD DWG TC 1 GENERAL NOTES 19 AND 20 FOR TEMPORARY PRECAST BARRIER REQUIREMENTS.
- NOTES: DETAIL TC 7-2**
8. USE CHANNELIZING DEVICES ON UNPAVED SURFACES.
  9. PROVIDE A MINIMUM 10 FT TRAFFIC LANE IN EACH DIRECTION. USE A FLAGGING OPERATION AS ACCORDING TO STD DWG TC 14 IF THIS CANNOT BE DONE.
  10. PLACE PASS WITH CARE (R4-2) SIGN ONLY IF PASSING IS ALLOWED DOWNSTREAM OF WORK ZONE

REVISIONS	
NO.	DATE
1	6/28/18
	RT UPDATED NOTE 7.

**UTAH DEPARTMENT OF TRANSPORTATION**  
STANDARD DRAWINGS FOR ROAD AND BRIDGE CONSTRUCTION  
SALT LAKE CITY, UTAH

RECOMMENDED FOR APPROVAL  
  
 RANDALL S. PUGH  
 CHAIRMAN STANDARDS COMMITTEE  
 APPROVED

DATE: JUNE 28, 2018  
 DATE: JUNE 28, 2018

DEPUTY DIRECTOR

**MEDIAN CROSSOVER AND  
2-LANE, 2-WAY  
DIVERSION**

STANDARD DRAWING TITLE

STD. DWG. NO. **TC 7**

**SUPPLEMENTAL DRAWING**