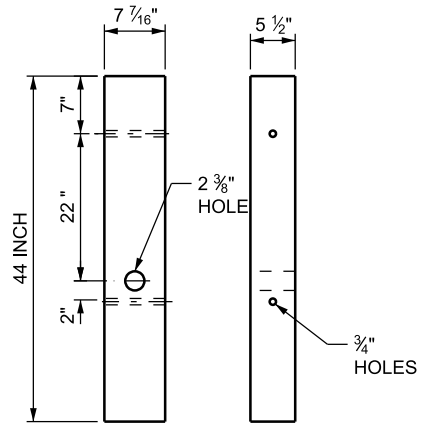
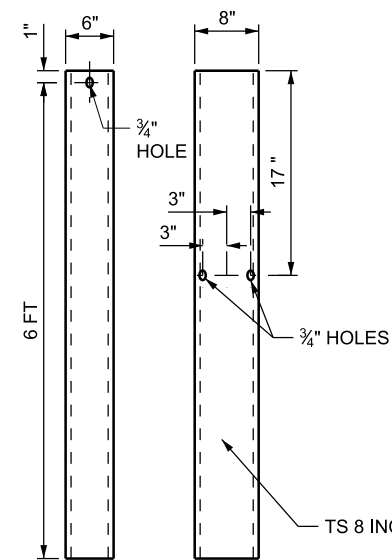


RAIL ELEMENT

SEE NOTE 1

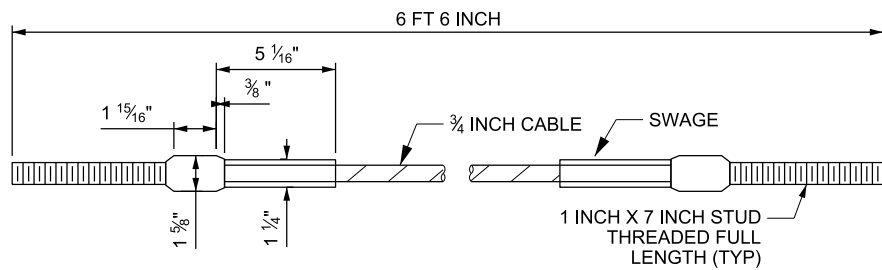


WOOD BREAKAWAY POST

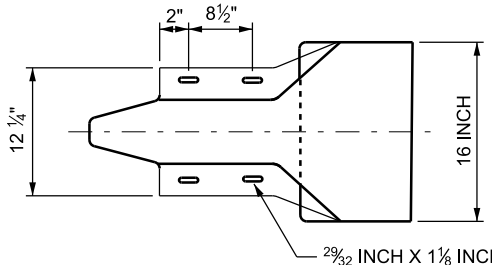


FOUNDATION TUBE

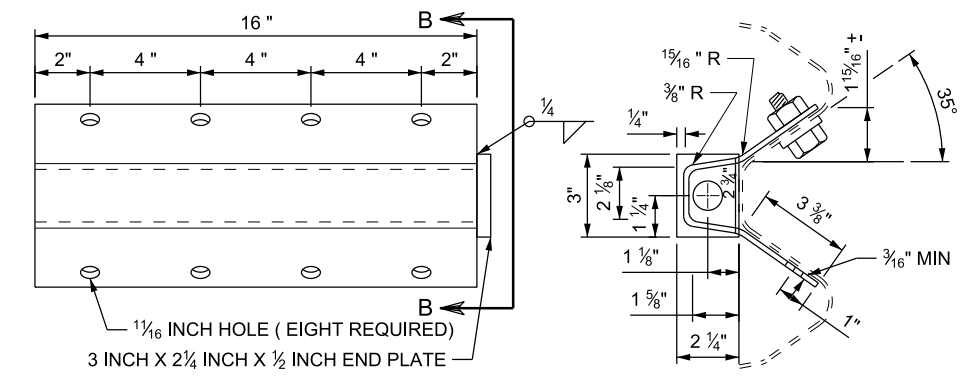
SEE NOTE 1



CABLE ANCHOR ASSEMBLY



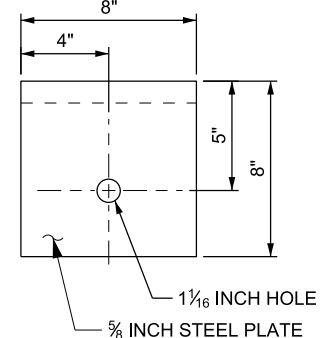
END SECTION (ROUNDED)



ELEVATION

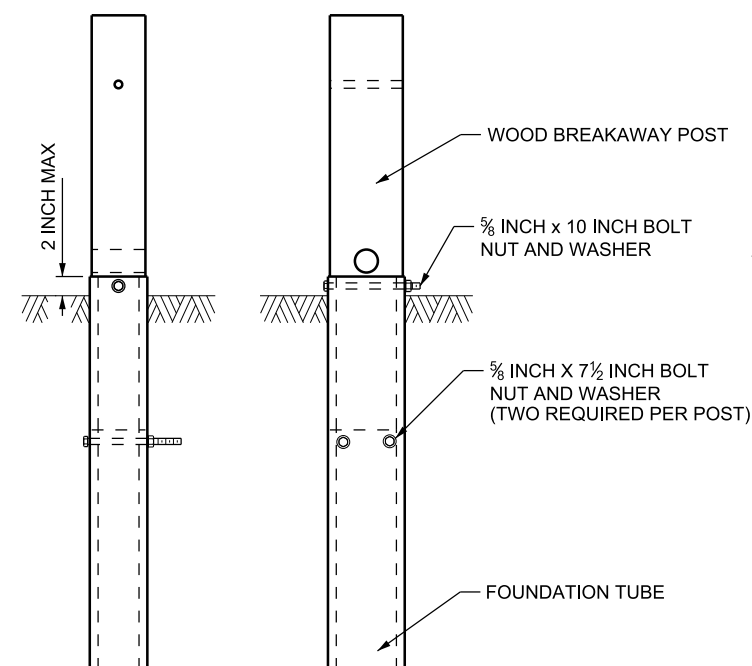
ANCHOR BRACKET

1 1/16 INCH X 1 INCH X 8 INCH PLATE
TACK WELD TO 3/8 INCH PLATE

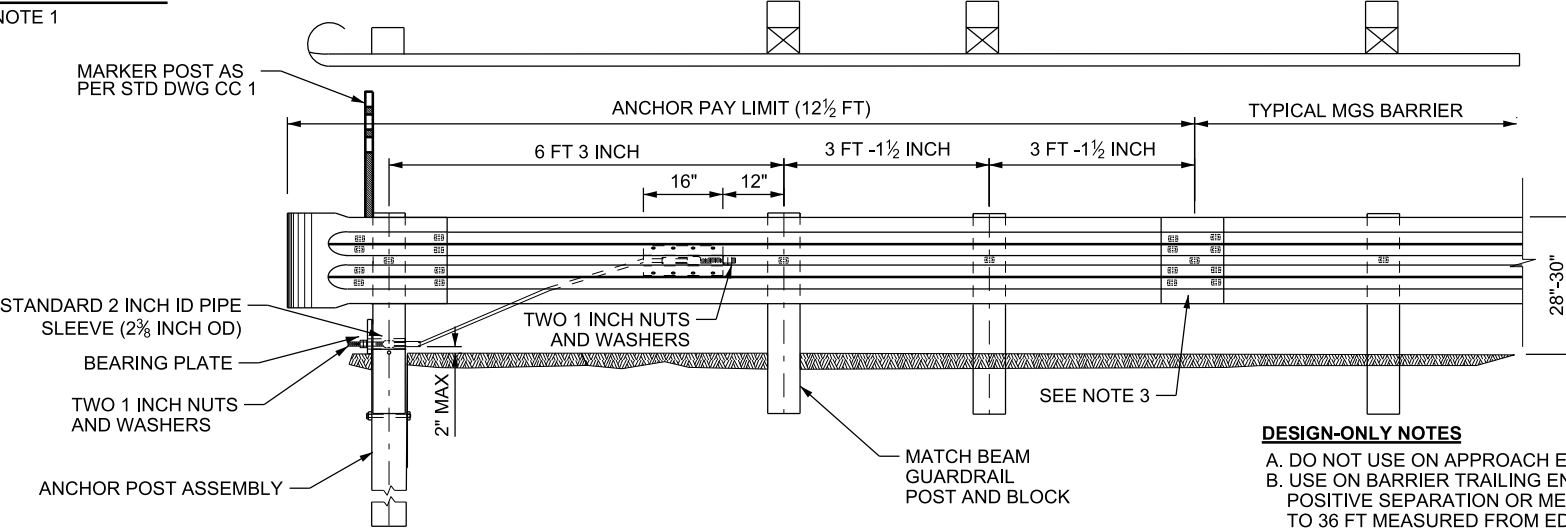


BEARING PLATE

NOTE:
INSTALL BEARING PLATE WITH
5 INCH PORTION UP. SECURE PLATE
TO POST USING TWO NAILS AT
TOP OF PLATE.



ANCHOR POST ASSEMBLY



W-BEAM ANCHOR INSTALLATION

DESIGN-ONLY NOTES

- A. DO NOT USE ON APPROACH END.
- B. USE ON BARRIER TRAILING END ON DIVIDED ROADWAYS WITH A POSITIVE SEPARATION OR MEDIAN WIDTH GREATER THAN OR EQUAL TO 36 FT MEASURED FROM EDGE OF TRAVEL LANE TO EDGE OF TRAVEL LANE WHEN BARRIER END IS OUTSIDE THE MAXIMUM REQUIRED CLEAR ZONE AS DEFINED IN THE UDOT ROADWAY DESIGN MANUAL AND THE AASHTO ROADSIDE DESIGN GUIDE.

NOTES:

- 1. MANUFACTURE ACCORDING TO AASHTO GUIDE TO STANDARDIZED HIGHWAY BARRIER HARDWARE.
- 2. INSTALL SPLICE BOLTS ONLY WITHIN THE MID-SPAN SPLICE JOINT. DO NOT INSTALL CENTER BOLT.
- 3. USE WITH W-BEAM GUARDRAIL CURVED BREAKAWAY ONLY.

NO.	DATE	APPR.	REMARKS
1	10/26/2017	SDD	CORRECTED SLOT CALL OUTS TO MEET AASHTO M180. CORRECTED END SECTION ANGLE OF CENTER CORRUGATION. DELETED NOTE 2 & RENUMBERED NOTES. ADDED NOTE 3. CHANGED TITLE & DWG. NO.

UTAH DEPARTMENT OF TRANSPORTATION
STANDARD DRAWINGS FOR ROAD AND BRIDGE CONSTRUCTION
SALT LAKE CITY, UTAH

RECOMMENDED FOR APPROVAL
Randy J. Park
CHAIRMAN STANDARDS COMMITTEE
APPROVED

DEPUTY DIRECTOR

DATE: AUG 30, 2018
DATE: AUG 30, 2018

CURVED GUARDRAIL ANCHOR

STANDARD DRAWING TITLE

SUPPLEMENTAL DRAWING

STD. DWG. NO.
BA 4G2

12-SEP-2018 DGN File: D:\StandardSpecSection\2017\Section\All Supp Issues\Issue 6 08-30-2018\Drawings\BA04G2.dgn