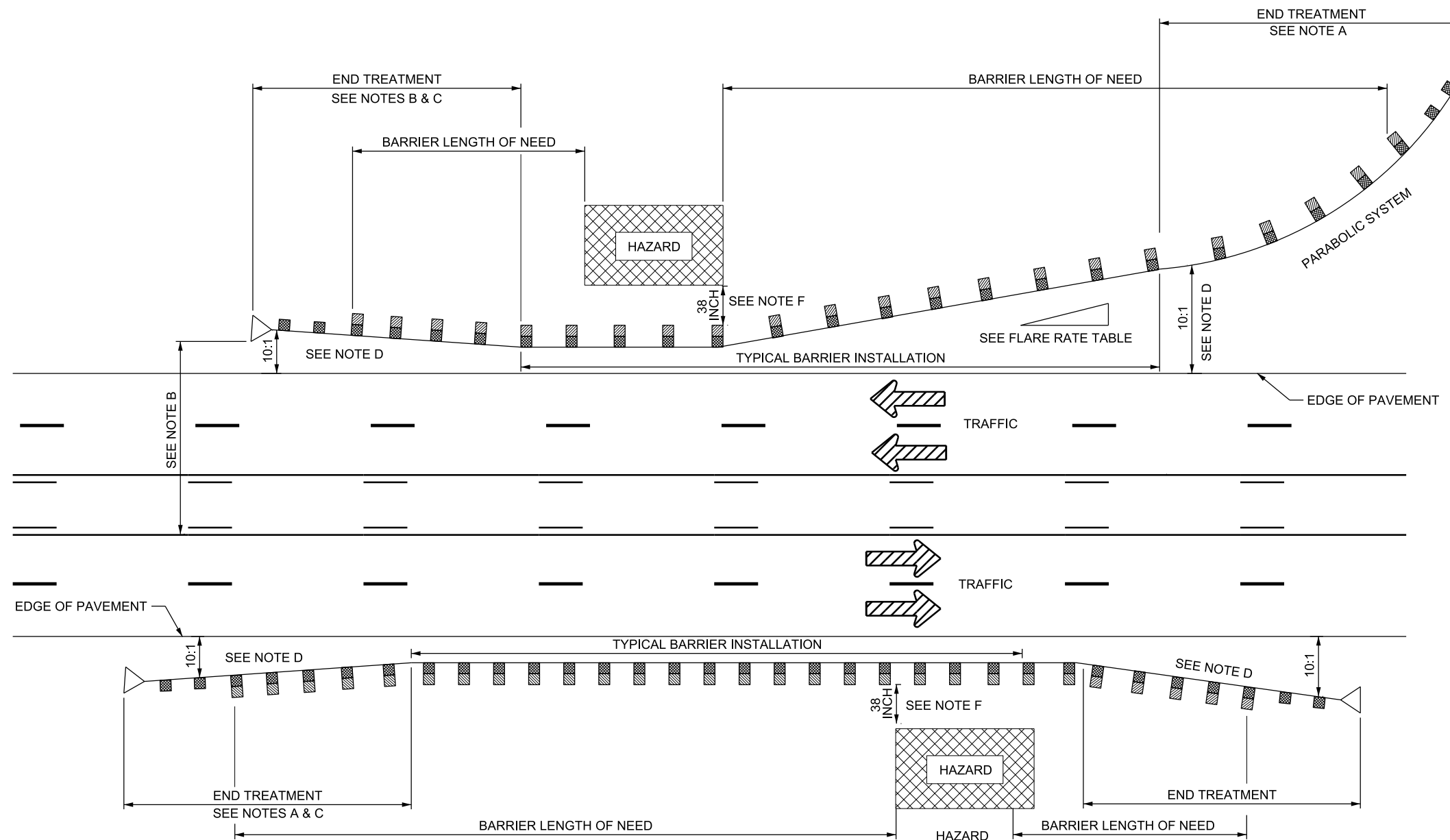


12-SEP-2018 DGN File: D:\StandardSpec\Section\2017\Section\All\_Supp\_Issues\Issue 6 08-38-2018\Drawings\BA04-12.dgn



FLARE RATE TABLE		
SPEED (MPH)	RATE OUTSIDE SHY LINE	* RATE INSIDE SHY LINE
≤ 35	7:1	13:1
40	8:1	16:1
45	10:1	18:1
50	11:1	21:1
55	12:1	24:1
60	14:1	26:1
65	15:1	30:1
≤ 70	15:1	30:1

\* DESIGN EXCEPTION REQUIRED

**DESIGN-ONLY NOTES**

- A. APPROACH END:  
USE AN APPROVED END TREATMENT, AS APPROVED IN THE GUIDELINES FOR CRASH CUSHION AND BARRIER END TREATMENTS OR A BURIED IN BACK SLOPE TERMINAL (BA 4F SERIES STD DWGS).
- B. TRAILING END:  
USE AN APPROVED END TREATMENT, AS APPROVED IN THE GUIDELINES FOR CRASH CUSHION AND BARRIER END TREATMENTS OR A BURIED IN BACK SLOPE TERMINAL (BA 4F SERIES STD DWGS ON DIVIDED ROADWAY WITHOUT POSITIVE SEPARATION).
- C. END TREATMENT SHOWN ARE FOR ILLUSTRATION. USE TYPE G ON TANGENT GUARDRAIL INSTALLATIONS.
- D. USES OF MGS W-BEAM GUARDRAIL AND END TREATMENT INSTALLATION PERMITTED ON A SLOPE NO STEEPER THAN 10:1. MATCH ROADWAY CROSS-SLOPE IF SUPERELEVATED MORE THAN 2 PERCENT. REFER TO BA 4D SERIES STD DWG.
- E. CONSULT GUIDELINES FOR CRASH CUSHIONS AND BARRIER END TREATMENTS, CC SERIES STD DWGS FOR PROPER END TREATMENT SELECTION AND INSTALLATION REQUIREMENTS.
- F. REFER TO STD DWG BA 4H3 FOR REDUCED DEFLECTION REQUIREMENTS WHEN 38 INCHES CANNOT BE MAINTAINED BEHIND W-BEAM GUARDRAIL POST TO FACE OF HAZARD. USE 42 INCHES DEFLECTION FOR INITIAL LONG POST 2:1 FILL SLOPE INSTALLATION WITH STANDARD POST SPACING.

SUPPLEMENTAL DRAWING

DESIGN-ONLY DRAWING

UTAH DEPARTMENT OF TRANSPORTATION  
STANDARD DRAWINGS FOR ROAD AND BRIDGE CONSTRUCTION  
SALT LAKE CITY, UTAH

RECOMMENDED FOR APPROVAL  
*Randy P. York*  
CHAIRMAN STANDARDS COMMITTEE  
APPROVED  
DEPUTY DIRECTOR

DATE: AUG 30, 2018  
DATE: AUG 30, 2018

MIDWEST 31 INCH W-BEAM  
GUARDRAIL  
TYPICAL  
MULTILANE ARTERIAL

STANDARD DRAWING TITLE

STD. DWG. NO.

BA 4J2

NO.	DATE	APPR.	REMARKS
1	10/26/2017	SDD	REPLACED ANCHOR TYPE II WITH AN END TREATMENT. CHANGED NOTE B, C, & D.

REVISIONS