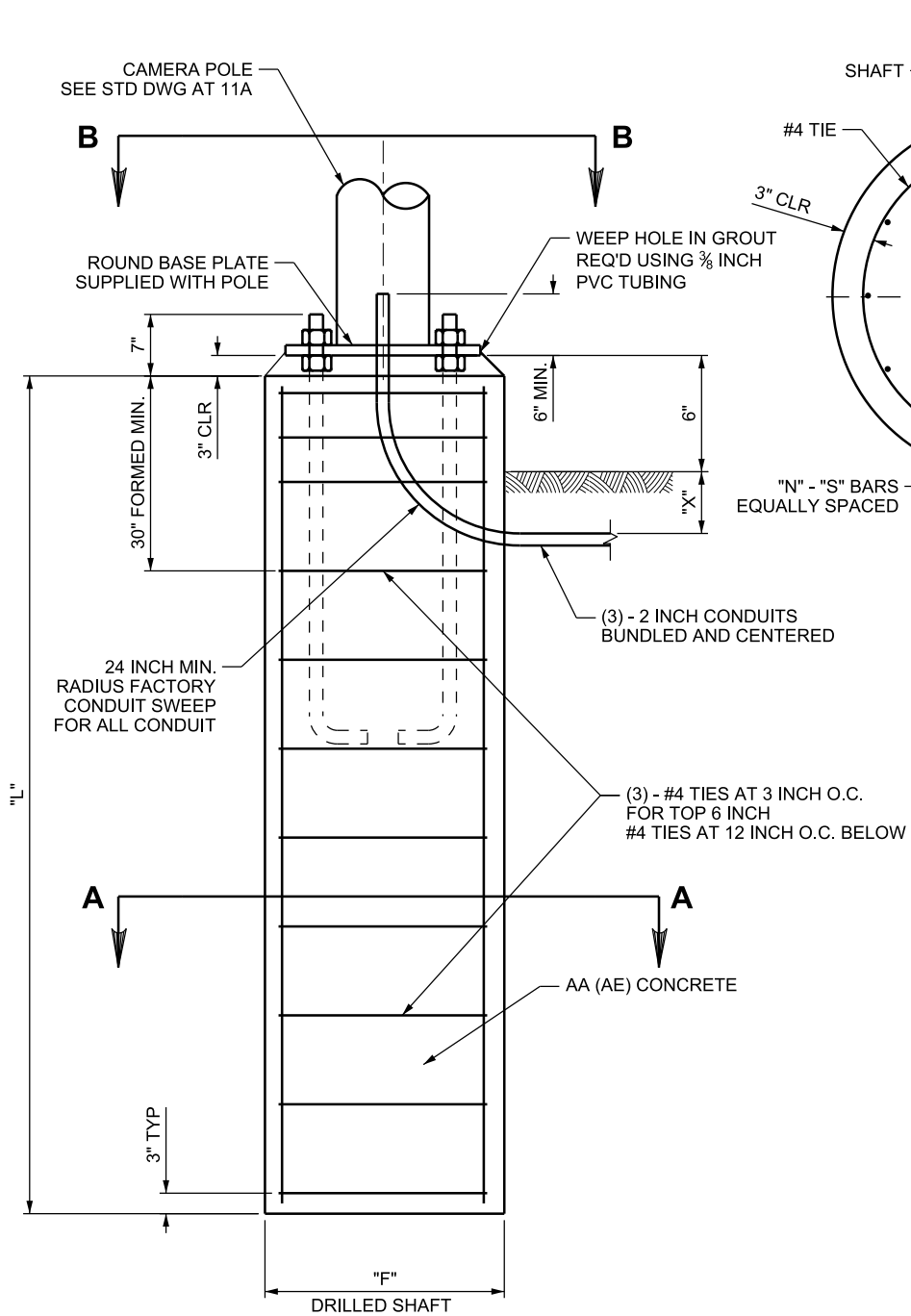


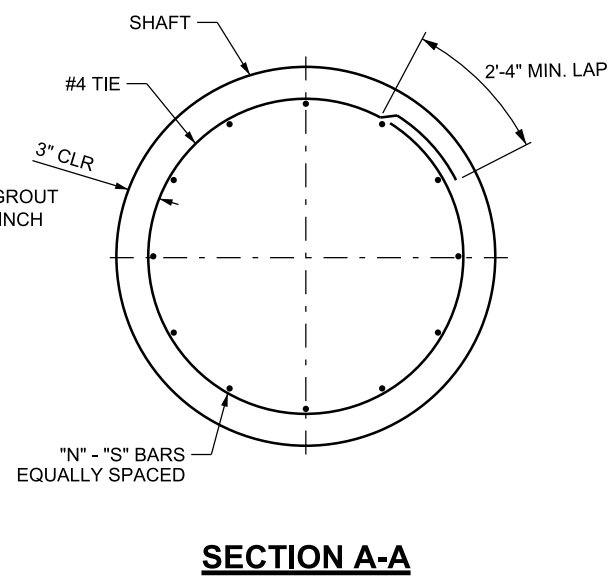
07-MAR-2018 DGN File: D:\StandardSpec\Section\2017\Section\All\_Supp\_Issues\Issue 4 02-22-2018\Drawings\AT 12.dgn



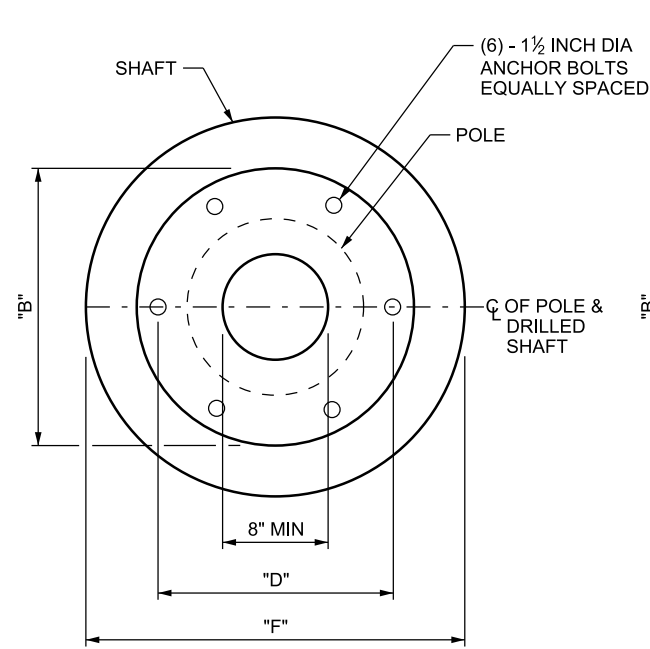
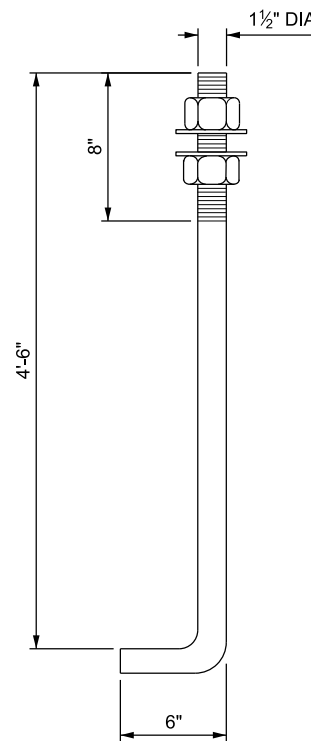
**TABLE 1 - CONDUIT DEPTH "X"**

18 INCH	IF ENTERING ADJACENT JUNCTION BOX
AS REQUIRED BY TABLE 2 OF STD DWG AT 6	IF NO ADJACENT JUNCTION BOX WITHIN 20 FEET OF POLE

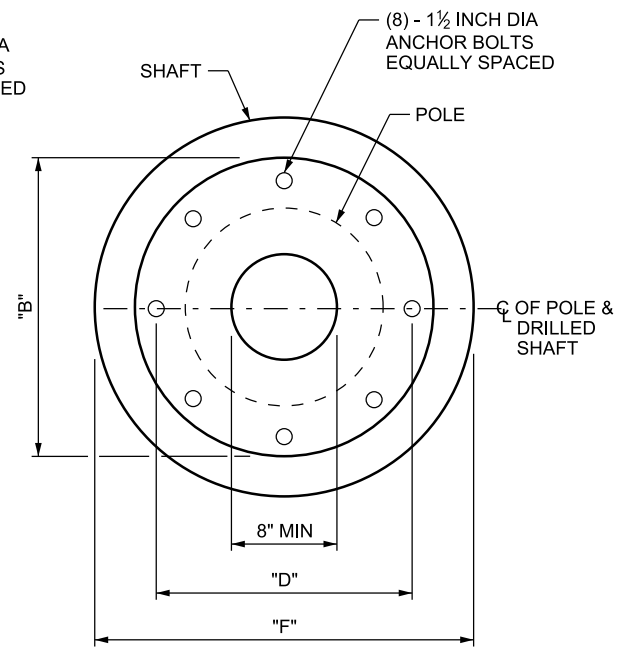
**(A) CCTV POLE FOUNDATION**



**(B) ANCHOR BOLT DETAIL**



**SECTION B-B FOR 45 FT POLES**



**SECTION B-B FOR 60 FT & 75 FT POLES**

**TABLE 2 - POLE FOUNDATION DIMENSIONS**

DESCRIPTION	"B"	"D"	"F"	"L"	"N"	"S"
45 FT CAMERA POLES	26"	22"	36"	10'-0"	12	#6
60 FT CAMERA LOWERING POLE	28"	24"	42"	11'-6"	16	#6
75 FT CAMERA LOWERING POLE	32"	28"	42"	15'-0"	16	#6

**NOTES:**

1. USE STEEL ANCHOR BOLT TEMPLATES, TOP AND BOTTOM.
2. REFER TO STANDARD SPECIFICATION 16530 GROUNDING REQUIREMENTS.

REVISIONS

NO.	DATE	APPR.	REMARKS
1	2/22/18	MA	CHANGE NOTE 3 - 2" CONDUITS

UTAH DEPARTMENT OF TRANSPORTATION  
STANDARD DRAWINGS FOR ROAD AND BRIDGE CONSTRUCTION  
SALT LAKE CITY, UTAH

RECOMMENDED FOR APPROVAL  
*Randall R. Page*  
CHAIRMAN STANDARDS COMMITTEE  
APPROVED  
DEPUTY DIRECTOR

DATE: FEB. 22, 2018  
DATE: FEB. 22, 2018

CCTV FOUNDATIONS FOR CCTV POLES

STANDARD DRAWING TITLE

STD. DWG. NO.

AT 12

SUPPLEMENTAL DRAWING