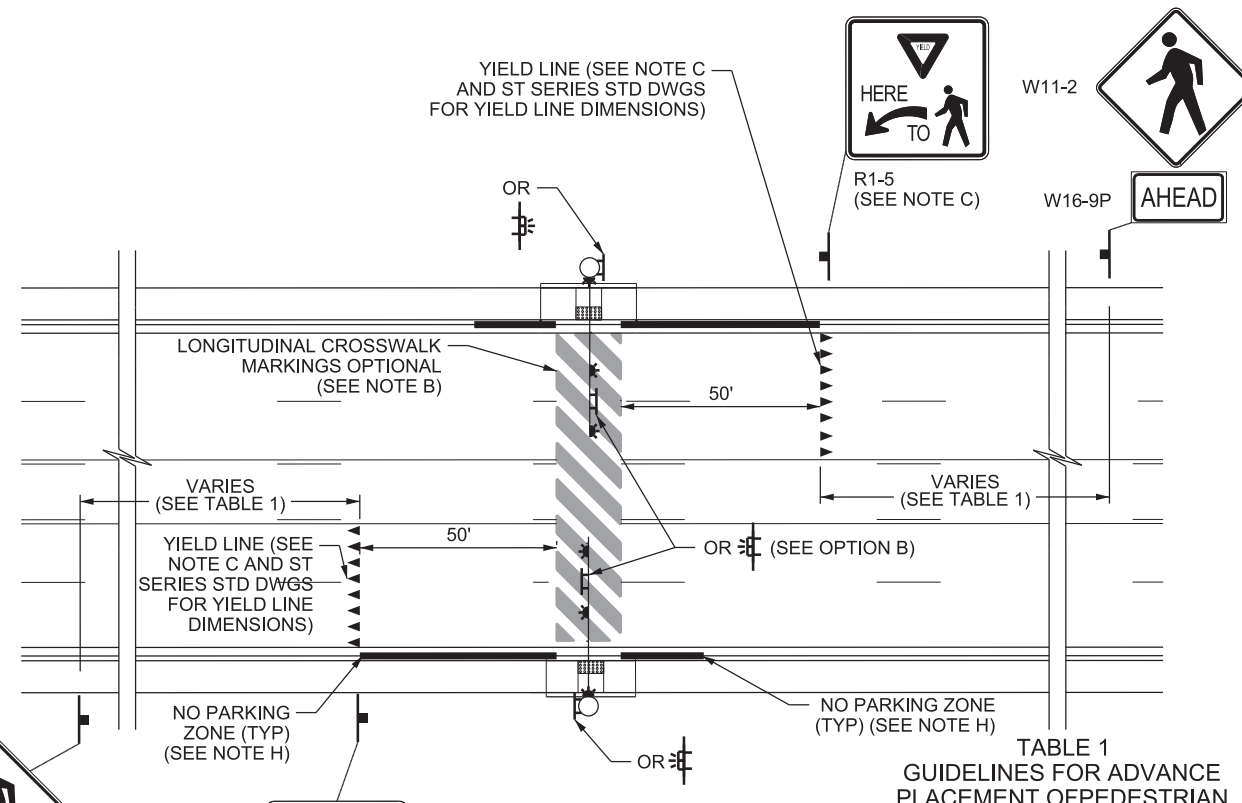
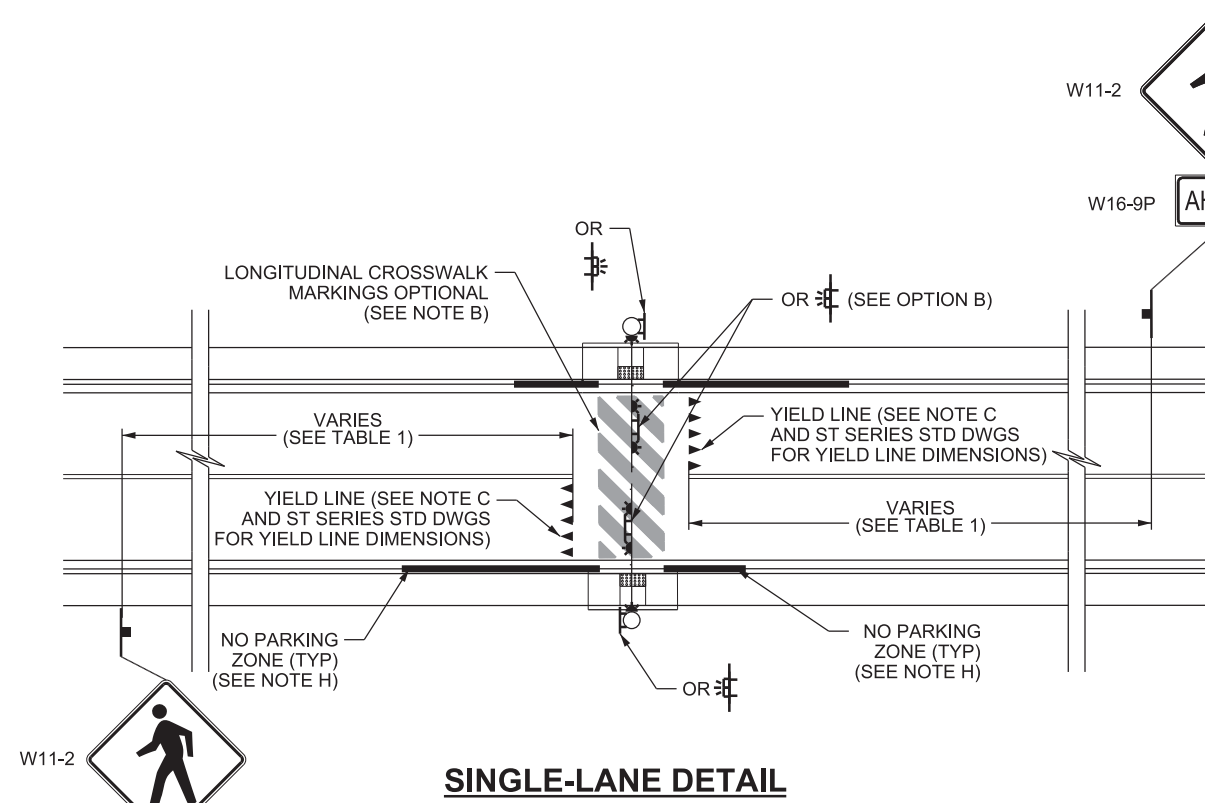


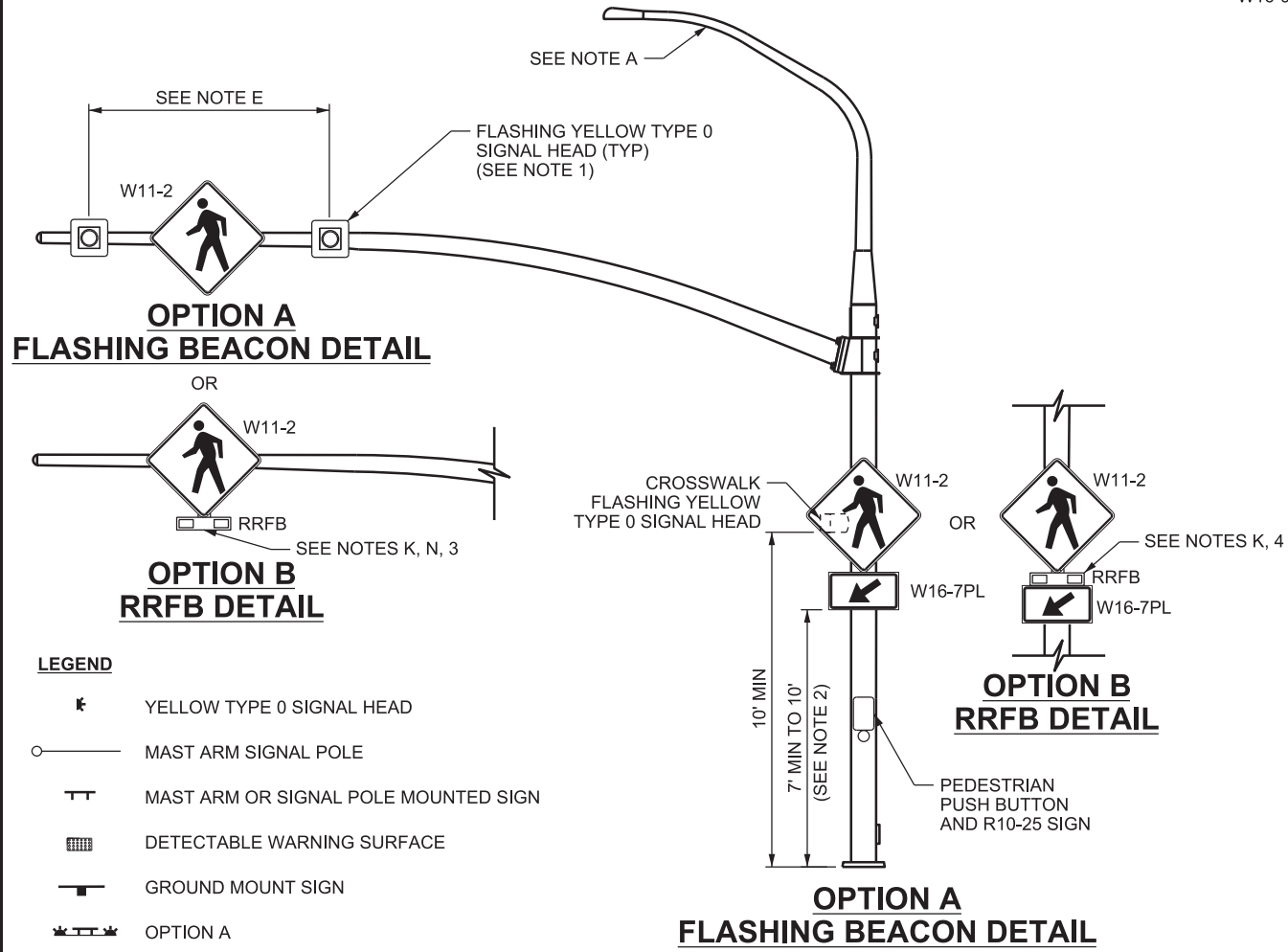
DCN: F:\er\L\Standard Drawings\Imperial\2017 Approved\Supplemental\_Issues\SupplB\_Approved\_August - 2019\Backup\SL6F.dgn 04-SEP-2019



**TABLE 1**  
GUIDELINES FOR ADVANCE PLACEMENT OF PEDESTRIAN CROSSING WARNING SIGNS (SEE UTAH MUTCD TABLE 2C-4 FOR COMPLETE TABLE)

POSTED SPEED	ADVANCE PLACEMENT DISTANCE
20-35 MPH	100 FT
40 MPH	125 FT
45 MPH	175 FT

- NOTES:**
- DO NOT PLACE RETROREFLECTIVE TAPE ON TYPE 0 SIGNAL HEAD BACKPLATES.
  - INCREASE MOUNTING HEIGHT OF POLE-MOUNTED W11-2 SIGN AND W16-7PL PLAQUE IF BLOCKED BY OTHER SIGNS OR OBSTRUCTIONS. USE A 10 FT MOUNTING HEIGHT TO BOTTOM OF W16-7PL PLAQUE IN MULTI-LANE SITUATIONS TO PREVENT VISUAL BLOCKING BY R1-5 SIGN.
  - INSTALL RRFB TO MAST ARM USING THE CLAMP ASSEMBLY AS SHOWN ON SL 3D. EXTEND TUBE BELOW W11-2 SIGN TO INSTALL RRFB.
  - INSTALL RRFB WITH INTEGRATED PEDESTRIAN CONFIRMATION PILOT LIGHT.
- DESIGN-ONLY NOTES:**
- INSTALL STREET LIGHTING UNLESS DIRECTED OTHERWISE BY REGION TRAFFIC OPERATIONS ENGINEER.
  - USE LONGITUDINAL CROSSWALK MARKINGS WHEN REQUIRED BY REGION TRAFFIC OPERATIONS ENGINEER.
  - PLACE YIELD LINE 4 FT FROM CROSSWALK ON SINGLE-LANE APPROACHES OR 50 FT FOR MULTI-LANE APPROACHES. USE "YIELD HERE TO PEDESTRIANS" R1-5 SIGN FOR MULTI-LANE APPROACHES.
  - REFER TO UTAH MUTCD PART 7 FOR REQUIREMENTS AT SCHOOL CROSSINGS.
  - PROVIDE A TYPE 0 SIGNAL HEAD CENTERED OVER EACH THRU LANE, FOR MULTIPLE THRU LANE APPROACHES. PROVIDE W11-2 SIGNS CENTERED BETWEEN ALL TYPE 0 SIGNAL HEADS.  
CENTER W11-2 SIGN IN THE THRU LANE AND PROVIDE TWO TYPE 0 SIGNAL HEADS SPACED AT LEAST 8 FT APART, FOR SINGLE THRU LANE APPROACHES.
  - DO NOT INSTALL FLASHING BEACON CROSSWALK ON ROADWAYS WITH POSTED SPEEDS GREATER THAN 45 MPH UNLESS DIRECTED BY REGION TRAFFIC OPERATIONS ENGINEER.
  - PLACE FLASHING BEACON ASSEMBLIES ON A SINGLE OR TWO SEPARATE MAST ARMS.
  - PLACE "NO PARKING SIGNS" TO PROHIBIT PARKING 50 FT BEFORE CROSSWALK AND 20 FT AFTER CROSSWALK FOR EACH APPROACH.
  - DO NOT INSTALL FLASHING BEACON CROSSWALK WITHIN A REDUCED SPEED SCHOOL ZONE.
  - A MULTI-LANE APPROACH HAS TWO OR MORE LANES MOVING TOWARD THE INTERSECTION, INCLUDING TURNING LANES.
  - MEET FHWA INTERIM APPROVAL (IA-21) REQUIREMENTS FOR RECTANGULAR RAPID FLASHING BEACON (RRFB).
  - RRFB CAN ONLY BE USED ON NON-CONTROLLED APPROACHES.
  - DO NOT MIX FLASHING BEACON TYPES (OPTION A AND OPTION B) AT A CROSSWALK.
  - LOCATE RRFB AND SIGN ON MAST ARM CENTERED OVER THE TRAVEL LANES.



- LEGEND**
- ☐ YELLOW TYPE 0 SIGNAL HEAD
  - MAST ARM SIGNAL POLE
  - ⊥ MAST ARM OR SIGNAL POLE MOUNTED SIGN
  - ▨ DETECTABLE WARNING SURFACE
  - ⊥ GROUND MOUNT SIGN
  - ⊥ OPTION A
  - ⊥ OPTION B

**REVISIONS**

NO.	DATE	APPR.	REMARKS
1	8/29/2019	US	ADDED RRFB OPTION FOR OVERHEAD. ADDED RRFB NOTES.

**UTAH DEPARTMENT OF TRANSPORTATION**  
STANDARD DRAWINGS FOR ROAD AND BRIDGE CONSTRUCTION  
SALT LAKE CITY, UTAH

RECOMMENDED FOR APPROVAL

CHAIRMAN STANDARDS COMMITTEE APPROVED

DEPUTY DIRECTOR

DATE: AUG 29, 2019

**OVERHEAD FLASHING BEACON AT A MIDBLOCK CROSSWALK**

STD. DWG. NO. **SL 6F**

SUPPLEMENTAL DRAWING