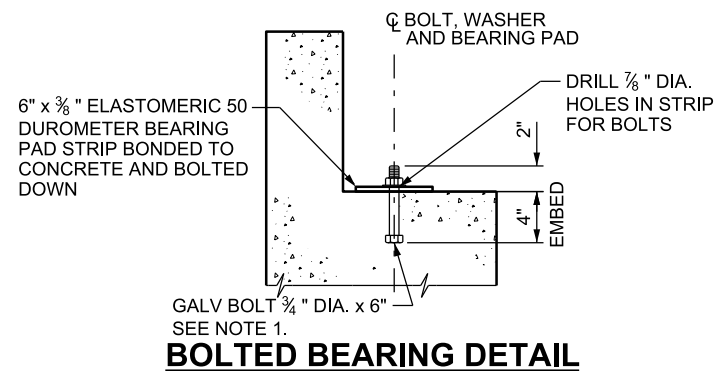
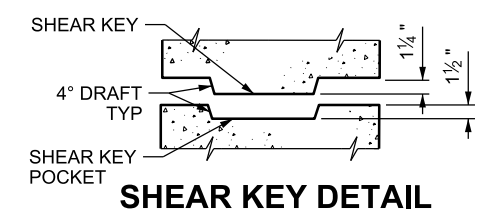


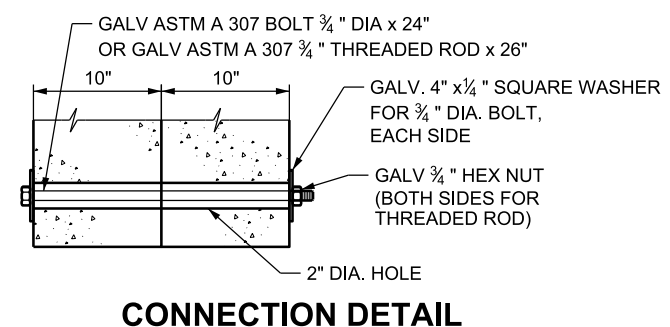
8'-0" CENTER UNIT



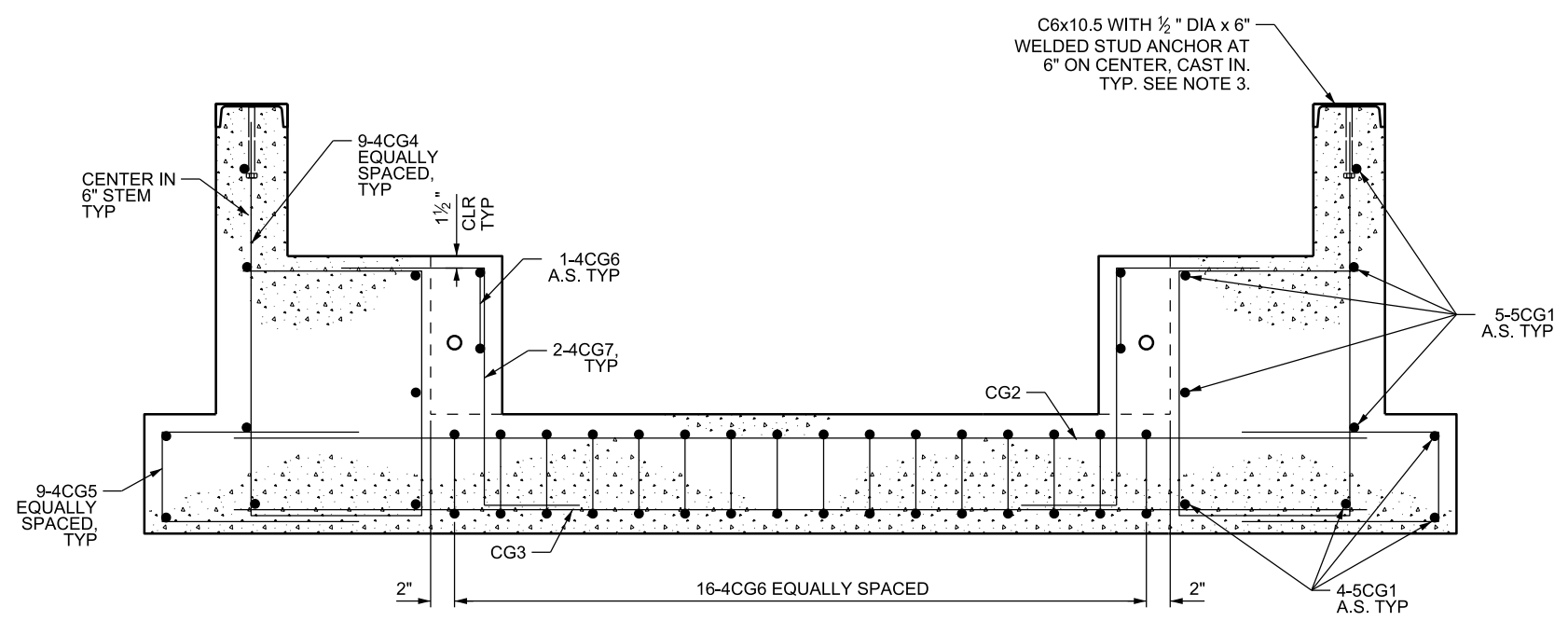
BOLTED BEARING DETAIL



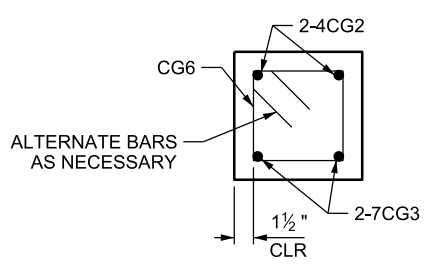
SHEAR KEY DETAIL



CONNECTION DETAIL



SECTION A-A



SECTION B-B

- NOTES:**
- FERRULE LOOP INSERTS SIZED FOR A BOLT OF EQUIVALENT DIAMETER TO THAT SHOWN MAY BE USED INSTEAD OF EMBEDDED BOLTS. FABRICATOR TO INCLUDE ASSOCIATED BOLT, OR EYE BOLT, OF LENGTH APPROPRIATE FOR FERRULE.
 - PROVIDE EMBEDDED LIFTING DEVICES CAPABLE OF SUPPORTING 20,000 LB MINIMUM TO LIFT THE PRECAST CATTLE GUARD UNIT INTO ITS FINAL POSITION.
 - WEEPHOLES ARE PERMITTED IN THE CHANNEL SECTION TO RELEASE ENTRAPPED AIR.

REINFORCING STEEL SCHEDULE FOR CENTER UNIT

MARK	LOCATION	SIZE	REQ'D	LENGTH	TOTAL	SKETCH	MARK	LOCATION	SIZE	REQ'D	LENGTH	TOTAL	SKETCH
CG1	CATTLE GUARD	5	18	7'-8"	138'-0"		CG6	CATTLE GUARD	4	32	3'-1"	98'-8"	
CG2	CATTLE GUARD	4	4	7'-8"	30'-8"		CG7	CATTLE GUARD	4	8	3'-6"	28'-0"	
CG3	CATTLE GUARD	7	4	7'-8"	30'-8"								
CG4	CATTLE GUARD	4	18	6'-8"	120'-0"								
CG5	CATTLE GUARD	4	18	3'-5"	61'-6"								

ITEM	REQ'D	SIZE	LENGTH
CHANNEL	2	C6x10.5	8'-0"
STUD ANCHOR	32	1/2" DIA	0'-6"

SUPPLEMENTAL DRAWING

NO.	DATE	APPR.	REMARKS
2	2/28/19	JWC	RENEW LENGTH OF CG6 BAR
1	10/25/18	JWC	COMPLETE REVISION TO CATTLE GUARD

UTAH DEPARTMENT OF TRANSPORTATION
 STANDARD DRAWINGS FOR ROAD AND BRIDGE CONSTRUCTION
 SALT LAKE CITY, UTAH

RECOMMENDED FOR APPROVAL: _____ DATE: FEB. 28, 2019
 CHAIRMAN STANDARDS CC APPROVED: _____ DEPUTY DIRECTOR: _____

8'-0" PRECAST CONCRETE CATTLE GUARD CENTER UNIT

STD. DWG. NO. **SW 1C**

04-MAR-2019 DGN Files: L:\Standard Drawings\Impervial\2017 Approved\Supplemental Issues\SuppApproved Feb - 2019\Backup\SW01C.dgn