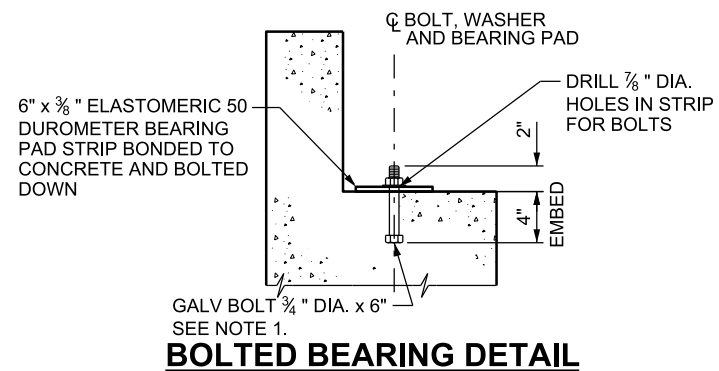
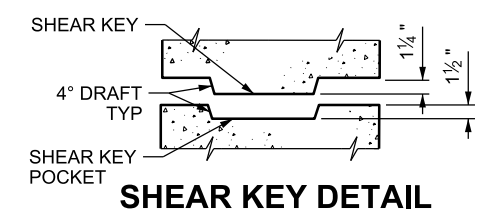


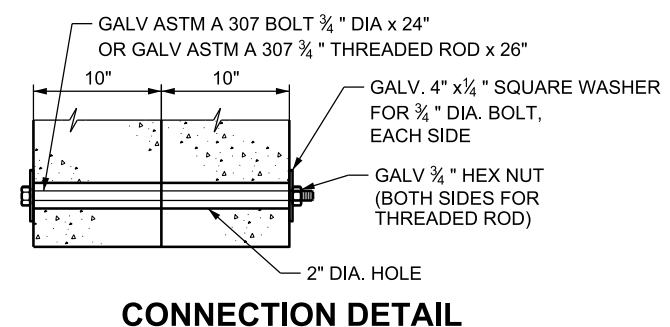
6'-0" CENTER UNIT



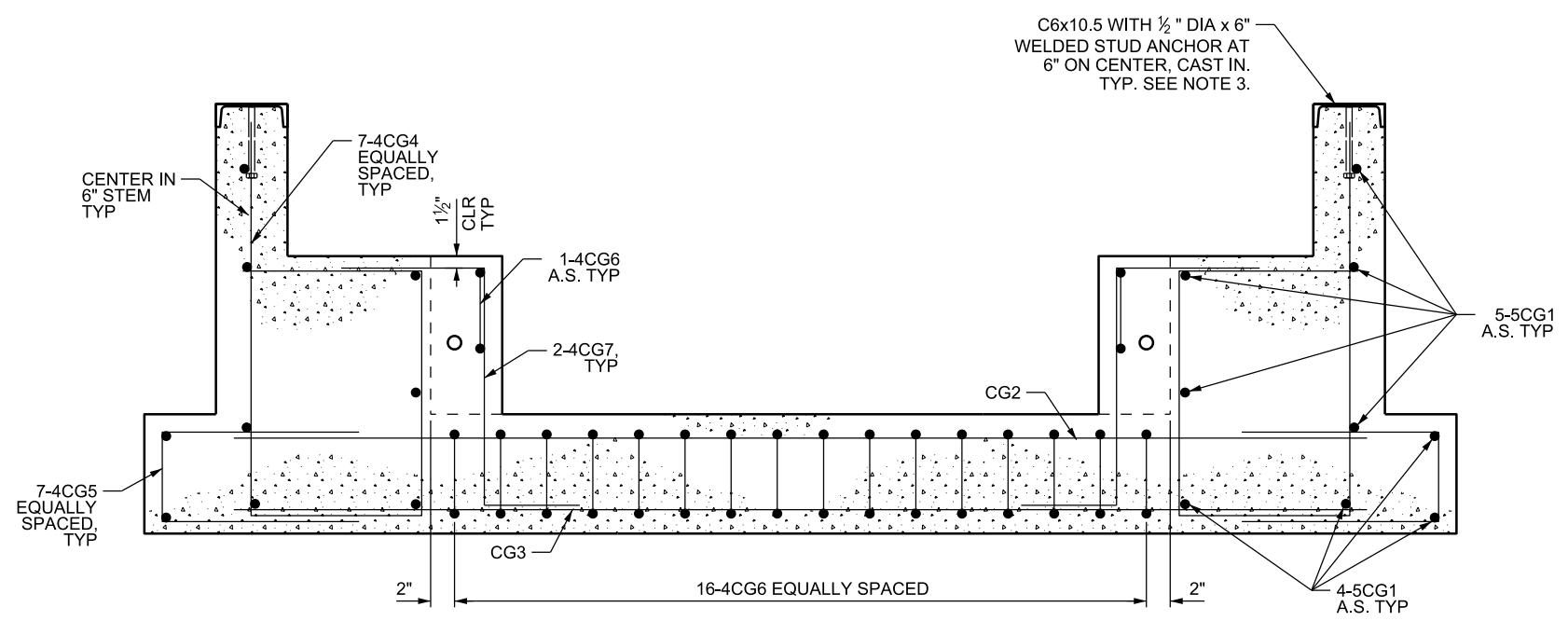
BOLTED BEARING DETAIL



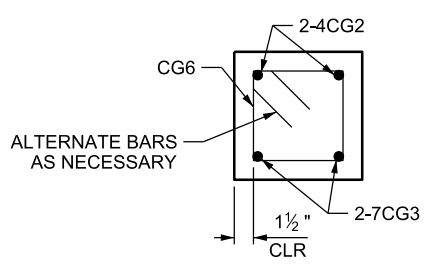
SHEAR KEY DETAIL



CONNECTION DETAIL



SECTION A-A



SECTION B-B

REINFORCING STEEL SCHEDULE FOR CENTER UNIT

MARK	LOCATION	SIZE	REQ'D	LENGTH	TOTAL	SKETCH	MARK	LOCATION	SIZE	REQ'D	LENGTH	TOTAL	SKETCH
CG1	CATTLE GUARD	5	18	7'-8"	138'-0"		CG6	CATTLE GUARD	4	32	3'-1"	98'-8"	
CG2	CATTLE GUARD	4	4	7'-8"	30'-8"								
CG3	CATTLE GUARD	7	4	7'-8"	30'-8"								
CG4	CATTLE GUARD	4	14	6'-8"	93'-4"								
CG5	CATTLE GUARD	4	14	3'-5"	47'-10"								
CG7	CATTLE GUARD	4	8	3'-6"	28'-0"	90° STD. HOOK							

STRUCTURAL STEEL PER UNIT			
ITEM	REQ'D	SIZE	LENGTH
CHANNEL	2	C6x10.5	6'-0"
STUD ANCHOR	24	1/2" DIA	0'-6"

- NOTES:**
- FERRULE LOOP INSERTS SIZED FOR A BOLT OF EQUIVALENT DIAMETER TO THAT SHOWN MAY BE USED INSTEAD OF EMBEDDED BOLTS. FABRICATOR TO INCLUDE ASSOCIATED BOLT, OR EYE BOLT, OF LENGTH APPROPRIATE FOR FERRULE.
 - PROVIDE EMBEDDED LIFTING DEVICES CAPABLE OF SUPPORTING 20,000 LB MINIMUM TO LIFT THE PRECAST CATTLE GUARD UNIT INTO ITS FINAL POSITION.
 - WEEPHOLES ARE PERMITTED IN THE CHANNEL SECTION TO RELEASE ENTRAPPED AIR.

SUPPLEMENTAL DRAWING

REVISIONS			
NO.	DATE	APPR.	REMARKS
2	2/28/19	JWC	RENSED LENGTH OF CG4 BAR
1	10/25/18	JWC	NEW DRAWING, COMPLETE REVISION TO CATTLE GUARD

UTAH DEPARTMENT OF TRANSPORTATION
 STANDARD DRAWINGS FOR ROAD AND BRIDGE CONSTRUCTION
 SALT LAKE CITY, UTAH

RECOMMENDED FOR APPROVAL: *[Signature]*

DATE: FEB. 28, 2019

CHAIRMAN STANDARDS COMMITTEE APPROVED: *[Signature]*

DEPUTY DIRECTOR

6'-0" PRECAST CONCRETE CATTLE GUARD CENTER UNIT

STD. DWG. NO. **SW 1E**

STANDARD DRAWING TITLE

04-MAR-2019 D:\Users\l\Standard\Drawings\Impervial\2017 Approved\Issues\SuppApproved Feb - 2019\Backup\SW01E.dgn