

# TOC STATUS REPORT **JANUARY 2001**

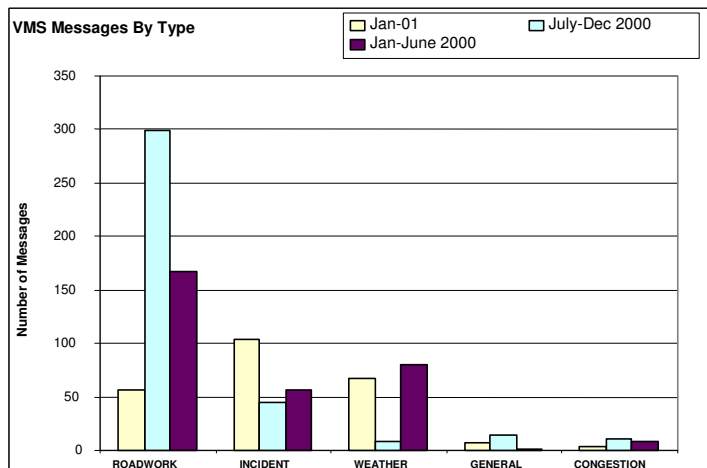
2060 South 2760 West, Salt Lake City, UT 84104  
 Phone: 887-3700

Fax: 887-3797

[ <http://www.utahcommuterlink.com> ]  
 Pager: 291-1897

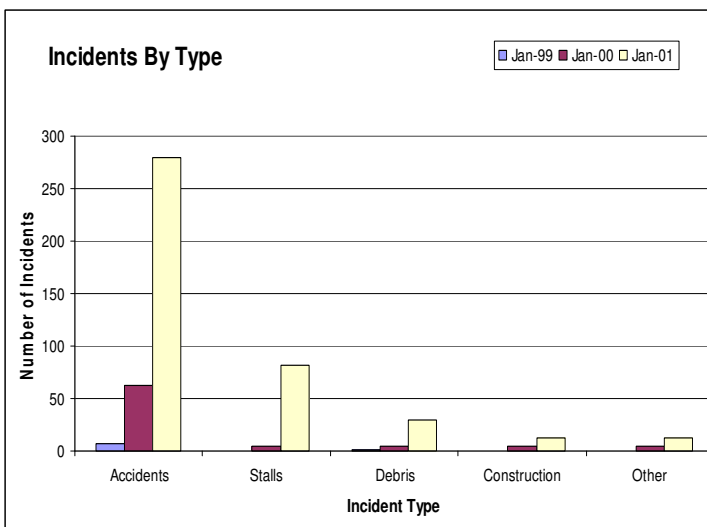
## HIGHLIGHTS

- ◆ **123** Traffic Signals Online & Operating
- ◆ **239** VMS Messages Displayed
- ◆ **105** CCTV Cameras Operational
- ◆ **43** Permanent VMS Operational
- ◆ **34** Signal Engineering Calls
- ◆ **306** Signal Maintenance Calls (12 open)
- ◆ **22** Open Signal Work Orders
- ◆ **13** Open ATMS Device Work Orders
- ◆ **416** Incidents Responded To
- ◆ **1,597,114** Website Hits



## CURRENT EVENTS

- A. New And More User Friendly Website.
- B. New ATMS Java Map
- C. New I-15 Cameras
- D. UDOT Working With UTA
- E. Troy Hyer New Evening Supervisor
- F. New Operator Sean Thompson



## DEVICE STATUS

	CCTV	VMS	TMS	Signals
Operational	105	43	77	123
Website	104	41		
Installed	133	50	191	300
Under Test	0	0	0	
Accepted	108	46	158	

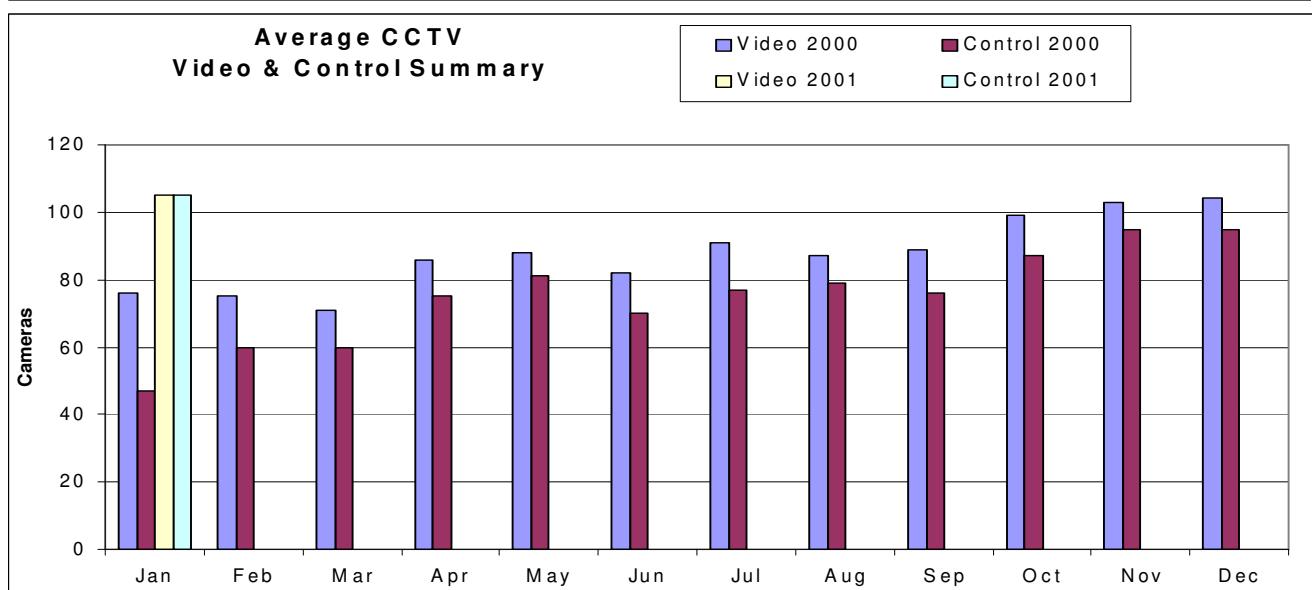
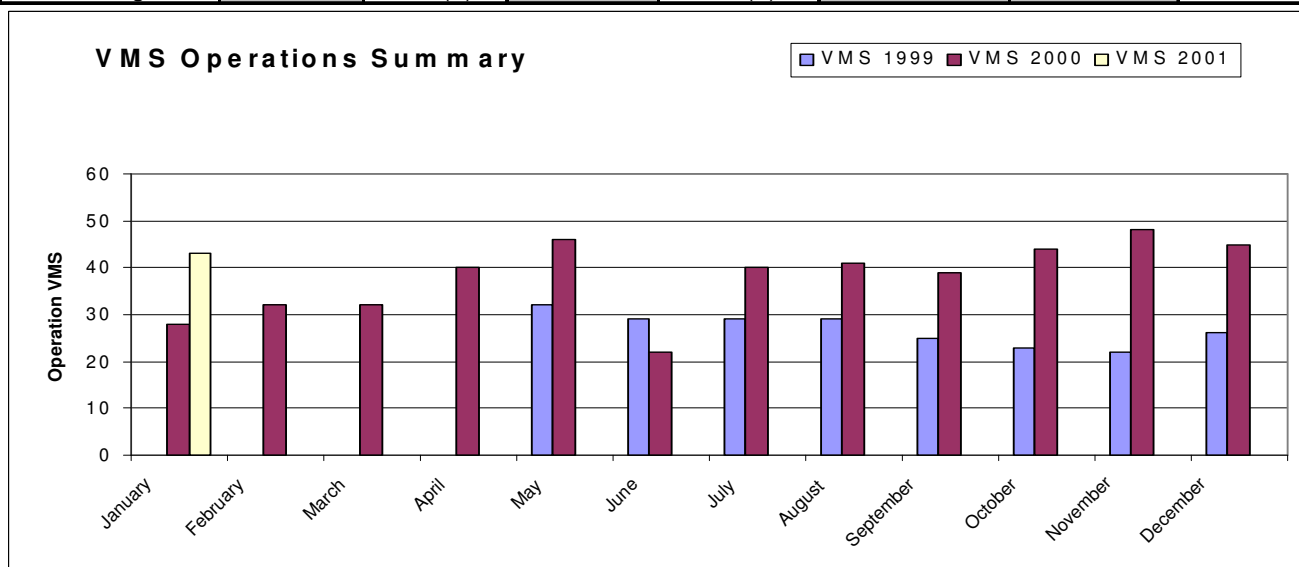
## OPERATIONS SUMMARY

- **Hours of Operation:** 5am – 11pm, Mon-Sun
- **On Call:** 24 hours / 7 days
- **Operators:** (2) per shift, (1) daytime and (1) nighttime supervisor (8 operators employed total).
- **Misc. Devices Controlled:**
  - (8) Portable VMS & (2) IMT Truck-mounted VMS
  - (2) Highway Advisory Radio sites at Parleys and Lakepoint
  - (2) HAR Flash-Beacon Signs (Knudsens, Lakepoint)

## General Device Statistics

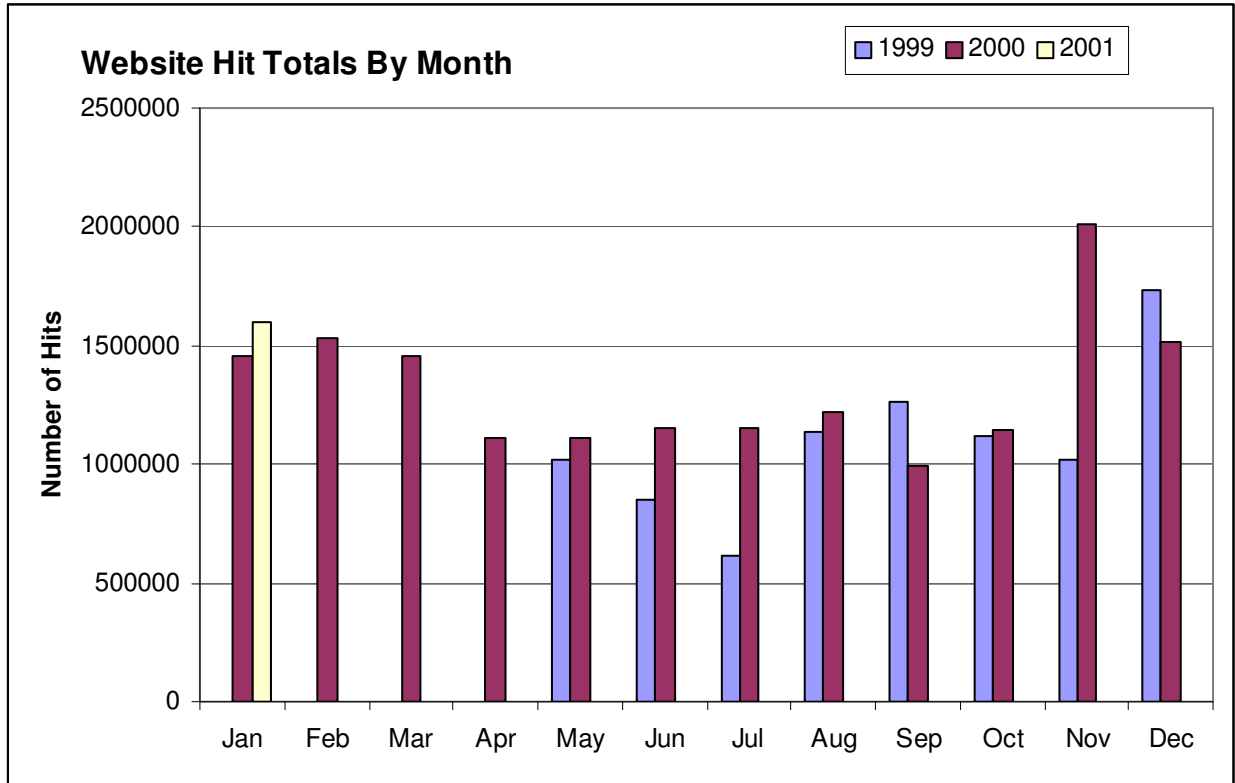
This provides the current status of the various device types in terms of deployment, testing and online operation at the TOC. The change in number of devices under each status heading is also indicated (+/-) where such has taken place during the past month. Devices represented include those on I215, I15, I15-North, I80, Parleys Canyon, and SR201.

DEVICE	Video (+/-)	Control (+/-)	Website (+/-)	Installed (+/-)	Under Test (+/-)	Accepted (+/-)	Planned (Total)
Freeway CCTV	98(+1)	98(+1)	97(=)	123(=)	0	98	152
Surface CCTV	7(=)	7(=)	7(=)	10(=)	0	10	10
Freeway VMS		25(-3)	26(=)	33(=)	0	29	37
Surface VMS		18(+3)	15(=)	17(=)	0	17	17
Portable VMS		2(=)		2(=)			12
TMS Stations		77(=)		191(=)	0	158	227
Traffic Signals		123(=)		300(=)			550

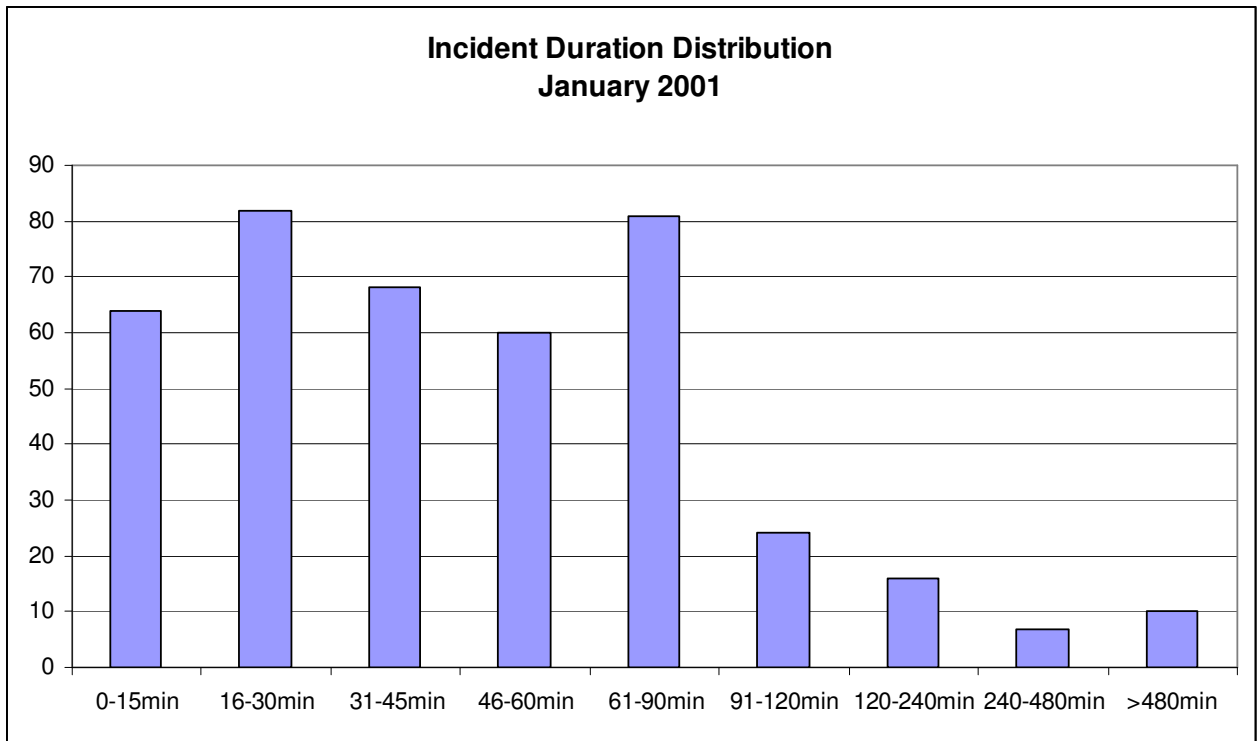
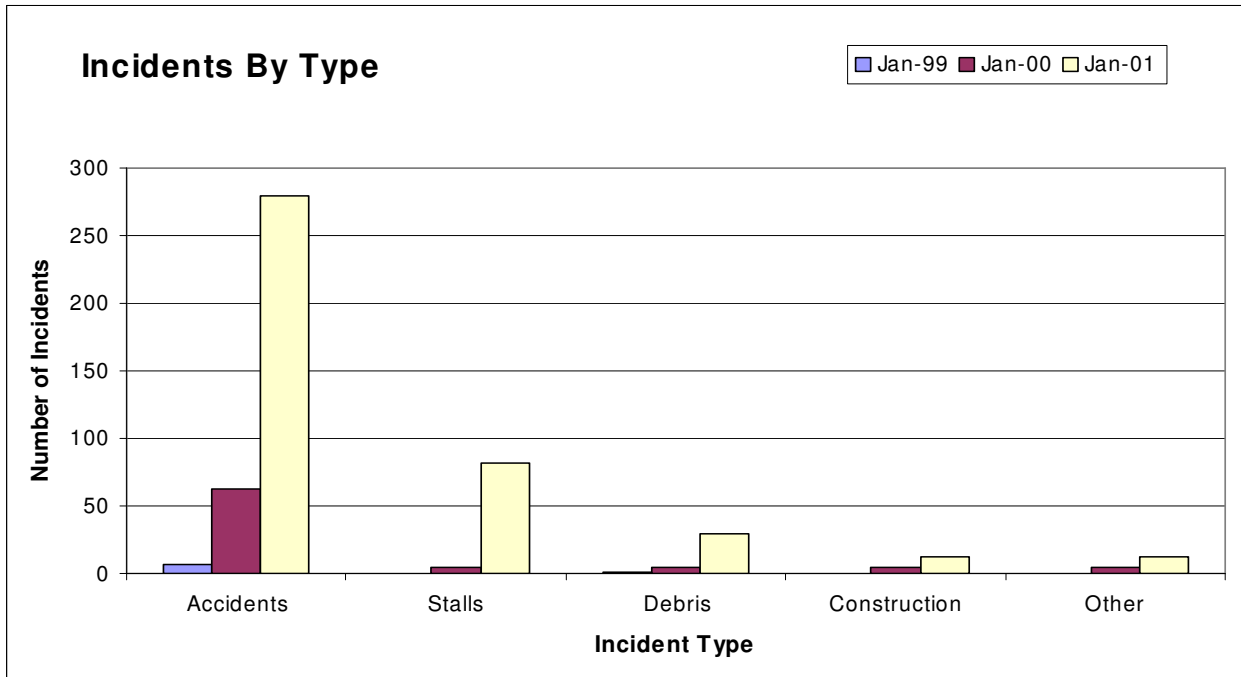


## General Website Statistics

The graph below illustrates the site access usage during the month of January, compared with 1999, 2000 and 2001

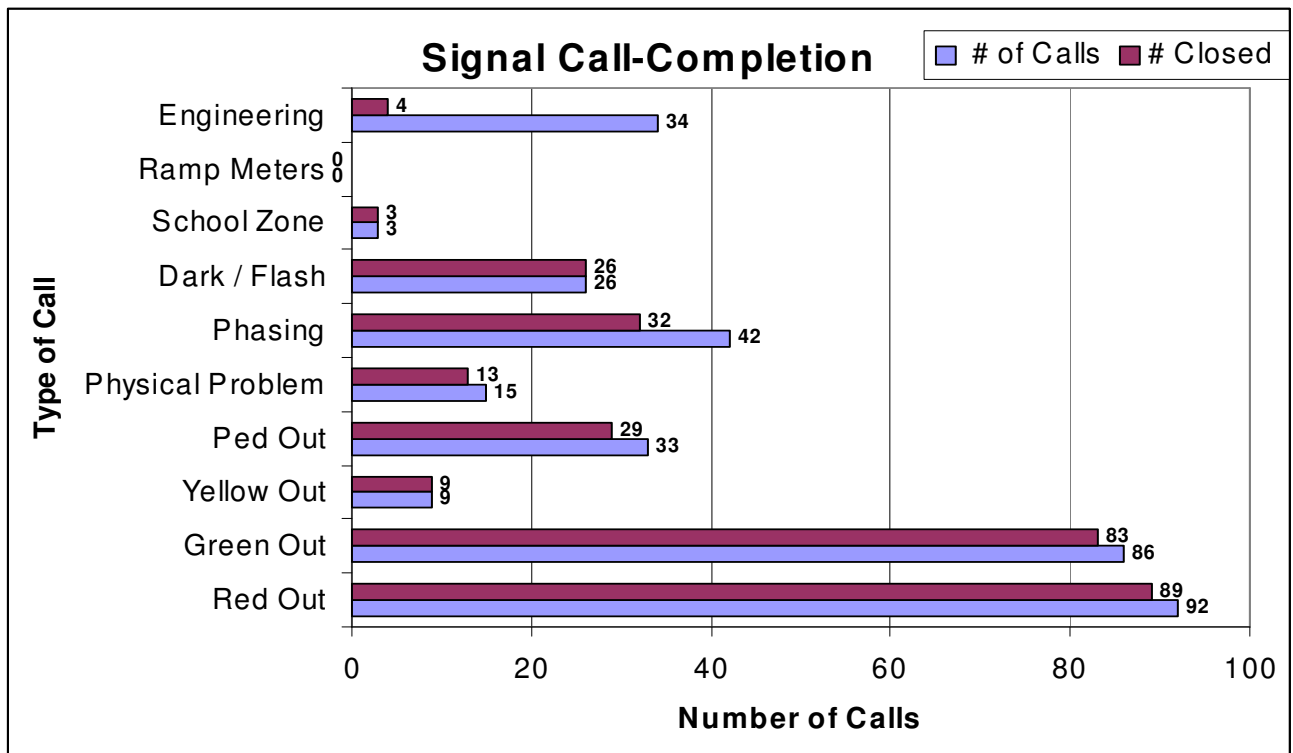
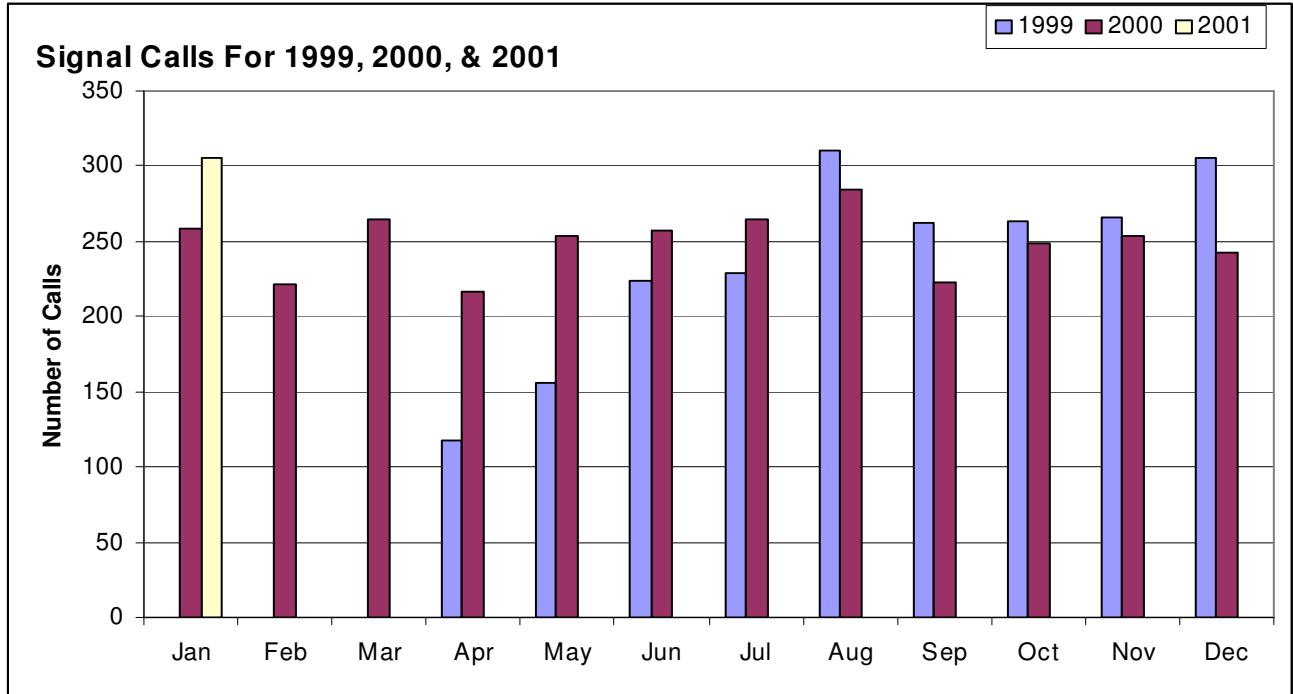


## General Incident Statistics

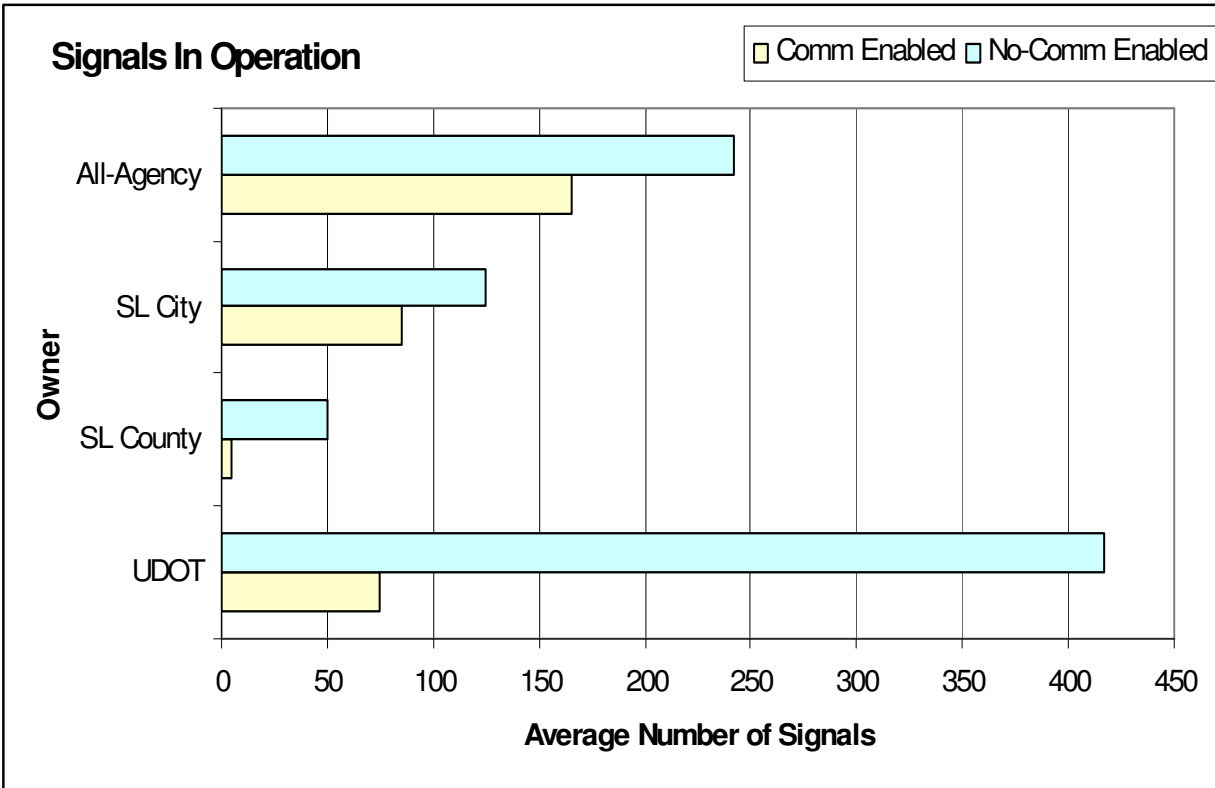


## General Signal Statistics

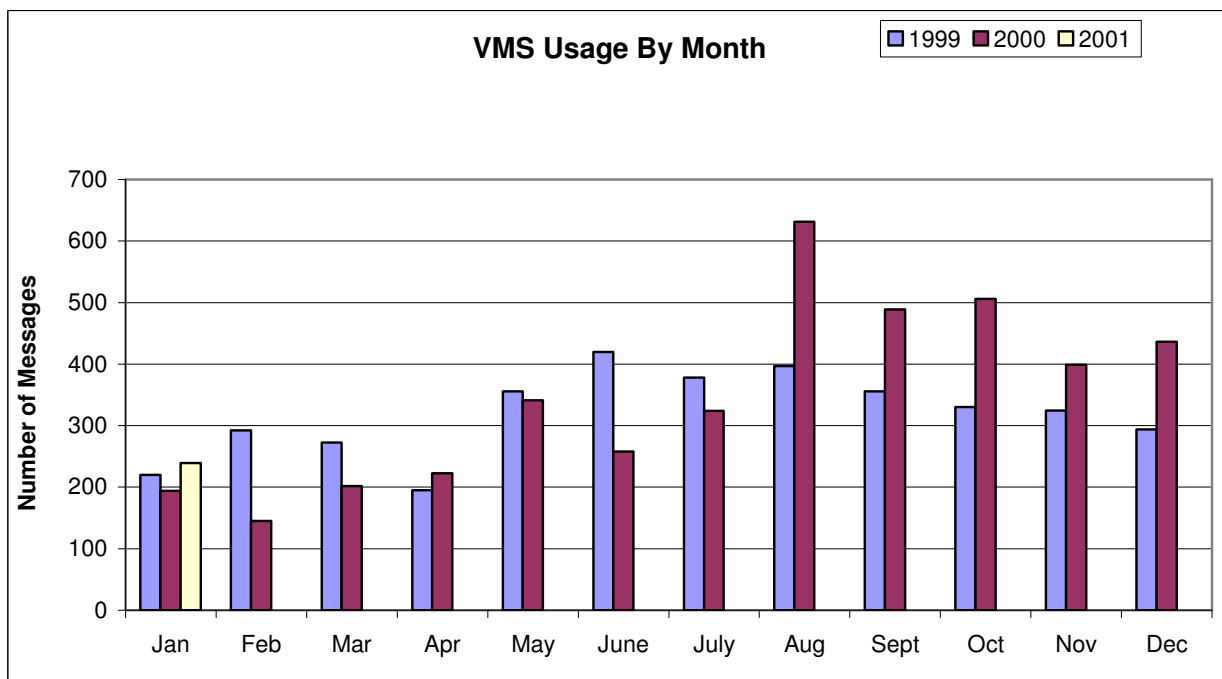
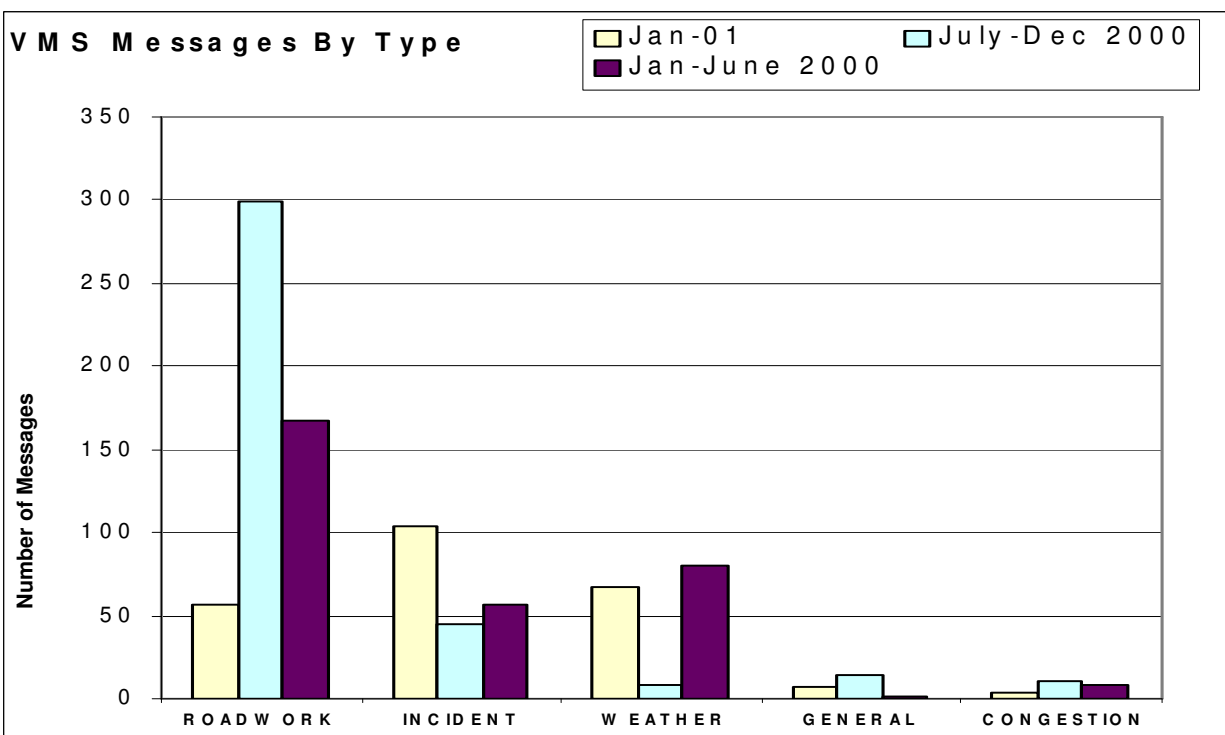
All Engineering and Maintenance signal calls that are still open as of the end of the month are attached at the end of this report.



The graph below illustrates the average number of signals that were online and communicating to the TOC versus the average number which were offline to the TOC during the past month. These values are taken from a daily status report run during the AM Peak period each morning.



## General VMS Statistics







## Radio Broadcast (Airwatch) Statistics

The following graph illustrates the number of sponsored UDOT Commuterlink ads run by the Airwatch radio stations during January. These are not traffic broadcasts, but actual commercials for Commuterlink.

