

TOC STATUS REPORT JANUARY 2002

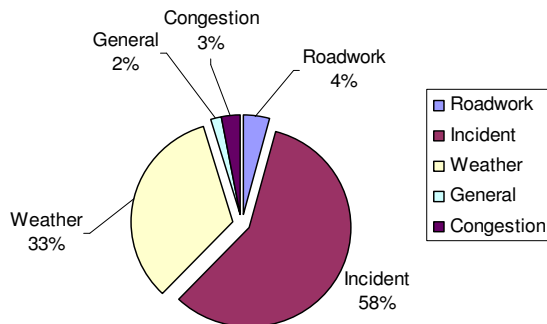
2060 South 2760 West, Salt Lake City, UT 84104
 Phone: 887-3700 Fax: 887-3797

[<http://www.utahcommuterlink.com>]

HIGHLIGHTS

- ◆ **569** Traffic Signals Online
- ◆ **167** VMS Messages Displayed
- ◆ **212** Operational CCTV Cameras
- ◆ **59** Permanent Operational VMS
- ◆ **30** Signal Timing Calls
- ◆ **138** Signal Maintenance Calls
- ◆ **176** Open Work Orders
- ◆ **25** Open ATMS Device Work Orders
- ◆ **686** Incident Responses
- ◆ **35,889,493** Total Website Hits

VMS Messages by Type for January 2002



CURRENT EVENTS

A.

DEVICE STATUS

	CCTV	VMS	TMS	UDOT Signals
Operational	212	59	156	439
Website	186	53		
Installed	225	61	231	550
Under Test	12	6	0	
Accepted	201	53	223	

OPERATIONS SUMMARY

- **Hours of Operation:** 5am – 11pm, Mon-Sun
- **On Call:** 24 hours / 7 days
- **Operators:** (2) per shift, (1) ATIS operator during weekday peak hours, (1) daytime and (1) nighttime supervisor, (3) temporary operators (11 operators currently employed).
- **Misc. Devices:**
 - (12) Portable and truck-mount arrow boards
 - (3) Highway Advisory Radio sites at the Parleys Canyon Chain-up area, Lakepoint near Tooele, and Knudsen's Corner
 - (2) Portable VMS

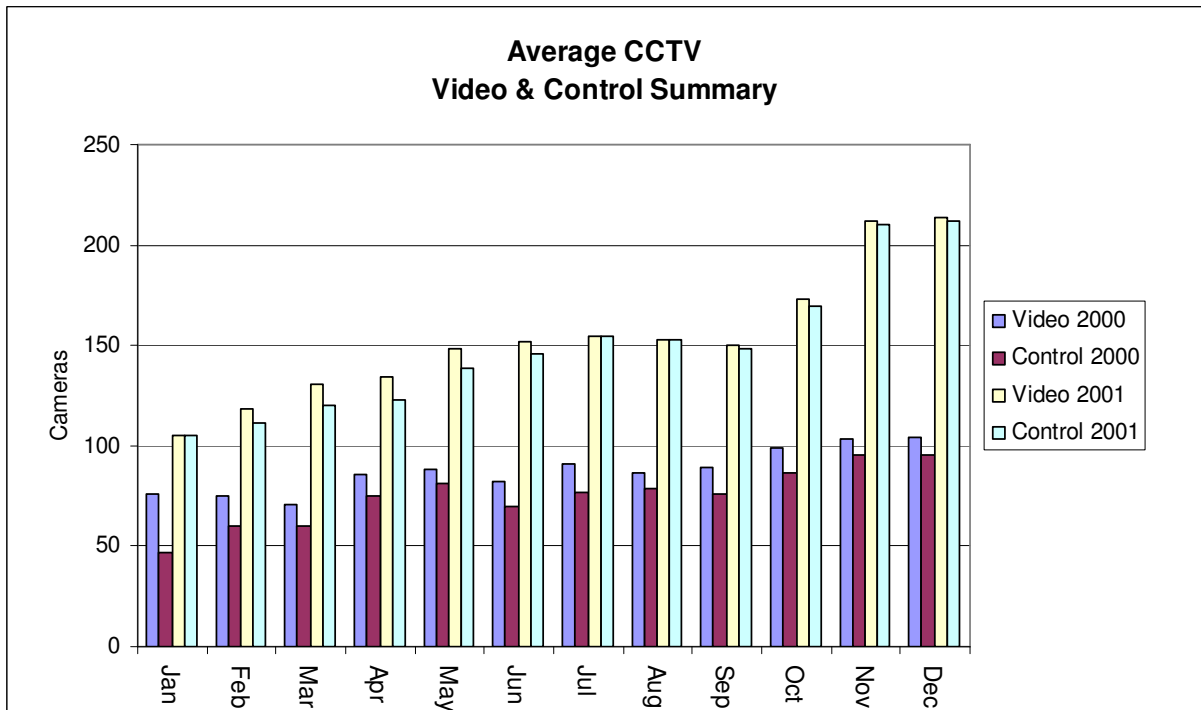
Current Events for January, 2002

A.

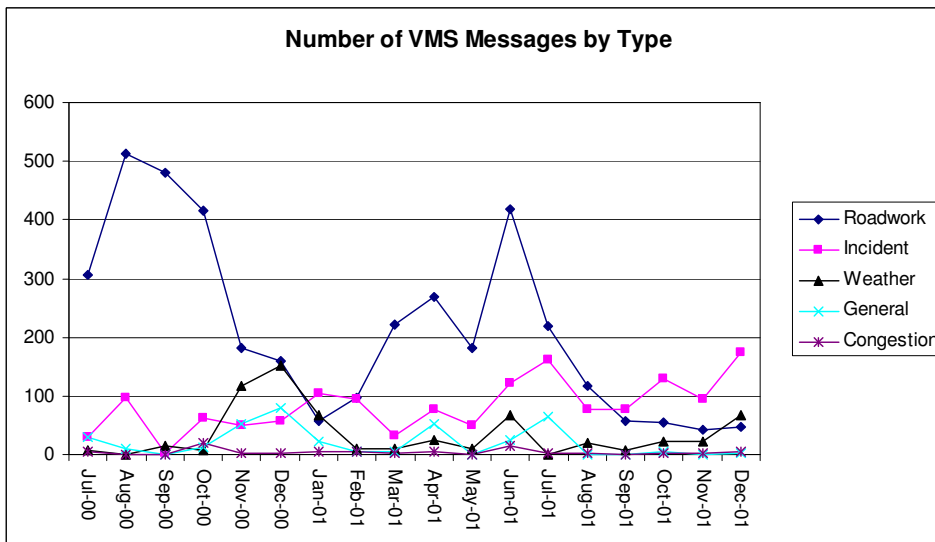
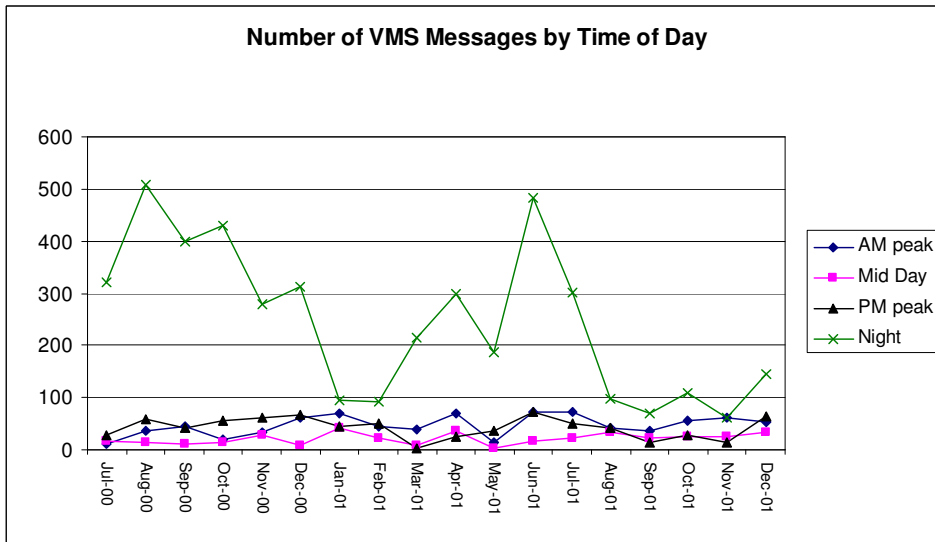
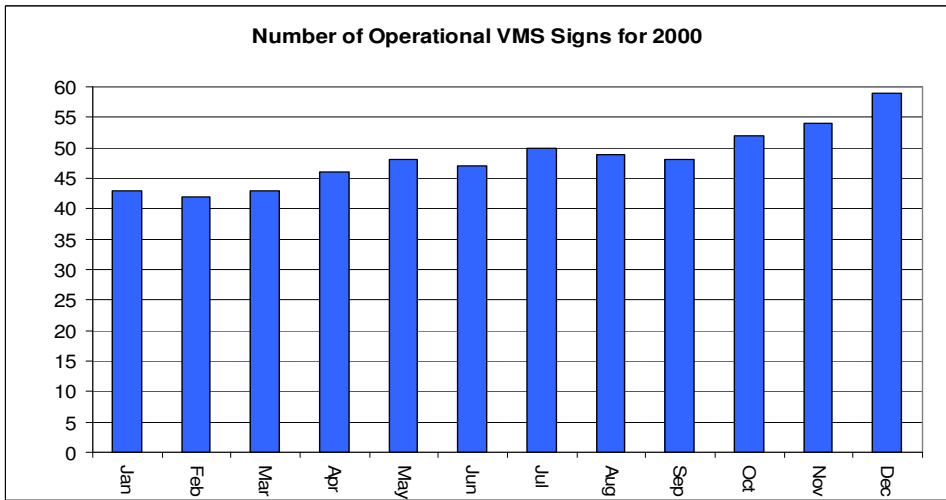
Device Statistics

This provides the current status of the various device types in terms of deployment, testing and online operation at the TOC. The change in number of devices under each status heading is also indicated (+/-) where such has taken place during the past month. These devices are distributed throughout the state.

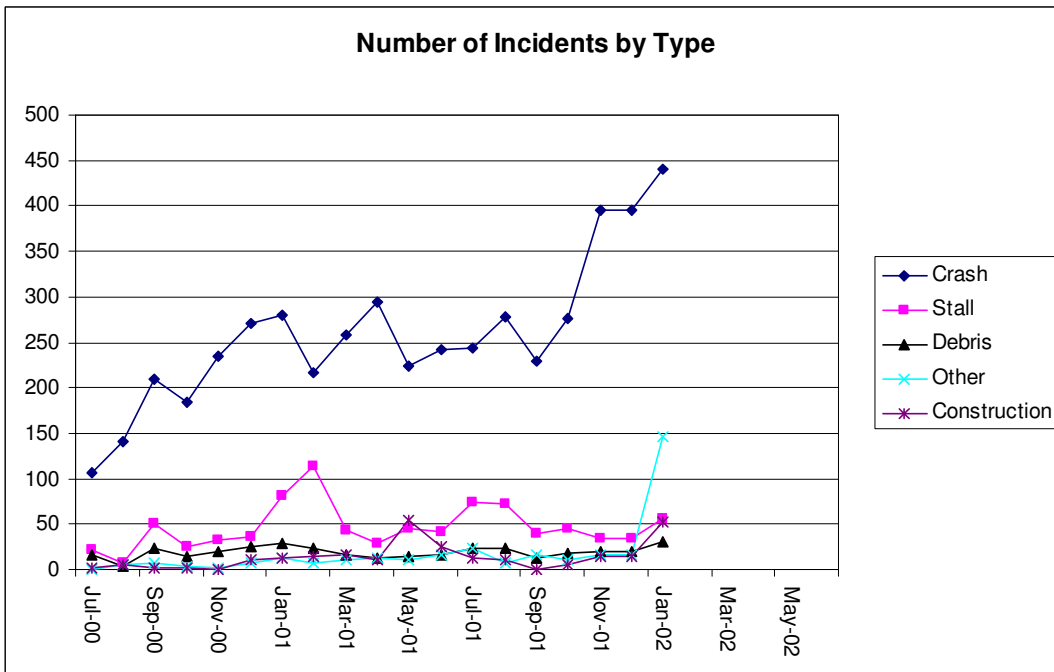
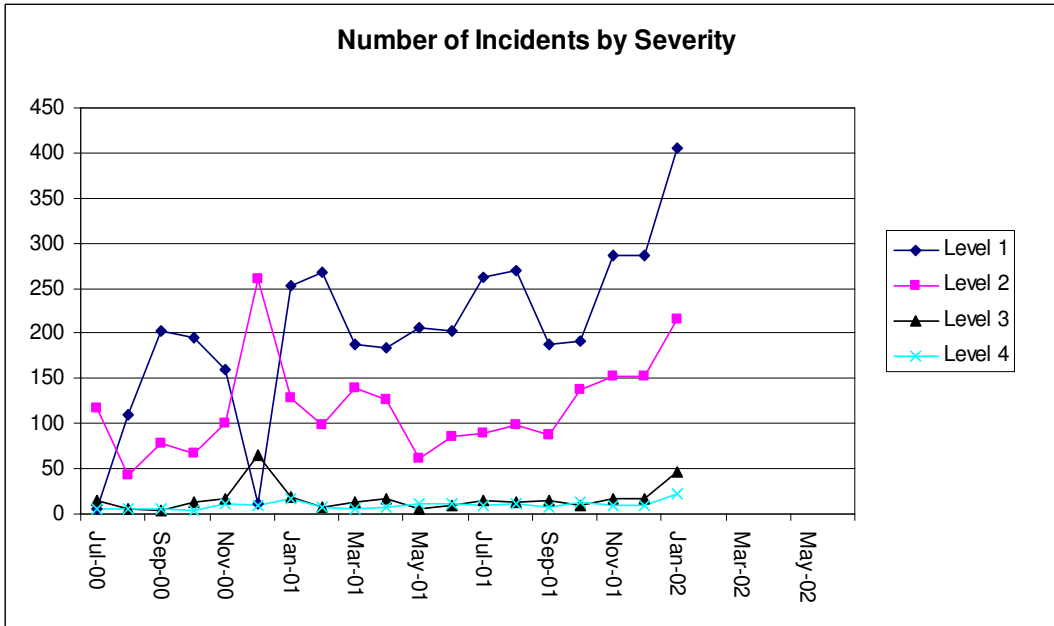
DEVICE	Video (+/-)	Control (+/-)	Website (+/-)	Installed (+/-)	Under Test (+/-)	Accepted (+/-)	Planned (Total)
Freeway CCTV	157(=)	156(=)	157(=)	161 (=)	0 (-1)	161 (+1)	161
Surface CCTV	29(-1)	29(=)	29(=)	32 (=)	2 (=)	30 (=)	32
Dial-up CCTV	28(+3)	27(+2)		32 (=)	6 (-3)	24 (+14)	32
Freeway VMS		41(+5)	38(+2)	42 (=)	6 (=)	36 (=)	42
Surface VMS		16(=)	16(=)	17 (=)	0 (=)	17 (=)	17
Portable VMS		2 (=)		2 (=)			12
TMS Stations		171(+15)		231 (=)	0	223	231
Traffic Signals		475 (-14)		550 (=)			628(+48)



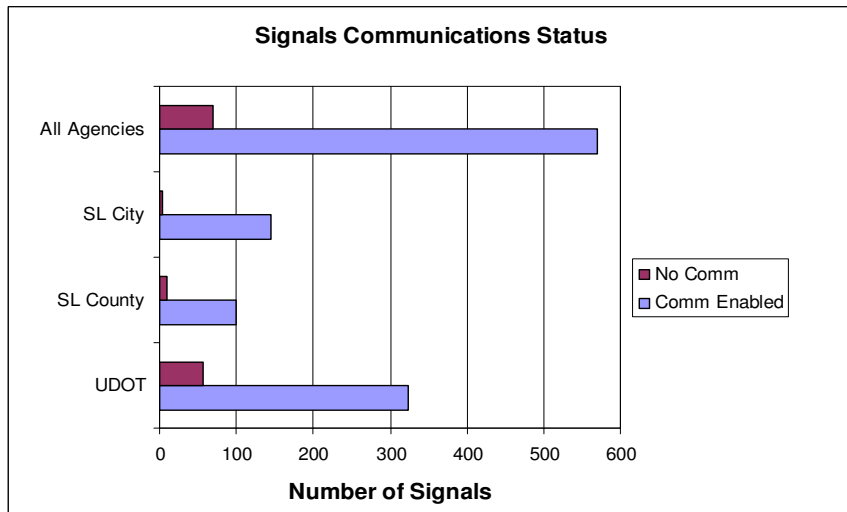
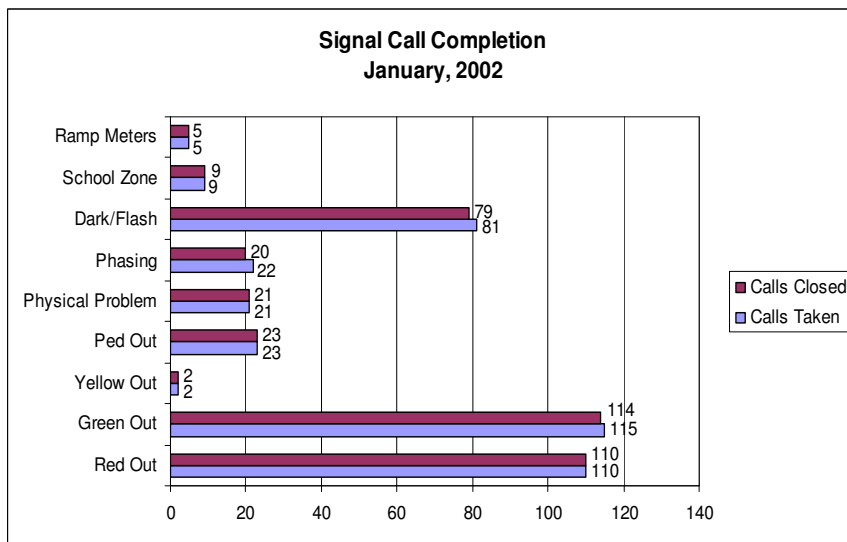
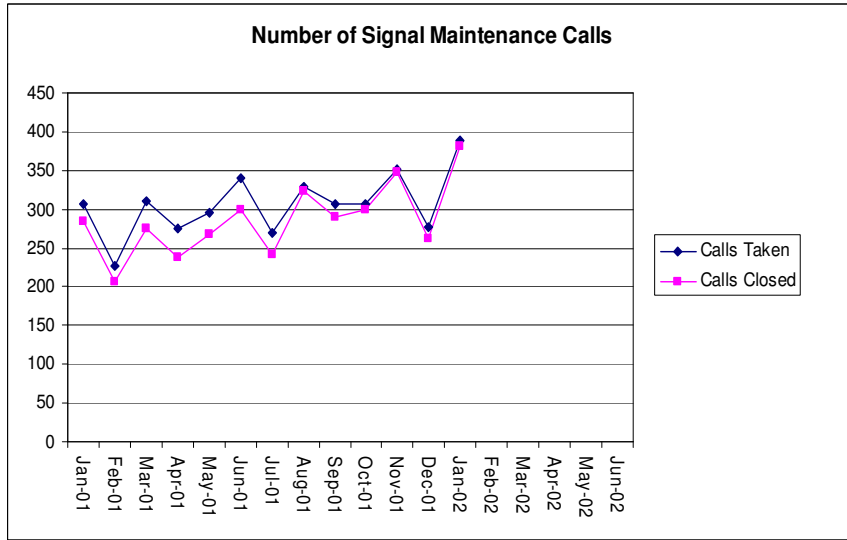
Variable Message Signs



Incident Statistics



Traffic Signal Statistics



Radio and Television Broadcast Statistics

Many of the local media organizations now receive much of their traffic information from the TOC. During peak periods, email updates on crashes, road-weather conditions, and other travel congestion concerns are sent out at least every half hour, with other updates sent when other important information comes in. Participating media sources consist of television stations, independent radio stations, and two organizations (Metro Networks and Airwatch Corporation) that provide traffic updates to multiple radio stations.

The following table shows “Reach Statistics” obtained from Airwatch Corporation. Reach Statistics are an estimate of the number of people that hear one or more broadcasts during a given period. This information is updated on a quarterly basis. There are currently 11 channels subscribed to the Airwatch traffic updates. One other, KUER, also participates, but is not shown in the table below because it is a public service station.

Radio Broadcast Statistics for a 1 Week Period

STATION	SPOTS	Persons Reached (age 12+)	Percent of Population Reached
KALL	125	38,300	2.9%
KISN-FM	105	100,600	7.2%
KKAT-FM	80	91,400	6.2%
KCPX-FM	95	60,400	4.0%
KNRS	225	92,400	7.0%
KODJ-FM	105	108,400	7.8%
KOSY/KRAR	95	69,600	4.9%
KZHT-FM	80	173,900	11.7%
KWLW	20	36,200	1.8%
KURR-FM	50	69,000	4.6%
TOTALS:	980	632,600	45.2%

In addition to radio broadcasts, Airwatch is also providing television reports from the TOC during the local morning news. They currently provide nine spots each morning and will begin to provide two spots each afternoon beginning in January. Metro Networks is currently preparing to provide additional television broadcasts from the second floor of the TOC also beginning in January.

Website Statistics

The following statistics are taken from the commuterlink website statistics page at <http://www.utahcommuterlink.com/activity/commuterlinkmonthly.htm>.

Hits	Entire Site (Successful)	35,889,439
	Average Per Day	1,157,725
	Home Page	84,550
Visitor Sessions	Visitor Sessions	122,154
	Average Per Day	4,166
	Average Visitor Session Length	00:26:03
	International Visitor Sessions	0.96%
	Visitor Sessions of Unknown Origin	45.67%
Visitors	Visitor Sessions from United States	53.36%
	Unique Visitors	36,273
	Visitors Who Visited Once	27,389
	Visitors Who Visited More Than Once	8,884

The values shown in the chart below are the sum of the total number of hits on each page of the Commuterlink Website.

