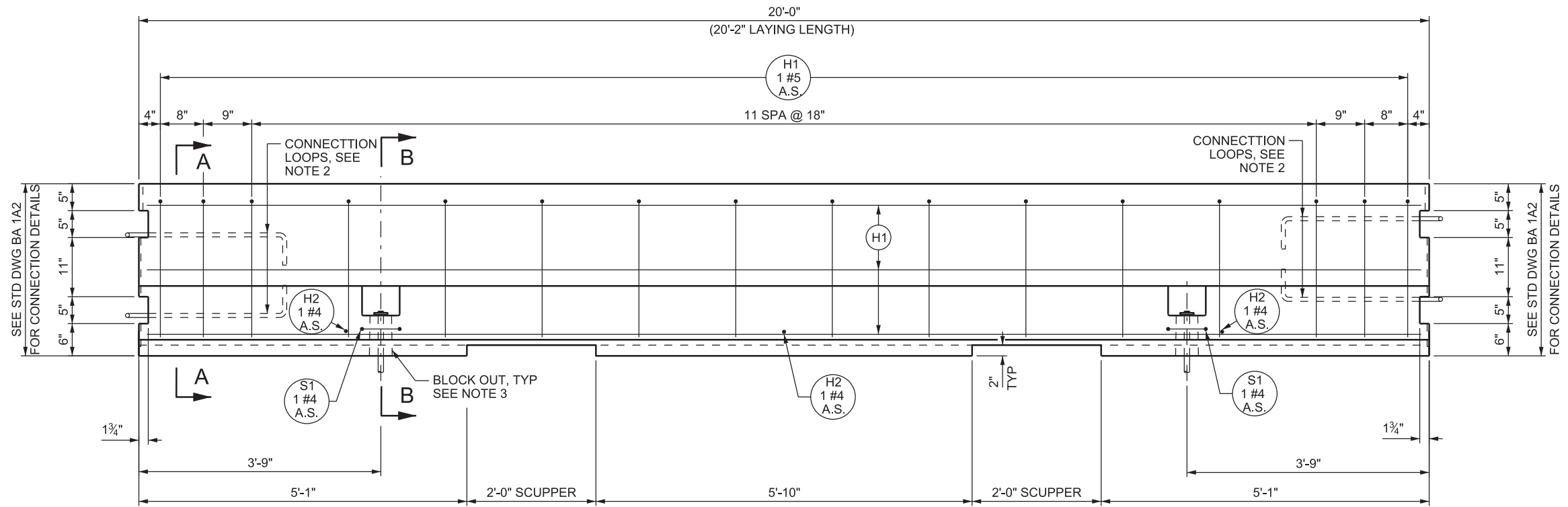
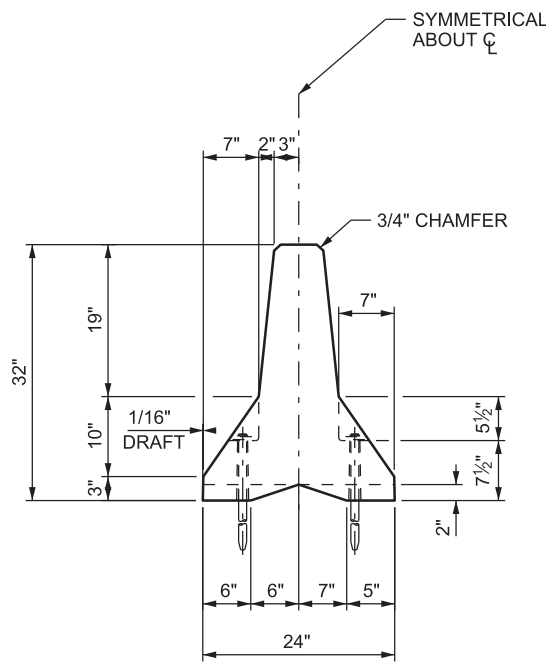


04-SEP-2019 D:\N:\Standard Drawings\Imperial\2017 Approved\Supplemental\Issues\SupplB Approved August - 2019\Backup\B02A.dgn



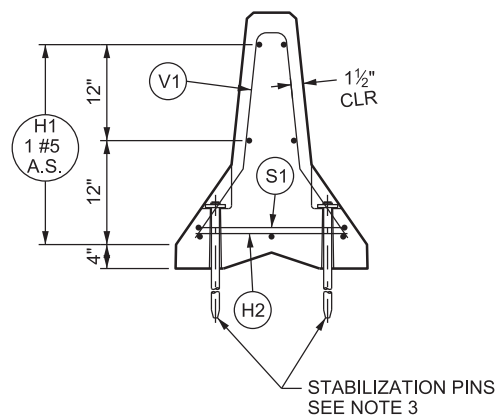
**ELEVATION**

BAR MARK	BAR SIZE	NO. BARS	LOCATION	SKETCH
H1	#5	7	HORIZONTAL IN BARRIER TIED INSIDE V1 BARS	19'-4"
H2	#4	3	ABOVE H1 BAR AND TIED TO V1 BAR	18"
S1	#4	2	HORIZONTAL AROUND BLOCK OUTS	18 1/4" 7 1/4" 12" 1 1/2" R, TYP
TOTAL LENGTH = 5'-3 1/2"				
V1	#5	16	VERTICAL IN BARRIER	3 3/4" 16" TYP 10 1/2" TYP 29° 12° 19" 8 5/8" 17"
TOTAL LENGTH = 4'-10 1/2"				



**SECTION A-A**

REBAR NOT SHOWN FOR CLARITY



**SECTION B-B**

**NOTES**

- SEE STD DWG BA 1A1 FOR GENERAL NOTES.
- SEE "BARRIER CONNECTION DETAILS" ON STD DWG BA 1A2 FOR CONNECTION LOOP DETAILS.
- SEE "BARRIER BLOCK OUT AND STABILIZATION PIN" ON STD DWG BA 1A2 FOR DETAILS.
- PROVIDE SCUPPERS WHEN NOTED ON PLANS. DO NOT USE BARRIER SEAL WHEN SCUPPERS ARE PRESENT ON BARRIER.
- EACH BARRIER UNIT WEIGHS 3.9 TONS.

**SUPPLEMENTAL DRAWING**

REVISIONS	
NO.	DATE
1	08/29/19
SDD MODIFIED DESIGN ONLY NOTES TO NOTES.	

**UTAH DEPARTMENT OF TRANSPORTATION**  
STANDARD DRAWINGS FOR ROAD AND BRIDGE CONSTRUCTION  
SALT LAKE CITY, UTAH

RECOMMENDED FOR APPROVAL: *[Signature]*  
CHAIRMAN STANDARDS COMMITTEE APPROVED

DEPUTY DIRECTOR

DATE: AUG. 29, 2019

**PRECAST CONCRETE BARRIER - 32 INCH NEW JERSEY SHAPE**

STANDARD DRAWING TITLE

STD. DWG. NO. BA 2A