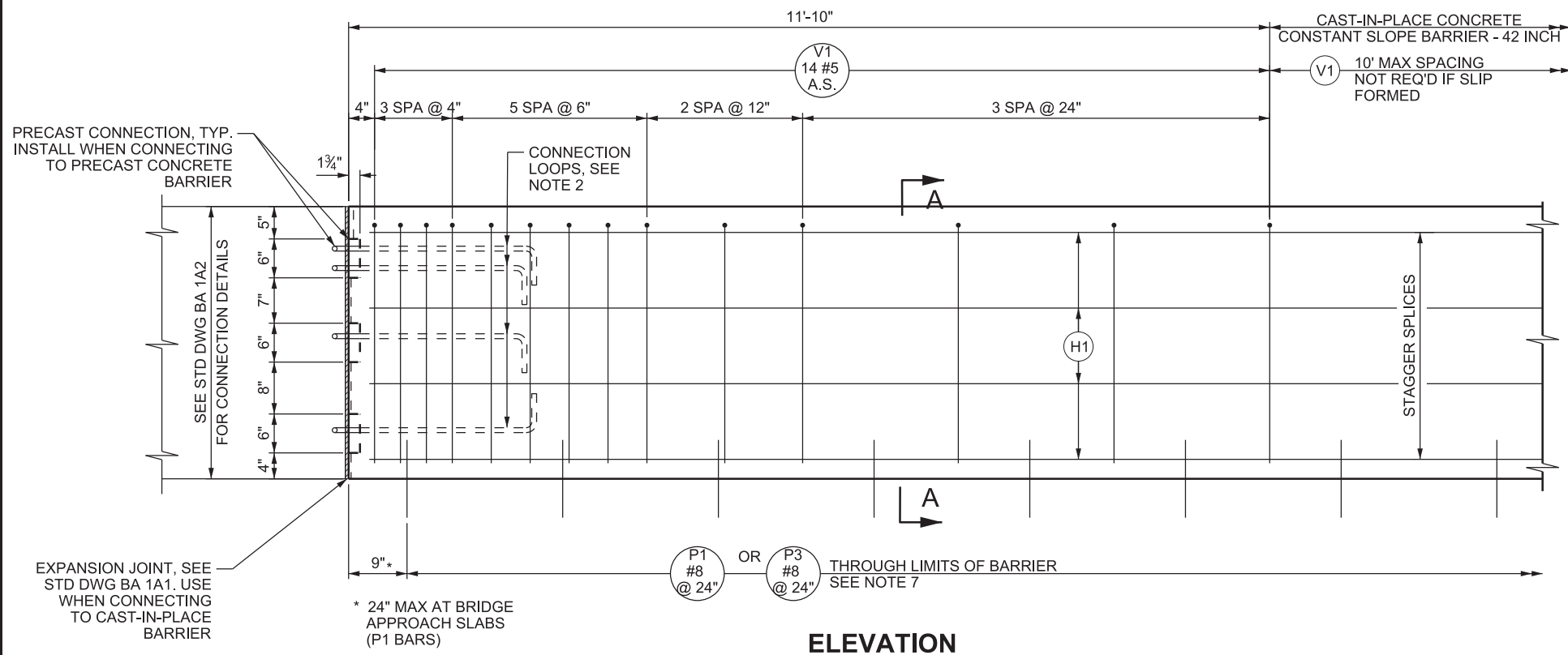
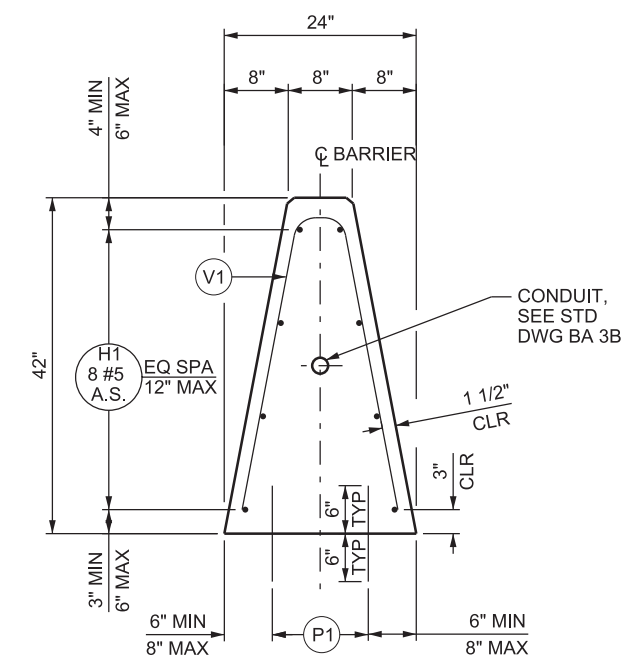


04-SEP-2019 D:\N\_Files\Standard Drawings\Imperial\2017 Approved\Supplemental\Issues\SupplB Approved August - 2019\Backup\B03A1.dgn

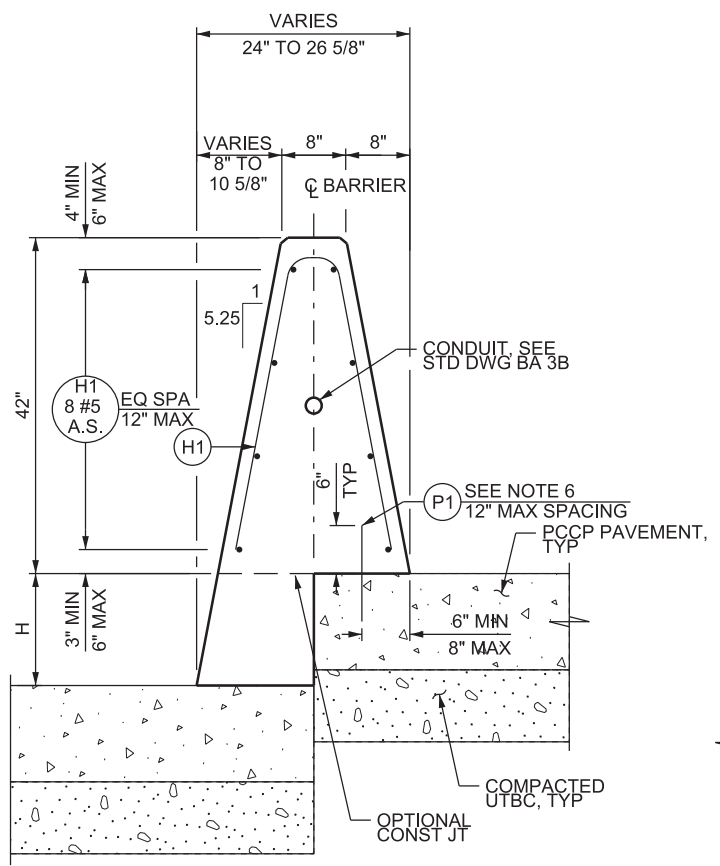


**ELEVATION**

42" CONSTANT SLOPE BARRIER SHOWN, STEPPED MEDIAN BARRIER SIMILAR

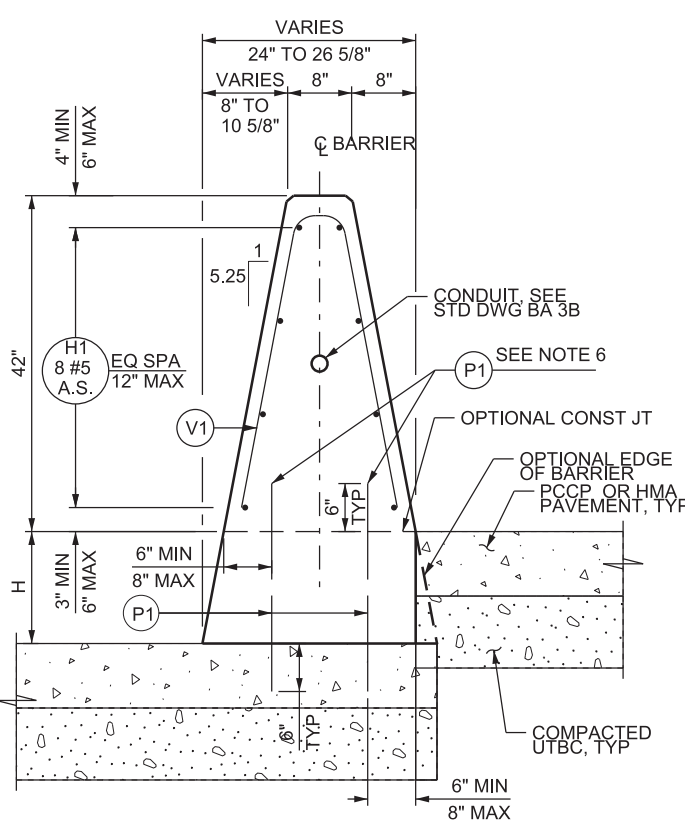


**SECTION A-A**



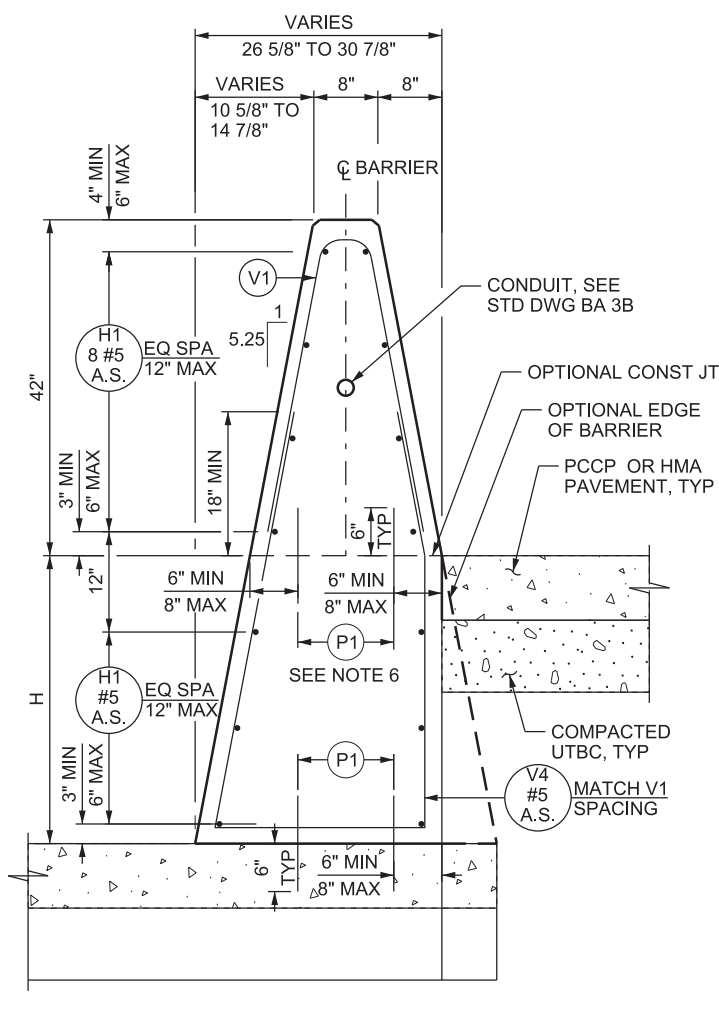
**STEPPED MEDIAN BARRIER**

H = 0" TO 14" (PCCP ONLY)



**STEPPED MEDIAN BARRIER**

H = 0" TO 14" (PCCP HMA)



**STEPPED MEDIAN BARRIER**

H = 14" TO 36"

**NOTES**

1. SEE STD DWG BA 1A1 FOR GENERAL NOTES.
2. SEE "BARRIER CONNECTION DETAILS" ON STD DWG BA 1A2 FOR CONNECTION LOOP DETAILS.
3. SEE STD DWG BA 3A2 FOR ADDITIONAL END SECTION DETAILS.
4. SEE STD DWG BA 3A3 FOR REINFORCING SCHEDULE AND NOTES.
5. V4 BAR SPACING MATCHES V1 SPACING SHOWN IN ELEVATION.
6. P1 BARS THROUGH THE OPTIONAL CONSTRUCTION JOINT ARE NOT REQUIRED IF THE CONSTRUCTION JOINT IS NOT USED OR IF THE V4 BARS ARE PRESENT.
7. USE A MAXIMUM OF 12 INCH SPACING FOR P1 BARS. SEE STEPPED MEDIAN BARRIER DETAILS FOR APPLICABLE LOCATION.

**SUPPLEMENTAL DRAWING**

REVISIONS		DATE		APPR.		REMARKS	
NO.	DATE	NO.	DATE	NO.	DATE	NO.	DATE
1	08/29/19						

**UTAH DEPARTMENT OF TRANSPORTATION**  
STANDARD DRAWINGS FOR ROAD AND BRIDGE CONSTRUCTION  
SALT LAKE CITY, UTAH

RECOMMENDED FOR APPROVAL: *[Signature]*  
CHAIRMAN STANDARDS COMMITTEE APPROVED

DEPUTY DIRECTOR

DATE	AUG. 29, 2019
DATE	AUG. 29, 2019

**CAST-IN-PLACE CONCRETE CONSTANT SLOPE BARRIER - 42 INCH**  
1 OF 3

STANDARD DRAWING TITLE

STD. DWG. NO. BA 3A1