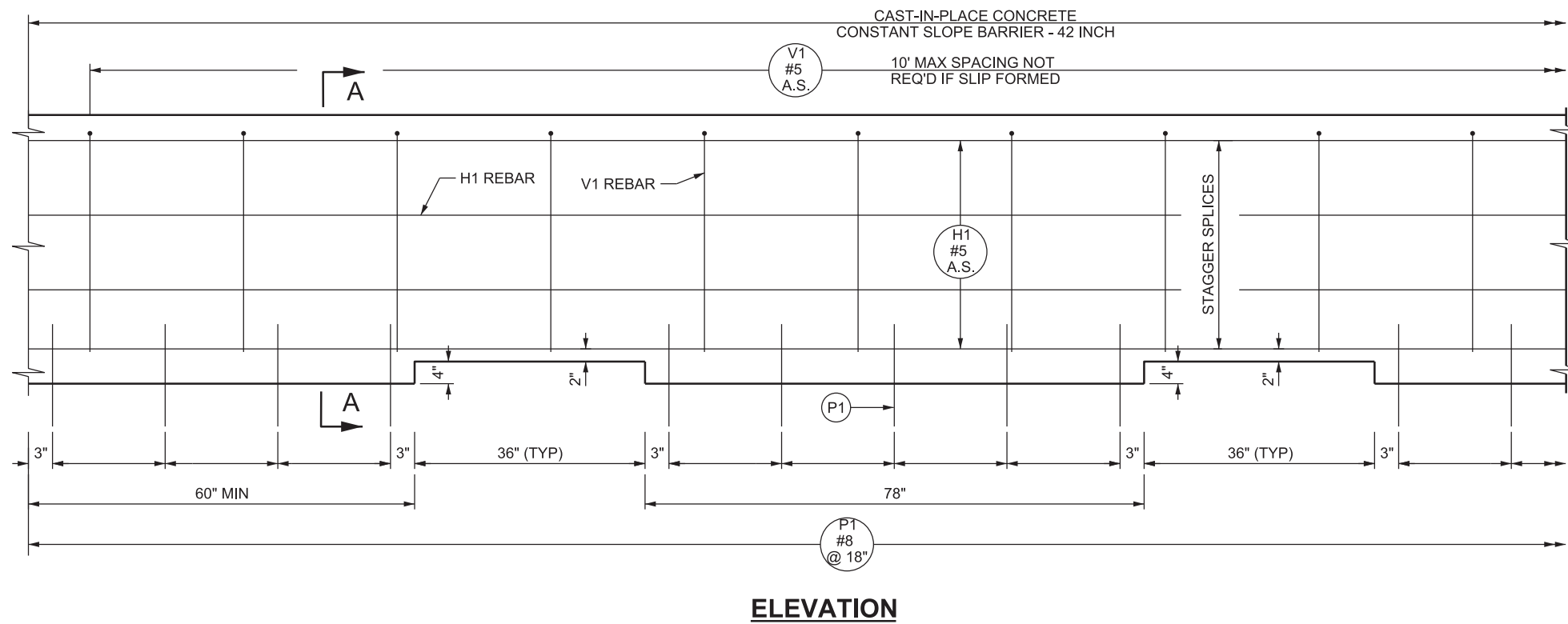
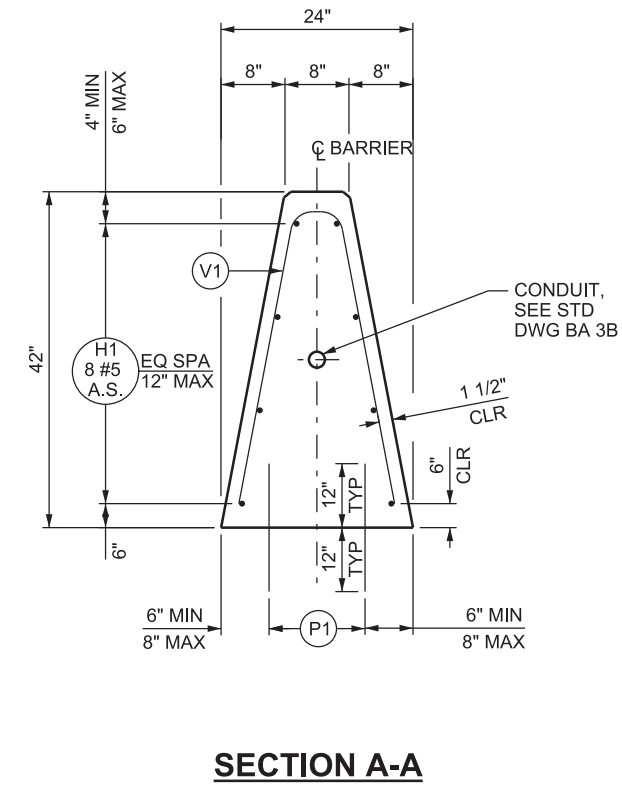
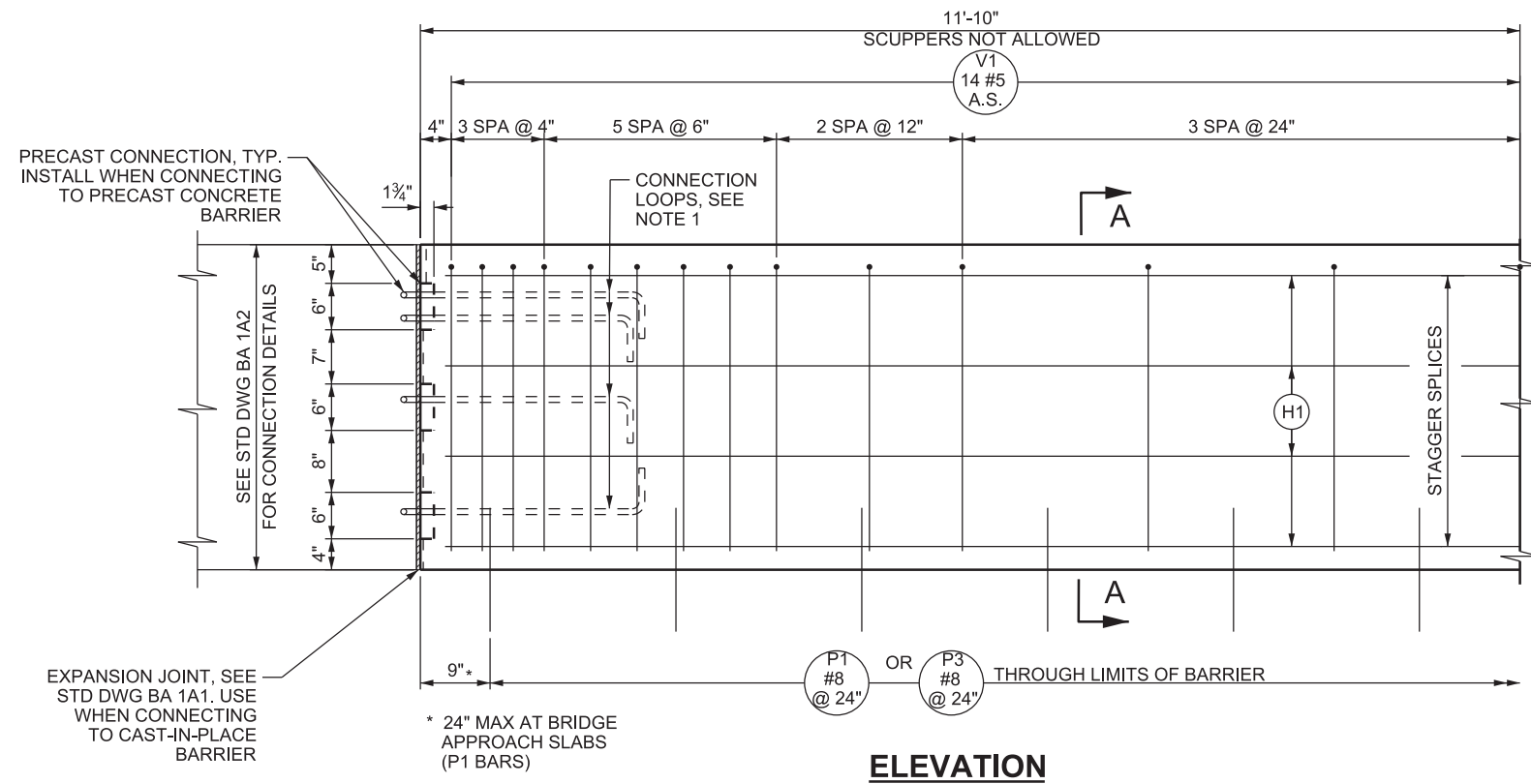


04-SEP-2019 DCN File: L:\Standard Drawings\Imperial\2017 Approved\Supplemental\Issues\SupplB Approved August - 2019\Backup\B03A4.dgn



- NOTES:**
1. SEE "BARRIER CONNECTION DETAILS" ON STD DWG BA 1A2 FOR CONNECTION LOOP DETAILS.
  2. DRILL AND EPOXY BOND P1 BARS OR HAND POSITION WHILE CONCRETE IS IN A WORKABLE FORM WHEN USING PCCP PAVEMENT.
  3. SEE STD DWG BA 3A3 FOR REINFORCING STEEL SCHEDULE AND NOTES.
  4. DO NOT USE BARRIER SEAL WHEN SCUPPERS ARE PRESENT ON BARRIER.
  5. SEE STD DWG BA 3A2 FOR APPROACH AND TRAILING END TREATMENTS. NO EXPANSION JOINT REQUIRED.
  6. SEE STD DWG BA 1A1 FOR GENERAL NOTES.

<b>UTAH DEPARTMENT OF TRANSPORTATION</b>	
STANDARD DRAWINGS FOR ROAD AND BRIDGE CONSTRUCTION SALT LAKE CITY, UTAH	
RECOMMENDED FOR APPROVAL  CHAIRMAN STANDARDS COMMITTEE APPROVED	DATE AUG. 29, 2019 DEPUTY DIRECTOR
STANDARD DRAWING TITLE	
<b>CAST-IN-PLACE CONCRETE CONSTANT SLOPE BARRIER WITH SCUPPERS - 42 INCH</b>	
STD. DWG. NO. <b>BA 3A4</b>	

NO.	DATE	APPR.	REMARKS
1	08/29/19		MODIFIED DESIGN ONLY NOTES TO CONSTRUCTION NOTES.

SUPPLEMENTAL DRAWING