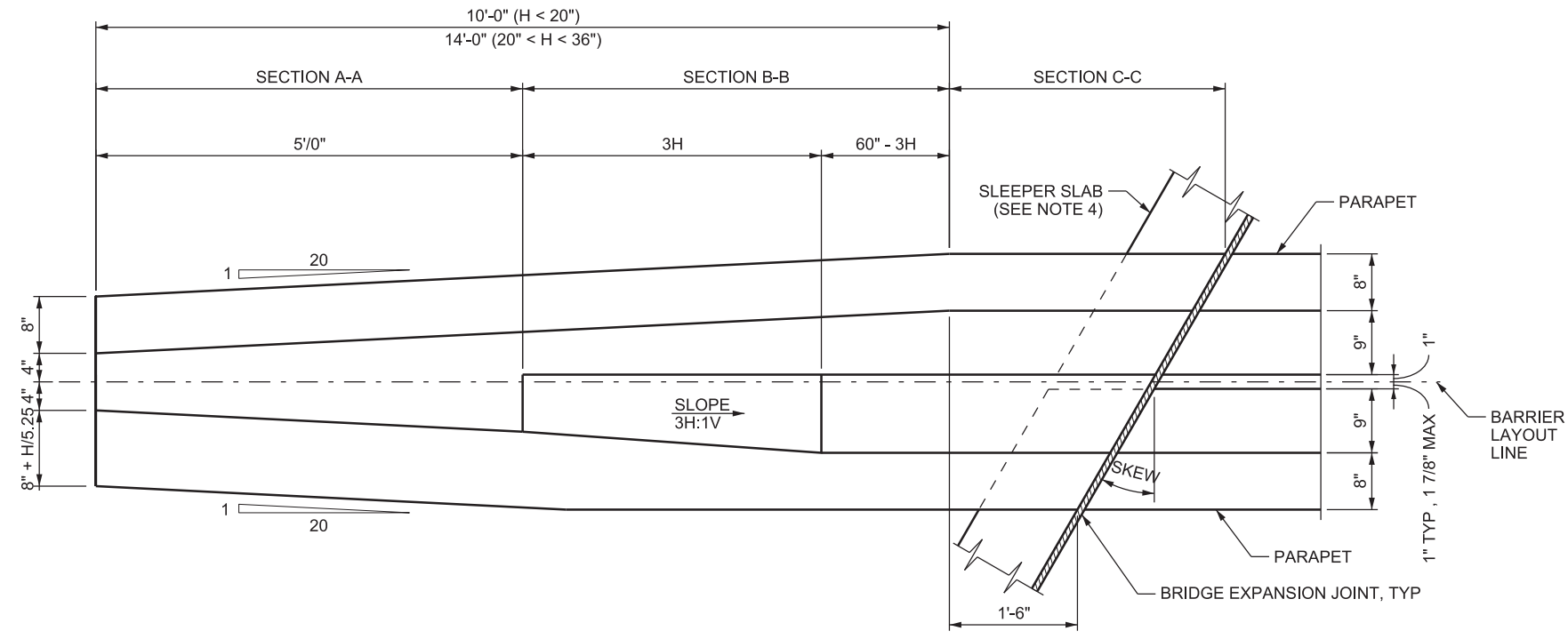
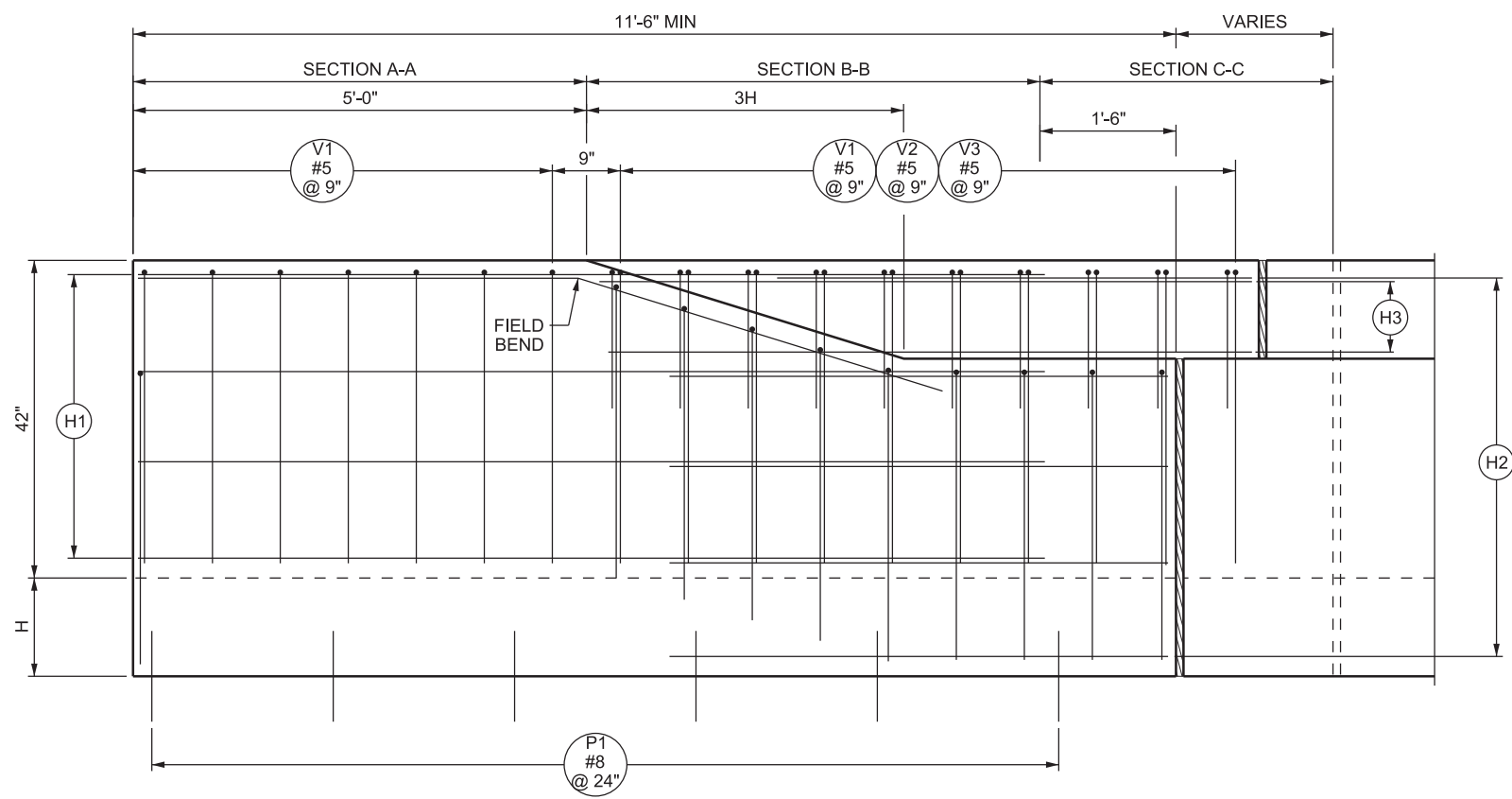


04-SEP-2019 DCN File: L:\Standard Drawings\Imperial\2017 Approved\Supplemental\_Issues\SupplB Approved August - 2019\Backup\B03F1.dgn



**PLAN - SKEW < 30°**



**ELEVATION - SKEW < 30°**

- NOTES**
1. SEE STD DWG BA 1A1 FOR GENERAL NOTES.
  2. SEE STD DWG BA 3F3 FOR SECTIONS AND REINFORCING STEEL SCHEDULE.
  3. SLEEPER SLAB ENDS AT FACE OF PARAPET FOR H GREATER THAN 14 INCHES.

**SUPPLEMENTAL DRAWING**

REVISIONS		NO.	DATE	APPR.	REMARKS
1	08/29/19	SDD			MOVED DESIGN ONLY NOTE TO NOTES.

**UTAH DEPARTMENT OF TRANSPORTATION**  
STANDARD DRAWINGS FOR ROAD AND BRIDGE CONSTRUCTION  
SALT LAKE CITY, UTAH

RECOMMENDED FOR APPROVAL \_\_\_\_\_ DATE AUG. 29, 2019

CHAIRMAN STANDARDS COMMITTEE APPROVED \_\_\_\_\_ DATE AUG. 29, 2019

DEPUTY DIRECTOR \_\_\_\_\_ DATE \_\_\_\_\_

**CAST-IN-PLACE CONCRETE  
CONSTANT SLOPE BARRIER  
- 42 INCH, BRIDGE  
PARAPET TRANSITION  
1 OF 3**

STANDARD DRAWING TITLE

STD. DWG. NO. **BA 3F1**