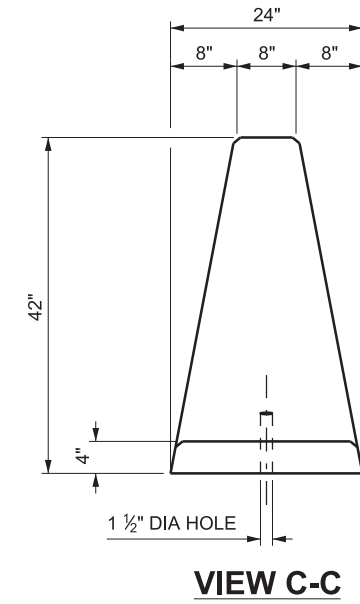
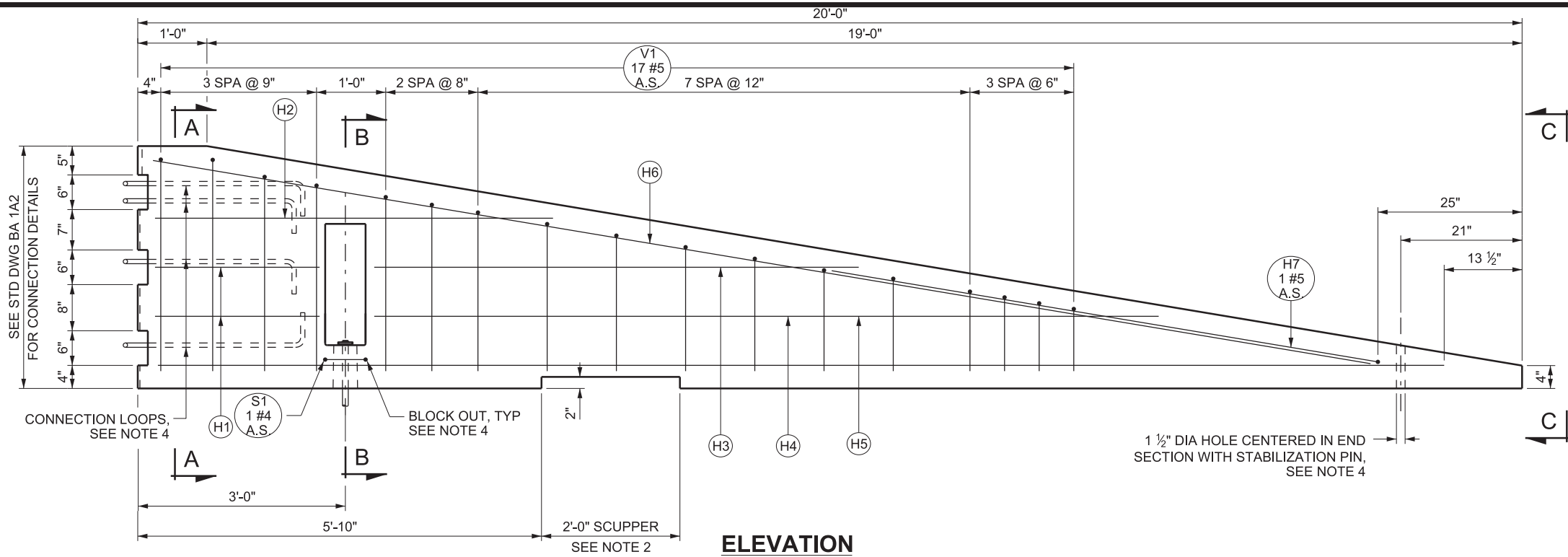
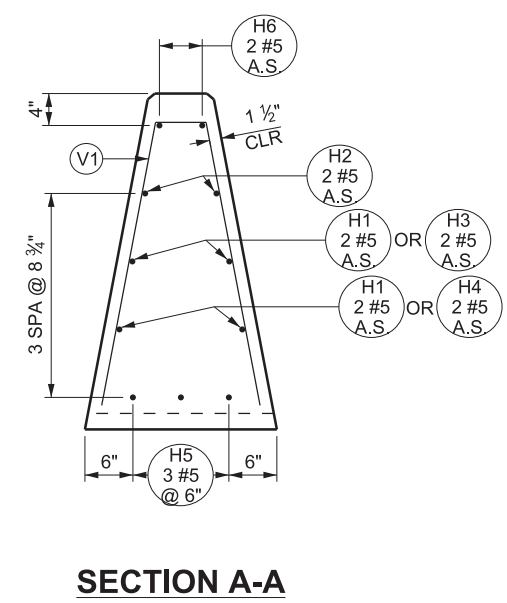


DCN File: L:\Standard Drawings\Imperial\2017 Approved\Supplemental\Issues\SupplB Approved August - 2019\Backup\B03H.dgn 04-SEP-2019

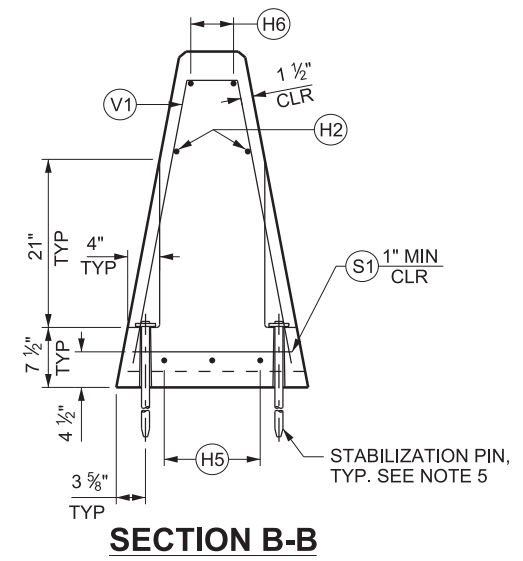


ELEVATION

VIEW C-C



SECTION A-A



SECTION B-B

BAR MARK	BAR SIZE	NO. BARS	LOCATION	SKETCH																																																																				
H1	#5	4	HORIZONTAL IN BARRIER TIED INSIDE V1 BARS																																																																					
H2	#5	2	HORIZONTAL IN BARRIER TIED INSIDE V1 BARS																																																																					
H3	#5	2	HORIZONTAL IN BARRIER TIED INSIDE V1 BARS																																																																					
H4	#5	2	HORIZONTAL IN BARRIER TIED INSIDE V1 BARS																																																																					
H5	#5	3	HORIZONTAL IN BARRIER TIED INSIDE V1 BARS																																																																					
H6	#5	2	HORIZONTAL IN BARRIER TIED INSIDE V1 BARS																																																																					
H7	#5	1	HORIZONTAL IN BARRIER ALONG TOP SLOPE																																																																					
			TOTAL LENGTH = 17'-7 1/2"																																																																					
S1	#4	1	HORIZONTAL AROUND BARRIER STABILIZATION SLOTS																																																																					
			TOTAL LENGTH = 5'-7"																																																																					
V1	#5	17	VERTICAL IN BARRIER	<table border="1"> <thead> <tr> <th>H</th> <th>W1</th> <th>W2</th> <th>QTY</th> </tr> </thead> <tbody> <tr><td>37"</td><td>7"</td><td>5 1/2"</td><td>2</td></tr> <tr><td>35 1/2"</td><td>6 1/2"</td><td>6 1/2"</td><td>1</td></tr> <tr><td>34"</td><td>6 1/2"</td><td>6 1/2"</td><td>1</td></tr> <tr><td>32 1/2"</td><td>6"</td><td>7 1/2"</td><td>1</td></tr> <tr><td>30 1/2"</td><td>5 1/2"</td><td>8 1/2"</td><td>1</td></tr> <tr><td>29"</td><td>5 1/2"</td><td>8 1/2"</td><td>1</td></tr> <tr><td>27"</td><td>5"</td><td>9 1/2"</td><td>1</td></tr> <tr><td>25"</td><td>4 1/2"</td><td>10 1/2"</td><td>1</td></tr> <tr><td>23"</td><td>4"</td><td>11 1/2"</td><td>1</td></tr> <tr><td>21"</td><td>4"</td><td>11 1/2"</td><td>1</td></tr> <tr><td>19"</td><td>3 1/2"</td><td>12 1/2"</td><td>1</td></tr> <tr><td>17"</td><td>3"</td><td>13 1/2"</td><td>1</td></tr> <tr><td>15"</td><td>2 1/2"</td><td>14 1/2"</td><td>1</td></tr> <tr><td>14"</td><td>2 1/2"</td><td>14 1/2"</td><td>1</td></tr> <tr><td>13"</td><td>2"</td><td>15 1/2"</td><td>1</td></tr> <tr><td>12"</td><td>2"</td><td>15 1/2"</td><td>1</td></tr> </tbody> </table>	H	W1	W2	QTY	37"	7"	5 1/2"	2	35 1/2"	6 1/2"	6 1/2"	1	34"	6 1/2"	6 1/2"	1	32 1/2"	6"	7 1/2"	1	30 1/2"	5 1/2"	8 1/2"	1	29"	5 1/2"	8 1/2"	1	27"	5"	9 1/2"	1	25"	4 1/2"	10 1/2"	1	23"	4"	11 1/2"	1	21"	4"	11 1/2"	1	19"	3 1/2"	12 1/2"	1	17"	3"	13 1/2"	1	15"	2 1/2"	14 1/2"	1	14"	2 1/2"	14 1/2"	1	13"	2"	15 1/2"	1	12"	2"	15 1/2"	1
H	W1	W2	QTY																																																																					
37"	7"	5 1/2"	2																																																																					
35 1/2"	6 1/2"	6 1/2"	1																																																																					
34"	6 1/2"	6 1/2"	1																																																																					
32 1/2"	6"	7 1/2"	1																																																																					
30 1/2"	5 1/2"	8 1/2"	1																																																																					
29"	5 1/2"	8 1/2"	1																																																																					
27"	5"	9 1/2"	1																																																																					
25"	4 1/2"	10 1/2"	1																																																																					
23"	4"	11 1/2"	1																																																																					
21"	4"	11 1/2"	1																																																																					
19"	3 1/2"	12 1/2"	1																																																																					
17"	3"	13 1/2"	1																																																																					
15"	2 1/2"	14 1/2"	1																																																																					
14"	2 1/2"	14 1/2"	1																																																																					
13"	2"	15 1/2"	1																																																																					
12"	2"	15 1/2"	1																																																																					

NOTES:

- SEE STD DWG BA 1A1 AND BA 1A2 FOR GENERAL NOTES.
- PROVIDE SCUPPERS WHEN NOTED ON PLANS. DO NOT USE BARRIER SEAL WHEN SCUPPERS ARE PRESENT ON BARRIER.
- SEE "BARRIER CONNECTION DETAILS" ON STD DWG BA 1A2 FOR CONNECTION LOOP DETAILS.
- SEE "BARRIER BLOCK OUT AND STABILIZATION PIN" ON STD DWG BA 1A2 FOR DETAILS. XX
- INSTALL STABILIZATION PINS IN ALL APPLICATIONS.
- EACH BARRIER UNIT WEIGHS 4.0 TONS.

REVISIONS		DATE		APPR.		REMARKS	
NO.	DATE	NO.	DATE	NO.	DATE	NO.	DATE
1	08/29/19						

UTAH DEPARTMENT OF TRANSPORTATION
STANDARD DRAWINGS FOR ROAD AND BRIDGE CONSTRUCTION
SALT LAKE CITY, UTAH

RECOMMENDED FOR APPROVAL:

CHAIRMAN STANDARDS COMMITTEE APPROVED

DEPUTY DIRECTOR:

DATE: AUG. 29, 2019

**PRECAST CONCRETE
CONSTANT SLOPE
BARRIER - 42 INCH,
SLOPED END SECTION
(FOR SPEEDS ≤ 40 MPH)**

STANDARD DRAWING TITLE