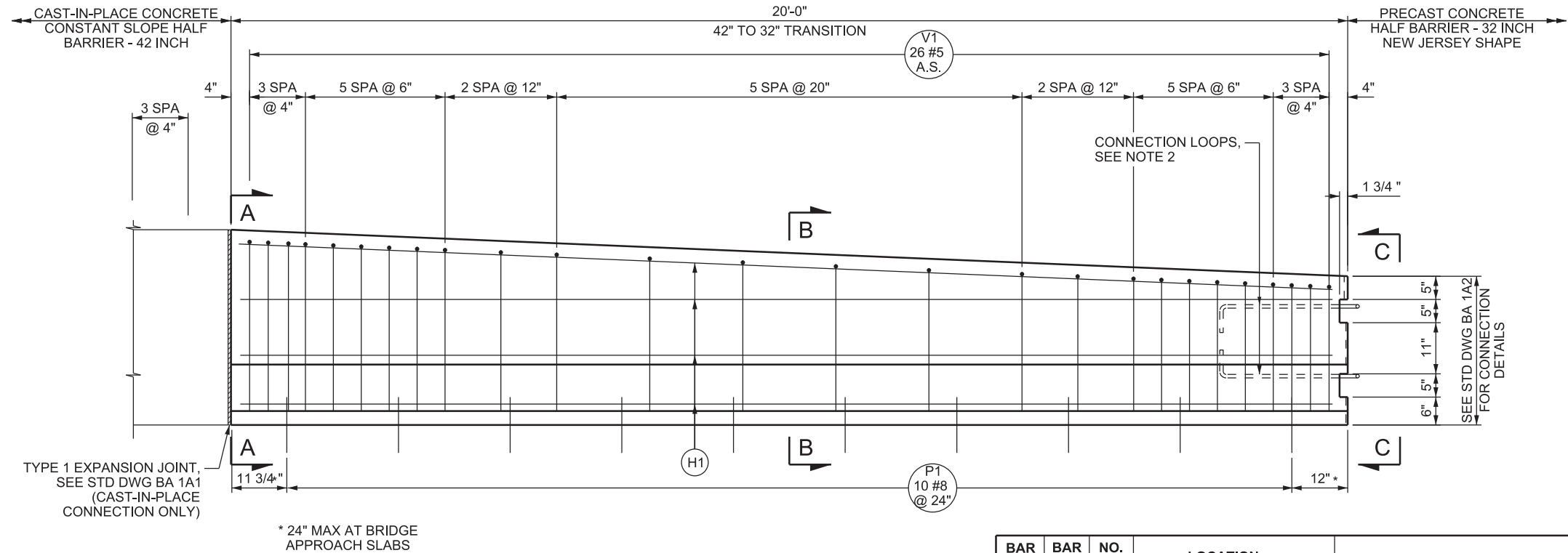
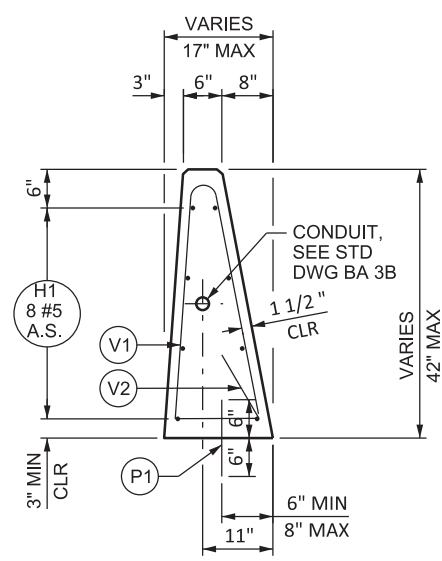


04-SEP-2019 DGN File: L:\Standard Drawings\Imperial\2017 Approved\Supplemental\Issues\SupplB Approved August - 2019\Backup\B02025.dgn

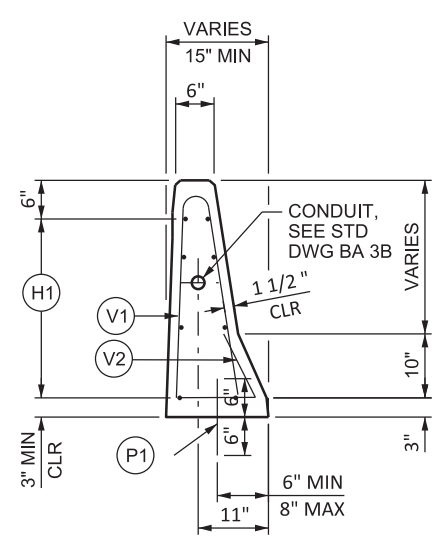


* 24" MAX AT BRIDGE APPROACH SLABS

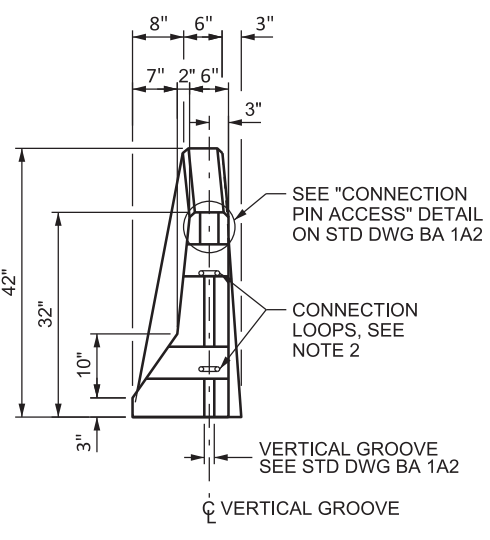
ELEVATION



SECTION A-A



SECTION B-B



VIEW C-C

BAR MARK	BAR SIZE	NO. BARS	LOCATION	SKETCH																																																																											
P1	#8	10	PAVEMENT TO BARRIER THROUGH LIMITS OF BARRIER (VERTICAL)	<p>OPTION 1 OPTION 2</p>																																																																											
H1	#5	8	HORIZONTAL IN BARRIER TIED INSIDE V1 BARS CONTINUOUS THROUGH LENGTH OF BARRIER	<p>36" SPLICE</p>																																																																											
V1	#5	26	VERTICAL IN BARRIER	<table border="1"> <thead> <tr> <th>H</th> <th>W</th> <th>QTY</th> </tr> </thead> <tbody> <tr><td>36 1/2"</td><td>13"</td><td>1</td></tr> <tr><td>36 1/2"</td><td>13"</td><td>1</td></tr> <tr><td>36 1/2"</td><td>12 1/2"</td><td>1</td></tr> <tr><td>36"</td><td>12 1/2"</td><td>1</td></tr> <tr><td>36"</td><td>12 1/2"</td><td>1</td></tr> <tr><td>35 1/2"</td><td>12"</td><td>1</td></tr> <tr><td>35"</td><td>12"</td><td>1</td></tr> <tr><td>35"</td><td>11 1/2"</td><td>1</td></tr> <tr><td>34 1/2"</td><td>11 1/2"</td><td>1</td></tr> <tr><td>34"</td><td>11"</td><td>1</td></tr> <tr><td>33"</td><td>10 1/2"</td><td>1</td></tr> <tr><td>32"</td><td>9 1/2"</td><td>1</td></tr> <tr><td>31 1/2"</td><td>9"</td><td>1</td></tr> <tr><td>30 1/2"</td><td>8 1/2"</td><td>1</td></tr> <tr><td>29 1/2"</td><td>8"</td><td>1</td></tr> <tr><td>29"</td><td>8"</td><td>1</td></tr> <tr><td>29"</td><td>7 1/2"</td><td>1</td></tr> <tr><td>28 1/2"</td><td>7"</td><td>1</td></tr> <tr><td>28"</td><td>7"</td><td>1</td></tr> <tr><td>28"</td><td>7"</td><td>1</td></tr> <tr><td>27 1/2"</td><td>6 1/2"</td><td>1</td></tr> <tr><td>27 1/2"</td><td>6 1/2"</td><td>1</td></tr> <tr><td>27"</td><td>6"</td><td>1</td></tr> <tr><td>27"</td><td>6"</td><td>1</td></tr> </tbody> </table> <p>OPTION 1 OPTION 2</p>	H	W	QTY	36 1/2"	13"	1	36 1/2"	13"	1	36 1/2"	12 1/2"	1	36"	12 1/2"	1	36"	12 1/2"	1	35 1/2"	12"	1	35"	12"	1	35"	11 1/2"	1	34 1/2"	11 1/2"	1	34"	11"	1	33"	10 1/2"	1	32"	9 1/2"	1	31 1/2"	9"	1	30 1/2"	8 1/2"	1	29 1/2"	8"	1	29"	8"	1	29"	7 1/2"	1	28 1/2"	7"	1	28"	7"	1	28"	7"	1	27 1/2"	6 1/2"	1	27 1/2"	6 1/2"	1	27"	6"	1	27"	6"	1
H	W	QTY																																																																													
36 1/2"	13"	1																																																																													
36 1/2"	13"	1																																																																													
36 1/2"	12 1/2"	1																																																																													
36"	12 1/2"	1																																																																													
36"	12 1/2"	1																																																																													
35 1/2"	12"	1																																																																													
35"	12"	1																																																																													
35"	11 1/2"	1																																																																													
34 1/2"	11 1/2"	1																																																																													
34"	11"	1																																																																													
33"	10 1/2"	1																																																																													
32"	9 1/2"	1																																																																													
31 1/2"	9"	1																																																																													
30 1/2"	8 1/2"	1																																																																													
29 1/2"	8"	1																																																																													
29"	8"	1																																																																													
29"	7 1/2"	1																																																																													
28 1/2"	7"	1																																																																													
28"	7"	1																																																																													
28"	7"	1																																																																													
27 1/2"	6 1/2"	1																																																																													
27 1/2"	6 1/2"	1																																																																													
27"	6"	1																																																																													
27"	6"	1																																																																													
V2	#5	18	VERTICAL IN BARRIER TIE TO V1 BARS TOTAL LENGTH = 2'-1"																																																																												

- NOTES:**
- SEE STD DWG BA 1A1 FOR GENERAL NOTES.
 - SEE "BARRIER CONNECTION DETAILS" ON STD DWG BA 1A2 FOR CONNECTION LOOP DETAILS. PLACE THE APPROPRIATE CONNECTION LOOP CONFIGURATION THAT CORRESPONDS WITH ADJACENT PRECAST BARRIER.
 - BARRIER SHAPE VARIES LINEARLY OVER LENGTH OF BARRIER TRANSITION.
 - BARRIER TRANSITIONS MAY BE LENGTHENED, WITH ENGINEER'S APPROVAL, TO ELIMINATE A GAP BETWEEN PRECAST AND CAST-IN-PLACE SECTIONS.
 - DRILL AND EPOXY BOND P1 BARS OR HAND POSITION WHILE CONCRETE IS IN A WORKABLE FORM WHEN USING PCCP PAVEMENT.

SUPPLEMENTAL DRAWING

UTAH DEPARTMENT OF TRANSPORTATION STANDARD DRAWINGS FOR ROAD AND BRIDGE CONSTRUCTION SALT LAKE CITY, UTAH	RECOMMENDED FOR APPROVAL CHAIRMAN STANDARDS COMMITTEE APPROVED	AUG. 29, 2019 DATE AUG. 29, 2019 DATE	DEPUTY DIRECTOR STANDARD DRAWING TITLE	CAST-IN-PLACE CONCRETE HALF BARRIER - 42 INCH CONSTANT SLOPE, 32 INCH NEW JERSEY SHAPE BARRIER TRANSITION
REVISIONS 1 08/29/19 SDD 1 MOVED DESIGN ONLY NOTE TO NOTES.	1 08/29/19 SDD 1 MOVED DESIGN ONLY NOTE TO NOTES.			

STD. DWG. NO. **BA 3K5**