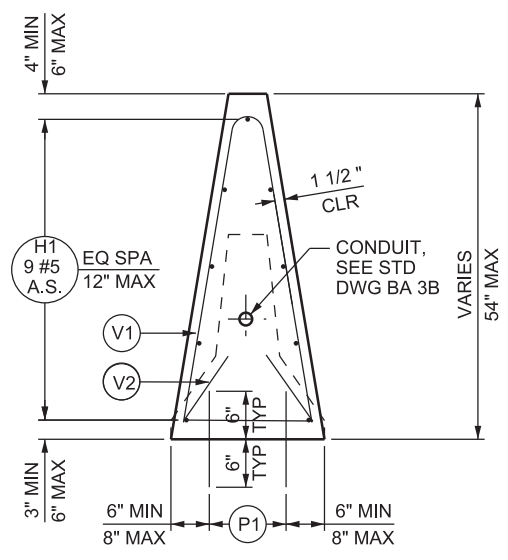
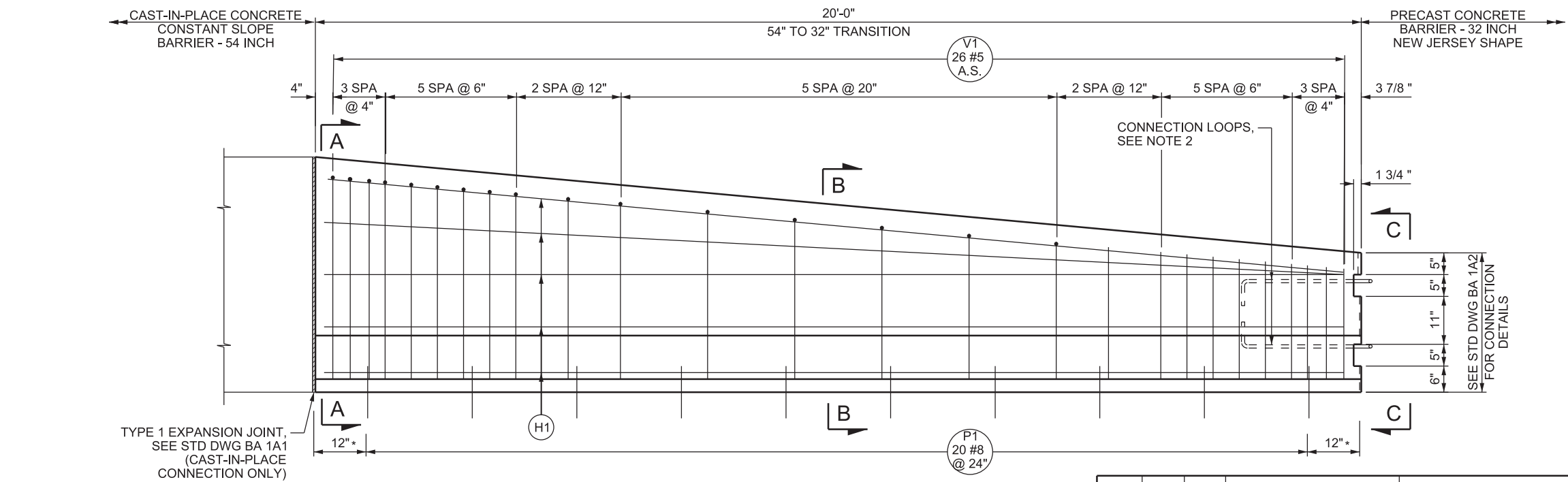
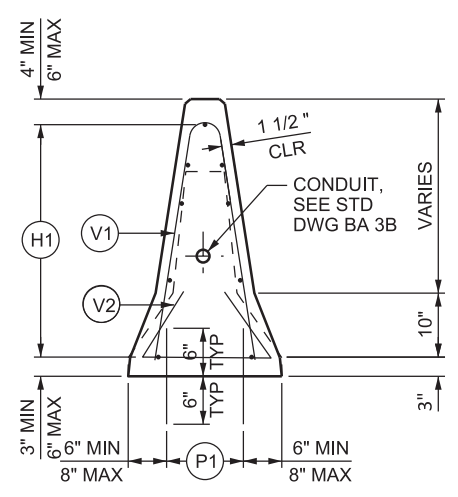


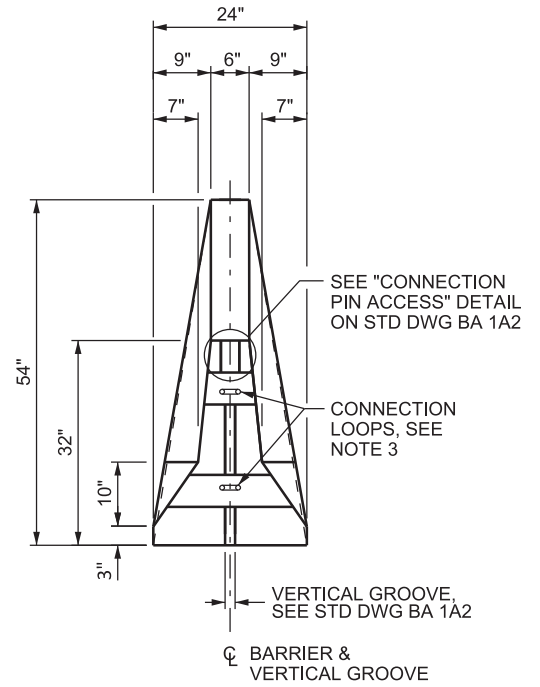
04-SEP-2019 D:\N\Standard Drawings\Imperial\2017 Approved\Supplemental\Issues\SupplB Approved August - 2019\Backup\B0302.dgn



SECTION A-A



SECTION B-B



VIEW C-C

ELEVATION

BAR MARK	BAR SIZE	NO. BARS	LOCATION	SKETCH																																																																																	
H1	#5	9	HORIZONTAL IN BARRIER TIED INSIDE V1 BARS																																																																																		
P1	#8	20	PAVEMENT TO BARRIER THROUGH LIMITS OF BARRIER (VERTICAL)	 OPTION 1 OPTION 2																																																																																	
V1	#5	26	VERTICAL IN BARRIER	<table border="1"> <thead> <tr> <th>H</th> <th>W</th> <th>QTY</th> </tr> </thead> <tbody> <tr><td>46 1/2"</td><td>19 1/2"</td><td>1</td></tr> <tr><td>46"</td><td>19 1/2"</td><td>1</td></tr> <tr><td>46"</td><td>19"</td><td>1</td></tr> <tr><td>45 1/2"</td><td>19"</td><td>1</td></tr> <tr><td>45"</td><td>19"</td><td>1</td></tr> <tr><td>44 1/2"</td><td>18 1/2"</td><td>1</td></tr> <tr><td>44"</td><td>18"</td><td>1</td></tr> <tr><td>43 1/2"</td><td>18"</td><td>1</td></tr> <tr><td>42 1/2"</td><td>17 1/2"</td><td>1</td></tr> <tr><td>41 1/2"</td><td>17"</td><td>1</td></tr> <tr><td>40 1/2"</td><td>16 1/2"</td><td>1</td></tr> <tr><td>38 1/2"</td><td>15 1/2"</td><td>1</td></tr> <tr><td>37"</td><td>15"</td><td>1</td></tr> <tr><td>35"</td><td>14"</td><td>1</td></tr> <tr><td>33"</td><td>13"</td><td>1</td></tr> <tr><td>31 1/2"</td><td>12"</td><td>1</td></tr> <tr><td>30"</td><td>11 1/2"</td><td>1</td></tr> <tr><td>29"</td><td>11"</td><td>1</td></tr> <tr><td>28 1/2"</td><td>11"</td><td>1</td></tr> <tr><td>28"</td><td>10 1/2"</td><td>1</td></tr> <tr><td>27 1/2"</td><td>10"</td><td>1</td></tr> <tr><td>27"</td><td>10"</td><td>1</td></tr> <tr><td>26 1/2"</td><td>9 1/2"</td><td>1</td></tr> <tr><td>26"</td><td>9 1/2"</td><td>1</td></tr> <tr><td>25 1/2"</td><td>9"</td><td>1</td></tr> <tr><td>25"</td><td>9"</td><td>1</td></tr> </tbody> </table> 	H	W	QTY	46 1/2"	19 1/2"	1	46"	19 1/2"	1	46"	19"	1	45 1/2"	19"	1	45"	19"	1	44 1/2"	18 1/2"	1	44"	18"	1	43 1/2"	18"	1	42 1/2"	17 1/2"	1	41 1/2"	17"	1	40 1/2"	16 1/2"	1	38 1/2"	15 1/2"	1	37"	15"	1	35"	14"	1	33"	13"	1	31 1/2"	12"	1	30"	11 1/2"	1	29"	11"	1	28 1/2"	11"	1	28"	10 1/2"	1	27 1/2"	10"	1	27"	10"	1	26 1/2"	9 1/2"	1	26"	9 1/2"	1	25 1/2"	9"	1	25"	9"	1
H	W	QTY																																																																																			
46 1/2"	19 1/2"	1																																																																																			
46"	19 1/2"	1																																																																																			
46"	19"	1																																																																																			
45 1/2"	19"	1																																																																																			
45"	19"	1																																																																																			
44 1/2"	18 1/2"	1																																																																																			
44"	18"	1																																																																																			
43 1/2"	18"	1																																																																																			
42 1/2"	17 1/2"	1																																																																																			
41 1/2"	17"	1																																																																																			
40 1/2"	16 1/2"	1																																																																																			
38 1/2"	15 1/2"	1																																																																																			
37"	15"	1																																																																																			
35"	14"	1																																																																																			
33"	13"	1																																																																																			
31 1/2"	12"	1																																																																																			
30"	11 1/2"	1																																																																																			
29"	11"	1																																																																																			
28 1/2"	11"	1																																																																																			
28"	10 1/2"	1																																																																																			
27 1/2"	10"	1																																																																																			
27"	10"	1																																																																																			
26 1/2"	9 1/2"	1																																																																																			
26"	9 1/2"	1																																																																																			
25 1/2"	9"	1																																																																																			
25"	9"	1																																																																																			
V2	#5	18	VERTICAL IN BARRIER TIE TO V1 BARS	 TOTAL LENGTH = 3'-7 1/2"																																																																																	

NOTES

- SEE STD DWG BA 1A1 FOR GENERAL NOTES.
- SEE "BARRIER CONNECTION DETAILS" ON STD DWG BA 1A2 FOR CONNECTION LOOP DETAILS. PLACE THE APPROPRIATE CONNECTION LOOP CONFIGURATION THAT CORRESPONDS WITH ADJACENT PRECAST BARRIER.
- BARRIER SHAPE VARIES LINEARLY OVER LENGTH OF BARRIER TRANSITION.
- BARRIER TRANSITIONS MAY BE LENGTHENED, WITH ENGINEER'S APPROVAL, TO ELIMINATE A GAP BETWEEN PRECAST AND CAST-IN-PLACE SECTIONS.
- DRILL AND EPOXY BOND P1 BARS OR HAND POSITION WHILE CONCRETE IS IN A WORKABLE FORM WHEN USING PCCP PAVEMENT.
- THE ENGINEER APPROVES CONTRACTOR DEvised METHOD OF POSITIONING THE LONGITUDINAL REINFORCING STEEL ±1/2 INCH AS DIMENSIONED.

SUPPLEMENTAL DRAWING

NO.	DATE	APPR.	REMARKS
1	08/29/19	SDD	MODIFIED DESIGN ONLY NOTES TO NOTES.

UTAH DEPARTMENT OF TRANSPORTATION
 STANDARD DRAWINGS FOR ROAD AND BRIDGE CONSTRUCTION
 SALT LAKE CITY, UTAH

RECOMMENDED FOR APPROVAL:

CHAIRMAN STANDARDS COMMITTEE APPROVED

DEPUTY DIRECTOR

DATE: AUG. 29, 2019

**CAST-IN-PLACE CONCRETE
 CONSTANT SLOPE
 BARRIER - 54 INCH,
 32 INCH NEW JERSEY
 SHAPE BARRIER
 TRANSITION**

STANDARD DRAWING TITLE

STD. DWG. NO. **BA 3Q2**