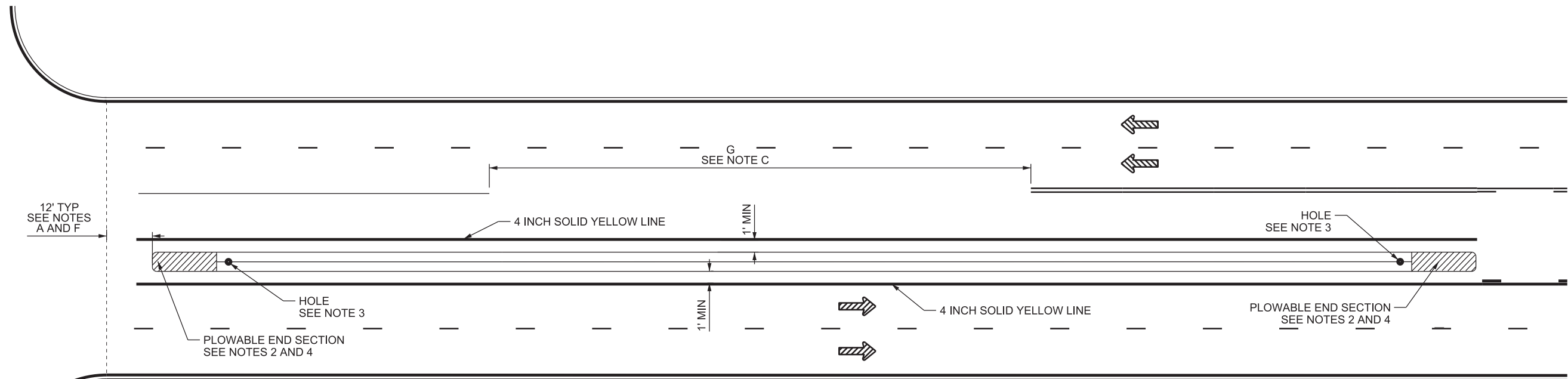
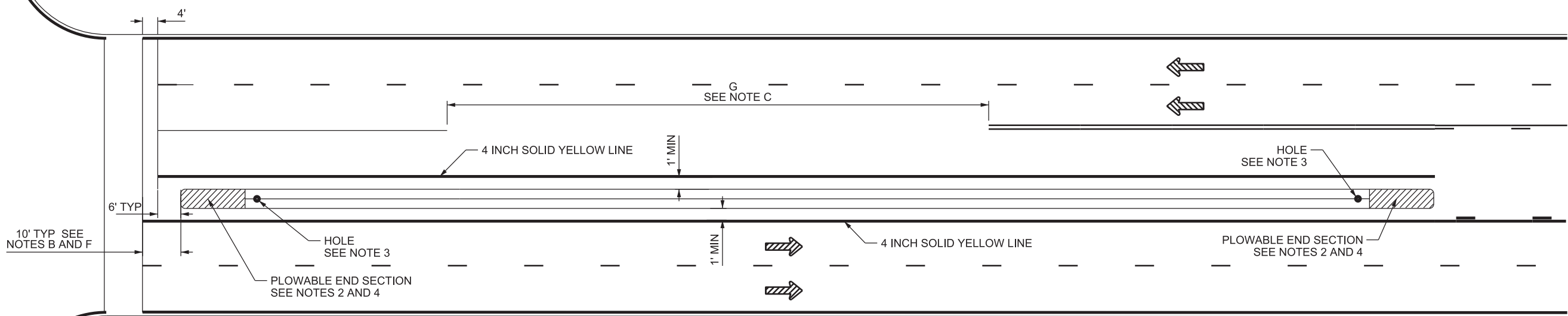


04-SEP-2019 D:\DOT\Standard Drawings\Imperial\2017 Approved\Supplemental\Issues\SupplB Approved August - 2019\Backup\GW01A.DGN



**ISLAND WITHOUT CROSSWALK, STOP OR YIELD LINE  
DETAIL GW 1A-1**



**ISLAND WITH CROSSWALK, STOP OR YIELD LINE  
DETAIL GW 1A-2**

**NOTES:**

1. SEE STD DWG GW 1B FOR RAISED ISLAND CURB DETAILS.
2. SEE STD DWG GW 1B FOR PLOWABLE END SECTION DETAILS.
3. SEE STD DWG GW 1C FOR HOLE DETAILS.
4. PAINT PLOWABLE END SECTION TO MATCH ADJACENT EDGE LINE.
5. SEE STD DWG ST 1 FOR STANDARD CROSSWALK, STOP AND YIELD LINE MARKINGS.
6. SEE STD DWG ST 1 FOR SCHOOL CROSSWALK, STOP AND YIELD LINE MARKINGS.

**DESIGN-ONLY NOTES:**

- A. PLACE ISLAND IN RELATION TO PC/PT OF CURB SHOULDER.
- B. PLACE ISLAND IN RELATION TO CROSSWALK, STOP OR YIELD LINE.
- C. SEE UDOT ROADWAY DESIGN MANUAL DM DRAWINGS FOR GAP LENGTH.
- D. LENGTH OF ISLAND DETERMINED BY REGION TRAFFIC ENGINEER.
- E. SEE UDOT ROADWAY DESIGN MANUAL DM DRAWINGS FOR PAVEMENT MARKING DETAILS.
- F. SETBACK FOR BEGINNING OF PLOWABLE END SECTION MAY INCREASE FOR SITE SPECIFIC APPLICATIONS.

SUPPLEMENTAL DRAWING

NO.	DATE	APPR.	REMARKS
1	8/29/19	MRB	REVISED REFERENCES FOR THE ST SERIES STANDARD DRAWINGS

**UTAH DEPARTMENT OF TRANSPORTATION**  
STANDARD DRAWINGS FOR ROAD AND BRIDGE CONSTRUCTION  
SALT LAKE CITY, UTAH

RECOMMENDED FOR APPROVAL \_\_\_\_\_ DATE AUG. 29, 2019

CHAIRMAN STANDARDS COMMITTEE APPROVED \_\_\_\_\_ DATE AUG. 29, 2019

DEPUTY DIRECTOR \_\_\_\_\_ DATE \_\_\_\_\_

**RAISED ISLAND**

STANDARD DRAWING TITLE

STD. DWG. NO.  
**GW 1A**