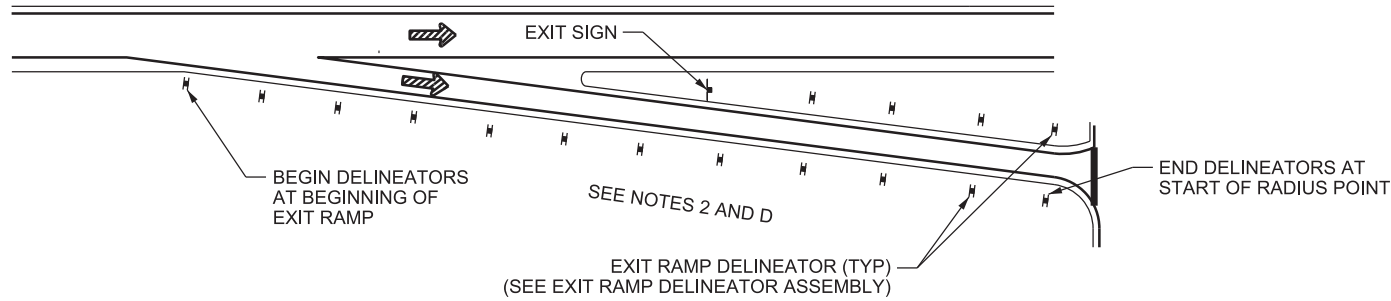
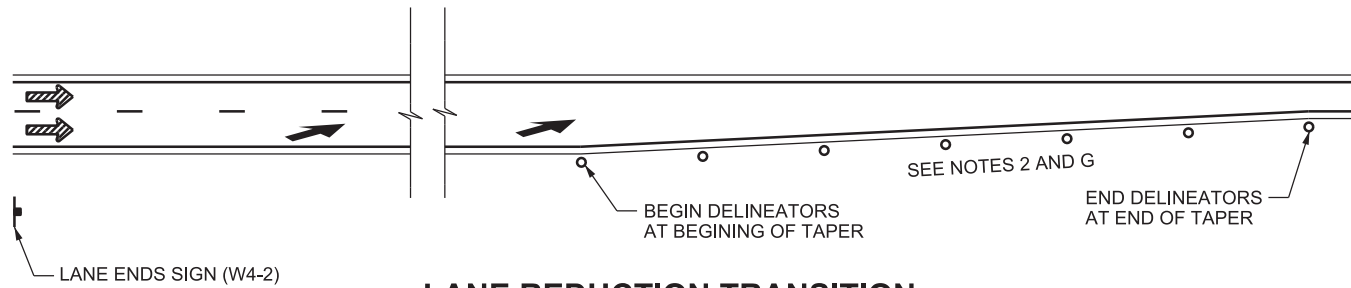


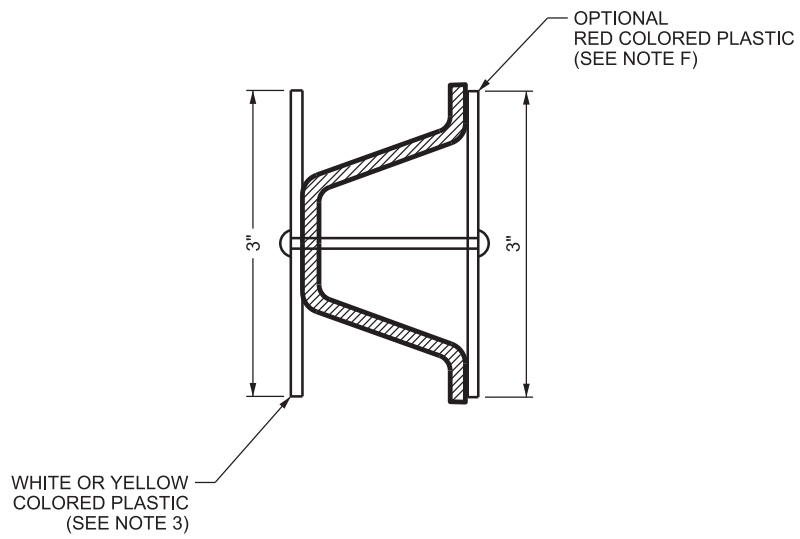
ENTRANCE RAMP



EXIT RAMP

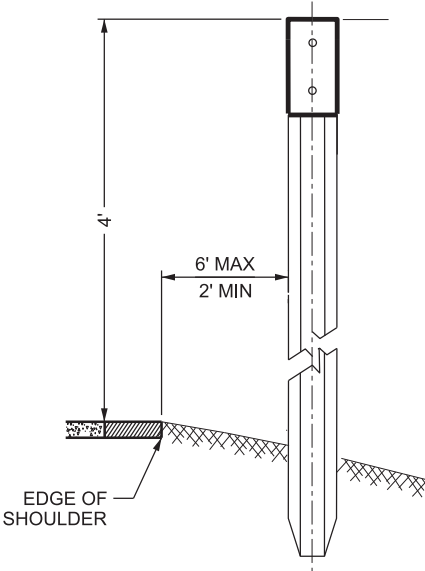


LANE REDUCTION TRANSITION

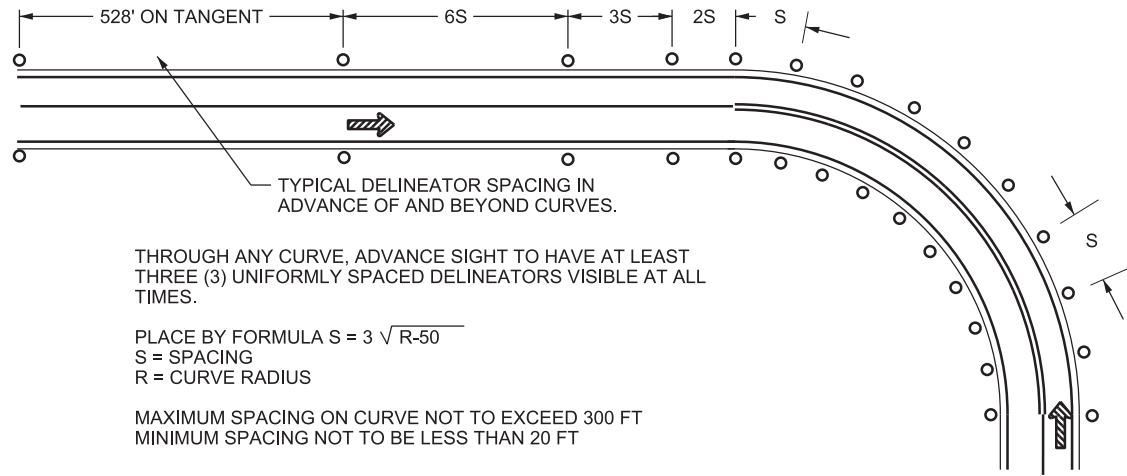


EXIT RAMP DELINEATOR ASSEMBLY

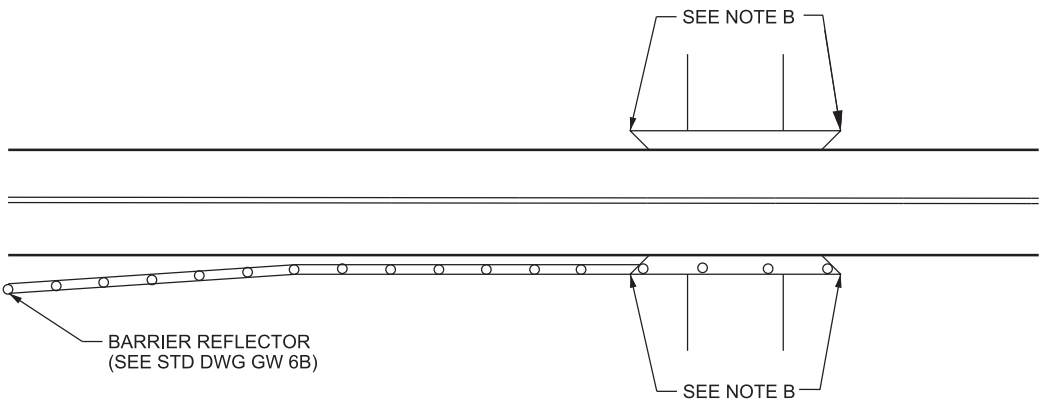
USE FOR 2 LB/FT POST WITH COLORED PLASTIC ATTACHED



DELINEATOR



DELINEATOR SPACING FORMULA



BARRIER REFLECTOR DETAIL

(SEE NOTE A)

NOTES:

1. BARRIERS ARE DEFINED AS BEING GUARDRAIL, CONCRETE BARRIER, AND BRIDGE PARAPET WALL.
2. USE CONSISTENT MOUNTING HEIGHT AT EACH LOCATION.
3. MATCH REFLECTOR COLOR TO THE ADJACENT PAVEMENT MARKING LINE COLOR. INSTALL THE YELLOW OR WHITE REFLECTORS ON POSTS TO FACE TRAFFIC.

DESIGN-ONLY NOTES:

- A. SPACE BARRIER REFLECTORS A MAXIMUM 100 FT IN PERMANENT APPLICATIONS AND 50 FT FOR TEMPORARY APPLICATIONS. REFLECTOR COLOR TO MATCH THE ADJACENT PAVEMENT MARKING LINE.
- B. INSTALL APPROPRIATE OBJECT MARKER OM3-R (OR L OR C) IN PLACE OF DELINEATOR AT LEADING EDGE OF BRIDGE PARAPET OR HEADWALL IF GUARDRAIL IS NOT PRESENT.
- C. CHEVRON ALIGNMENT (W1-8) SIGNS MAY BE USED WHEN ADDITIONAL EMPHASIS AND GUIDANCE FOR A CHANGE IN HORIZONTAL ALIGNMENT IS NEEDED. THE W1-8 SIGN MAY BE USED TO SUPPLEMENT STANDARD DELINEATORS ON CURVES. THE W1-8 SIGN MAY BE USED TO SUPPLEMENT OR AS AN ALTERNATE TO THE LARGE ARROW (W1-6) SIGN. SEE STD DWG SN 7 FOR CHEVRON ALIGNMENT SIGN DETAILS.
- D. SPACE TYPE II DELINEATORS AT 300 FT ON TANGENTS ALONG ALL ENTRANCE AND EXIT RAMP AS SHOWN. USE DELINEATOR SPACING FORMULA FOR ALL RAMP CURVES.
- E. USE DELINEATORS ON THE LEFT SIDE OF ENTRANCE AND EXIT RAMP FOR RIGHT HAND CURVES UPON APPROVAL OF THE REGION TRAFFIC ENGINEER.
- F. RED REFLECTORS MAY BE INSTALLED ON BACK SIDES OF DELINEATOR POSTS IN AREAS WHERE WRONG WAY DRIVERS ARE OF CONCERN.
- G. SPACE 7 TYPE I DELINEATORS EQUALLY SPACED THROUGH LENGTH OF LANE REDUCTION TAPER.

SUPPLEMENTAL DRAWING

| NO. | DATE | APPR. | REMARKS |
|-----|---------|-------|---|
| 1 | 8/29/19 | MRB | ADDED DELINEATOR PLACEMENT DETAIL FOR LANE REDUCTIONS |

| | | |
|--|--|-----------------------|
| UTAH DEPARTMENT OF TRANSPORTATION STANDARD DRAWINGS FOR ROAD AND BRIDGE CONSTRUCTION SALT LAKE CITY, UTAH | RECOMMENDED FOR APPROVAL | DATE AUG. 29, 2019 |
| | CHAIRMAN STANDARDS COMMITTEE APPROVED | DATE AUG. 29, 2019 |
| | DEPUTY DIRECTOR | DATE |

DELINEATION APPLICATION

STANDARD DRAWING TITLE

STD. DWG. NO.
GW 7A

DGN File: L:\Standard Drawings\Imperial\2817 Approved\Suppl\Issues\SupplB Approved August - 2019\Backup\DW7A.DGN
 04-SEP-2019