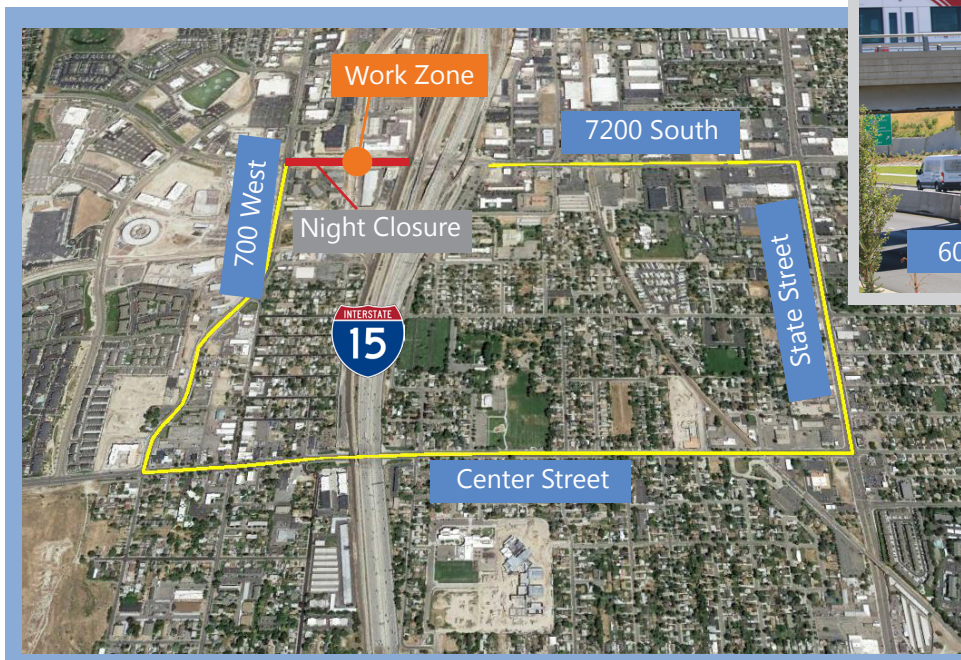


## SR-48 (7200 South) at 600 West Bridge Repair

The Utah Department of Transportation (UDOT) is scheduled to repair a damaged bridge on SR-48 (7200 South) in Midvale. This project will repair a damaged girder on the west side of the UTA Trax bridge located at 600 West.

Repair work is scheduled to begin on October 30 and last approximately four weeks, weather permitting. Crews will remove paint, repair a damaged girder on the bridge above the eastbound lanes, and then repaint the bridge.

Work will occur primarily during night time hours, with possible daytime work. Because the work will be performed directly above the roadway, there will be nightly closures between I-15 and 700 West. Motorists are advised to use an alternate route during work, such as Center Street for east-west mobility (as shown on detour map). Please note that UTA Trax service is not expected to be impacted during repair work.



### Tentative Night Closures

Beginning 10/30 for approx. 4 weeks

Monday - Thursday:

10:00 p.m. to 6:00 a.m.

Friday: 11:00 p.m. to 8:00 a.m.

Saturday: 9:00 p.m. to 9:00 a.m.

Sunday: 8:00 p.m. to 6:00 a.m.

-  Night closure
-  Work zone
-  Detour

Website: [udot.utah.gov/go/600wbridge](http://udot.utah.gov/go/600wbridge)

Email: [aavalos@utah.gov](mailto:aavalos@utah.gov)

Hotline: (801) 975-4958 (M-F, 8-5)