

SR-36
RENEWED
3 O'Clock Drive to Stansbury

Project Overview

Tooele City Council
March 4, 2015

A UDOT PROJECT

Project Objectives

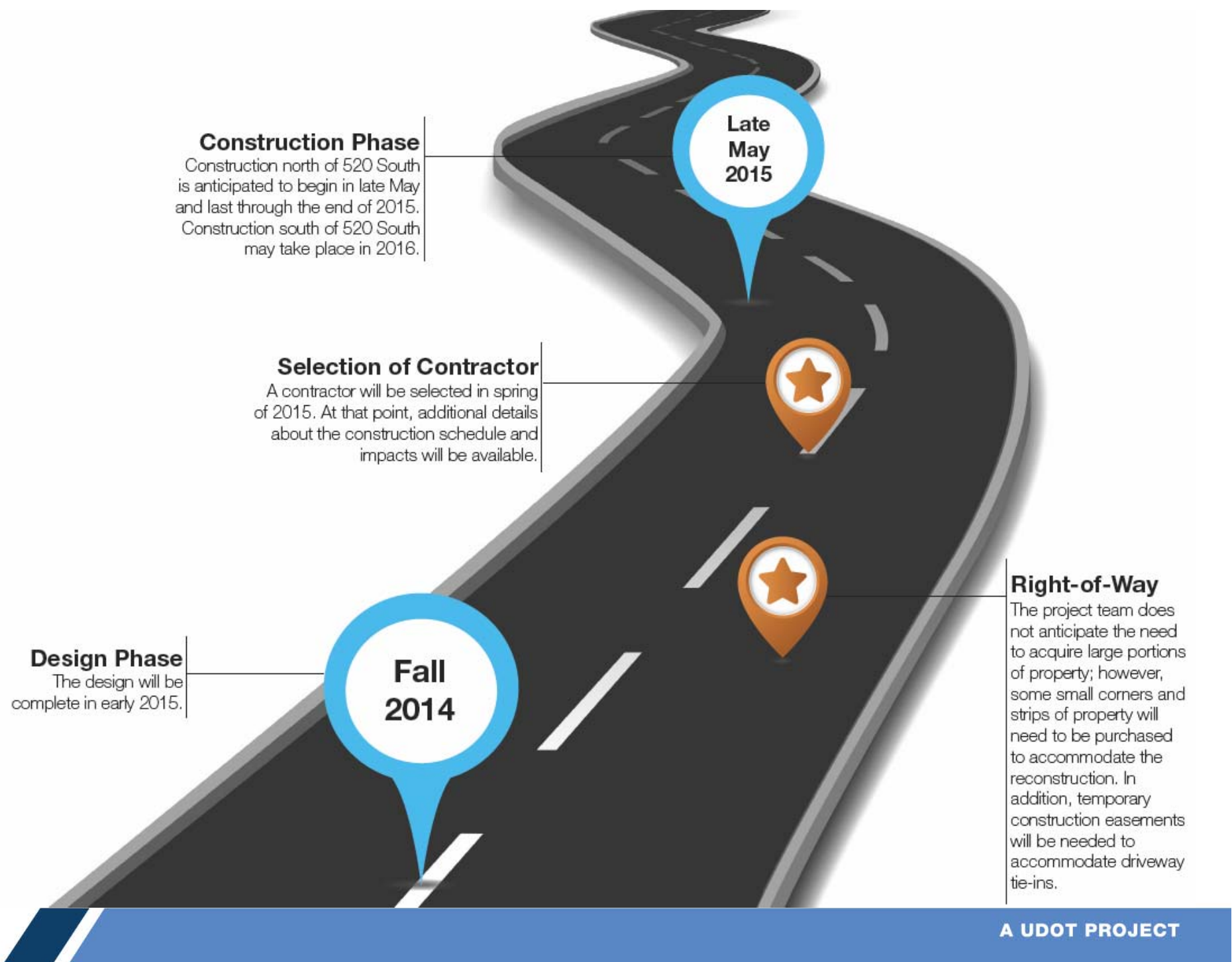
- Reconstruct pavement from 3 O’Clock Drive to 1280 North
- Rehabilitating pavement from 1280 North to Stansbury
- Address drainage concerns
- Provide a consistent corridor with curb, gutter, shoulder and sidewalk
- Maintain traffic flow and business access during construction



Outreach During Construction

- Weekly construction email updates
 - sr36@utah.gov
- Real-time updates
 - www.commuterlink.utah.gov
 - UDOT Traffic app
- Twitter
 - @UDOTRegionTwo
- 24 Hour Hotline
 - 801-859-3770





Construction Phase

Construction north of 520 South is anticipated to begin in late May and last through the end of 2015. Construction south of 520 South may take place in 2016.

Late May 2015

Selection of Contractor

A contractor will be selected in spring of 2015. At that point, additional details about the construction schedule and impacts will be available.



Design Phase

The design will be complete in early 2015.

Fall 2014

Right-of-Way

The project team does not anticipate the need to acquire large portions of property; however, some small corners and strips of property will need to be purchased to accommodate the reconstruction. In addition, temporary construction easements will be needed to accommodate driveway tie-ins.

Construction Details

- Construction begins late May
- Some third party utilities will be relocated before May
- Crews will also be working nights and weekends



Construction Details

- Main Street paving north of 520 South complete by 12/31/15
- Main Street paving south of 520 South may take place in 2016
- Two travel lanes in each direction between 700 North and 1000 North will be open before Scholar Academy Charter School is in session



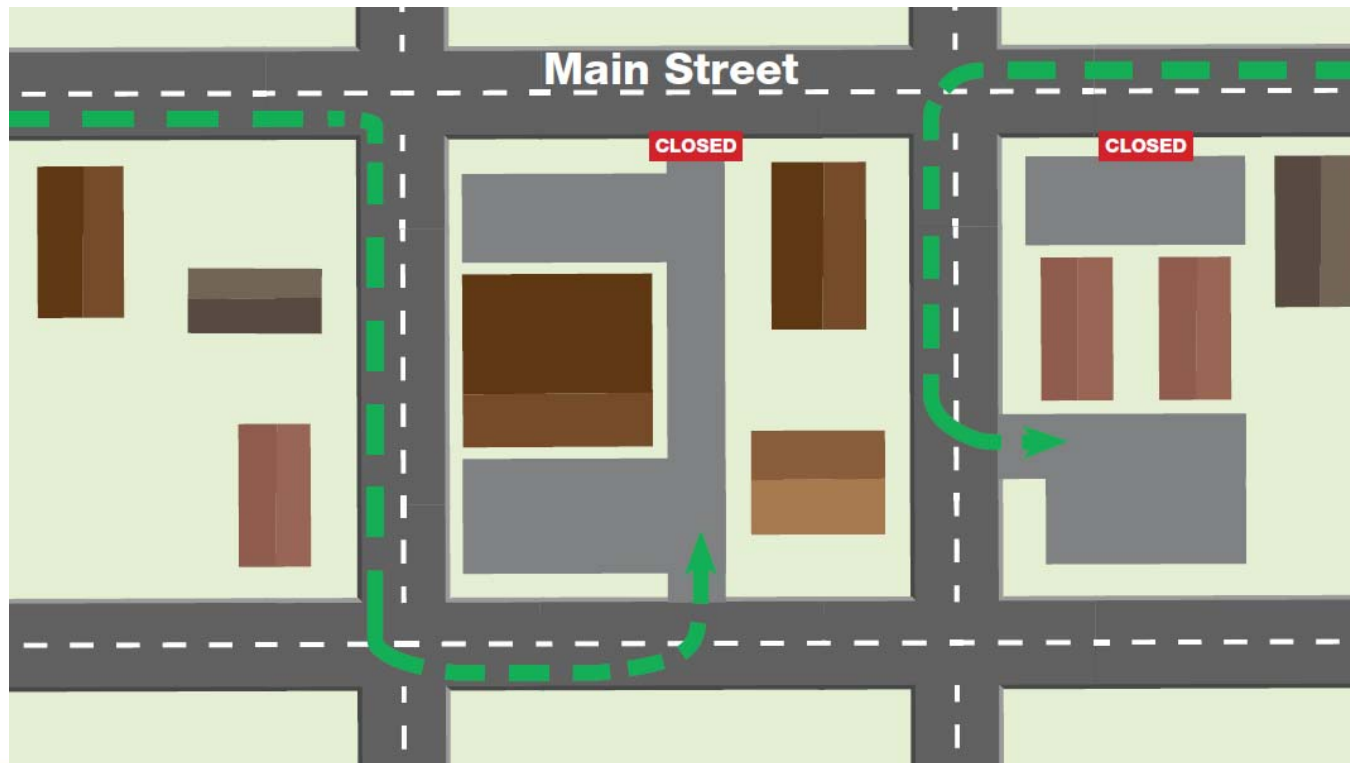
Traffic Control

- One travel lane in each direction will be maintained at all times
- Project team will coordinate with local trucking organizations
- To accommodate the 4th of July parade, no road demolition will take place from 200 South to Utah Avenue before 7/5/15



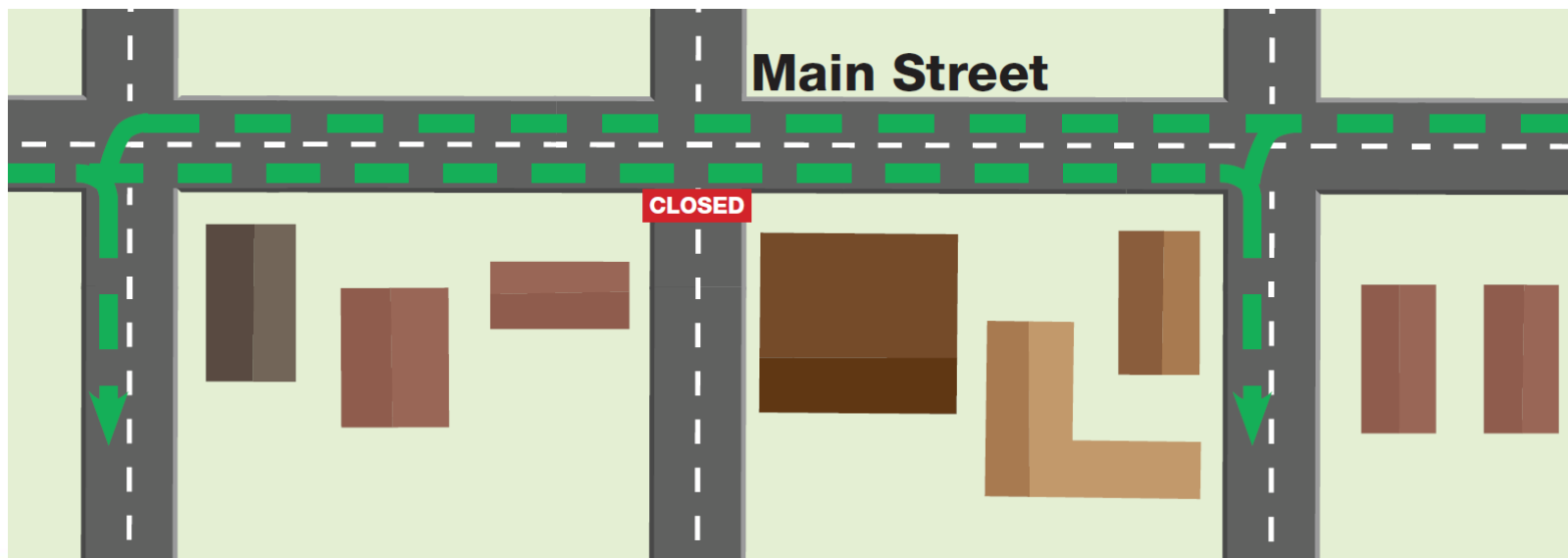
Access

- One access will be maintained at each property
 - The maintained access may not be the access from Main Street



Access

- Contractor will be allowed to close cross street access from Main Street with advance notice to the community
- Closure of two adjacent cross streets will not be allowed



Project Visualization

- Video from Avenue

For More Information

- Contact our Public Involvement Manager
 - Carlye Sommers
801-859-3770
sr36@utah.gov
- Visit our website
 - www.udot.utah.gov/go/sr36

The screenshot shows the UDOT website homepage. At the top, there is a navigation bar with links for PUBLIC, DOING BUSINESS, INSIDE UDOT, MEDIA, PROJECTS AND STUDIES, and TRAFFIC. Below this is a 'CONSTRUCTION' section with a 'Home' link. The main content area features a large banner for the 'UDOT TRAFFIC APP' with the text 'GET THE UDOT TRAFFIC APP now available on the iPhone and Android smartphones'. To the left of the banner is a 'My Quick Links' section with various links like Road Conditions, Motor Carrier Division, and Bid Letting. Below that is an 'Other Helpful Sites' section. To the right of the banner is a 'UDOT Traffic Cameras' section with several camera feeds. At the bottom, there is a 'Current UDOT Projects' section with a list of projects and a 'UDOT Programs' section with logos for SNAP, TRAVELMETER, and SYNCHRO. A weather widget for Salt Lake City is also visible, showing a temperature of 61 degrees and 'Partly Cloudy' conditions.